

DOMUS NOVA

St Lukes Road

Notting Hill W11

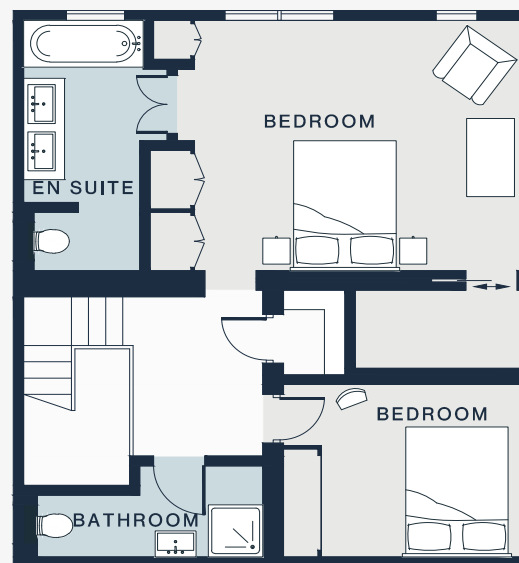
APPROXIMATE GROSS INTERNAL AREA

1,418 sq ft / 131.7 sq m

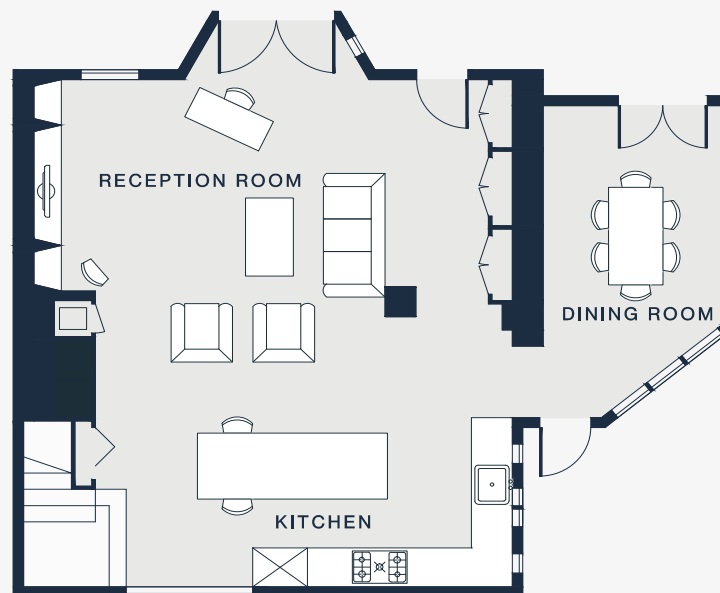
020 7727 1717

domusnova.com

LONDON | IBIZA



FIRST FLOOR



GROUND FLOOR

Approx. Gross Internal Area = 1418 sq ft / 131.7 sq m

Floor plans are for illustrative purposes only and not to scale. Compliant with RICS code of measuring practice. Furniture layouts are indicative only. This property may be furnished, part-furnished or unfurnished. Please refer to your agent for details.

