

DOMUS NOVA

Sheffield Terrace

Kensington W8

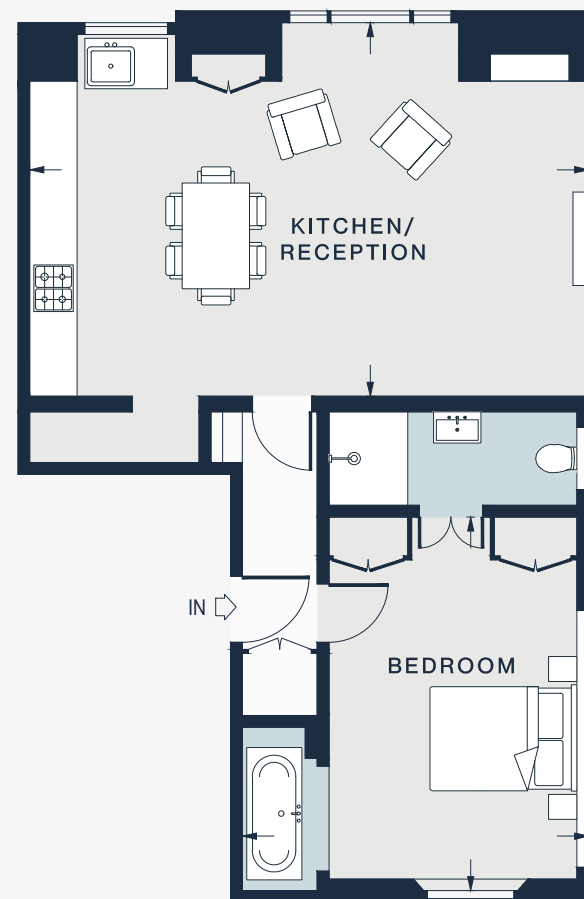
APPROXIMATE GROSS INTERNAL AREA

687 sq ft / 63.8 sq m

020 7727 1717

domusnova.com

LONDON | IBIZA



FOURTH FLOOR

KITCHEN / RECEPTION

23'3 x 16'9 (7.1m x 4.8m)

BEDROOM

15'11 x 14'6 (4.8m x 4.4m)

Approx. Gross Internal Area = 687 sq ft / 63.8 sq m

Floor plans are for illustrative purposes only and not to scale. Compliant with RICS code of measuring practice. Furniture layouts are indicative only. This property may be furnished, part-furnished or unfurnished. Please refer to your agent for details.