

DOMUS NOVA



Rutland Gardens Mews, SW7 – £3,500 p/w (LL) / £6,500 p/w (SL)

In partnership with **BARNES**
INTERNATIONAL REALTY



Caught between Hyde Park and Knightsbridge, this Grade II listed mews block has a secluded feel – accessed through a tall brick archway. Beyond, the small cluster of homes sit on paving stones, showcasing historic esteem with their blue plaques and picturesque façades. Inside one of these mews homes, luminous contemporary design comes to the fore across its spacious footprint.

Past the ornate front door, head right into the open-plan kitchen and dining room. Natural light abounds through large picture windows, accentuating the whitewashed tones and pale wood floors. A striking waterfall marble island centres the kitchen, which has been crafted with handleless cabinetry and seamlessly integrated Miele appliances. Banquette seating makes for a relaxed eating area – illuminated by a series of pendant lights that hang above the table.

Across the large entrance hallway, tranquility ensues in the living room. Neutral floor-to-ceiling curtains frame sash windows, which diffuse sunlight across the space. There's a desk suited for home working, plus an inviting sofa and boucle armchair positioned beneath the midcentury modern pendant light. A full-height black bookshelf is a bold contrast against the paler scheme, offering display and storage space in abundance.





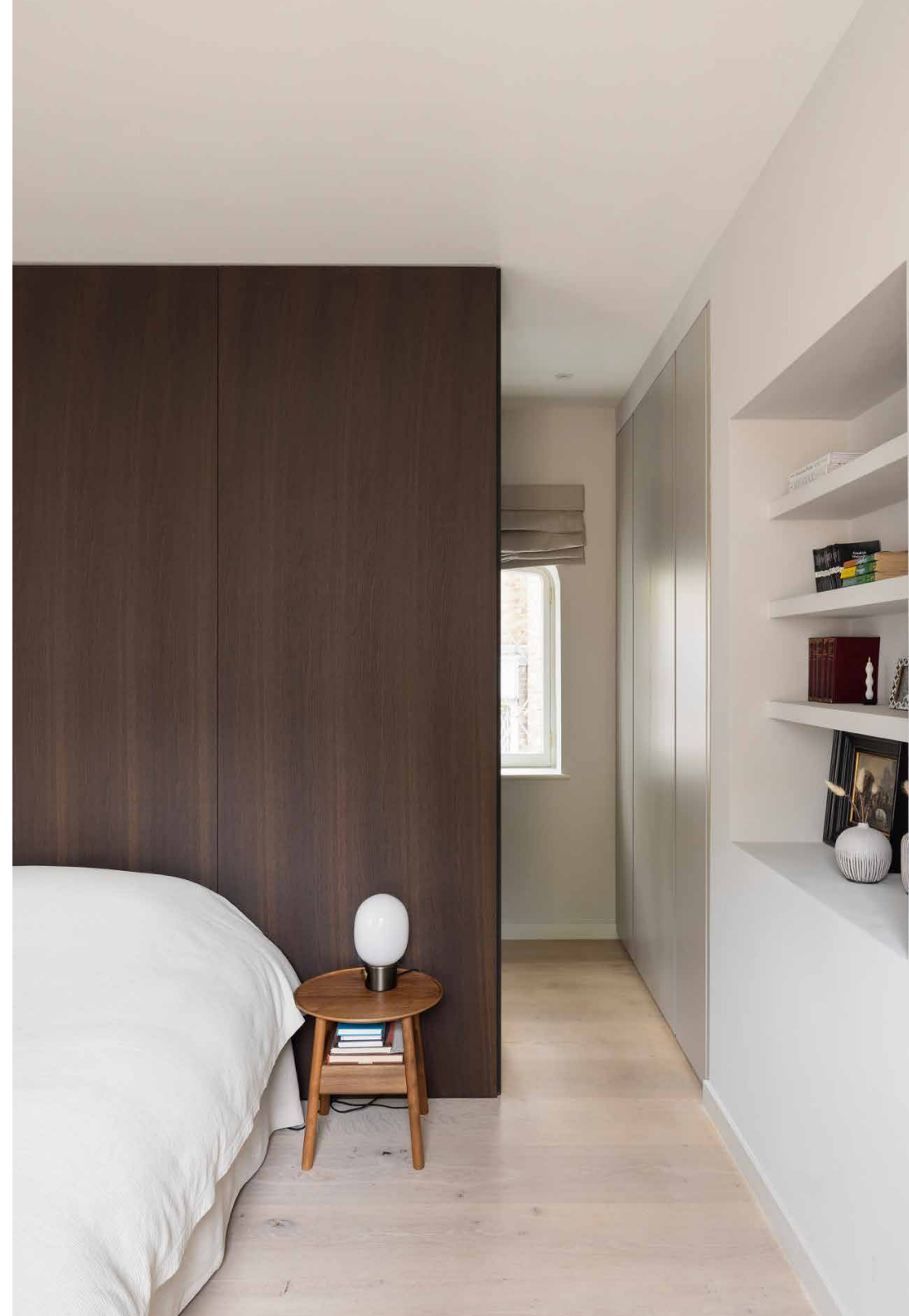




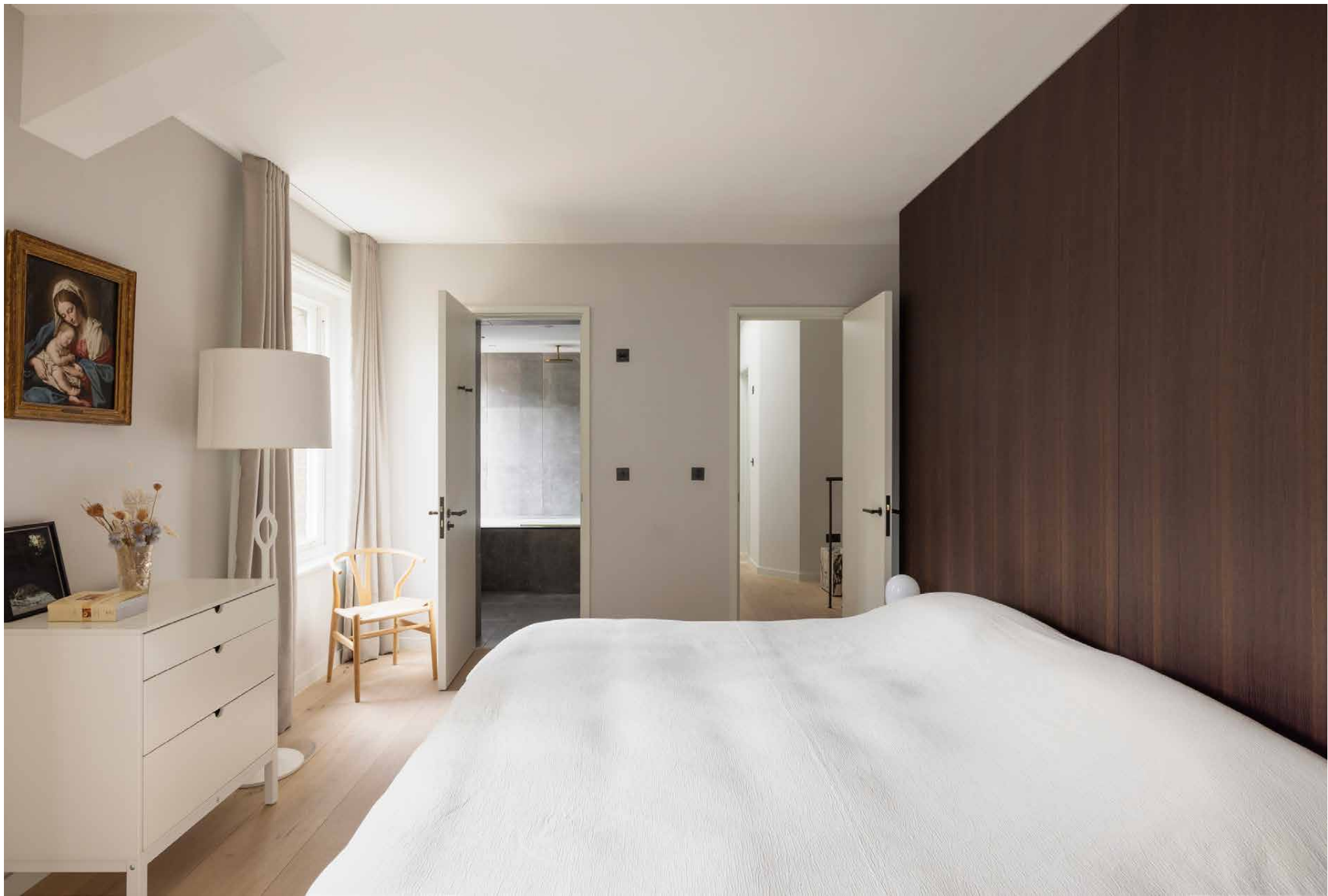


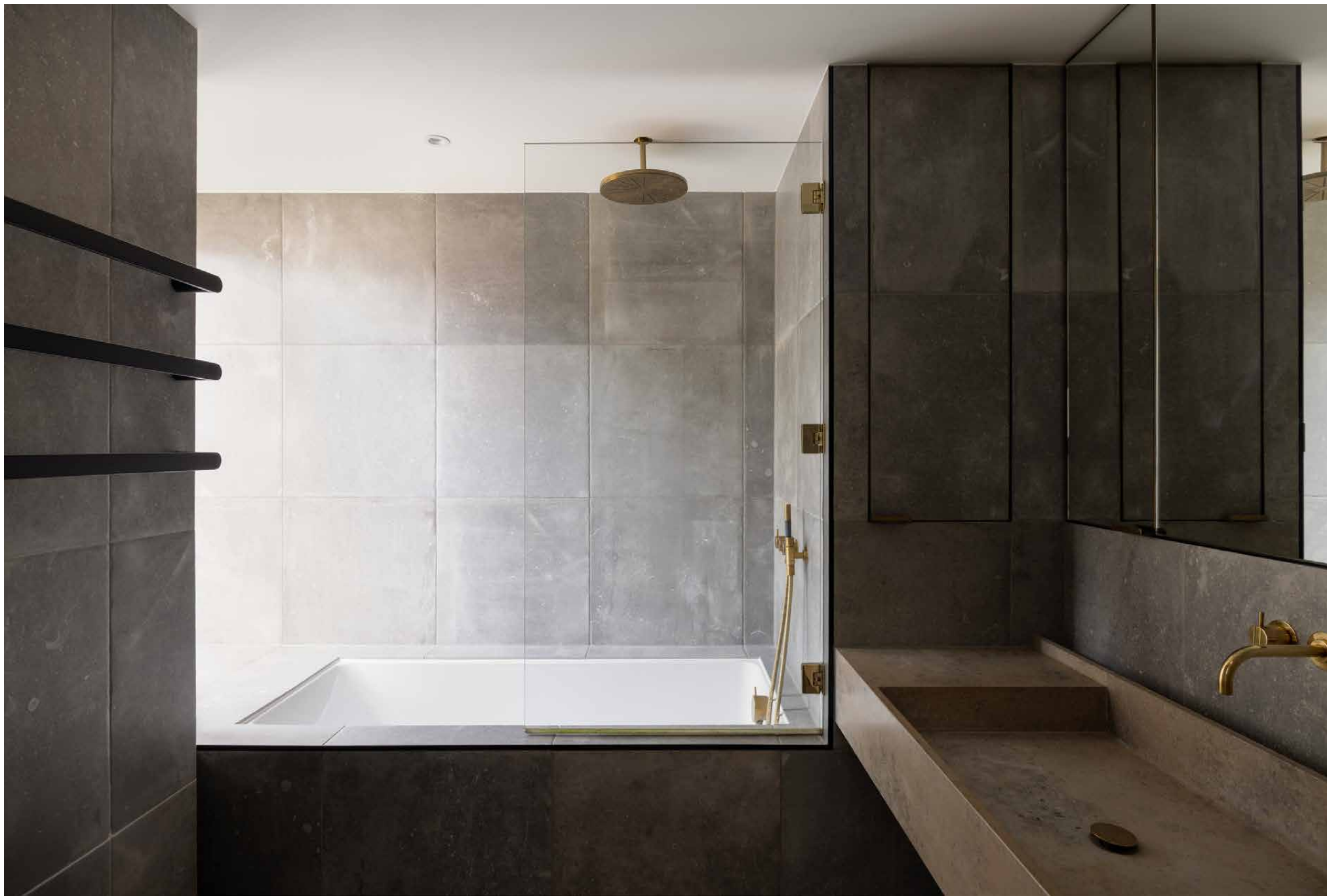
Upstairs, the principal bedroom suite is a picture of minimalism. The eye is drawn to the dark wood panelling that stretches up to the ceiling behind the bed, bringing a natural materiality to the serene setting. Things are kept tidy with a series of slim, integrated wardrobes, while additional display shelving is neatly carved into one of the walls. The en suite bathroom takes a moodier turn, wrapped in oversized granite-toned tiling. A deep bathtub, rainfall shower and modern sink are accentuated with bright gold hardware.

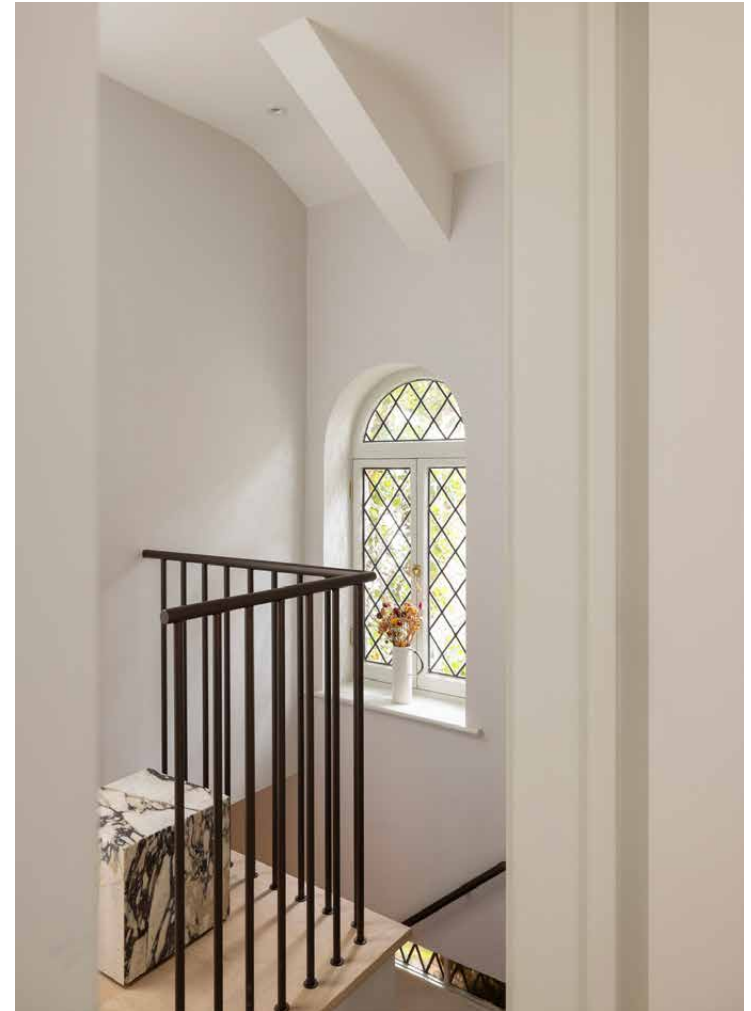
Past the landing, which is bright and voluminous courtesy of a skylight, enter the guest bedroom. Matching the home's overall interior scheme, the palette is restrained and soothing. A row of full-height wardrobes provides ample storage for the space – which has versatility to be used for work or dressing. It's served by a guest bathroom, featuring a walk-in shower.





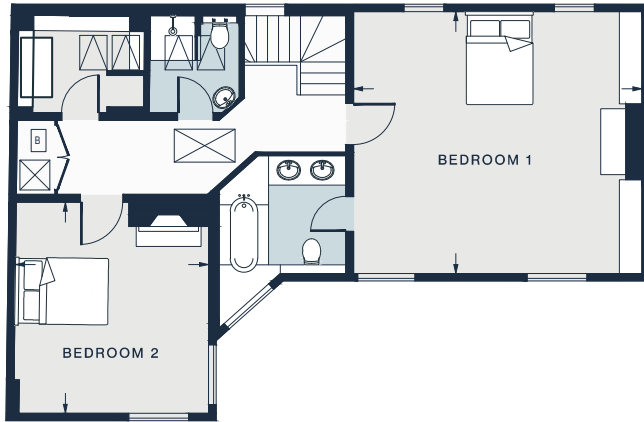




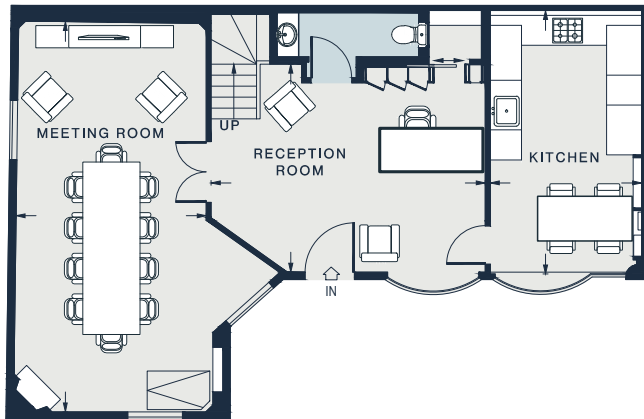








FIRST FLOOR



GROUND FLOOR

MEETING ROOM
25'9 x 12'6 (7.8m x 3.8m)

RECEPTION ROOM
18'1 x 13'8 (5.5m x 4.17m)

KITCHEN
17'4 x 9'11 (5.2m x 3.0m)

OFFICE 1
19'0 x 17'3 (5.7m x 5.2m)

OFFICE 2
13'11 x 12'8 (4.2m x 3.8m)

Ground Floor = 842 sq ft / 78.2 sq m
First Floor = 832 sq ft / 77.3 sq m
Approx. Gross Internal Area = 1,674 sq ft / 155.5 sq m

Floor plans are for illustrative purposes only and not to scale. Compliant with RICS code of measuring practice.
Prepared for Domus Nova. Copyright © All Rights Reserved.

Property Details

2 Bedrooms, 2 Bathrooms
Open-plan kitchen and dining room
Living room
Principal bedroom suite
Guest bedroom
Guest bathroom
Storage
City of Westminster

Approx. 1,674 sq ft / 155.5 sq m
EPC=D
Deposit: £21,000 (LL) / £26,000 (SL)
Council Tax Band: H



Location

Rutland Garden Mews combines tranquil mews living with effortless access to one of the city's most sophisticated postcodes. The green expanse of Hyde Park is on your doorstep for a breath of fresh air amongst the rose garden, or swims in the Serpentine Lido. Knightsbridge's iconic shopping scene is also close by, including London's foremost department stores, Harrods; start your day with coffee at the artisanal Roast & Bake cafe, found in the food hall. Head to South Kensington for exhibitions at the V&A and Natural History Museum, or catch world-class performances at the Royal Albert Hall. Fine dining abounds in this neighbourhood, from Zuma to Dinner by Heston Blumenthal and Gordon Ramsay's Petrus. Come evening, inventive cocktails and smart nightcaps at The Library Bar.

Knightsbridge – 8 minutes (Piccadilly)

Who — we are



Forward-thinkers in property, design and culture, we're an estate agency that hits refresh.

Domus Nova was born out of a desire to do things differently; to break the traditional agency model and focus on design-led homes in London and Ibiza, all while delivering the highest levels of personal service.

Our story starts in the nineties when we founded Notting Hill's first boutique agency – and we continue to open the doors to the most remarkable spaces, revealing them to our like-minded community.

We want to help you live better – and believe considered design can do that. That's why we remain committed to building on our legacy, in collaboration with BARNES International, an established agency with a market-leading presence in 22 countries.

Uniting our local insight and curated portfolio with BARNES International's expansive reach, we can facilitate the best opportunities in not only London and Ibiza, but also across Europe, the US and further afield – whether that's a château in the South of France, a penthouse in New York, or a chalet in the Swiss Alps.



DOMUS NOVA

Specialising in London
and Ibiza's design-led homes

Let's talk
020 7727 1717
lettings@domusnova.com

The property particulars are a guide not statements. Descriptions, photographs, and plans are for guidance and should be checked by the prospective tenant. The Property is offered "subject to contract and references". No warranties, representations, or Tenancy is given by Domus Nova. Expenses incurred by a prospective tenant will not be reimbursed if the Landlord withdraws prior to the Tenancy Agreement being signed, dated and exchanged and cleared funds received. Furniture and other items shown in a property at viewing may belong to a current tenant. The prospective tenant should verify in writing which fixtures and fittings forms part of the Tenancy. Our full lettings disclaimer together with trading names and our [Privacy Policy](#) is shown on our website

© 2025 Domus Nova in partnership with BARNES International. All rights reserved.

In partnership with
BARNES
INTERNATIONAL REALTY