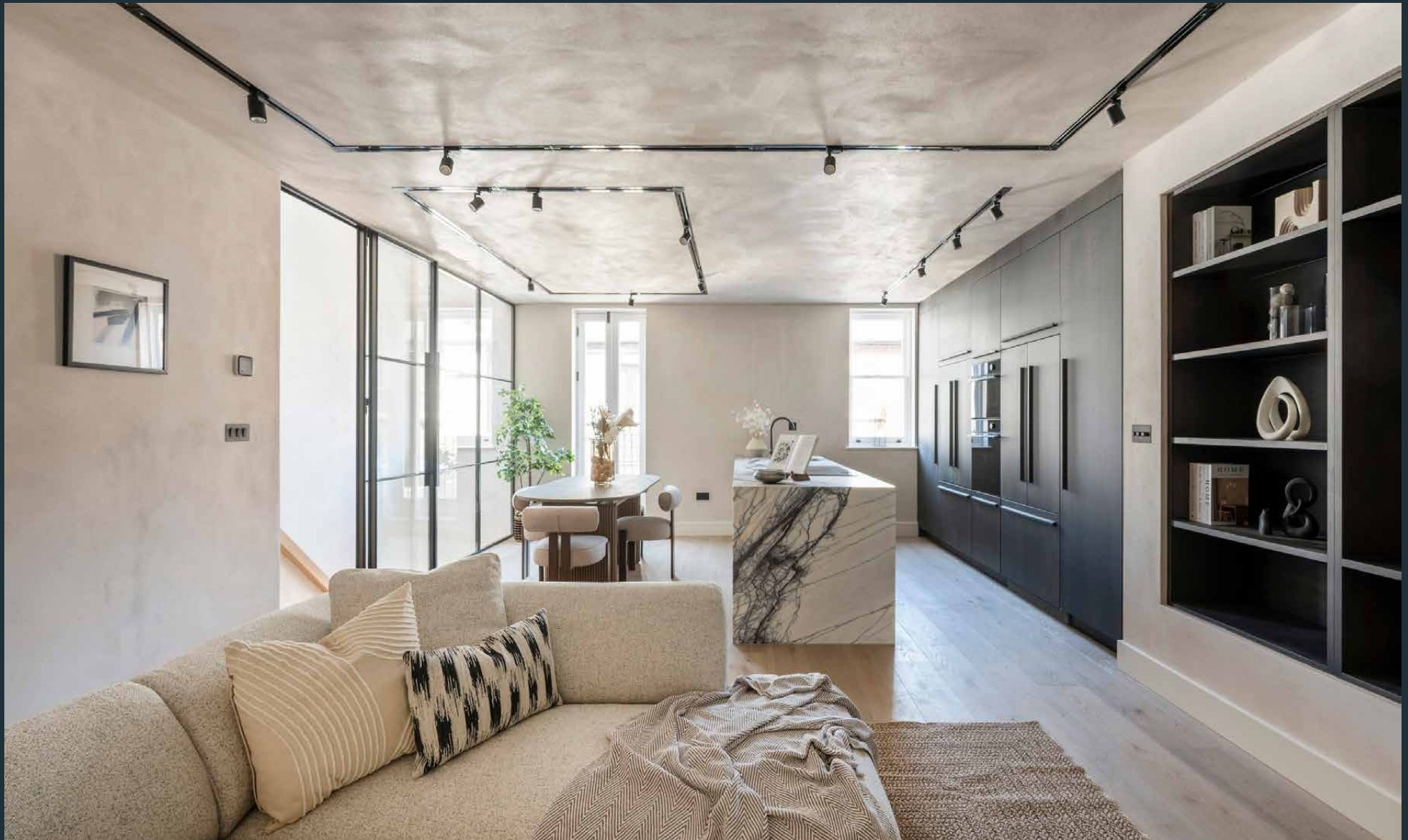


DOMUS NOVA



Russell Gardens Mews W14 – £2,000,000

In partnership with **BARNES**
INTERNATIONAL REALTY



Tucked off the vibrant thoroughfare of Kensington High Street, Russell Gardens Mews has a notably tranquil feel – an atmosphere that’s effortlessly carried inside this three-bedroom home, thanks to the creative renovation of Hampstead Architects and Studio Aros. Across its three storeys, serenity is drawn with tactile materials, clean lines and a prioritisation of natural light across every space.





An architectural staircase has a rhythmic feel as you enter, engineered with vertical timber balusters and double-glazed sash windows neatly carved into the triple-height aspect. It leads up to the first-floor social heart: an open-plan kitchen, dining and reception room. Crittall glazing introduces the space with a sleek, industrial edge and draws in reams of sunlight. Handfinished European oak floors and whitewashed microcement walls bring textural warmth to the setting, while the ceiling is punctuated with modern jet-black lighting tracks.

To one side of the room, the living area features a bespoke NOVO Joinery television and shelving unit; to the other side, the kitchen is centred by a Calacatta marble waterfall island, backdropped by walnut veneer cabinetry and streamlined integrated appliances. From the dining space, a pair of French windows open onto a Juliet balcony overlooking the cobbled cul-de-sac below.

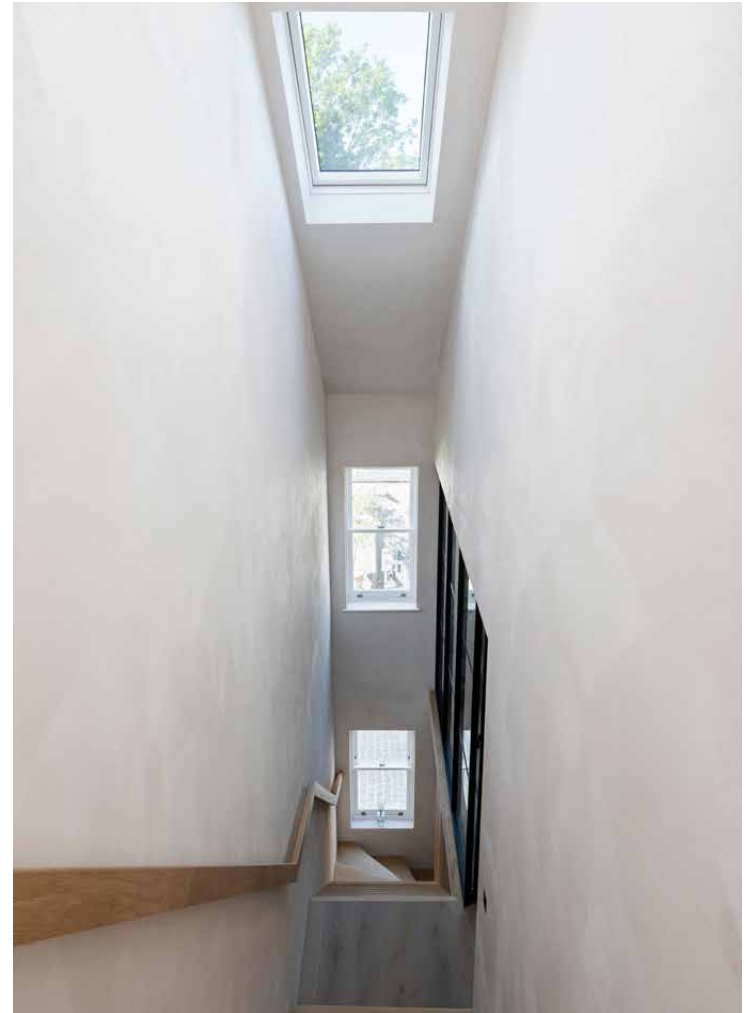














Minimalism ensues in the principal bedroom suite, located at the top of the home. The space is filled with soft light through sash and Velux windows, illuminating the vaulted proportions and pale tonal scheme. An en suite bathroom is laid with Mandarin Stone porcelain floors, a dual vanity and sculptural freestanding bathtub. Functionality is seamlessly woven in, from the eaves storage to the bespoke NOVO wardrobes Daikin air conditioning.

On the ground floor, two guest bedrooms maintain the home's calming aesthetic and offer versatility to be used as offices, studios or additional storage spaces. Completing the home is an inviting guest bathroom with a contemporary walk-in shower.

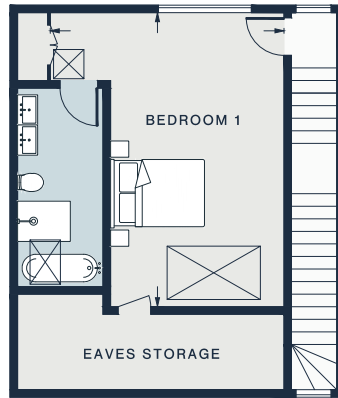




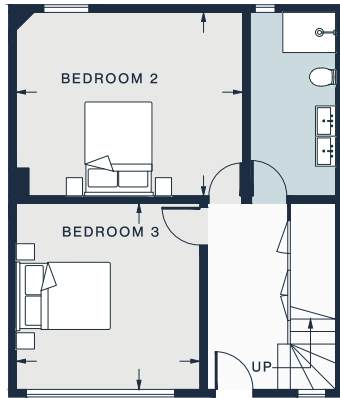




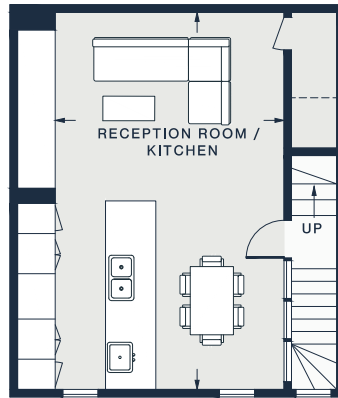




SECOND FLOOR



GROUND FLOOR



FIRST FLOOR

RECEPTION ROOM/ KITCHEN

24'9 x 14'8 (7.5m x 4.5m)



BEDROOM 1

19'2 x 15'1 (5.8m x 4.5m)



BEDROOM 2

14'1 x 11'9 (4.6m x 3.6m)



BEDROOM 3

12'1 x 12'1 (3.6m x 3.6m)



Approx. Gross Internal Area = 1,439 sq ft / 133 sq m (Excluding Eaves)



Floor plans are for illustrative purposes only and not to scale. Compliant with RICS code of measuring practice. Prepared for Domus Nova. Copyright © All Rights Reserved.

Property Details

Architecture by Hampstead Architects

Interior design by Studio Aros

Newly refurbished

Open-plan kitchen, dining and reception room

Principal bedroom suite

Two guest bedrooms

One guest bathroom

Royal Borough of Kensington & Chelsea

Approx. 1,439 sq ft / 133 sq m

EPC=TBC

Tenure: Freehold

Council Tax Band: TBC



Location

Russell Gardens Mews has a quietude that belies its enviable proximity to some of West London's best hotspots. It's a short walk to the manicured lawns of Holland Park, as well as the Royal Albert Hall and the Design Museum for its world-class exhibitions. Retail therapy is in abundance, from The Village at Westfield to Notting Hill's vintage boutiques and the everyday essentials along Kensington High Street – plus a weekly farmer's market to source organic, local produce. For nights of fine dining, beloved institutions include Belvedere, Kitchen W8 and Maggie Jones's.

Kensington Olympia - 5 mins

Shepherd's Bush - 12 mins



Who ——— we are

Forward-thinkers in property, design and culture, we're an estate agency that hits refresh.

Domus Nova was born out of a desire to do things differently; to break the traditional agency model and focus on design-led homes in London and Ibiza, all while delivering the highest levels of personal service.

Our story starts in the nineties when we founded Notting Hill's first boutique agency – and we continue to open the doors to the most remarkable spaces, revealing them to our like-minded community.

We want to help you live better – and believe considered design can do that. That's why we remain committed to building on our legacy, in collaboration with BARNES International, an established agency with a market-leading presence in 22 countries.

Uniting our local insight and curated portfolio with BARNES International's expansive reach, we can facilitate the best opportunities in not only London and Ibiza, but also across Europe, the US and further afield – whether that's a château in the South of France, a penthouse in New York, or a chalet in the Swiss Alps.



DOMUS NOVA

Specialising in London
and Ibiza's design-led homes

Let's talk

020 7221 7817

sales@domusnova.com

The particulars above are a guide, not an offer or contract. Descriptions, photographs and plans are not statements or representations of fact. Measurements are approximate and not to scale. Prospective purchasers must verify the accuracy of the information within the particulars. Domus Nova does not give any representations or warranties; nor represent the Seller legally. Domus Nova has no liability, for any costs, losses or expenses incurred by the Seller or a prospective buyer relating to the sales and buying transaction.

Our Sales Disclaimer, trading names and privacy policy on how your data is processed and used is found in full on our website in our [Privacy Statement](#).

© 2026 Domus Nova in partnership with BARNES International. All rights reserved.

In partnership with
BARNES
INTERNATIONAL REALTY