

DOMUS NOVA



Richford Street, W6
£1,595,000



Tucked between the leafy paths along the Thames and the cultural buzz of Shepherd's Bush, this family home finds harmony in contrasts. Set across four carefully composed floors, thoughtful design hints at mid-century modernism, while spatial generosity comes with ease.

From its elevated entrance on the raised ground floor, herringbone floors lead the way through a double reception room. It's a masterclass in light and proportion: soaring ceilings, crisp white walls, and twin original fireplaces anchor the space, a quiet nod to the home's Victorian bones. On one side, a reading room or home office; on the other, a setting made for social occasions that stretch into the evening. Floor-to-ceiling glazed doors pull in the light and lead to a balcony that floats above the garden below – an ideal perch for a breath of fresh air or aperitif.

The heart of the home lies below, where the lower ground floor opens up into a voluminous, open-plan expanse. Warm wooden floors and soft-toned walls create a grounding backdrop for a bespoke Craigie Woodworks kitchen, complete with teak-veneered cabinetry, recessed handles, and sleek stainless steel countertops. A Smeg oven and Miele appliances bring culinary precision, while a sculptural island and integrated wooden banquette elevate dining. A wall of glazing opens to reveal a peaceful patio and lawn wrapped in greenery.

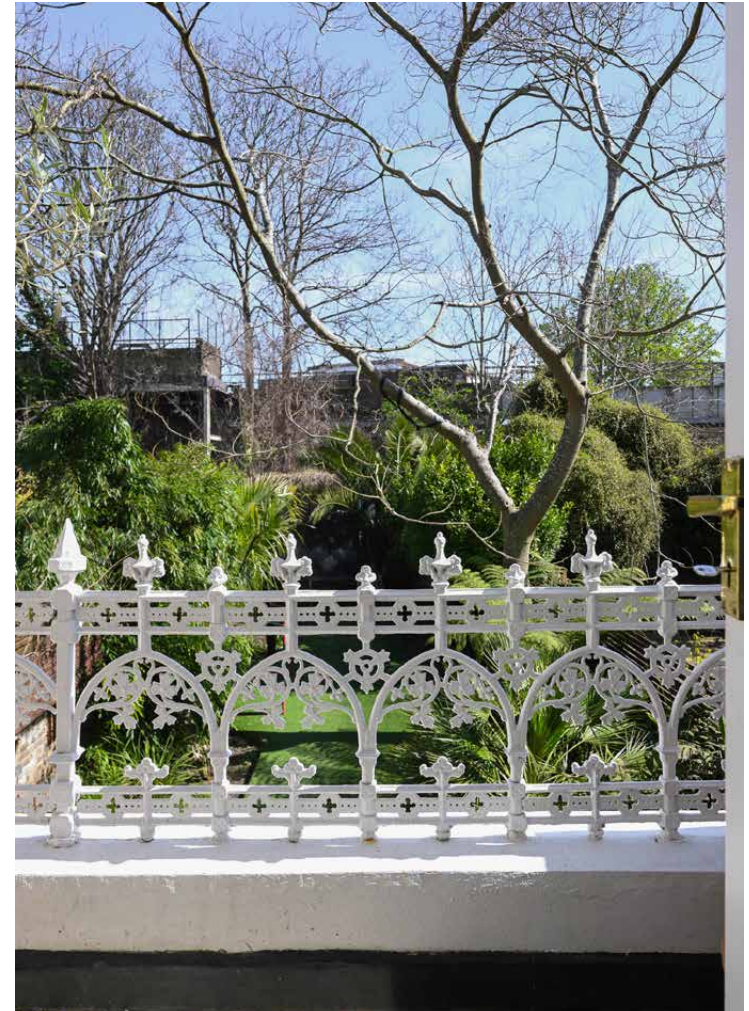




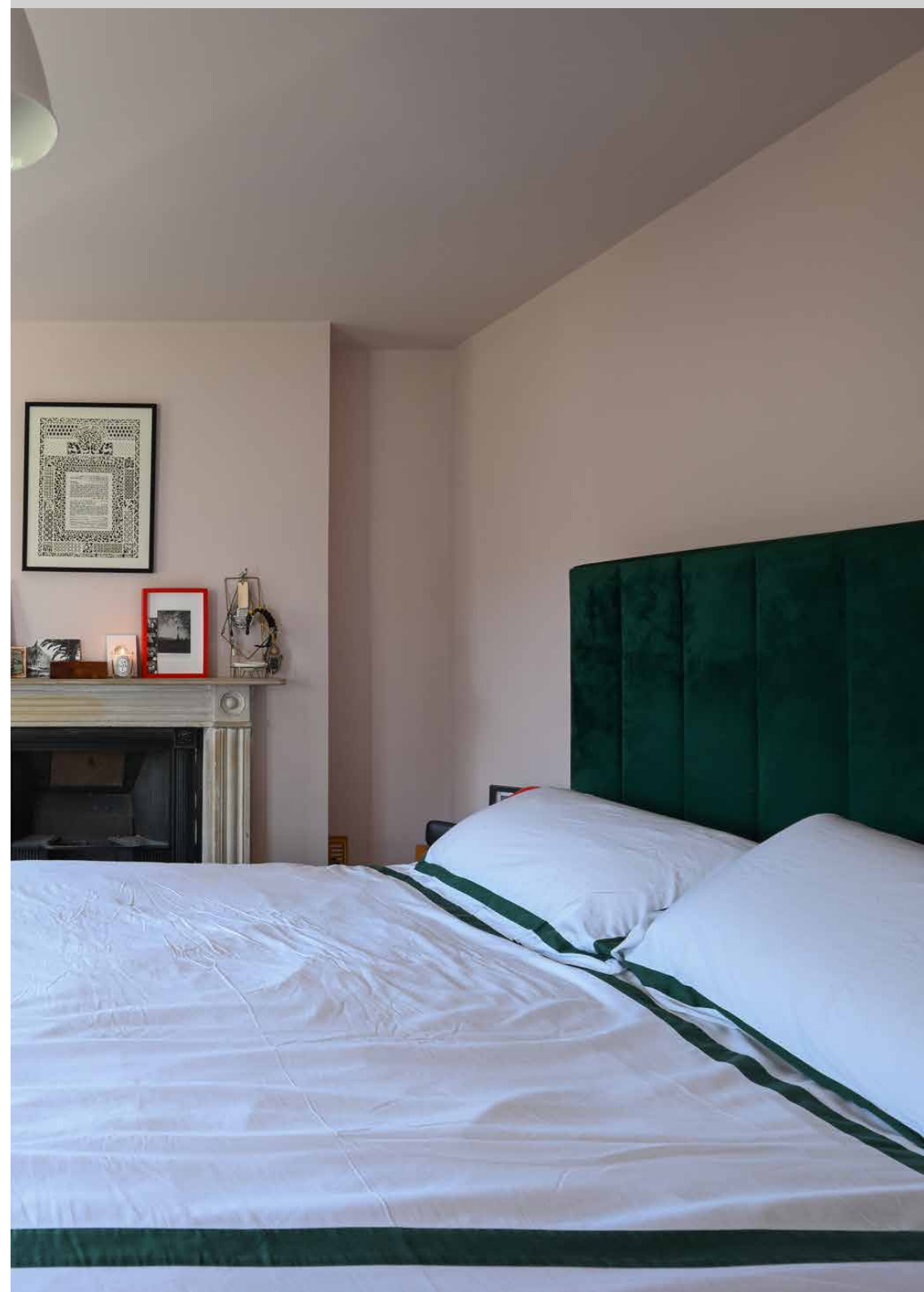








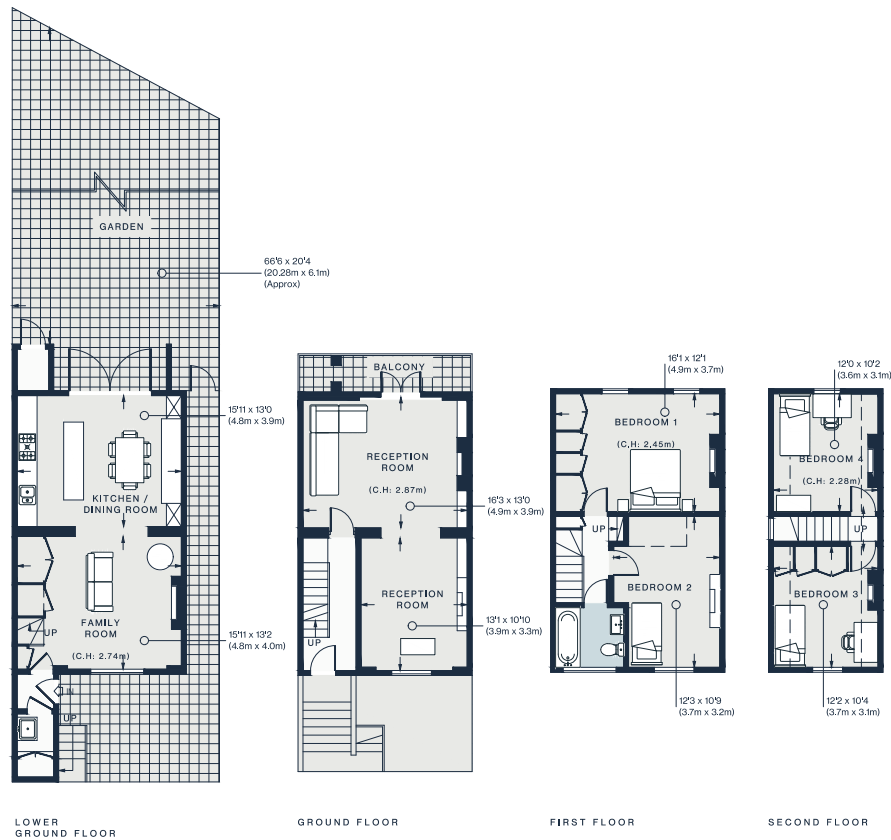
The principal bedroom on the second floor is a study in tranquillity, with sash windows and a feature fireplace. Three additional bedrooms – each one vibrant and characterful – share a stylish family bathroom clad in Fired Earth tiles, outfitted with Lefroy & Brookes fittings and a generous bathtub.











Approx. Gross Internal Area = 1633 sq ft / 151.7 sq m

Floor plans are for illustrative purposes only and not to scale. Compliant with RICS code of measuring practice.

Property Details

Open-plan kitchen, dining and reception room
 Double reception room
 Principal bedroom
 Three further bedrooms
 Family bathroom
 Private garden
 Borough of Hammersmith & Fulham

Approx. 1,633 sq ft / 151.7 sq m

EPC=D

Tenure: Freehold

Council Tax Band: G



Location

Between riverside calm and city-bound buzz, this home benefits from the best of both worlds. From the Westway down to the River Thames, coveted restaurants and generations-old weekly markets prove W12's commitment to the local community. Natural tranquillity comes in the form of Ravenscourt Park, through which you'll reach Brackenbury Village, replete with independent delis and cafes. Stock up on produce or source textiles and clothing at the Shepherd's Bush street market, or head to The Village at Westfield for luxury shopping. Dine at Sam's Riverside, The River Cafe or The Dove before a night of culture at the Grade-II listed Eventim Apollo, Lyric Theatre or O2 Shepherd's Bush.

Goldhawk Road - 3 mins (Circle, Hammersmith & City)

Specialising in London
and Ibiza's design-led homes

Let's talk
020 7221 7817
sales@domusnova.com
domusnova.com

The particulars above are a guide, not an offer or contract. Descriptions, photographs and plans are not statements or representations of fact. Measurements are approximate and not to scale. Prospective purchasers must verify the accuracy of the information within the particulars. Domus Nova does not give any representations or warranties; nor represent the Seller legally. Domus Nova has no liability, for any costs, losses or expenses incurred by the Seller or a prospective buyer relating to the sales and buying transaction.

Our Sales Disclaimer, trading names and privacy policy on how your data is processed and used is found in full on our website in our [Privacy Statement](#).

© Domus Nova 2025. All rights reserved.