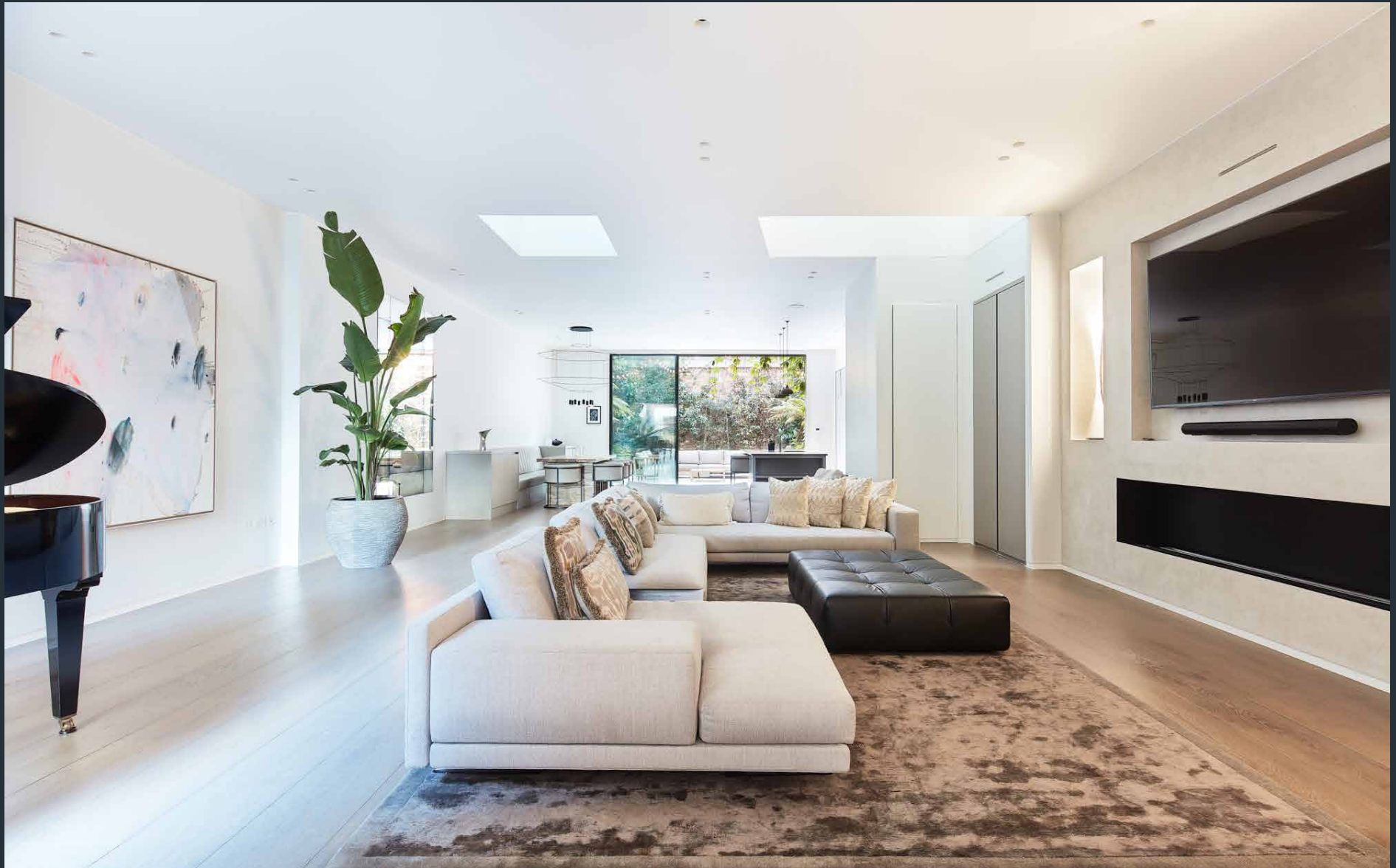


DOMUS NOVA



Rede Place W2
£30,000 p/w - Short let



A gallery of contemporary design. In a quiet Notting Hill enclave, this six-bedroom home for rent is an inspiring canvas modern family living.

Tucked away on a former mews lane, pioneering design is sewn into the sprawling framework of this six-bedroom family home. Behind its understated brick façade, Rede Place's period bones have been flawlessly reimaged with luxury interventions across five floors – all connected by an inspiring helical staircase.

A cobbled pathway with black metal trellises and verdant climbers make for an inviting entrance into the property. The open-plan kitchen, dining and reception room is awe-inspiring in scale and style. A refined interior palette of hardwood floors and pale walls are illuminated through skylights and floor-to-ceiling dual aspect glazing. Modish furnishings delineate the space; an L-shaped sofa and grand piano around the contemporary fireplace, a marble dining table with banquette seating and a state-of-the-art kitchen with Gaggenau appliances. There's a seamlessness drawn to the garden through the full height sliding doors. With soaring brick walls and an array of plants, it's a private urban oasis suited for entertaining in sunny climes.









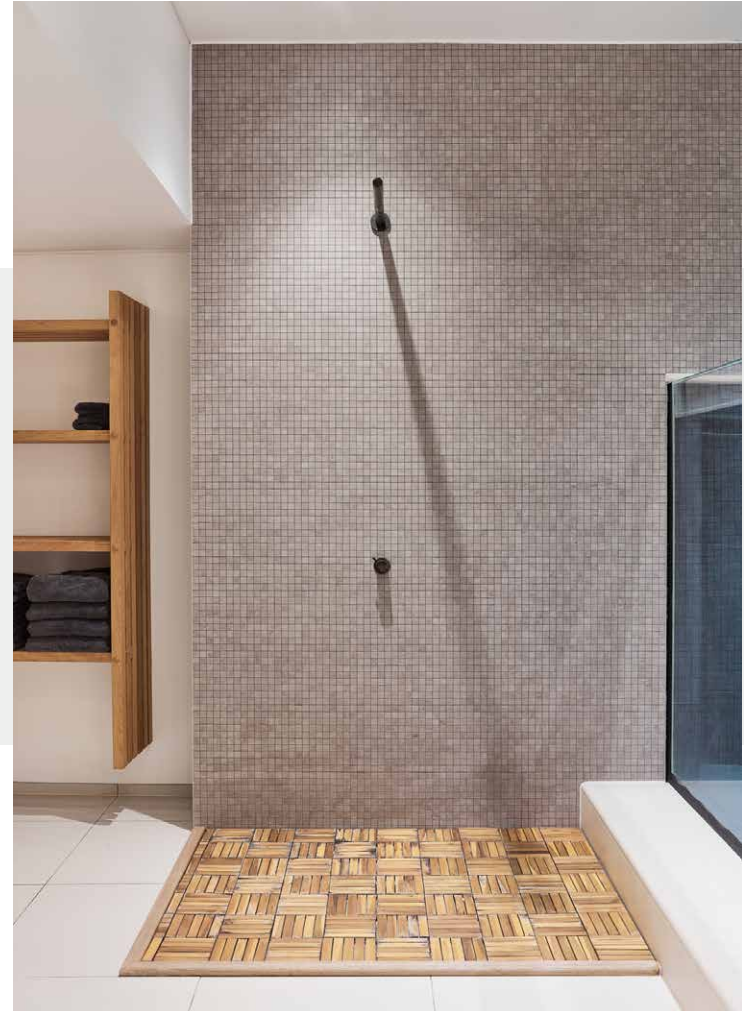
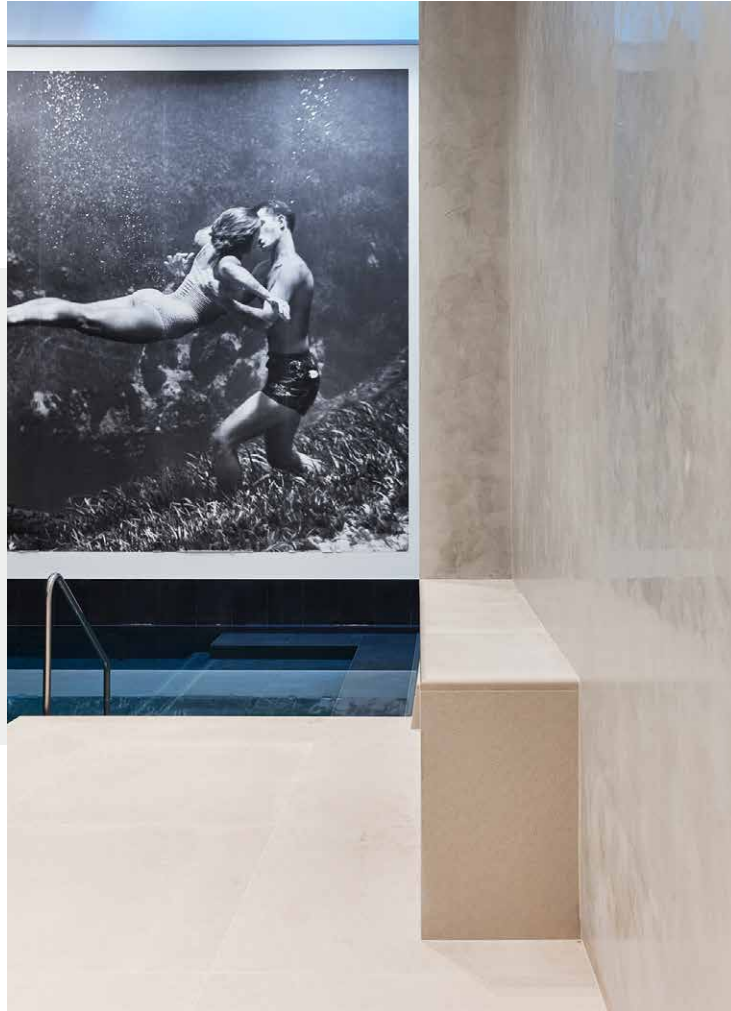












Family life continues on the lower-ground floor, where a living area, games room and home bar are dramatically finished with dark tones and spot lighting. Underfloor heating keeps the setting cosy, a feature that runs throughout the home. The luxe sofas are positioned by large windows that overlook the double-height swimming pool on the storey below. It's a showpiece of cutting-edge design: glass panels give visibility to the azure water from the changing area, which leads to a high-spec sauna and gym.







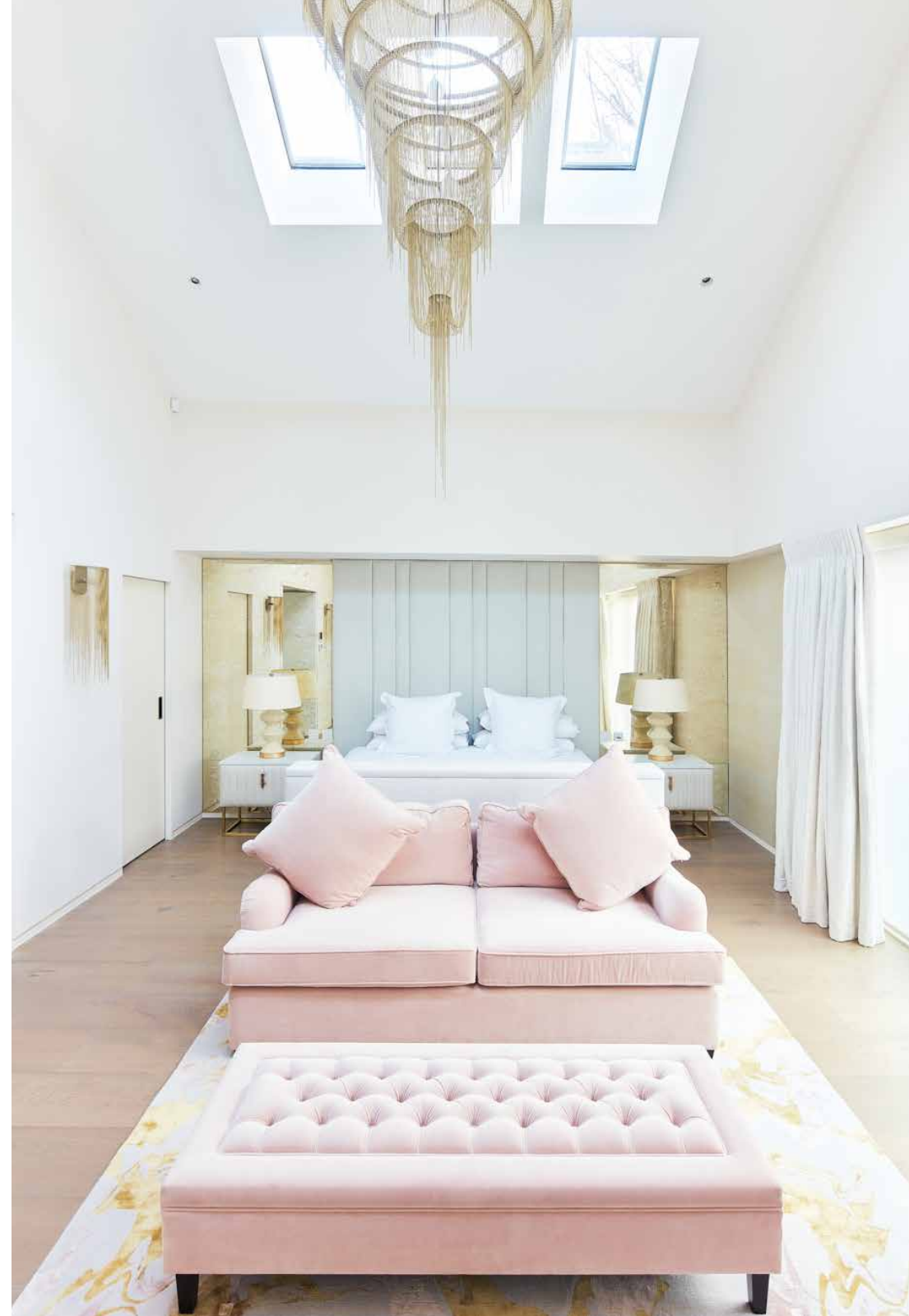




The home's haute interiors and spacious proportions ensue in the air-conditioned bedrooms, spread across the upper two levels. The principal bedroom suite has an immense sense of volume, courtesy of a double-height vaulted ceiling – neatly engineered with skylights.

To one side of the room, a sliding door reveals a dressing room. To the other, an en suite bathroom pairs glossy marble walls with oversized tiles, setting a stylish scene for the dual vanity, deep-seated bath and frameless shower.

Also occupying the first floor are three immaculately-presented guest bedroom suites, each with fitted wardrobes and swathes of natural light. An additional bedroom and study space can be found at the top of the home, with a multitude of skylights affording an uplifting character. On the ground floor, a self-contained one-bedroom studio can be used as staff or guest accommodation.





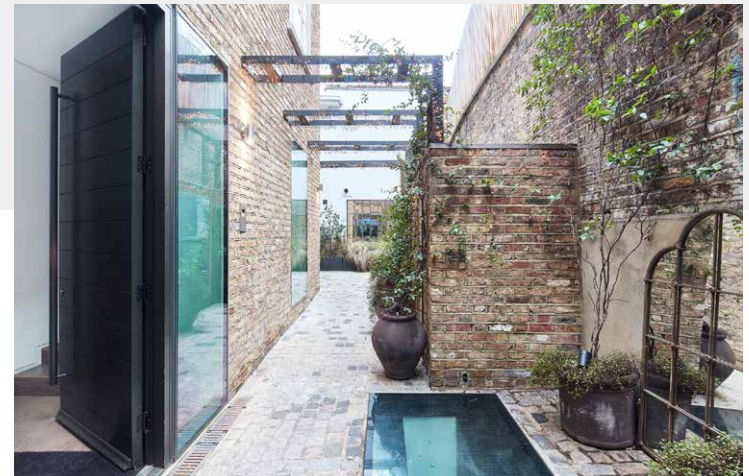














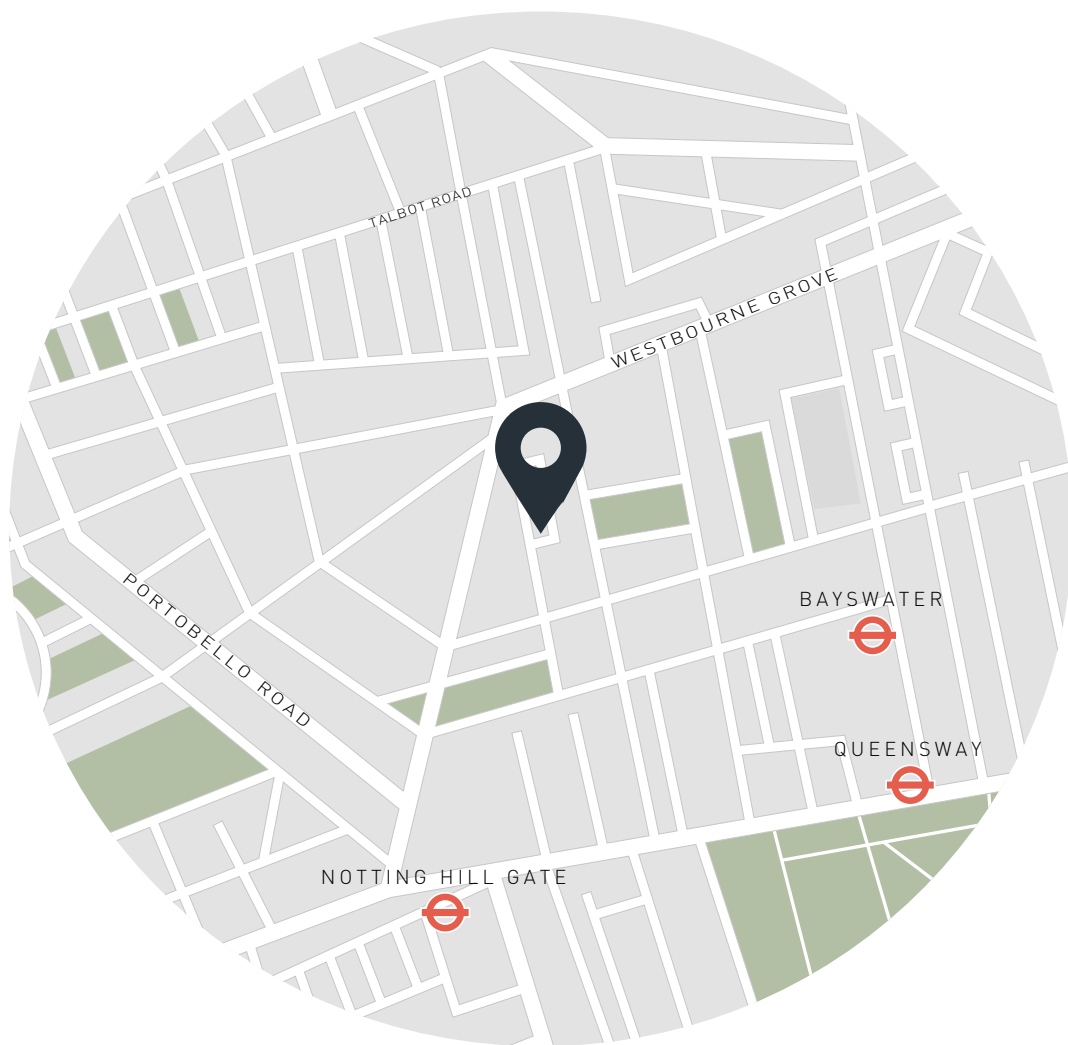
Property Details

- 6 bedrooms
- 7 bathrooms
- Open-plan kitchen, dining and reception room
- Family room with home bar
- Principal bedroom suite with dressing room
- Three guest bedroom suites
- One further bedroom
- Self-contained studio with bedroom and shower room
- Study
- Cinema and games room
- Double-height swimming pool
- Gym
- Sauna
- Private garden
- City of Westminster

EPC = B
Council Tax Band - H
Deposit Payable - £120,000

Approx. Gross Internal Area = 8,156 sq ft / 757.8 sq m (Including Mezzanine/ Excluding Void / Eaves)

Floor plans are for illustrative purposes only and not to scale. Compliant with RICS code of measuring practice. Furniture layouts are indicative only. This property may be furnished, part-furnished or unfurnished. Please refer to your agent for details.



Location

Notting Hill's charm can be found in its community spirit and its tapestry of local businesses. The fashionable boutiques and artisanal brunch spots of Westbourne Grove are just a few minutes away, as are the grassy lawns of Hyde Park. Daylesford Organic Farm Shop and Planet Organic are conveniently located for grocery essentials. Portobello Road is a treasure trove of vintage finds – spend a day browsing the stalls before a film at the Electric Cinema and dinner at Gold.

Bayswater – 8 mins (Circle, District)

Notting Hill Gate – 8 mins (Central, District, Circle)

Specialising in London
and Ibiza's design-led homes

Let's talk
020 7727 1717
lettings@domusnova.com
domusnova.com

The property particulars are a guide not statements. Descriptions, photographs, and plans are for guidance and should be checked by the prospective tenant. The Property is offered "subject to contract and references". No warranties, representations, or Tenancy is given by Domus Nova. Expenses incurred by a prospective tenant will not be reimbursed if the Landlord withdraws prior to the Tenancy Agreement being signed, dated and exchanged and cleared funds received. Furniture and other items shown in a property at viewing may belong to a current tenant. The prospective tenant should verify in writing which fixtures and fittings forms part of the Tenancy. Our full lettings disclaimer together with trading names and our [Privacy Policy](#) is shown on our website