

DOMUS NOVA

Rede Place

Westminster W2

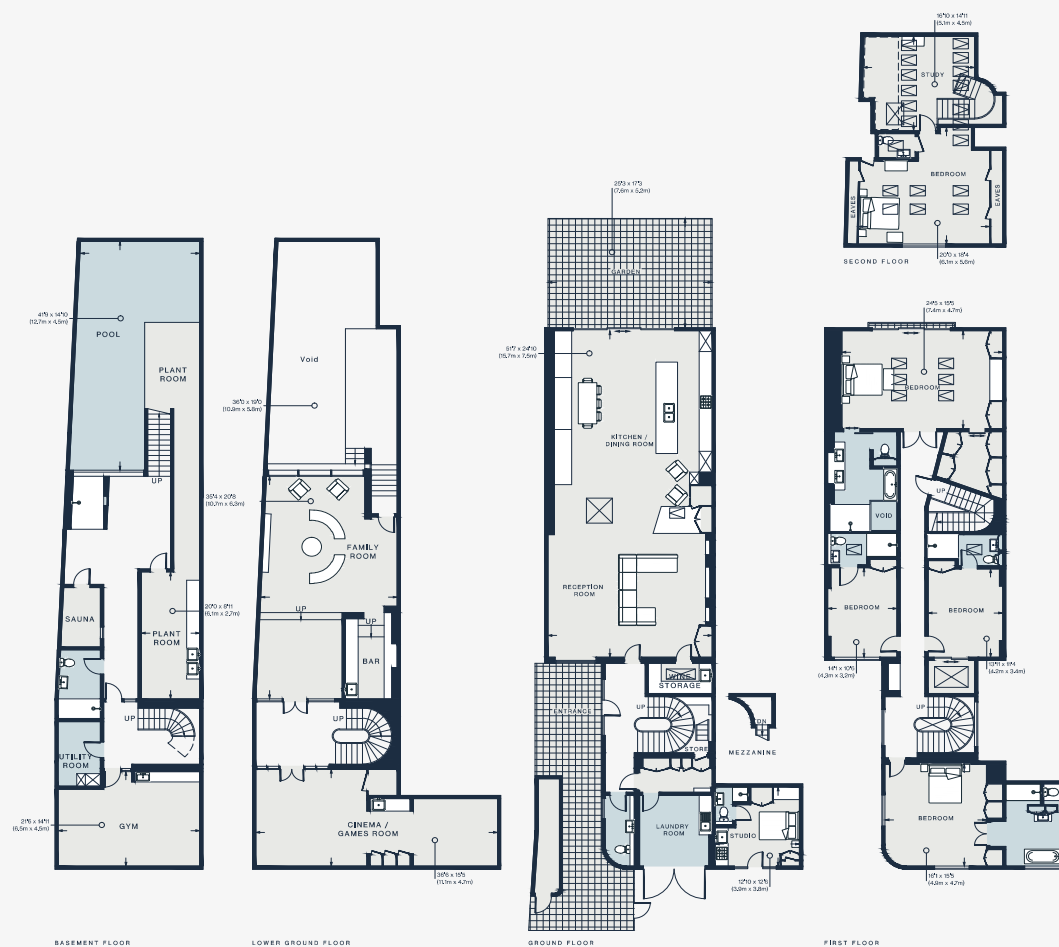
APPROXIMATE GROSS INTERNAL AREA

8,156 sq ft / 757.8 sq m

020 7727 1717

domusnova.com

LONDON | IBIZA



Approx. Gross Internal Area = 8,156 sq ft / 757.8 sq m (Including Mezzanine/ Excluding Void / Eaves)

Floor plans are for illustrative purposes only and not to scale. Compliant with RICS code of measuring practice. Furniture layouts are indicative only. This property may be furnished, part-furnished or unfurnished. Please refer to your agent for details.