

DOMUS NOVA



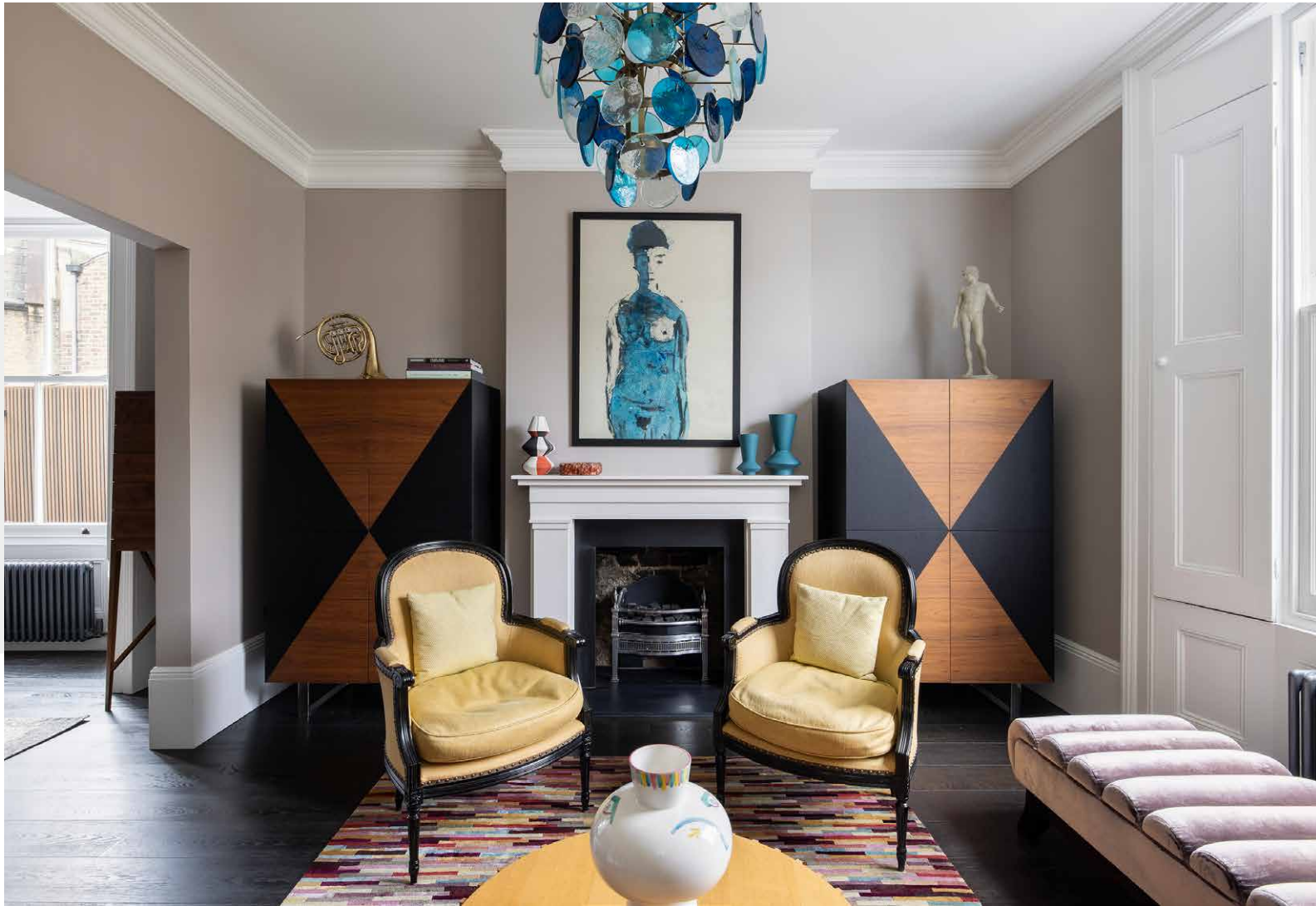
Ravenscourt Road W6

£3,500 p/w - Short Let

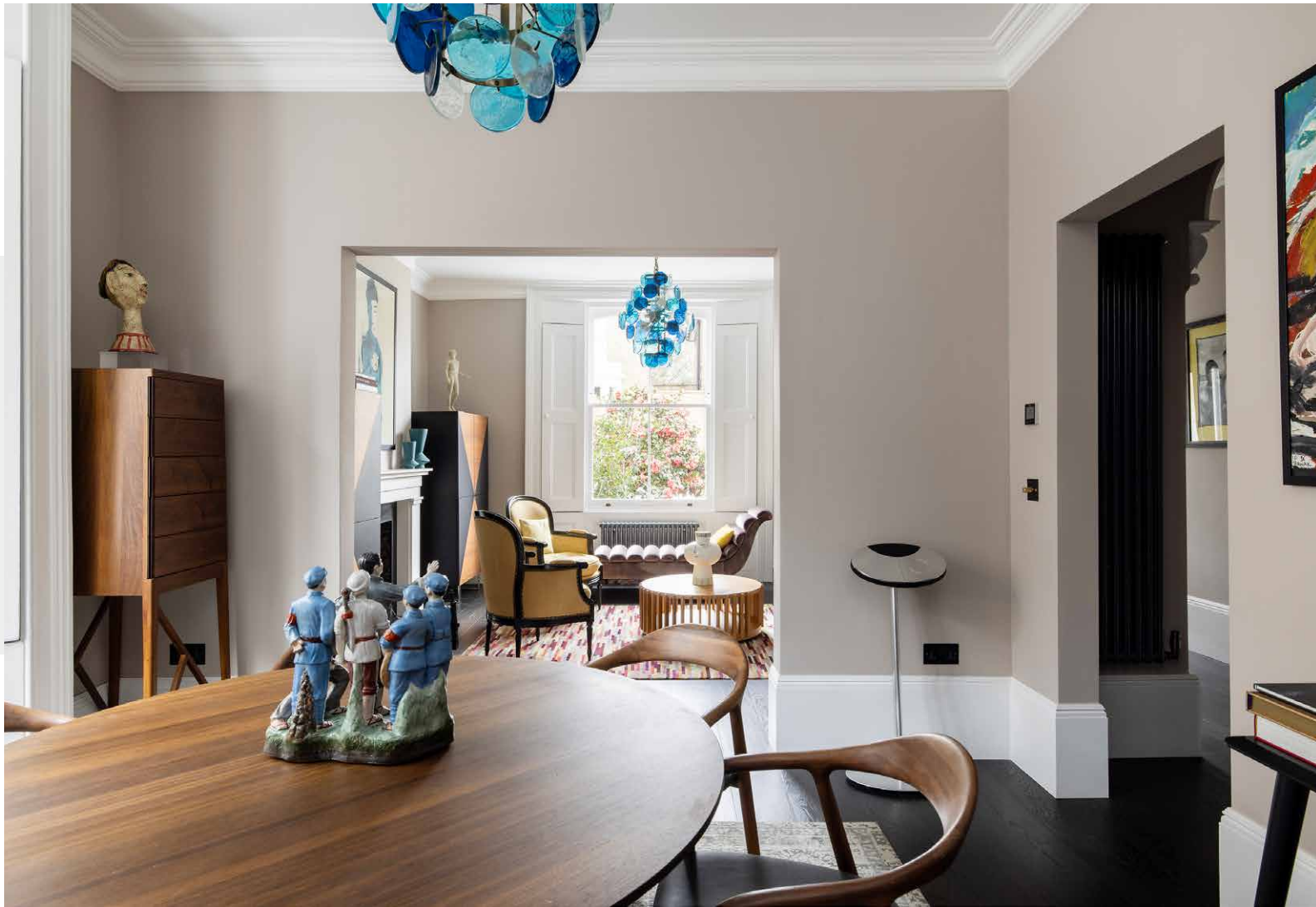


A sophisticated three-bedroom townhouse in Hammersmith marrying period architecture and considered design decisions. This elegant home spotlights striking artwork and imaginative interiors.

A short stroll from the lawns of Ravenscourt Park, a design-led home pairs heritage details and design elements that leave a lasting impression. The open-plan reception and dining room is grounded by a traditional fireplace. Eye-catching artwork by Ashika Sharma takes centre stage while a large sash window invites natural light in, lifting the atmosphere of the space.







Matching textured glass chandeliers adorn the reception and dining areas, with the latter space benefiting from a generous bay window. Guided by high skirting boards, hardwood floors flow into a modern, eat-in kitchen.

White marble worktops pop against grey walls. Integrated appliances and glossy minimalistic cabinetry form seamless clean lines, contrasted by an eclectic gallery wall above. Meanwhile, Eero Aarnio's iconic "dog" sculptures make for an aesthetic backdrop.

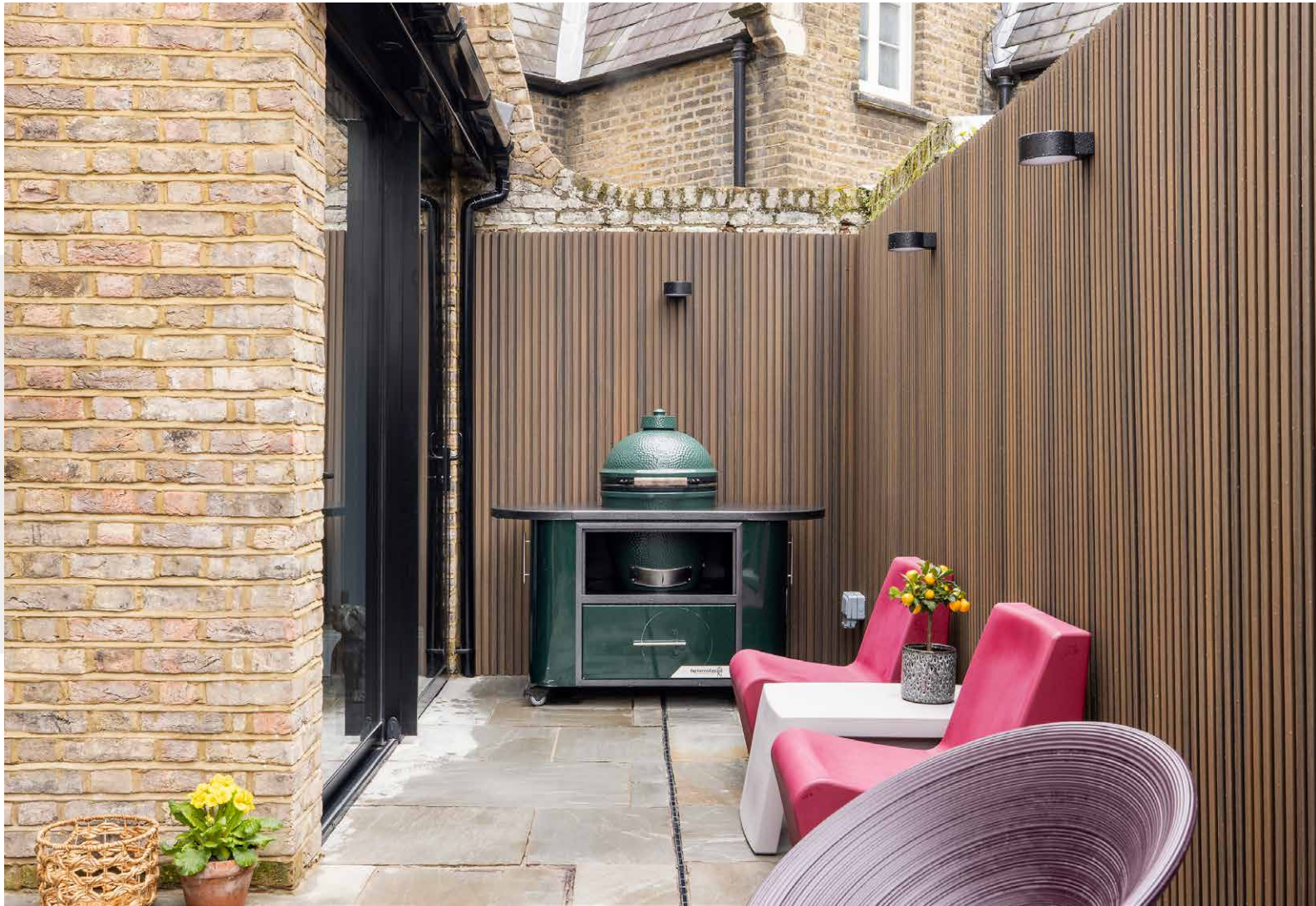
From here, sliding glass doors lead to a peaceful patio garden, featuring a Big Green Egg barbecue and a comfortable seating area.

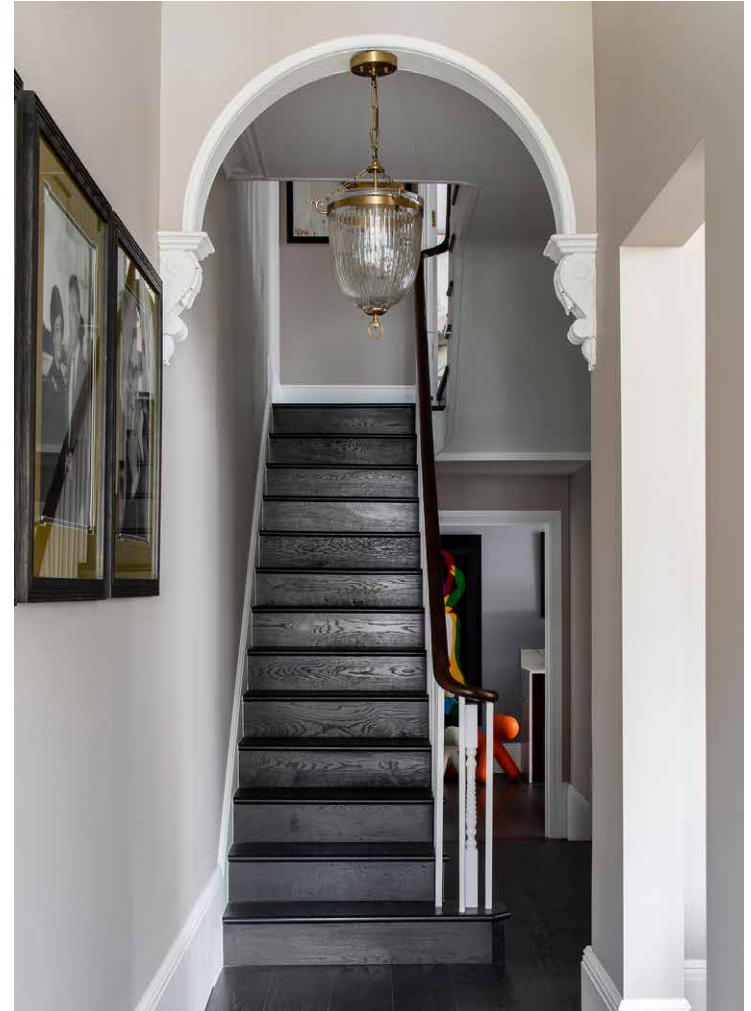


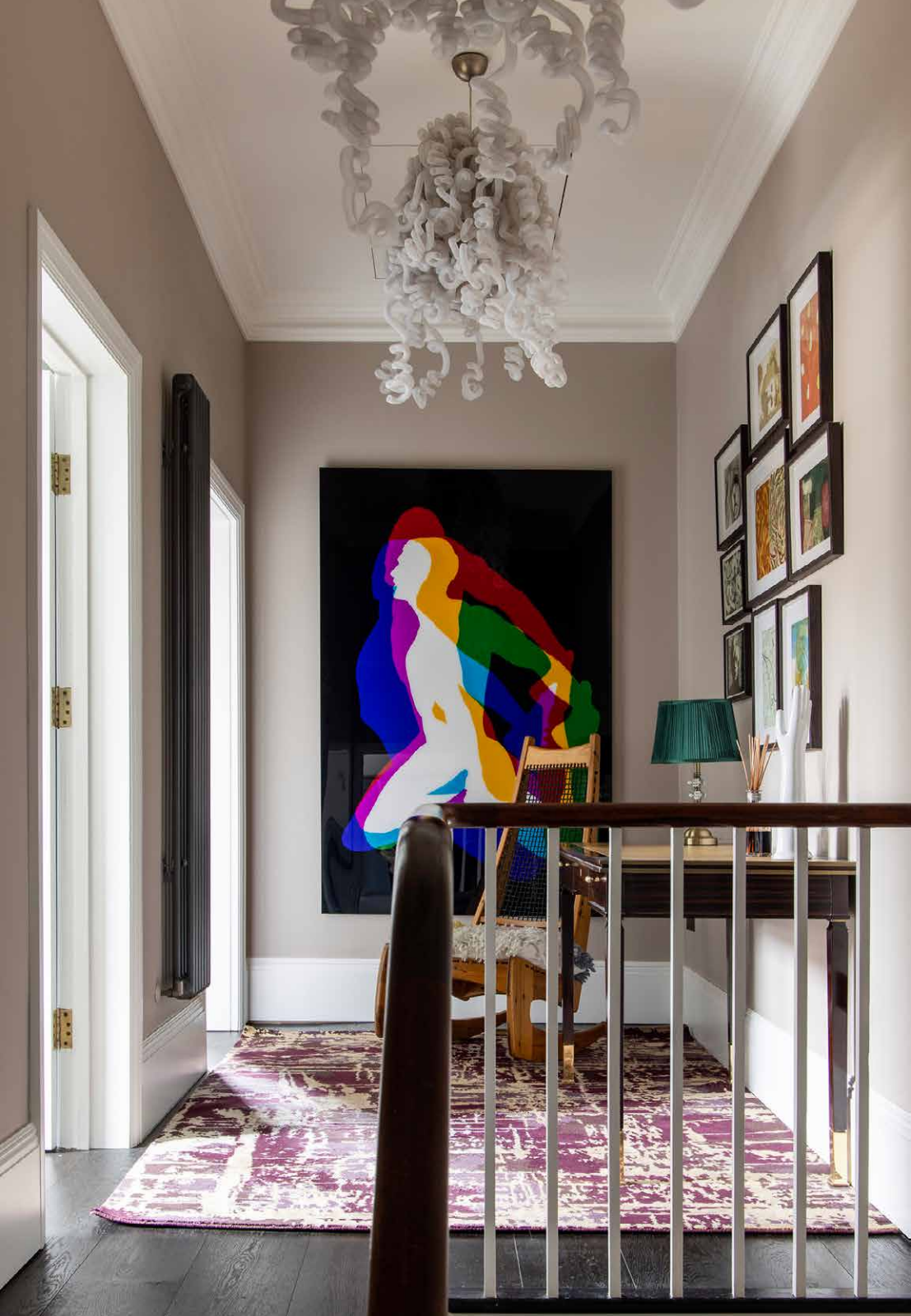








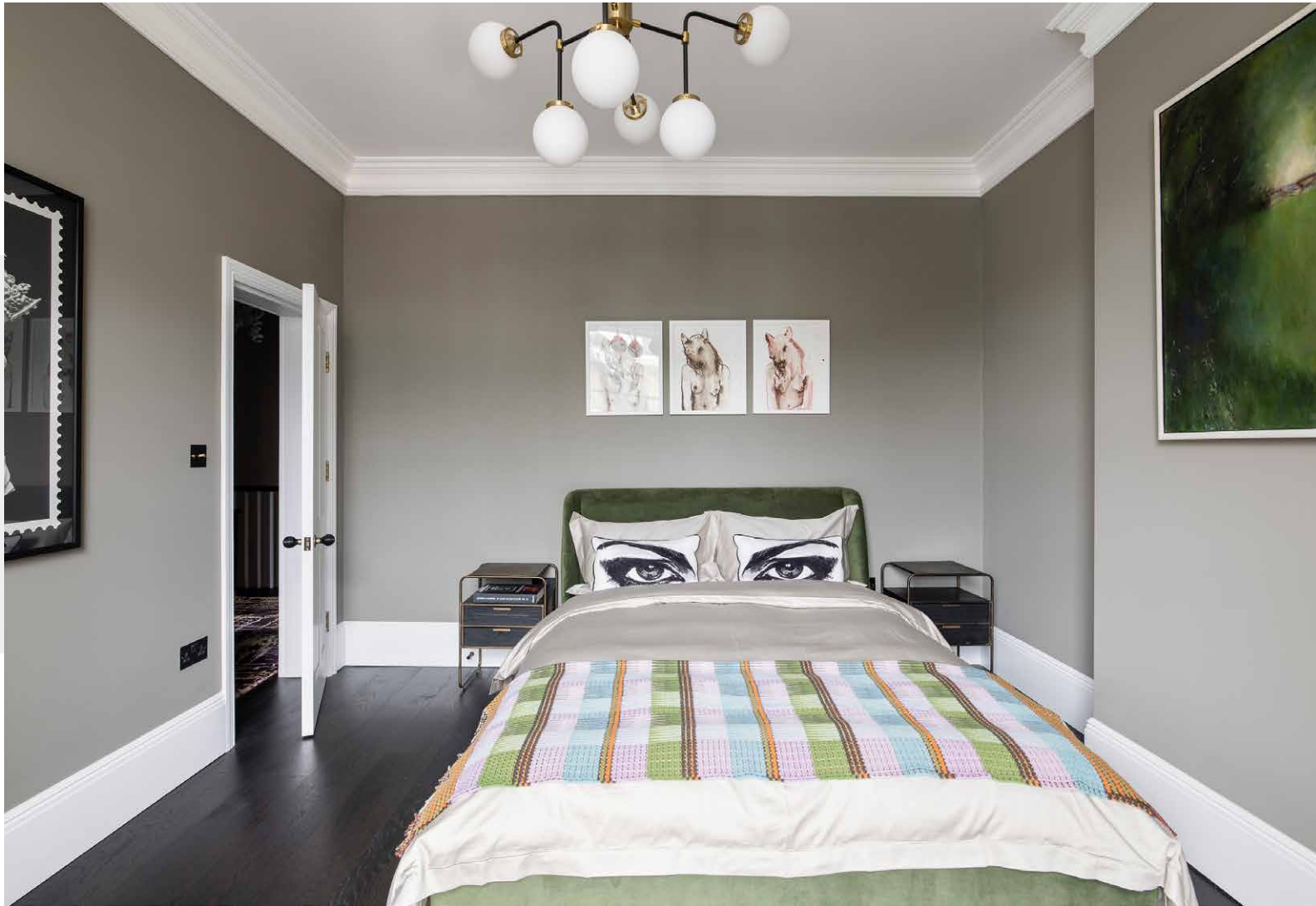




Taking the first floor, a spacious principal bedroom exudes calmness. Neutral tones frame popping accents such as a contemporary orb chandelier. This room features an en suite bathroom with a floating counter vanity, freestanding bath and striking black and gold wallpaper by Lewis & Wood.

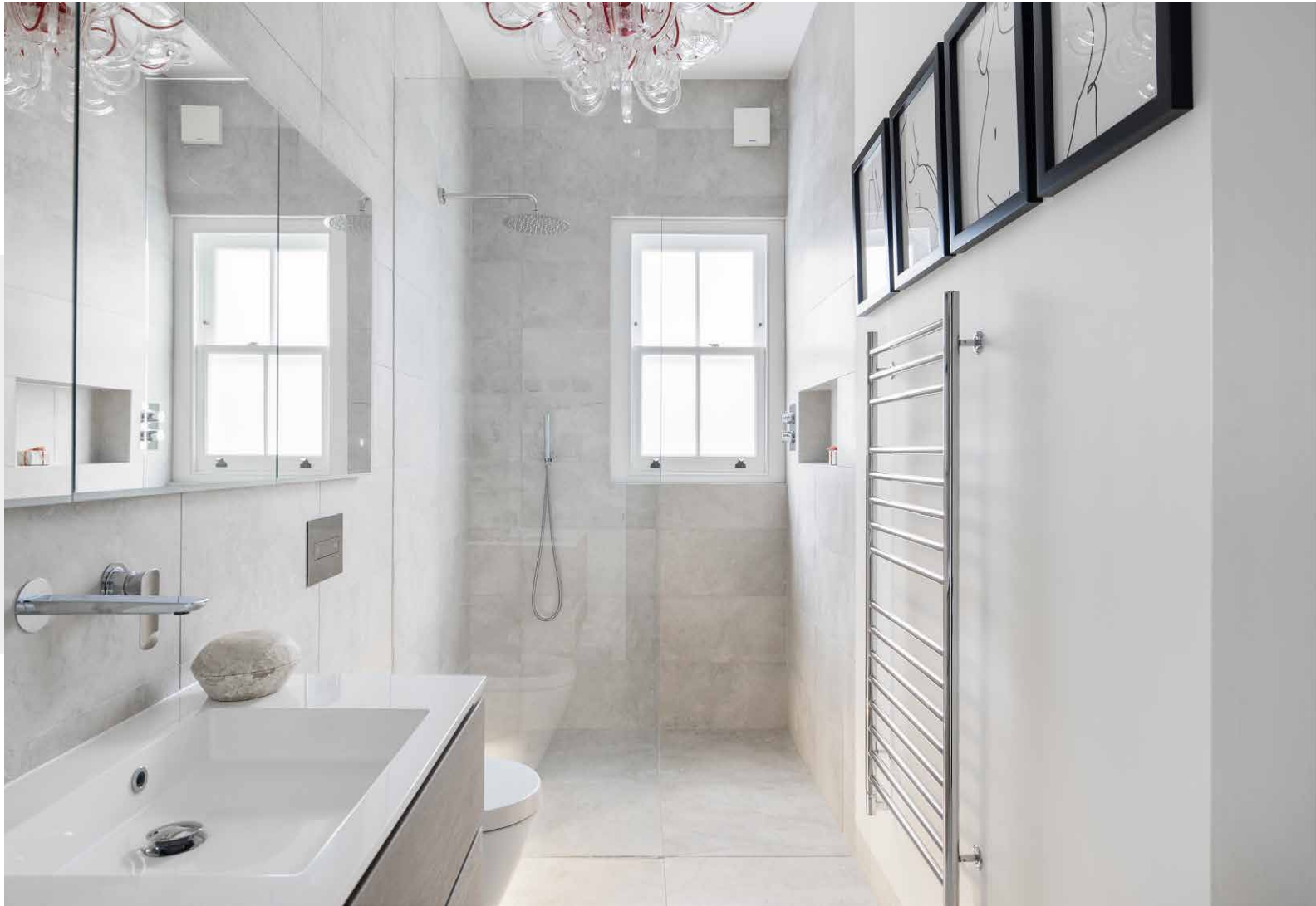
Two additional bedrooms combine soothing tones, fitted storage and natural light, with the third bedroom doubling as a TV room. A family bathroom enjoys a walk-in rainfall shower and a sculptural glass chandelier.





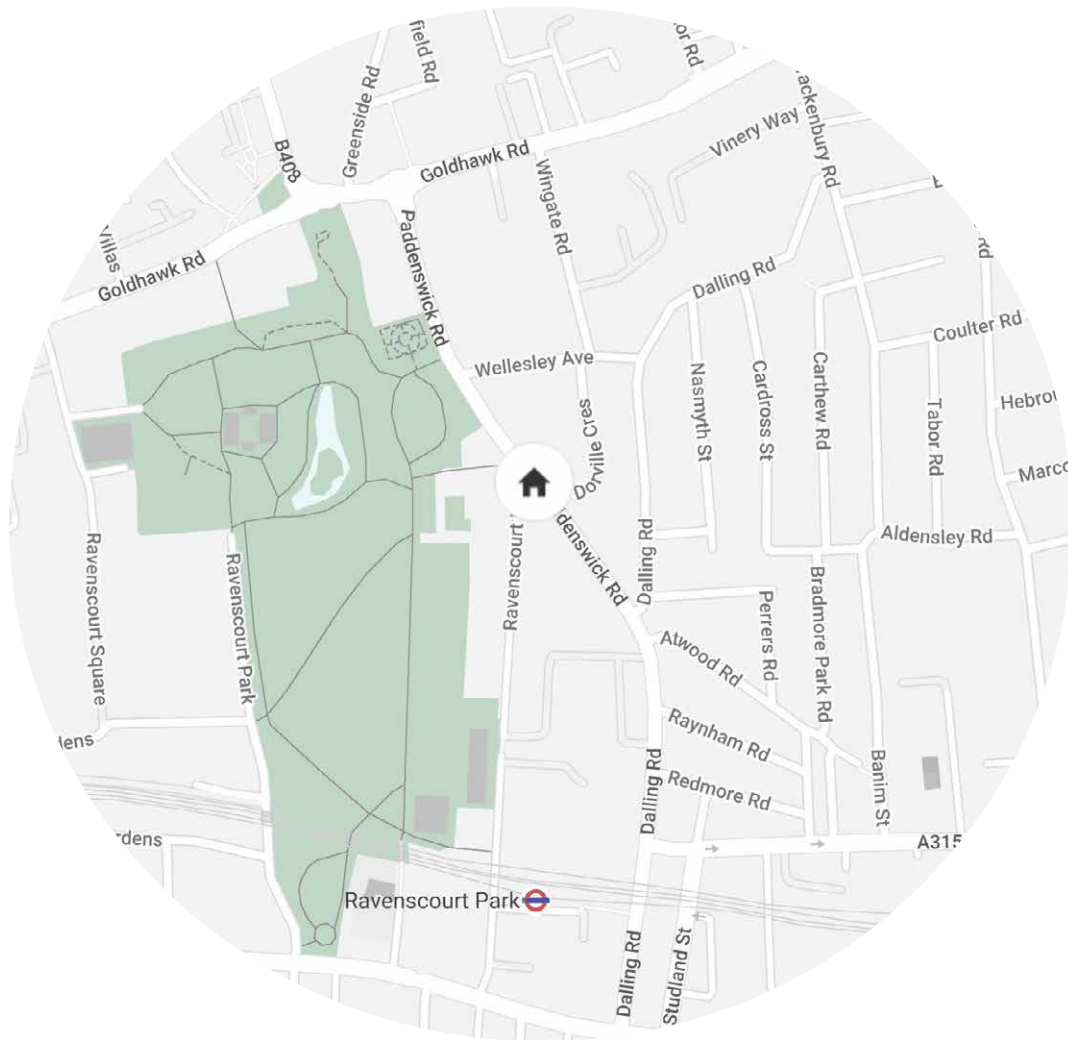








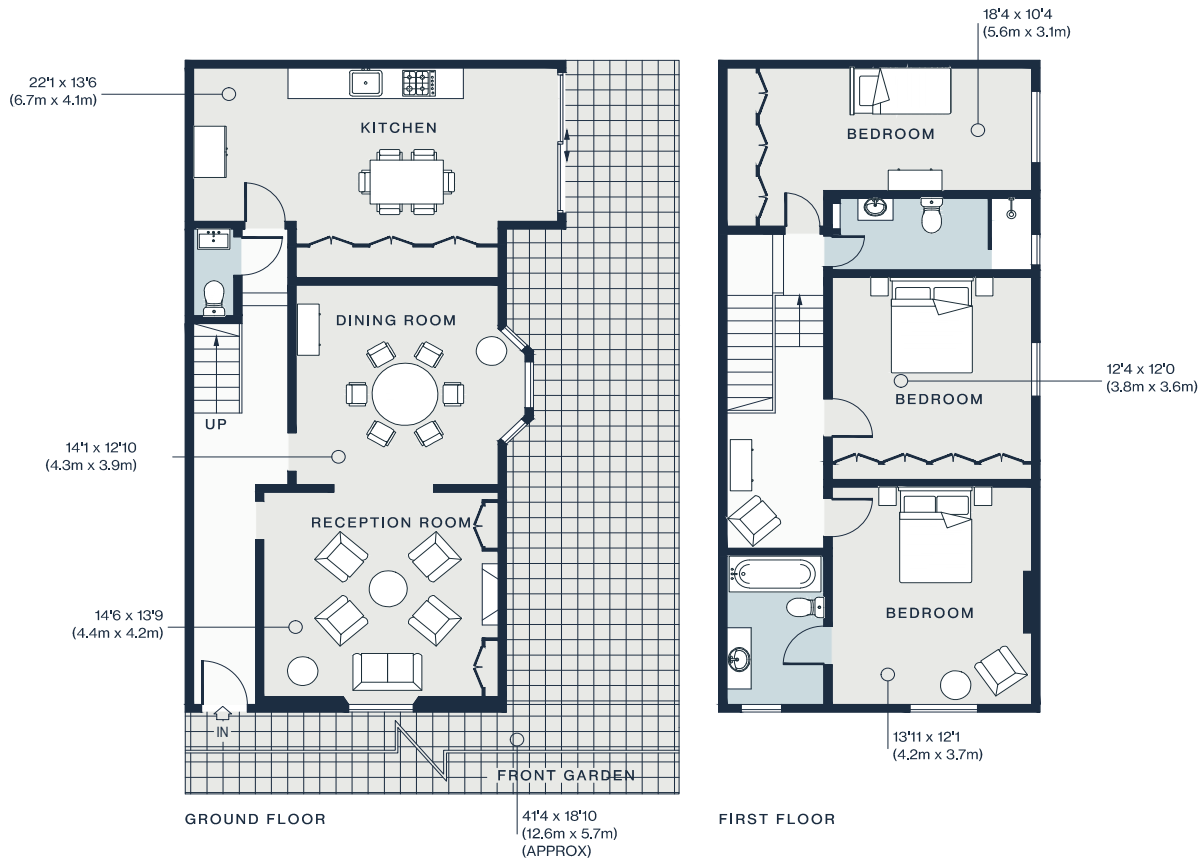




Location

Ravenscourt Road is a quiet suburban street a stone's throw from Ravenscourt Park, which caters to sports enthusiasts with tennis courts and football pitches. Those seeking tranquillity can take a stroll across its lush lawns or through the wooded trails. Hammersmith's dining scene caters to all tastes. Local favourites include The Brakenbury Wine Rooms, Flame & Fire and Michelin-starred The River Café. Ravenscourt Park station is just a four-minute walk away, providing easy access to the city.

Nearest tube:
Ravenscourt Park - 4 mins



Property Details

- Open-plan reception and dining room
- Modern kitchen
- Principal bedroom suite
- Two further bedrooms
- One bedroom can serve as a TV room
- Family bathroom
- Large patio garden
- Borough of Hammersmith and Fulham

Approx 1,553 sq ft / 144.3 sq m
EPC - C
Deposit Payable - £14,000

Approx. Gross Internal Area = 1,553 sq ft / 144.3 sq m

Floor plans are for illustrative purposes only and not to scale. Compliant with RICS code of measuring practice.
Furniture layouts are indicative only. This property may be furnished, part-furnished or unfurnished. Please refer to your agent for details.

Specialising in London
and Ibiza's design-led homes

Let's talk
020 7727 1717
lettings@domusnova.com
domusnova.com

The property particulars are a guide not statements. Descriptions, photographs, and plans are for guidance and should be checked by the prospective tenant. The Property is offered "subject to contract and references". No warranties, representations, or Tenancy is given by Domus Nova. Expenses incurred by a prospective tenant will not be reimbursed if the Landlord withdraws prior to the Tenancy Agreement being signed, dated and exchanged and cleared funds received. Furniture and other items shown in a property at viewing may belong to a current tenant. The prospective tenant should verify in writing which fixtures and fittings forms part of the Tenancy. Our full lettings disclaimer together with trading names and our [Privacy Policy](#) is shown on our website