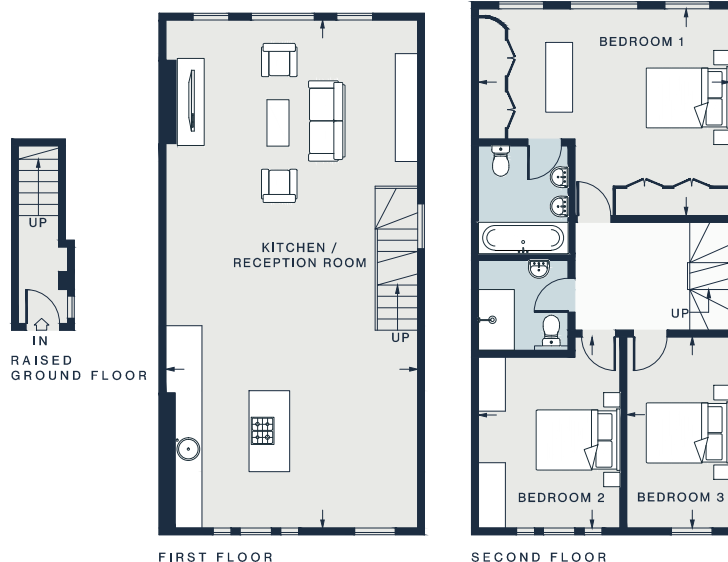




THIRD FLOOR



FIRST FLOOR

SECOND FLOOR

KITCHEN /  
RECEPTION ROOM  
37'2 x 18'5 (11.3m x 5.6m)

BEDROOM 1  
18'2 x 14'11 (5.5m x 4.6m)

BEDROOM 2  
14'0 x 10'1 (4.3m x 3.1m)

BEDROOM 3  
14'0 x 7'8 (4.3m x 2.3m)

DRESSING ROOM  
14'10 x 10'5 (4.5m x 3.2m)

Approx. Gross Internal Area = 2,027 sq ft / 188 sq m

Floor plans are for illustrative purposes only and not to scale. Compliant with RICS code of measuring practice.