

DOMUS NOVA

Queensdale Road

Holland Park W11

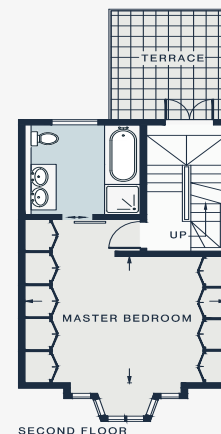
APPROXIMATE GROSS INTERNAL AREA

1,410 sq ft / 131 sq m

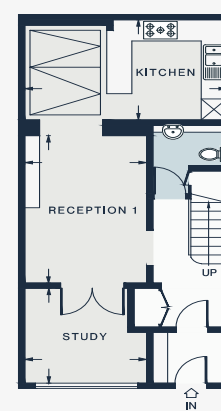
020 7727 1717

domusnova.com

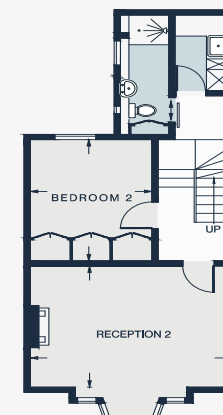
LONDON | IBIZA



SECOND FLOOR



GROUND FLOOR



FIRST FLOOR

RECEPTION 1
15'3 x 9'5 (4.6m x 2.8m)

KITCHEN
16'0 x 9'3 (4.8m x 2.8m)

RECEPTION 2
15'11 x 11'4 (4.8m x 3.4m)

STUDY
9'4 x 8'11 (2.8m x 2.7m)

MASTER BEDROOM
15'8 x 11'10 (4.7m x 3.6m)

BEDROOM 2
11'3 x 9'3 (3.4m x 2.8m)

Floor plans are for illustrative purposes only and not to scale. Compliant with RICS code of measuring practice. Furniture layouts are indicative only. This property may be furnished, part-furnished or unfurnished. Please refer to your agent for details.