

DOMUS NOVA



Queens Gate, SW7
£3,000,000



In the middle of this historic South Kensington street – bookended by Kensington Gardens and Old Brompton Road – is an elegant three-bedroom apartment. Spread across the second floor of a handsome period townhouse, the lateral home exudes sophistication with its carefully considered tonal scheme, quality materials and timeless finishes – imagined by the interior design experts at Robelia.

From the home's entrance, bi-folding doors reveal an open-plan kitchen, dining and reception room. Immaculately-laid Versailles flooring spans the entire space, complemented by the neat wainscoting across the walls. Natural light is diffused through two large French windows, while a contemporary pendant light provides a warm glow when night draws in. A log fireplace makes for a cosy focal point for the living area, or if the weather's nice, head out through the glass doors to a private balcony – it's framed with ornate cast-iron railings and backdropped by leafy trees.













“Immaculately-laid Versailles flooring spans the entire space, complemented by the neat wainscoting across the walls.





A wide archway, finished with Arabescato Vagli marble, leads into the kitchen and dining area. There's a calming atmosphere to the setting, with its high ceilings, neutral walls and reams of sunlight. Designed by Bakehouse, the bespoke sage-green kitchen cabinetry is paired with smooth whitewashed worktops and Swadling bronze tapware. Integrated Miele appliances keep things streamlined for all manner of culinary endeavours. If you're entertaining, there's also a built-in mirrored bar unit behind the living area.

Refined minimalism is the order of the day in Queens Gate's three bedrooms. The principal suite has a spacious footprint, introduced with smart wood floors arranged diagonally. Its en suite bathroom is a calming affair, finished with pale marble tiling and a rainfall shower. Two guest bedrooms are served by a large bathroom, wrapped in Arabescato Vagli marble and featuring an indulgent bath tub.

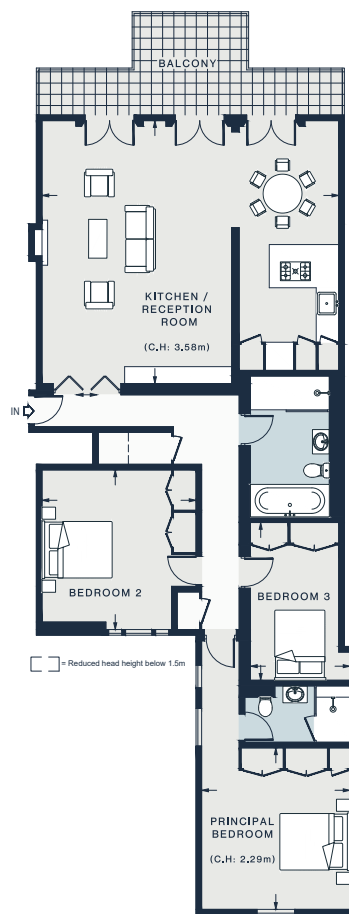












SECOND FLOOR

KITCHEN / RECEPTION ROOM

25'11 x 23'0 (7.9m x 7.0m)

BEDROOM 2

14'0 x 13'4 (4.2m x 4.0m)

PRINCIPAL BEDROOM

14'2 x 13'1 (4.3m x 3.9m)

BEDROOM 3

13'9 x 8'9 (4.1m x 2.6m)

Approx. Gross Internal Area = 1,452 sq ft / 134.9 sq m

Property Details

Interior design by Robelia

Open-plan kitchen, dining and reception room

Principal bedroom suite

Two further bedrooms

One further bathroom

Private balcony

Royal Borough of Kensington & Chelsea

Approx. 1,452 sq ft / 134.9 sq m

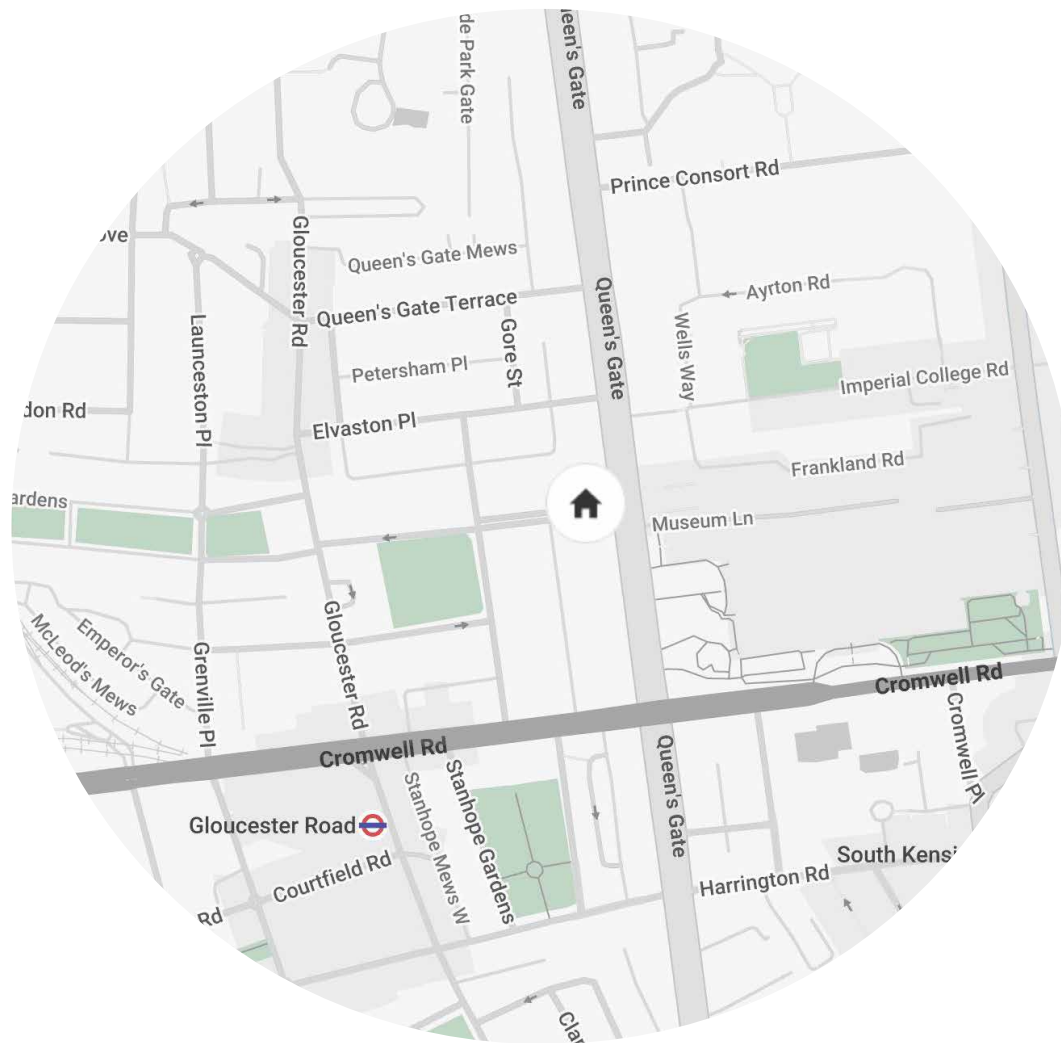
EPC= C

Tenure: Leasehold

Lease Length: circa 170 years

Council Tax Band: H

Service charge: £8,000 per annum



Location

Running parallel to Exhibition Road, Queens Gate is poised to enjoy the capital's best museums and culture. Coveted local restaurants such as Wild Tavern, Le Petit Beefbar and Zuma are perfect for get-togethers after a stroll around Hyde Park, with its sprawling lawns and outdoor lido. For a day of shopping, there's Kensington High Street to the north, Chelsea's iconic Kings Road to the south and the upmarket department stores of Knightbridge to the east – followed by a performance closer to home at The Royal Albert Hall. Head to coveted haunt the Troubadour for an evening of live music, followed by a cocktail at one of London's best speakeasies, Evans & Peel Detective Agency.

South Kensington- 6 mins (Circle, District, Piccadilly)

Specialising in London
and Ibiza's design-led homes

Let's talk
020 7221 7817
sales@domusnova.com
domusnova.com

The particulars above are a guide, not an offer or contract. Descriptions, photographs and plans are not statements or representations of fact. Measurements are approximate and not to scale. Prospective purchasers must verify the accuracy of the information within the particulars. Domus Nova does not give any representations or warranties; nor represent the Seller legally. Domus Nova has no liability, for any costs, losses or expenses incurred by the Seller or a prospective buyer relating to the sales and buying transaction.

Our Sales Disclaimer, trading names and privacy policy on how your data is processed and used is found in full on our website in our [Privacy Statement](#).

© Domus Nova 2025. All rights reserved.