

# DOMUS NOVA



Princes Mews, W2  
£1,795,000





Set at the quiet end of Princes Mews, there's a calm, secluded quality to its position – a rare stillness just moments from the buzz of Notting Hill and Hyde Park. The home itself impresses on arrival, its blonde-brick façade punctuated by tall sash windows and French doors that invite the outside in.

Inside, clean-lined interiors unfold across three levels. Beyond the glossy black front door, there's a sense of calm intention to the layout. To the right, the dining and reception room feels thoughtfully convivial – deep honey-hued floorboards flow underfoot, while a restrained palette sets the stage for natural light to move throughout. Glass double doors open directly onto the mews: the perfect spot to linger with morning coffee or evening cocktails when the weather obliges. Opposite, the kitchen is crisp and contemporary – white cabinetry, black counters, and soft sage metro tiles come together in a palette that feels current yet timeless.













Aperol Spritz



beko

Beko

beko



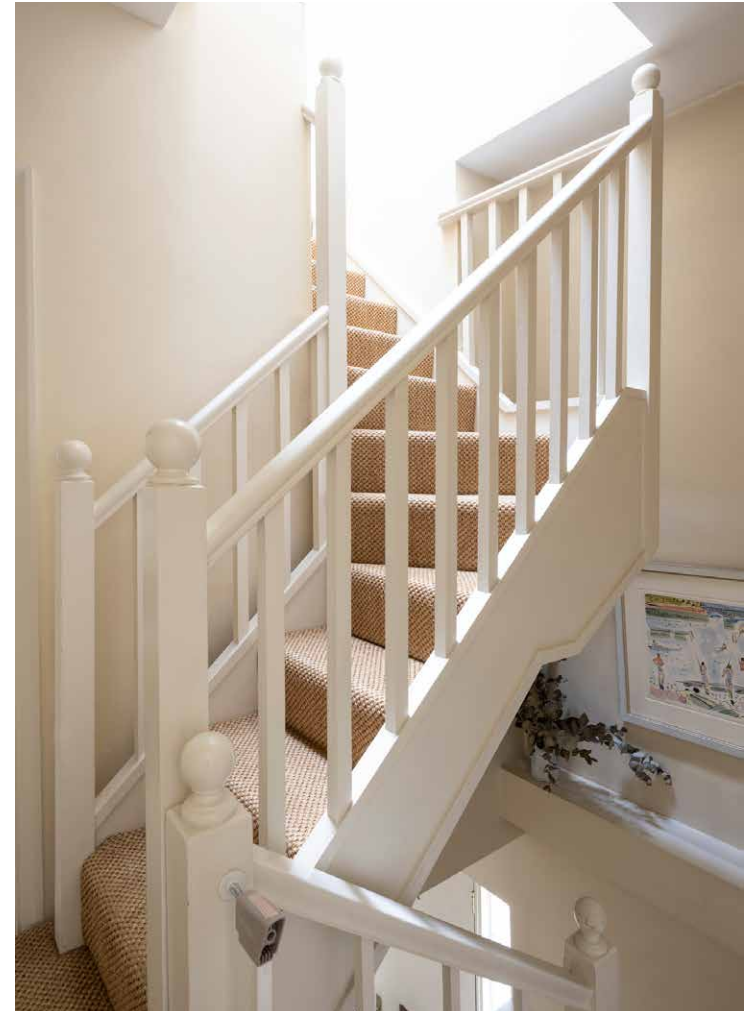
Upstairs, the principal bedroom suite continues the calming theme. Soft sage tones and textured wardrobes echo the room's muted mood, while the en suite bathroom features oversized neutral tiling and a refined walk-in shower. Two further bedrooms – one on the first floor, one tucked into the top – are styled with a similarly soothing hand. Both are served by a navy-tiled family bathroom with a bath and overhead shower.

From the second floor, step out onto a south-facing decked terrace – a rare London luxury that catches the early afternoon sun, perfect for summer lunches.







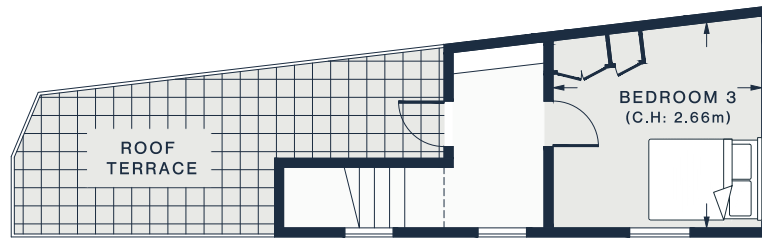




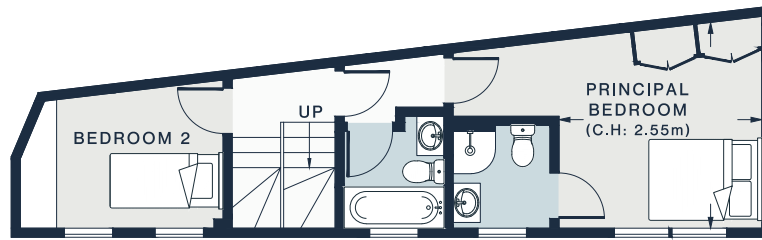
“ From the second floor, step out onto a south-facing decked terrace – a rare London luxury that catches the early afternoon sun, perfect for summer lunches.



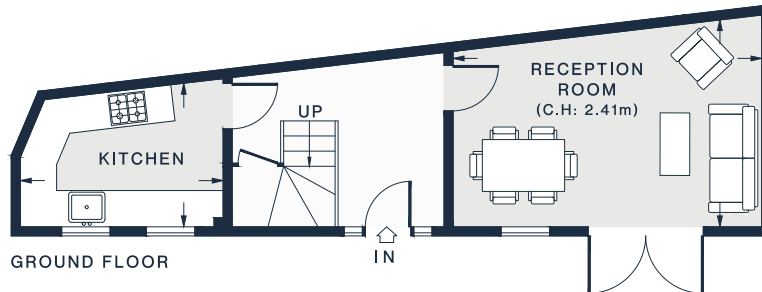




SECOND FLOOR



FIRST FLOOR



GROUND FLOOR

RECEPTION ROOM  
16'10 x 11'6 (5.1m x 3.5m)

KITCHEN  
10'11 x 7'11 (3.3m x 2.4m)

PRINCIPAL  
BEDROOM  
11'6 x 11'0 (3.5m x 3.3m)

BEDROOM 2  
11'1 x 8'0 (3.3m x 2.4m)

BEDROOM 3  
11'4 x 10'4 (3.4m x 3.1m)

Approx. Gross Internal Area = 929 sq ft / 86.30 sq m

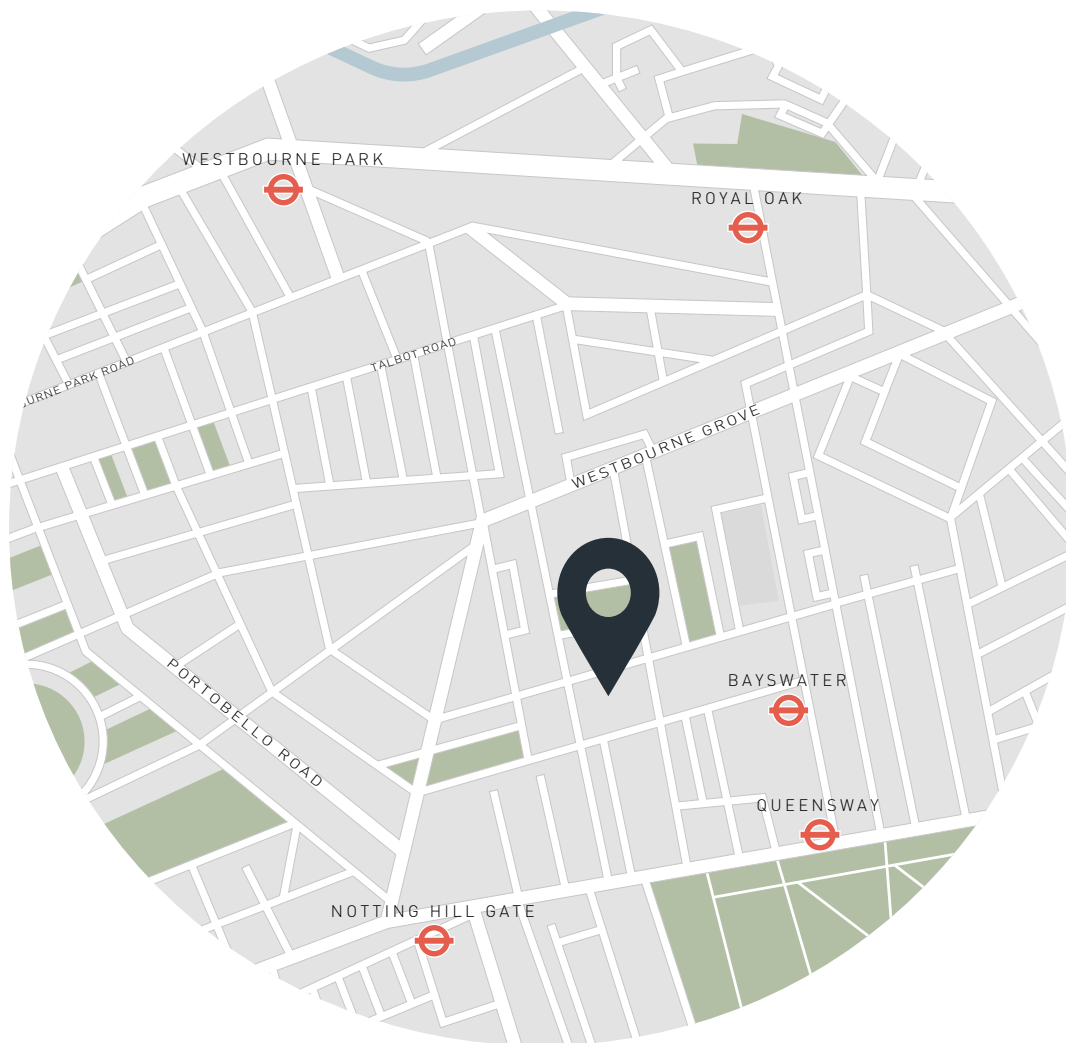
Floor plans are for illustrative purposes only and not to scale. Compliant with RICS code of measuring practice.  
Prepared for Domus Nova. Copyright © All Rights Reserved.

## Property Details

Contemporary kitchen  
Open-plan dining and reception room  
Principal bedroom suite  
Two further bedrooms  
Family bathroom  
Roof terrace  
City of Westminster

Approx. 929 sq ft / 86.3 sq m  
EPC=E  
Tenure: Freehold  
Council Tax Band: G





## Location

Caught between the buzz of Notting Hill and Bayswater, the highly sought-after Princes Mews offers a quiet reprieve from the hustle and bustle of the city. Head to the lawns and gardens of Hyde Park or take a short stroll up to Westbourne Grove to browse boutiques. For relaxation, the Six Senses Spa at the nearby Whiteley's development will be the UK's first. Grab brunch from Granger & Co or head to Aphrodite Taverna for homely Greek-Cypriot bites. Round off the day with dinner at The Park. Queensway station is less than ten minutes' walk from your door, offering easy access into central London.

Bayswater - 6 mins (Circle, District)

Queensway - 8 mins (Central)

Notting Hill Gate - 10 mins (Central, Circle, District)

Specialising in London  
and Ibiza's design-led homes

Let's talk  
020 7221 7817  
sales@domusnova.com  
domusnova.com

The particulars above are a guide, not an offer or contract. Descriptions, photographs and plans are not statements or representations of fact. Measurements are approximate and not to scale. Prospective purchasers must verify the accuracy of the information within the particulars. Domus Nova does not give any representations or warranties; nor represent the Seller legally. Domus Nova has no liability, for any costs, losses or expenses incurred by the Seller or a prospective buyer relating to the sales and buying transaction.

Our Sales Disclaimer, trading names and privacy policy on how your data is processed and used is found in full on our website in our [Privacy Statement](#).

© Domus Nova 2025. All rights reserved.