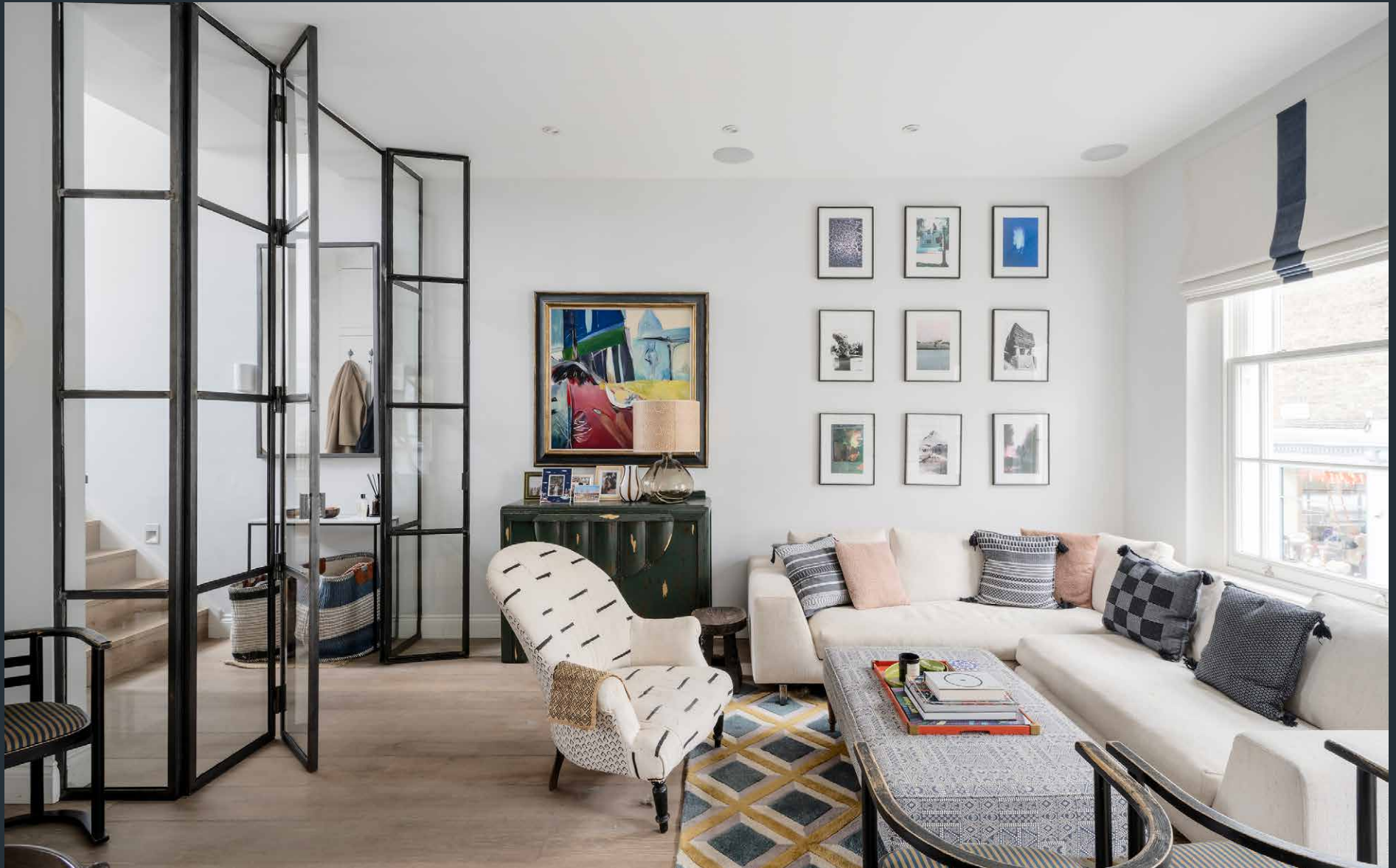


DOMUS NOVA



Powis Terrace W11
£2,650,000



Considered design runs throughout this three-bedroom Notting Hill home, complete with two private terraces.

In the heart of residential Notting Hill, Powis Terrace is a row of charming townhouses with pastel-painted brickwork. Behind its pale-pink exterior, this three-bedroom home feels refreshing in design and atmosphere.

Enter on the first floor, where Crittall-framed glass doors make a bold first impression. Beyond, the open-plan kitchen and reception room is effective with its restrained interiors. Pale walls and wood floors leave a neutral canvas for creative decor, while punchy accents are drawn with a modern fireplace and glass pendant lights that mark the dining area. Natural light pours through the space through dual-aspect fenestration; a pair of sash windows in the living room and a French door in the kitchen. From here, there's direct access to a split-level terrace, which has been crafted with striking harlequin tiling.











The principal bedroom suite occupies the entire third floor. There's a calming feel to its minimalist colour palette, while a row of wardrobes makes for a discreet storage solution. The space is infused with sunlight through full-height glazing which slides open to reveal a private terrace. Next door, the en suite bathroom is vibrant with bluescale hexagonal tiles that wrap around a walk-in shower.

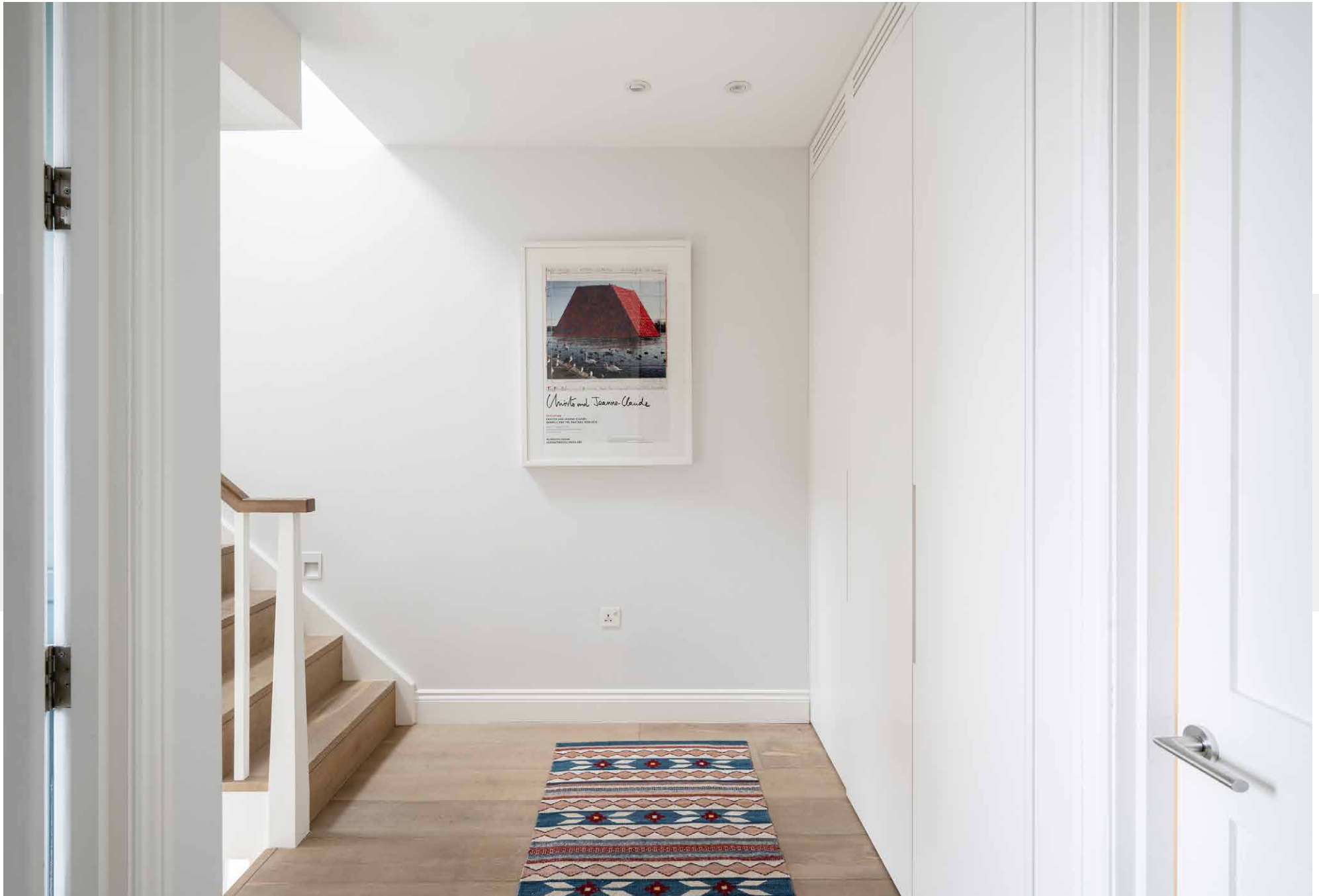
Two guest bedrooms are located on the second floor. One room is complete with an en suite bathroom, a serene setting finished with white metro tiles and bathtub. The other bedroom is served by an additional shower room, sophisticated in tone with oversized marble tiling.

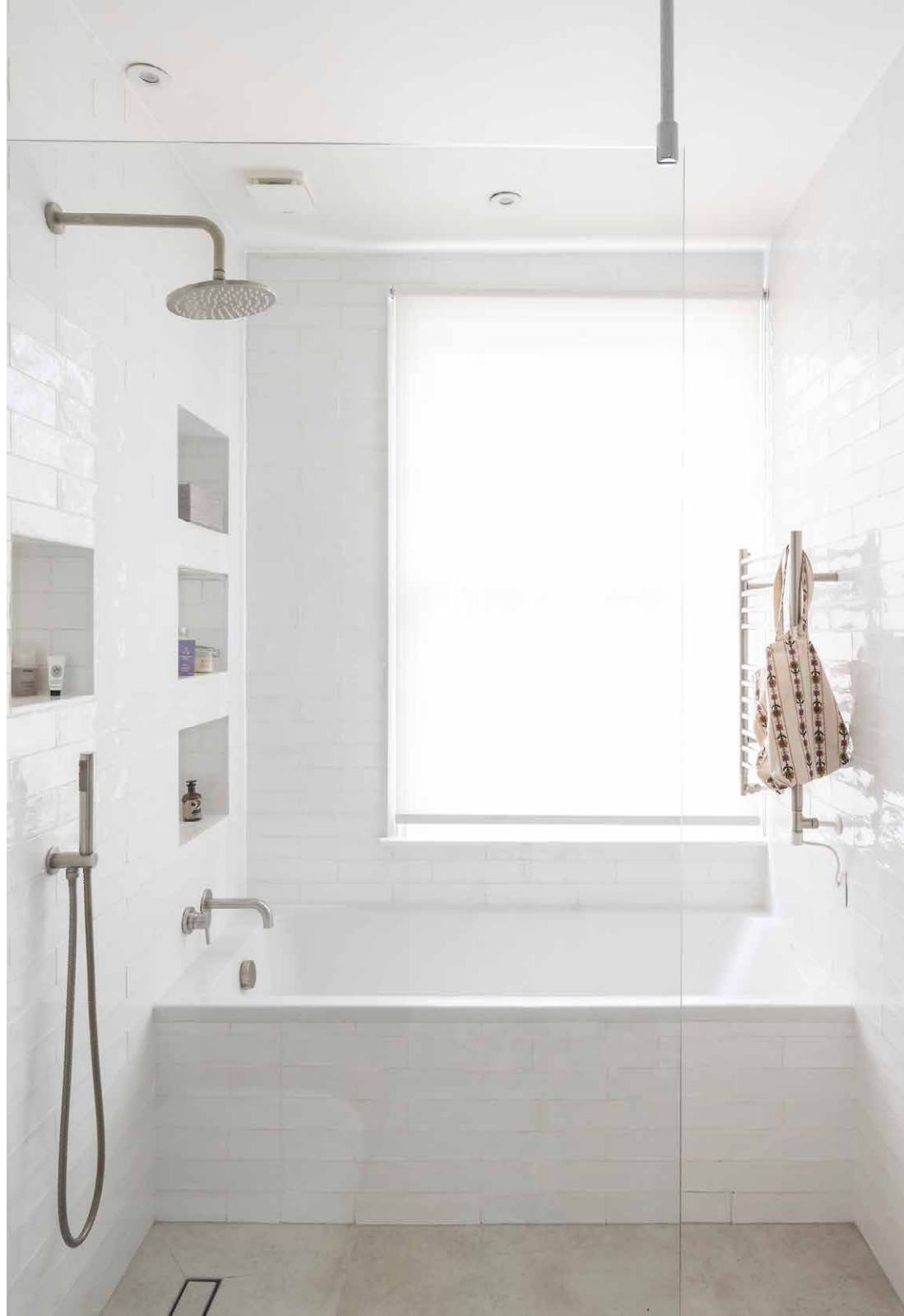










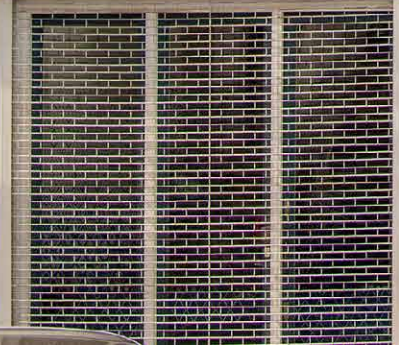






Reany Bondage

020 721 1777



22



24

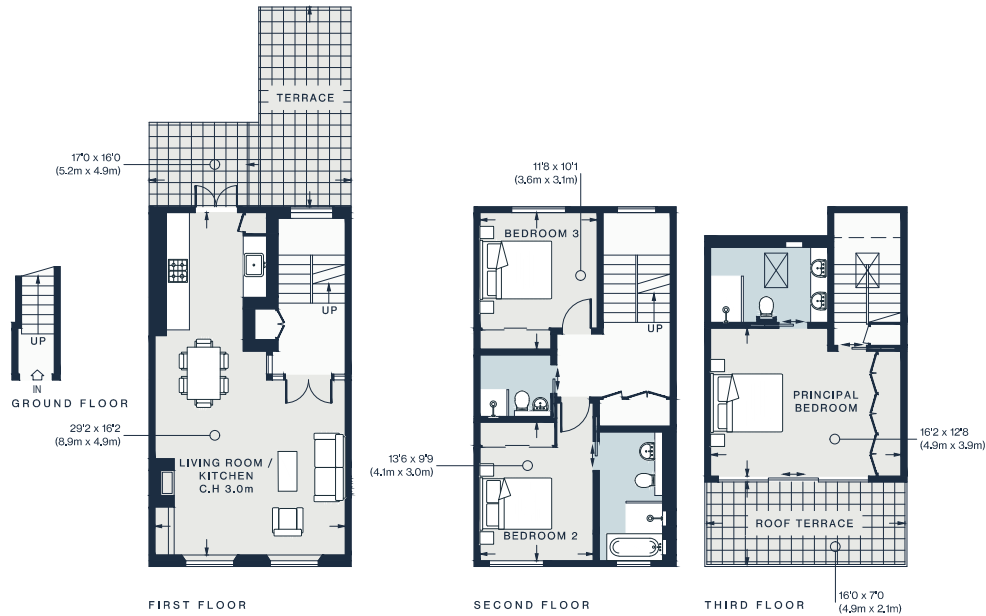


26A



26B





Property Details

- Open-plan kitchen and reception room
- Principal bedroom suite with roof terrace
- Guest bedroom suite
- One additional bedroom
- One additional bathroom
- Private terrace
- Underfloor heating
- Royal Borough of Kensington & Chelsea

Approx. 1,327 sq ft / 123 sq m

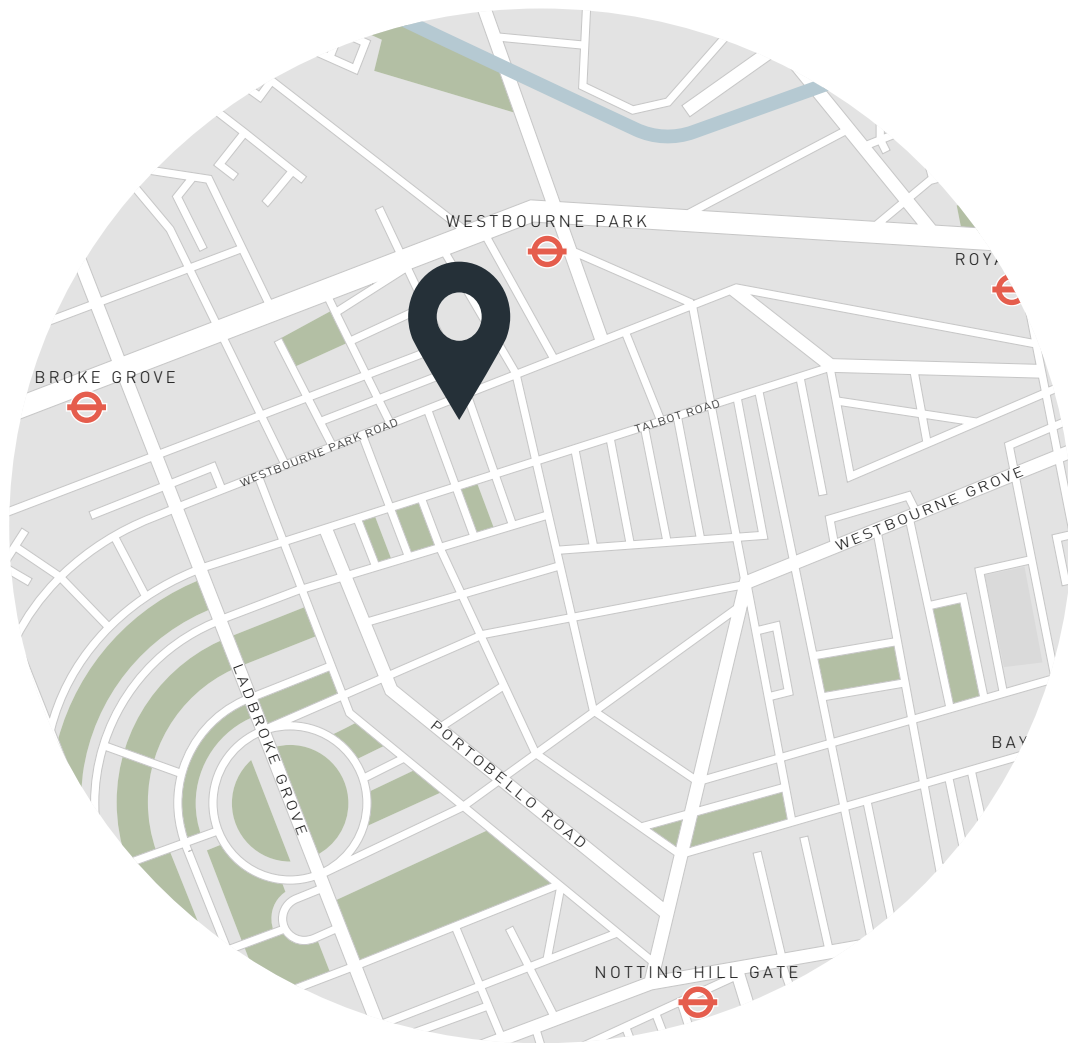
EPC - C

Council tax - E

Share of freehold - circa 992 years

Approx. Gross Internal Area = 1,327 sq ft / 123.3 sq m

Floor plans are for illustrative purposes only and not to scale. Compliant with RICS code of measuring practice.



Location

Surrounded by Portobello, Westbourne Park and Ledbury Road, this quiet residential enclave is poised to enjoy the best of its Notting Hill postcode. Wellness spots like FaceGym and Caudalie Boutique Spa are within easy reach, as are the array of boutiques that line Westbourne Grove. Grocery essentials can be sourced from local favourite Notting Hill Fish and Meat Shop or Sally Clarke's. For gastronomes, some of the neighbourhood's best restaurants are on your doorstep, including The Ledbury, Dorian and Caractère.

Westbourne Park - 5 mins (Circle, Hammersmith & City)

Specialising in London
and Ibiza's design-led homes

Let's talk
020 7221 7817
sales@domusnova.com
domusnova.com

The particulars above are a guide, not an offer or contract. Descriptions, photographs and plans are not statements or representations of fact. Measurements are approximate and not to scale. Prospective purchasers must verify the accuracy of the information within the particulars. Domus Nova does not give any representations or warranties, nor represent the Seller legally. Domus Nova has no liability, for any costs, losses or expenses incurred by the Seller or a prospective buyer relating to the sales and buying transaction.

Our Sales Disclaimer, trading names and privacy policy on how your data is processed and used is found in full on our website in our [Privacy Statement](#).

© Domus Nova 2023. All rights reserved.