

DOMUS NOVA

Powis Square

Notting Hill W11

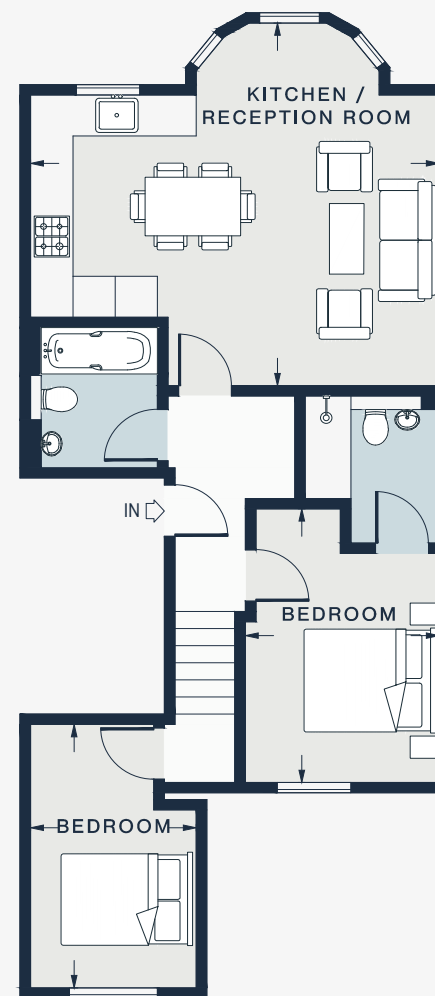
APPROXIMATE GROSS INTERNAL AREA

631 sq ft / 58.6 sq m

020 7727 1717

domusnova.com

LONDON | IBIZA



FIRST FLOOR

KITCHEN / RECEPTION ROOM

18'7 x 17'4 (5.7m x 5.3m)

BEDROOM

13'1 x 9'0 (4.0m x 2.7m)

BEDROOM

12'8 x 7'8 (3.9m x 2.3m)

Approx. Gross Internal Area = 631 sq ft / 58.6 sq m

Floor plans are for illustrative purposes only and not to scale. Compliant with RICS code of measuring practice. Furniture layouts are indicative only. This property may be furnished, part-furnished or unfurnished. Please refer to your agent for details.