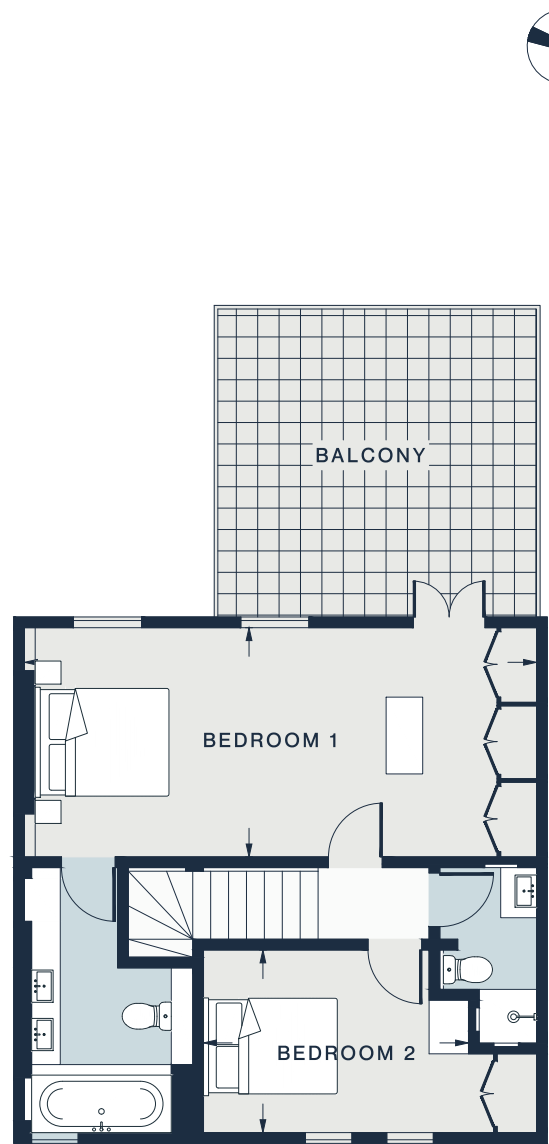


FIRST FLOOR



SECOND FLOOR

RECEPTION ROOM
23'5 x 23'1 (7.1m x 7.0m)

TERRACE
23'6 x 14'8 (7.2m x 4.5m)

BEDROOM 2
12'2 x 8'5 (3.7m x 2.6m)

KITCHEN
16'6 x 13'5 (5.0m x 4.1m)

BEDROOM 1
23'4 x 10'5 (7.1m x 3.2m)

BALCONY
14'10 x 14'3 (4.5m x 4.4m)

Approx. Gross Internal Area = 1287 sq ft / 120 sq m

Floor plans are for illustrative purposes only and not to scale. Compliant with RICS code of measuring practice.