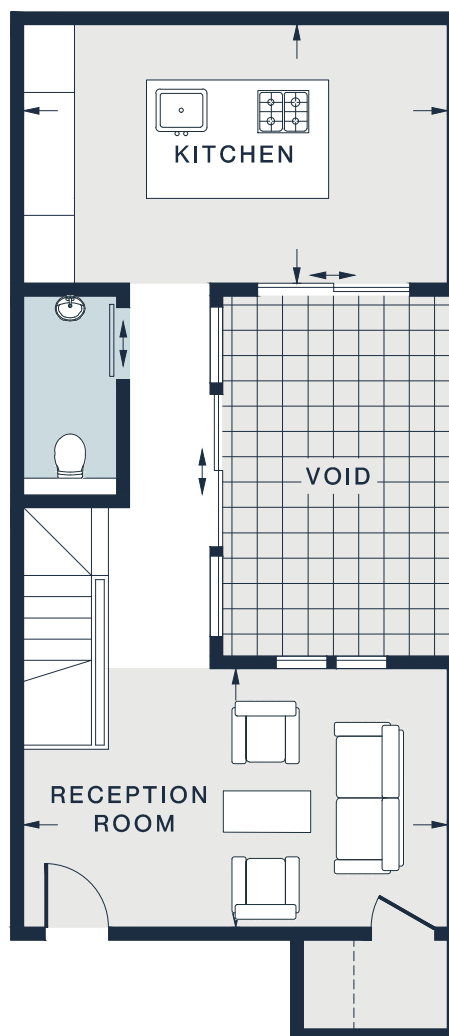


LOWER GROUND FLOOR



GROUND FLOOR

<b>BEDROOM</b>
11'8 x 9'8 (3.6m x 2.9m)
<hr/>
<b>BEDROOM</b>
13'11 x 10'4 (4.2m x 3.1m)
<hr/>

<b>RECEPTION</b>
16'2 x 10'1 (4.9m x 3.1m)
<hr/>
<b>KITCHEN</b>
16'5 x 11'2 (5.0m x 3.1m)
<hr/>

Approx. Gross Internal Area = 960 sq ft / 89.2 sq m

---

Floor plans are for illustrative purposes only and not to scale. Compliant with RICS code of measuring practice.