

# DOMUS NOVA



Portobello Road W10  
£1,500 p/w - Long Let



Residing over a corner of vibrant Portobello Road, an eye-catching colour palette brightens this stylish two-bedroom maisonette for rent.

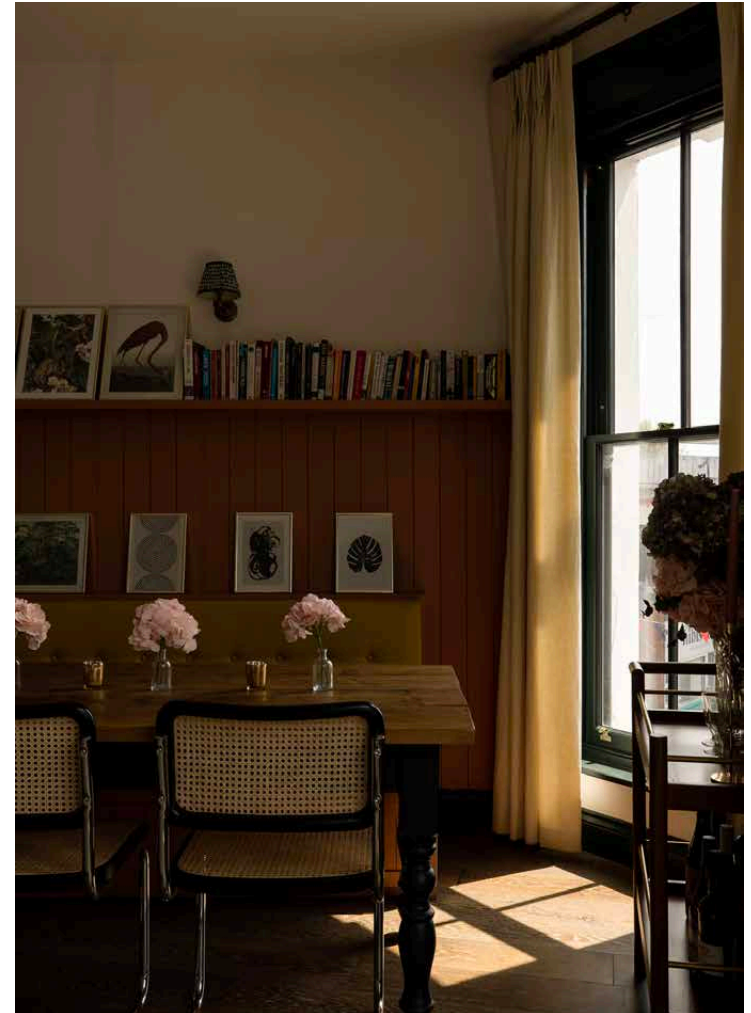
Positioned towards the quieter end of Portobello Road, this corner plot maisonette makes a bold first impression. Past its traditional Victorian exterior, interludes of colour create an engaging space for city living.

Ascend to an open-plan living room, where white walls provide the canvas for a spectrum of shades that dance across the space. The kitchen commands immediate attention – its forest green cabinetry contrasted by terracotta-toned tiles. Gently lit by rattan pendant lights, a stone-topped island offers additional storage and seating.

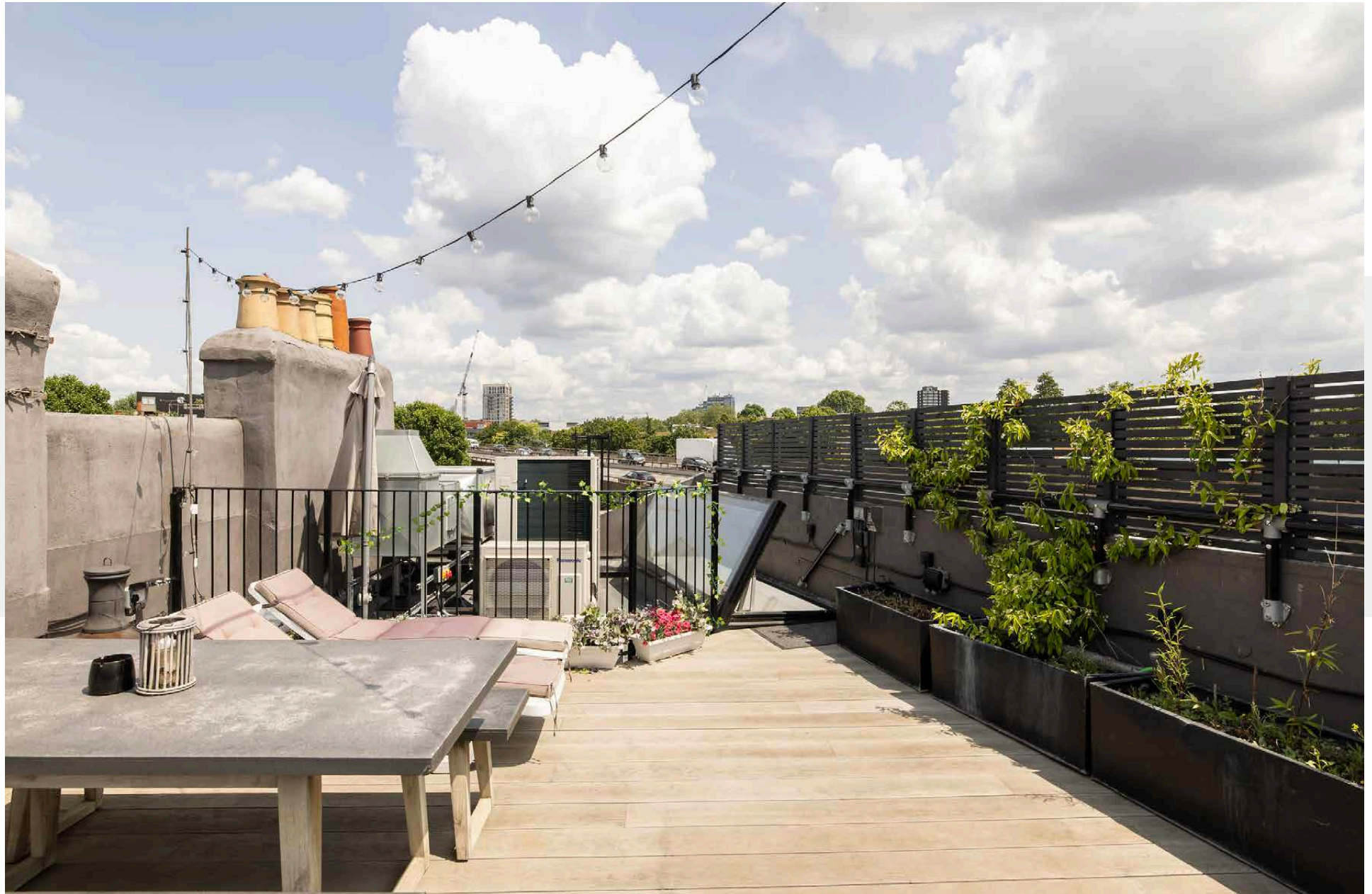
Finished with a dark green trim, two large sash windows cast light across the dining and reception space. Form meets function with cushioned banquette seating, the wall panelling behind echoing the tones of the kitchen tiles. Overhead, shelving provides additional space for storage or showcasing artwork. Defining the reception space, yellow tiling draws focus to a white-painted feature fireplace. Leading from the entrance, a small, brightly lit study.

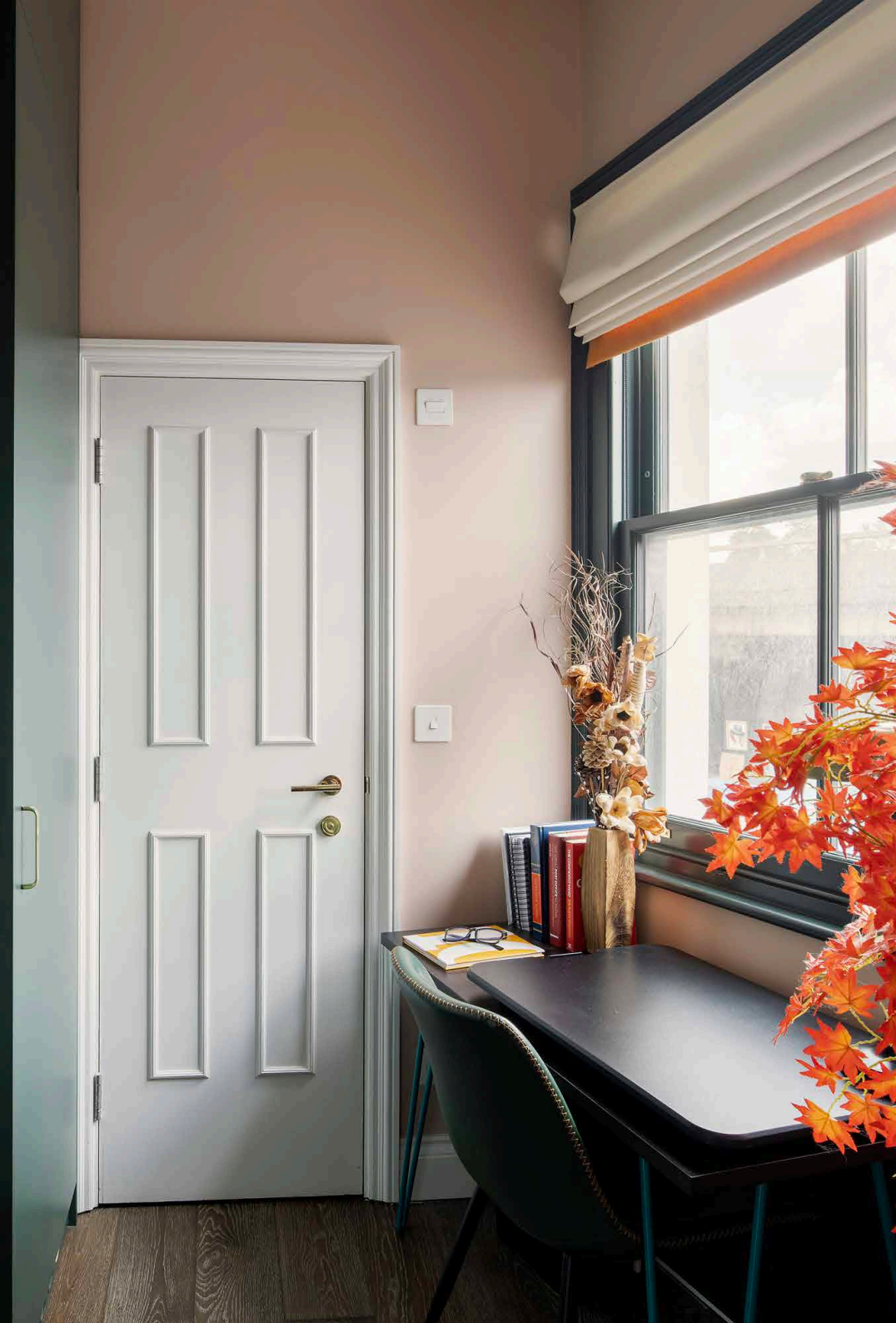
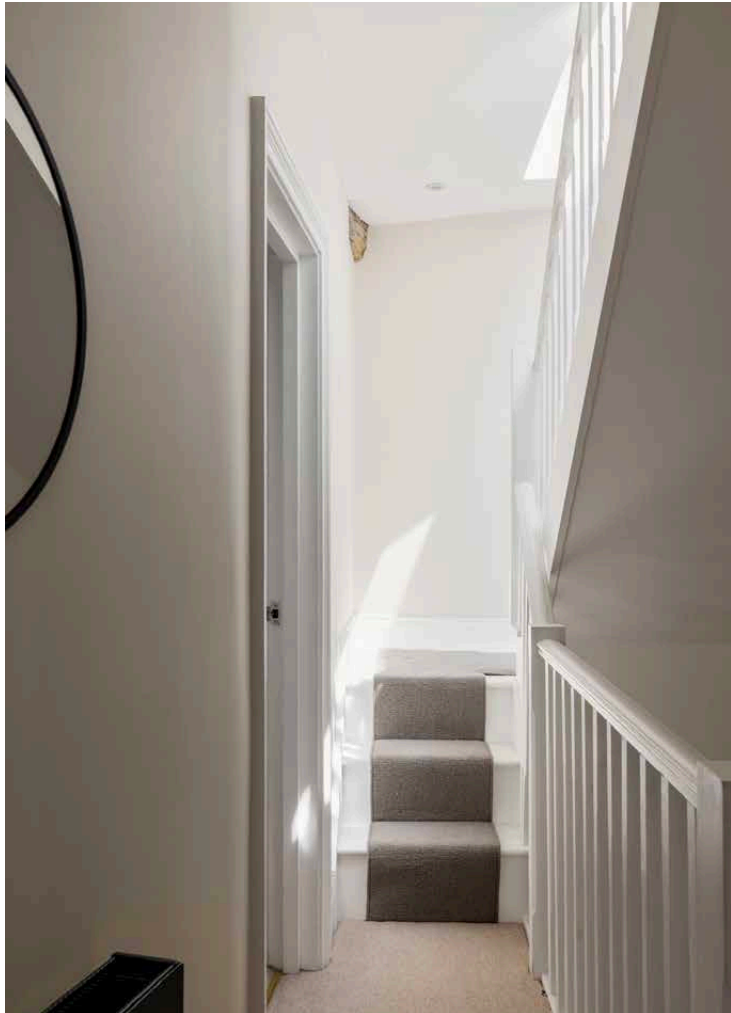














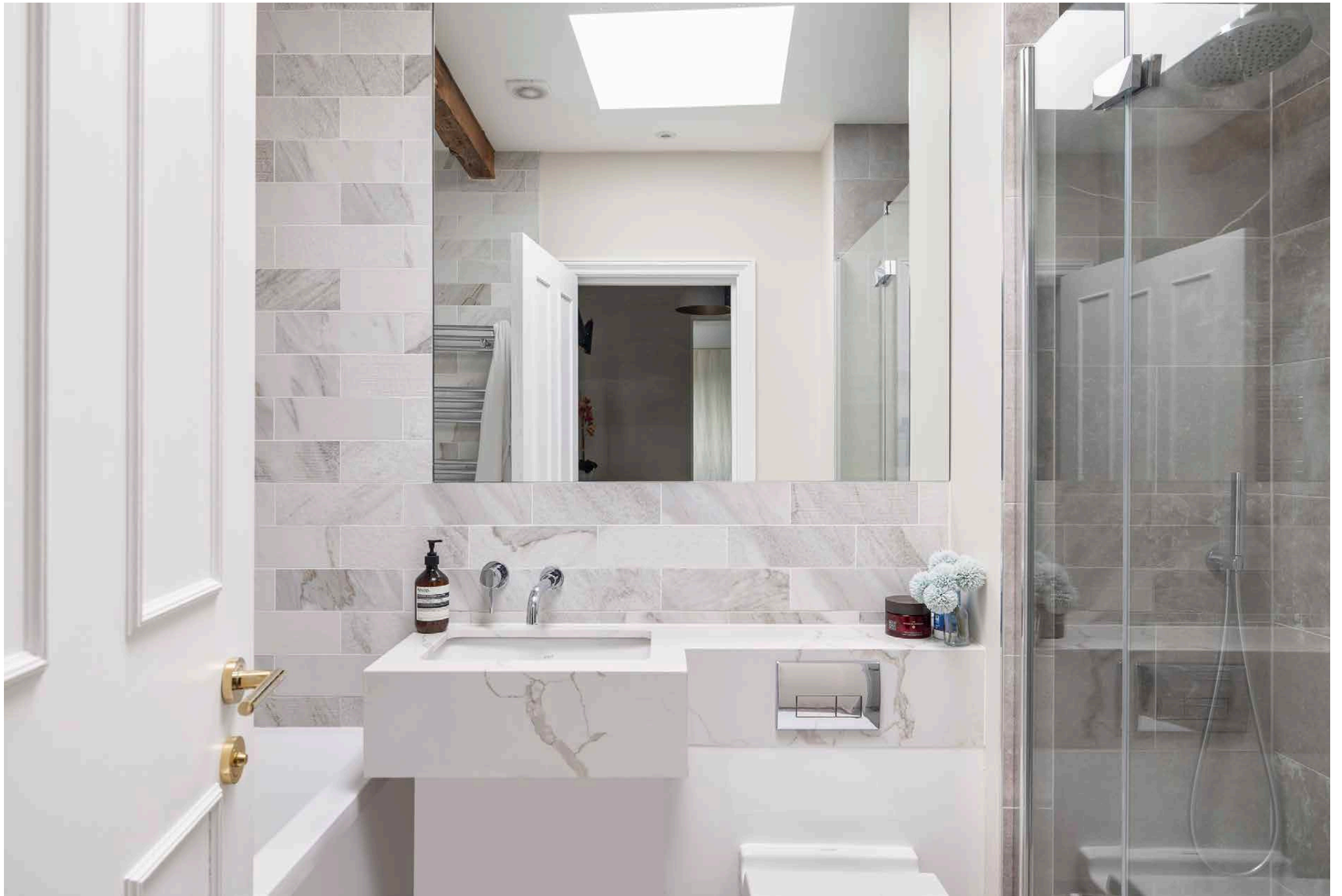
Across the second floor, a neutral palette sets the scene for creative styling in the principal bedroom suite. Cream carpet underfoot and an exposed wood beam overhead lend a soft ambience, while deep-toned windows and a matching column radiator add depth. To the rear of the space, a doorway leads through to a dressing area fitted with integrated wardrobes. Slate-coloured tiles juxtapose white walls in the en suite bathroom, complete with a walk-in shower.

Navy blue tones take over the guest bedroom suite, a painted brick feature wall offering a quiet contrast. A walk-in wardrobe leads the way to a marble-tiled en suite bathroom, containing a spacious rainfall shower and bathtub.

An enviable feature for London's warmer seasons, a spacious roof terrace awaits at the top of the home.









## Property Details

- Open-plan kitchen and reception room
- Principal bedroom suite
- Guest bedroom suite
- Study
- Roof terrace
- Royal Borough of Kensington & Chelsea

Approx 1,291 sq ft / 120 sq m  
 EPC=D  
 Council Tax Band: E

RECEPTION / DINING  
 16'2 x 13'8 (4.9m x 4.2m)

KITCHEN  
 15'3 x 13'6 (4.6m x 4.1m)

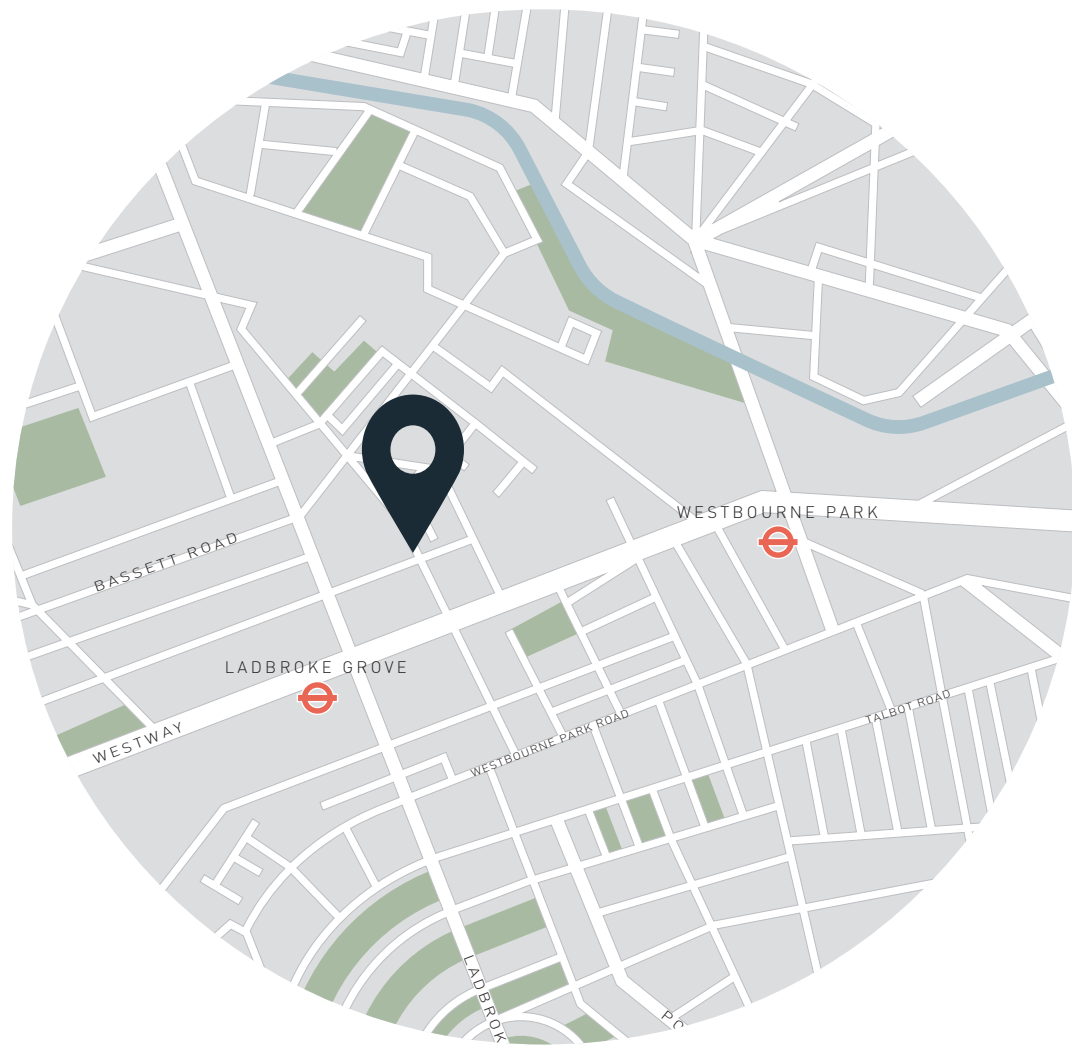
ROOF TERRACE  
 19'2 x 16'4 (5.8m x 5.0m)

BEDROOM 1  
 17'9 x 12'8 (5.4m x 3.8m)

BEDROOM 2  
 12'2 x 12'2 (3.7m x 2.7m)

Approx. Gross Internal Area = 1291 sq ft / 120.0 sq m

Floor plans are for illustrative purposes only and not to scale. Compliant with RICS code of measuring practice.



## Location

Portobello Road sits at the centre of the action, with its wealth of vintage stores and exceptional eateries. Start your day with a fresh juice or smoothie from Portobello Juice Café, then wander down past the character-filled coffee shops and stalls. Stop by Ukai for sushi, grab your afternoon literature from the Notting Hill Bookshop, then kick back in Holland Park. Come evening, renowned restaurants are just a stone's throw away. Try Michelin-starred Core by Clare Smyth or local favourite Gold.

Ladbroke Grove (4 mins)  
Notting Hill Gate (17 mins)

Specialising in London  
and Ibiza's design-led homes

Let's talk

020 7727 1717

lettings@domusnova.com

domusnova.com

The property particulars are a guide not statements. Descriptions, photographs, and plans are for guidance and should be checked by the prospective tenant. The Property is offered "subject to contract and references". No warranties, representations, or Tenancy is given by Domus Nova. Expenses incurred by a prospective tenant will not be reimbursed if the Landlord withdraws prior to the Tenancy Agreement being signed, dated and exchanged and cleared funds received. Furniture and other items shown in a property at viewing may belong to a current tenant. The prospective tenant should verify in writing which fixtures and fittings forms part of the Tenancy. Our full lettings disclaimer together with trading names and our [Privacy Policy](#) is shown on our website

© Domus Nova 2024. All rights reserved.