

DOMUS NOVA

Portobello Road

Notting Hill W11

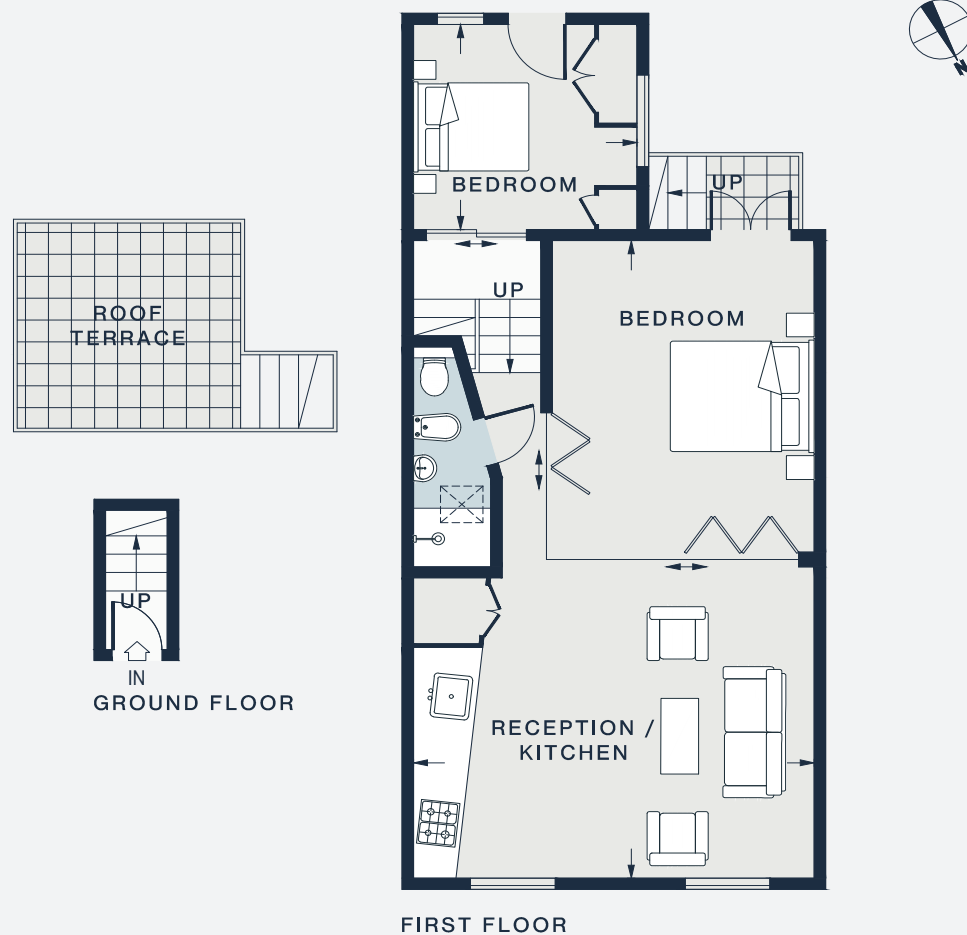
APPROXIMATE GROSS INTERNAL AREA

590 sq ft / 55 sq m

020 7727 1717

domusnova.com

LONDON | IBIZA



RECEPTION / KITCHEN / BEDROOM

28'6 x 17'0 (8.7m x 5.2m)

BEDROOM

9'6 x 9'4 (2.9m x 2.8m)

Approx. Gross Internal Area = 590 sq ft / 55 sq m

Floor plans are for illustrative purposes only and not to scale. Compliant with RICS code of measuring practice. Furniture layouts are indicative only. This property may be furnished, part-furnished or unfurnished. Please refer to your agent for details.