

# DOMUS NOVA



Pindock Mews W9  
£2,795 p/w - Short let



A traditional mews home with a twist. Layers of glass channel light throughout this two-bedroom property for rent, rebuilt entirely to feature daring architectural interventions.

Bold black accents give a 21st century facelift to Pindock Mews' brickwork façade. Recently refurbished, be the first to step foot into this two-bedroom home set on one of Little Venice's most picturesque cobbled streets.

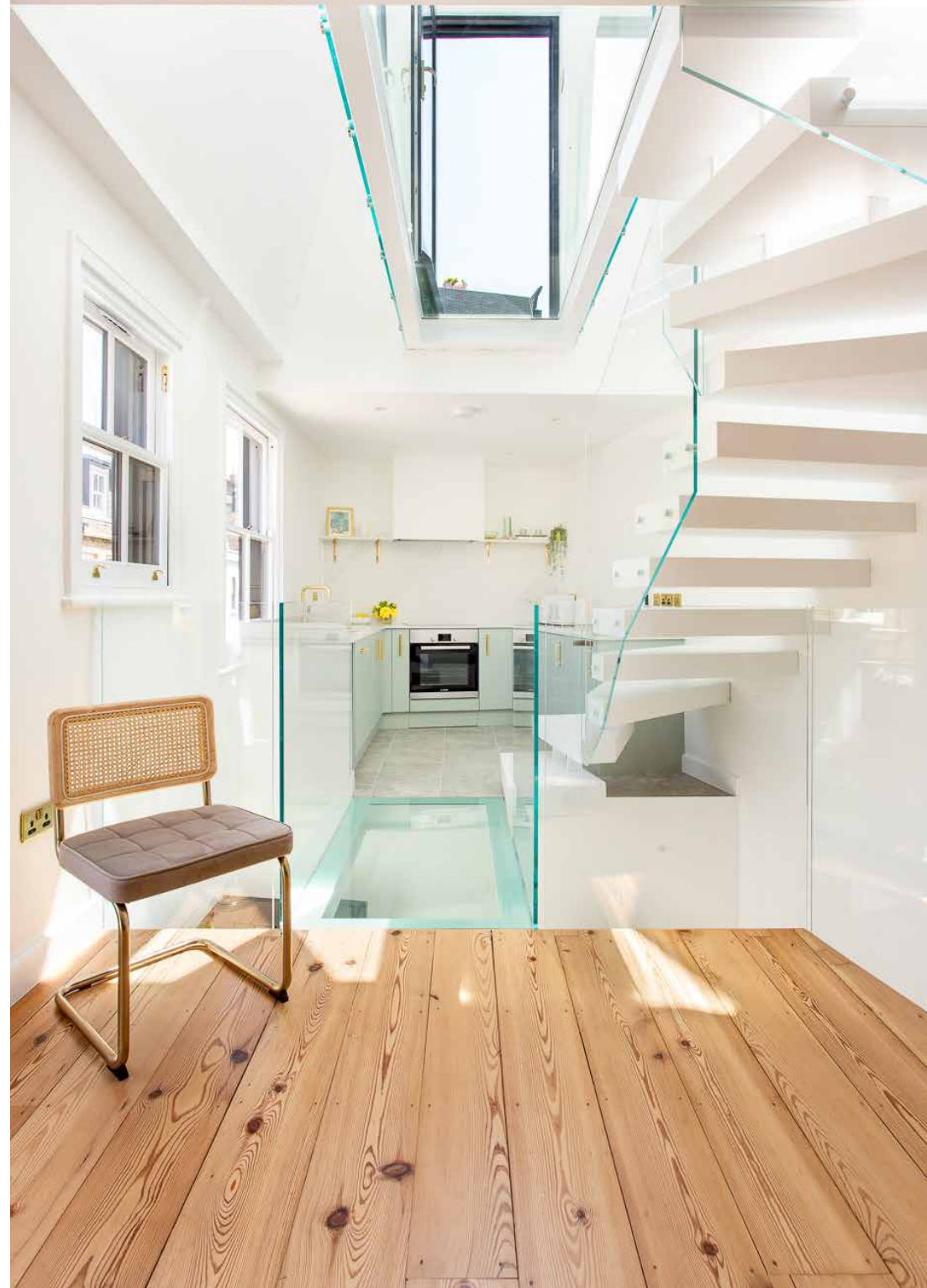
Floating staircases and glass floor panels unite all three floors, offering an uninterrupted sightline through the property up to the sky. Configured to maximise the space and natural light available, bedrooms are found on the ground and second floors, with a sociable reception room and kitchen positioned in-between.

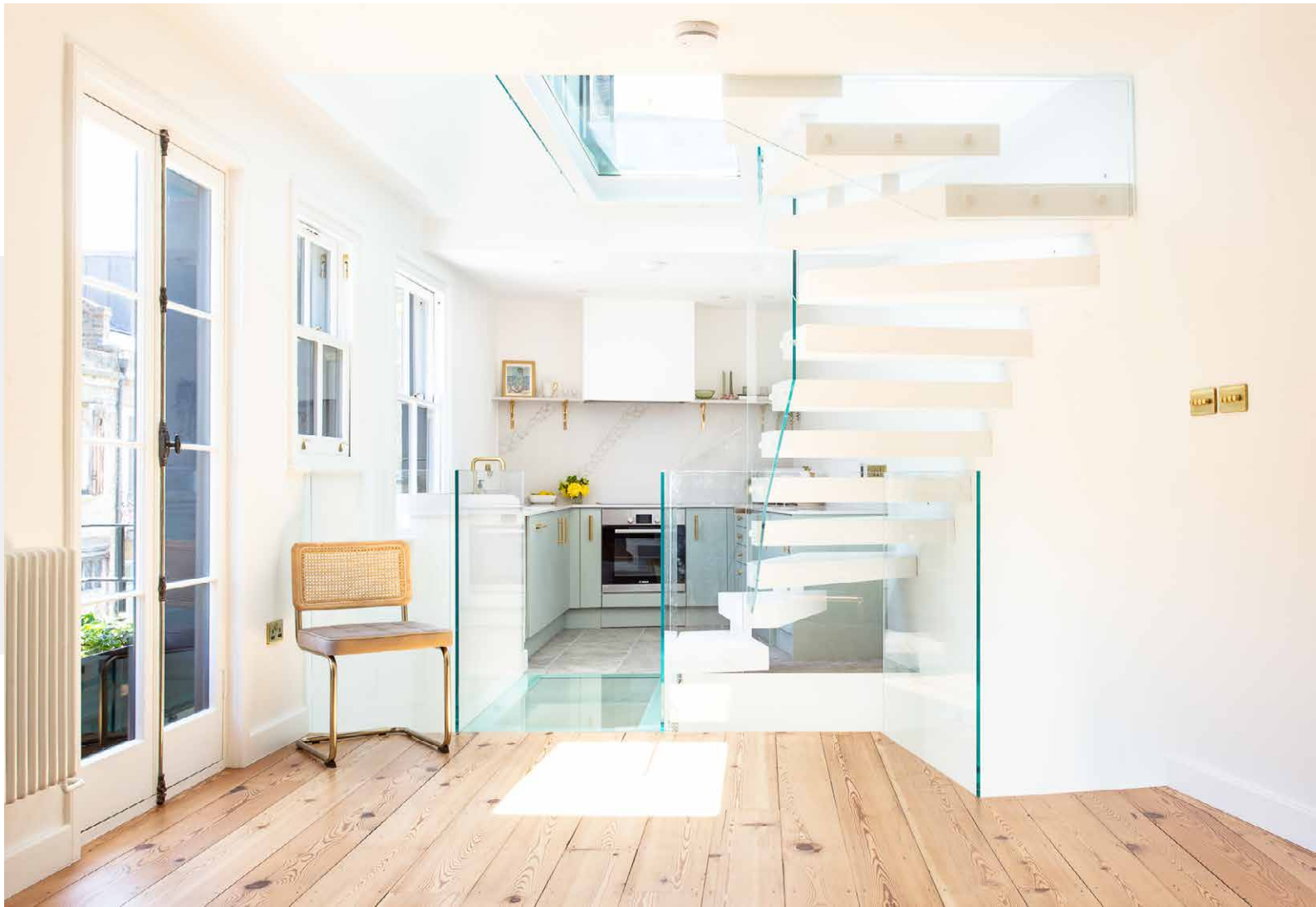




A striking glass walkway delineates this main living space. On one side, a seating area is arranged around an open fireplace together with a blue marble bar that adds an opulent touch.

Two sets of double doors open onto Juliet-style balconies that keep the room bright and airy. White walls flow through into the kitchen, where marble surfaces elevate the streamlined units. Integrated appliances and a considered layout make this a culinary domain fit for all cooks.





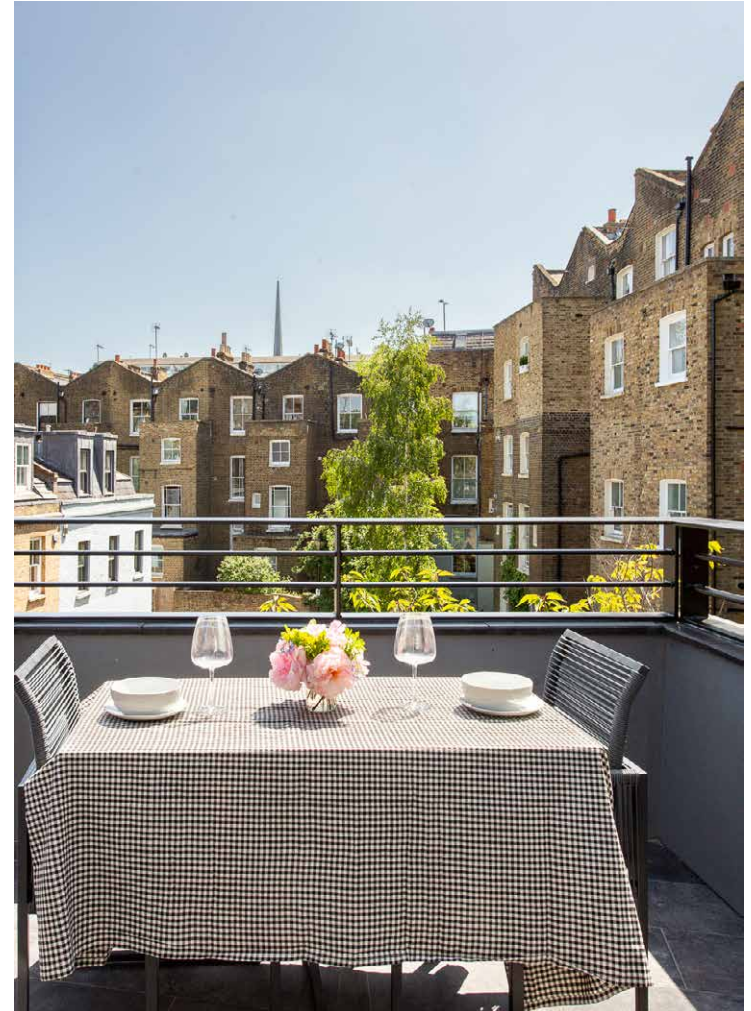


Located on their own floors, both bedrooms enjoy a sense of privacy. Tucked away at the top of the house, the principal suite is finished in soft, blush tones that are echoed in the pink marble en suite, complete with walk-in shower. Integrated storage keeps the space clutter free. From here, cross the glass-floored landing out to the roof terrace. Note the table for al fresco meals.

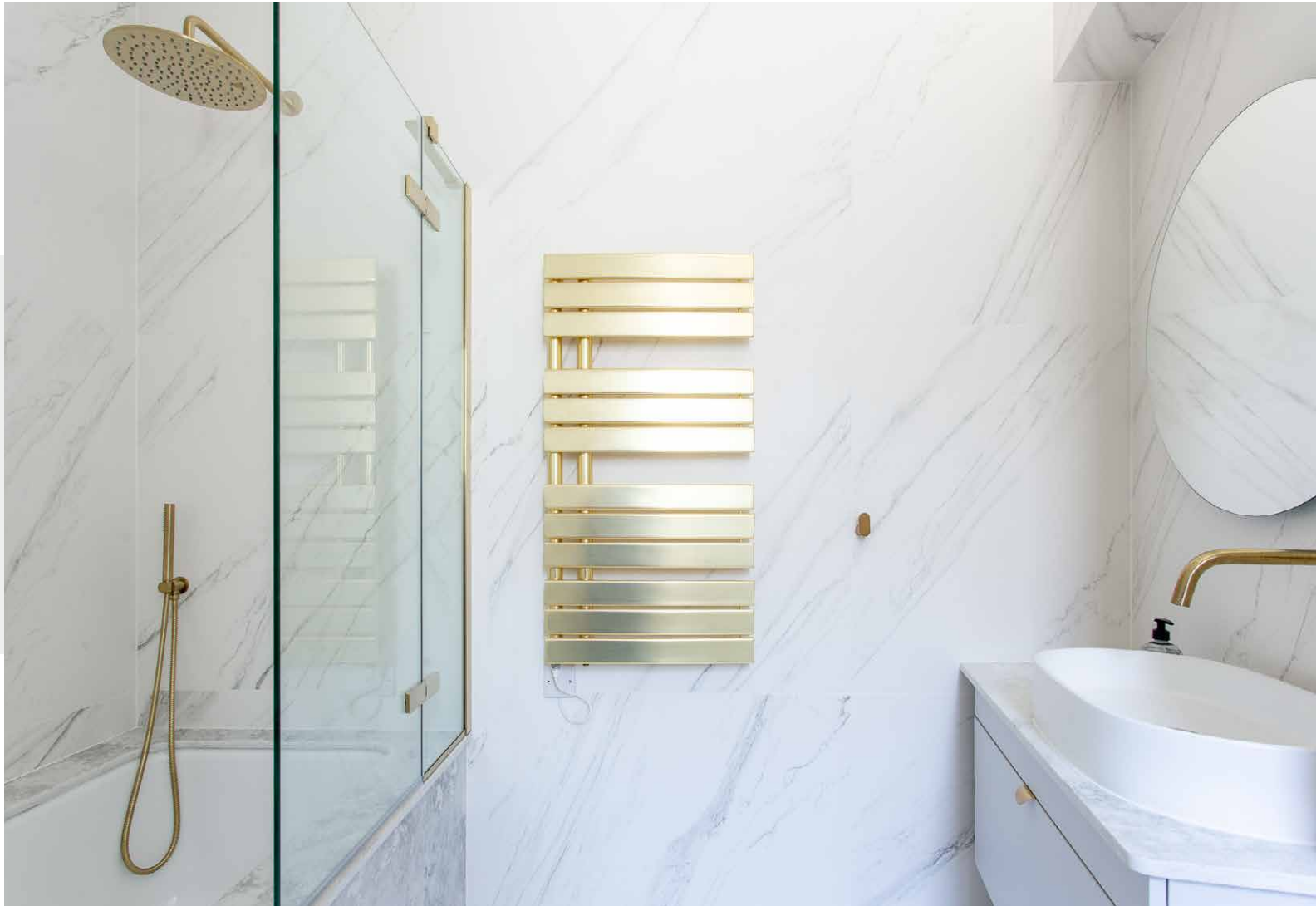
With its decadent black and gold palette, the guest bedroom has an Art Deco feel. Clerestory windows diffuse the light, making the space conducive to rest and relaxation. Also on this floor, a family bathroom is wrapped in marble and features a rainfall shower over a bathtub.



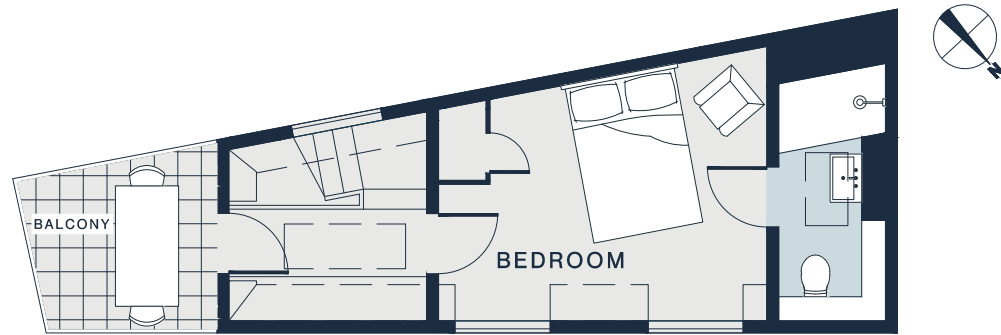




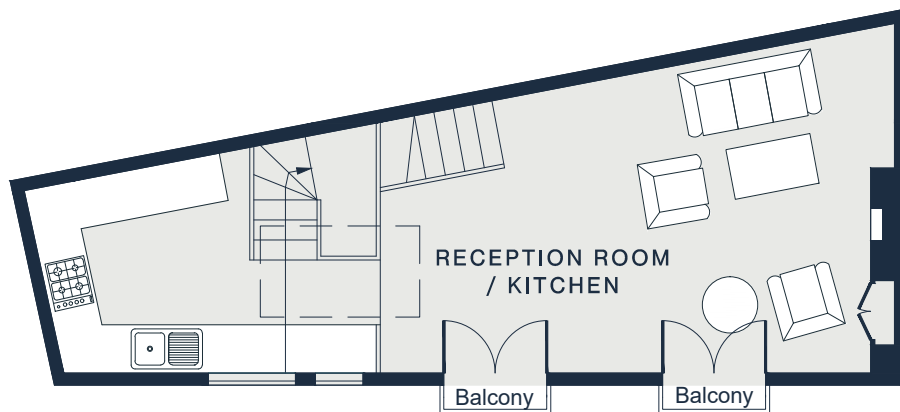




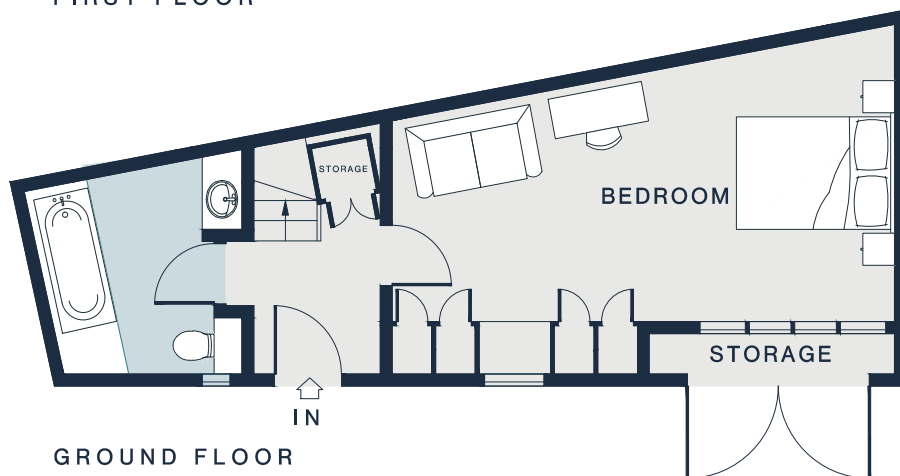




SECOND FLOOR



FIRST FLOOR



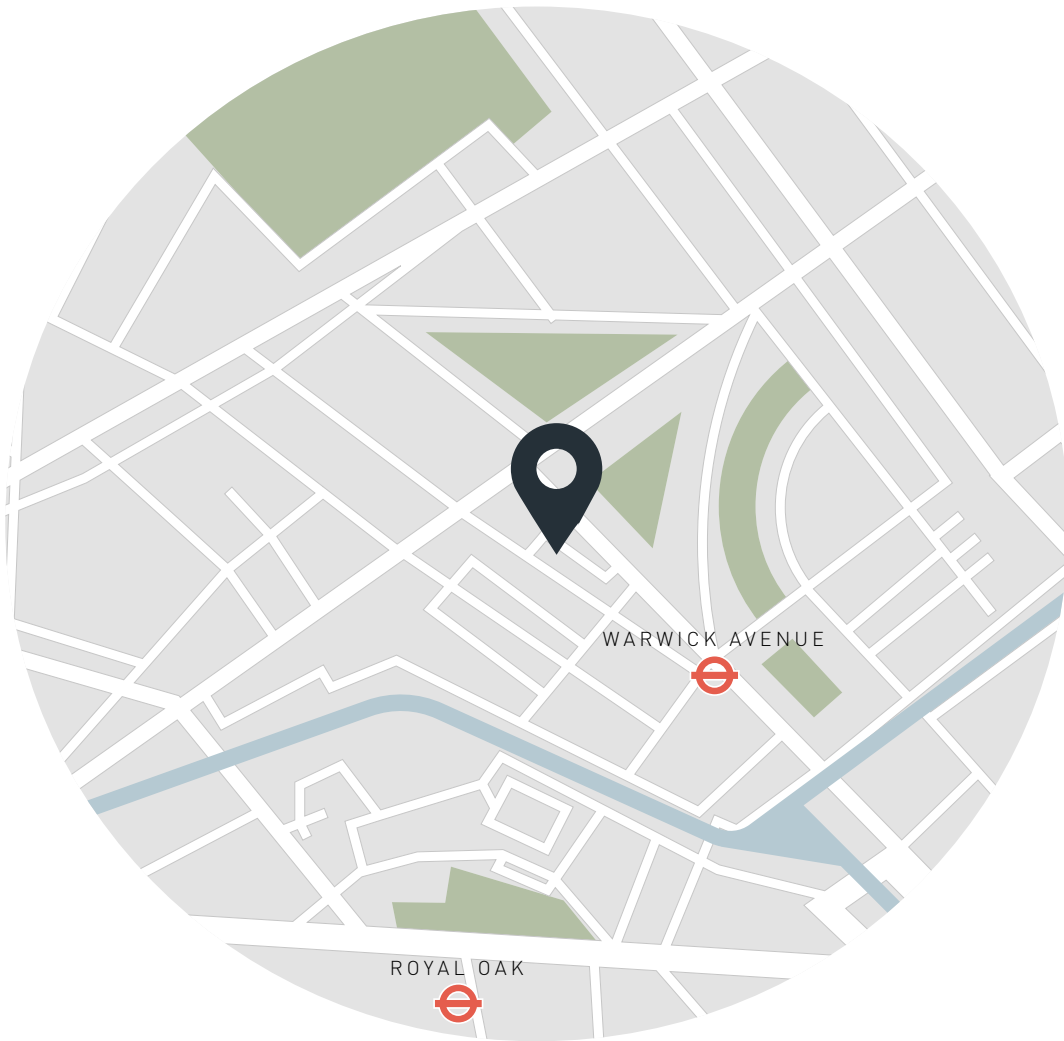
GROUND FLOOR

Approx. Gross Internal Area = 1,100 sq ft / 102.2 sq m

## Property Details

- Contemporary kitchen and reception room
- Striking glass ceilings
- Principal bedroom suite
- Guest bedroom
- Family bathroom
- Roof terrace
- City of Westminster

- Approx 1,100 sq ft/ 102.2 sq m
- Council Tax Band - E
- EPC - D
- Deposit Payable - £11,980



## Location

A prime spot in the most romantic part of London, there's a film set feel to this beautiful cobbled mews in the heart of Little Venice. On your doorstep – the canal, the antiques and boutiques of Formosa Street, and Warwick Avenue. Start the day with breakfast at The Waterway, or grab leisurely brunch at The Summerhouse, both situated on the canal. Spend the afternoon in picturesque Rembrandt Gardens. Come evening, enjoy wine tasting and French cuisine at local favourite Paulette or a drink at The Prince Alfred

Nearest tube:

Warwick Avenue - 4 mins

Royal Oak - 13 mins

Specialising in London  
and Ibiza's design-led homes

Let's talk  
020 7727 1717  
lettings@domusnova.com  
domusnova.com

The property particulars are a guide not statements. Descriptions, photographs, and plans are for guidance and should be checked by the prospective tenant. The Property is offered "subject to contract and references". No warranties, representations, or Tenancy is given by Domus Nova. Expenses incurred by a prospective tenant will not be reimbursed if the Landlord withdraws prior to the Tenancy Agreement being signed, dated and exchanged and cleared funds received. Furniture and other items shown in a property at viewing may belong to a current tenant. The prospective tenant should verify in writing which fixtures and fittings forms part of the Tenancy. Our full lettings disclaimer together with trading names and our [Privacy Policy](#) is shown on our website