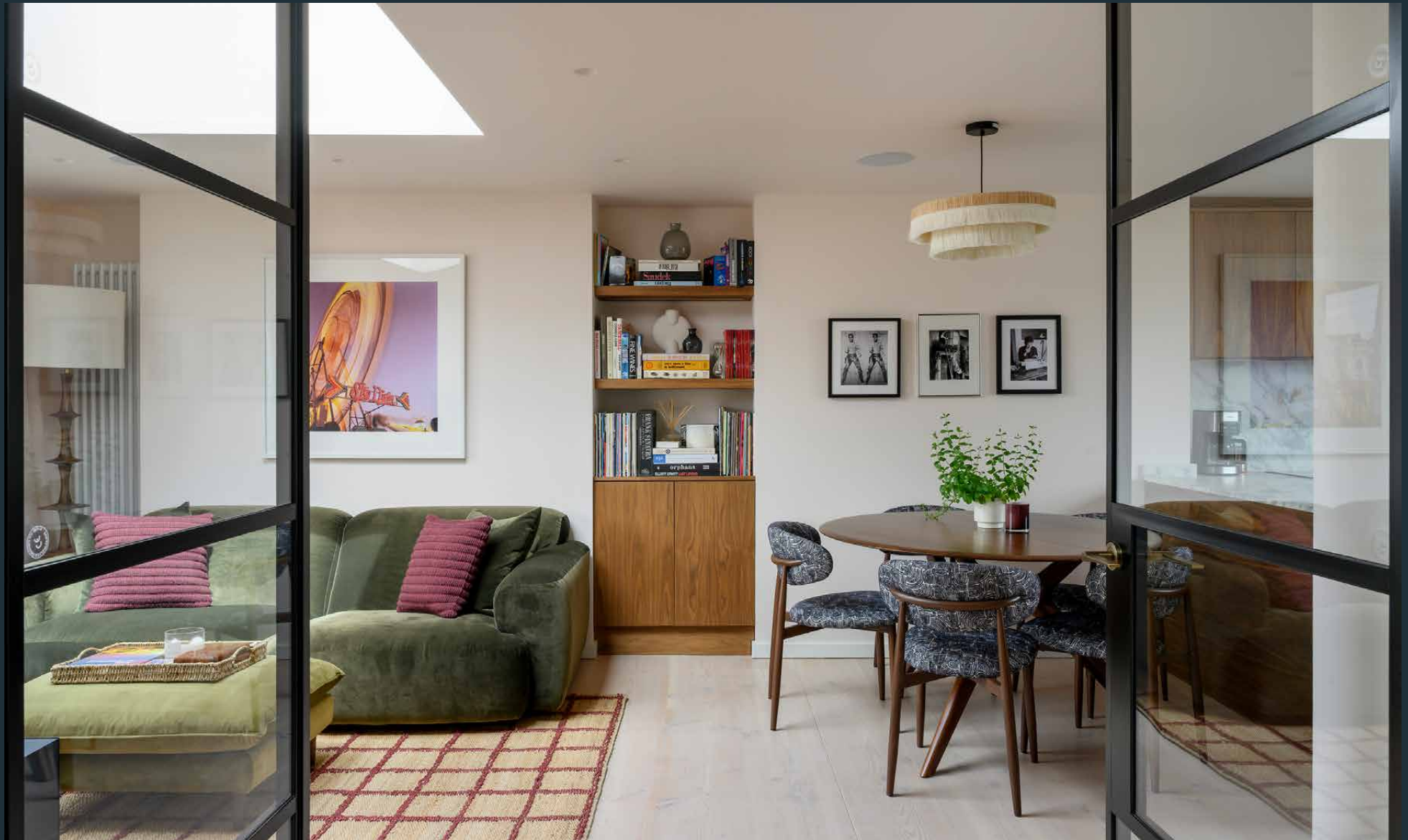


# DOMUS NOVA



Pembridge Villas W11 – £1,795,000

In partnership with **BARNES**  
INTERNATIONAL REALTY



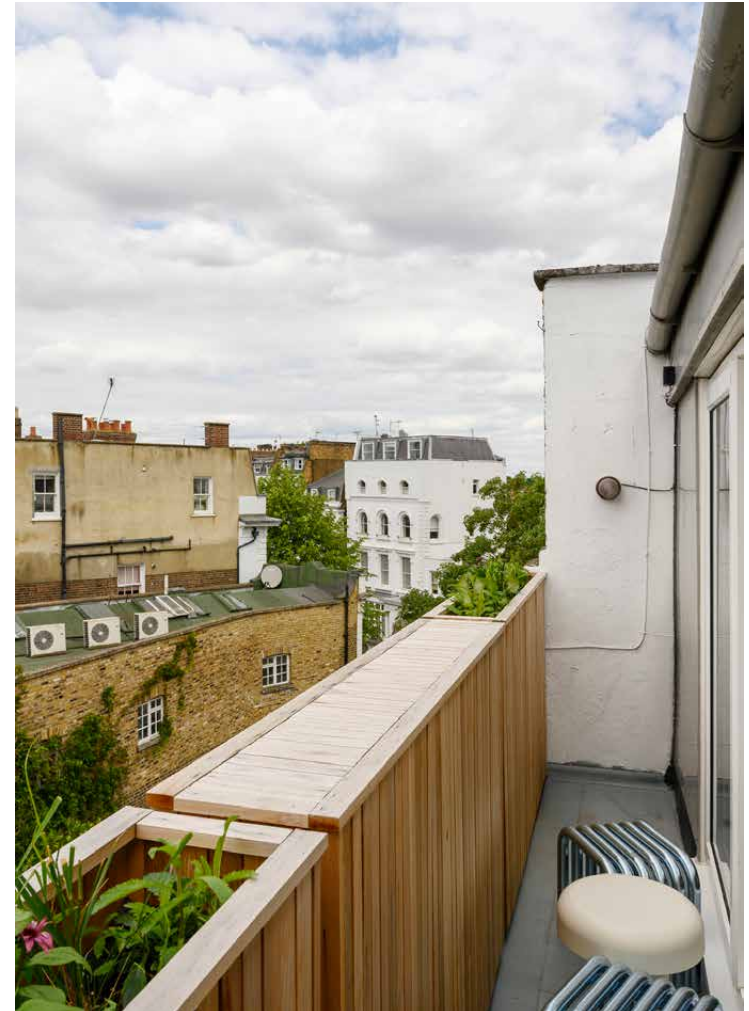
Recently refurbished and thoughtfully reimagined by Studio Fox, this home on Pembridge Villas pairs a prime Notting Hill setting with a calm, carefully considered aesthetic.

Beyond a skylit entrance, double Crittall doors lead into an open-plan kitchen, dining and reception room, where natural materials and generous light define the space. Walnut cabinetry and Arabescato marble worktops shape the kitchen, which is fitted with integrated Neff appliances and a Quooker tap. A large window frames leafy garden views below.

Positioned between the dining and reception areas, a bespoke bar with a CDA wine cooler encourages entertaining. Overhead, a skylight draws daylight deep into the living area, while sliding doors open onto a full-width balcony lined with Siberian larch planters.



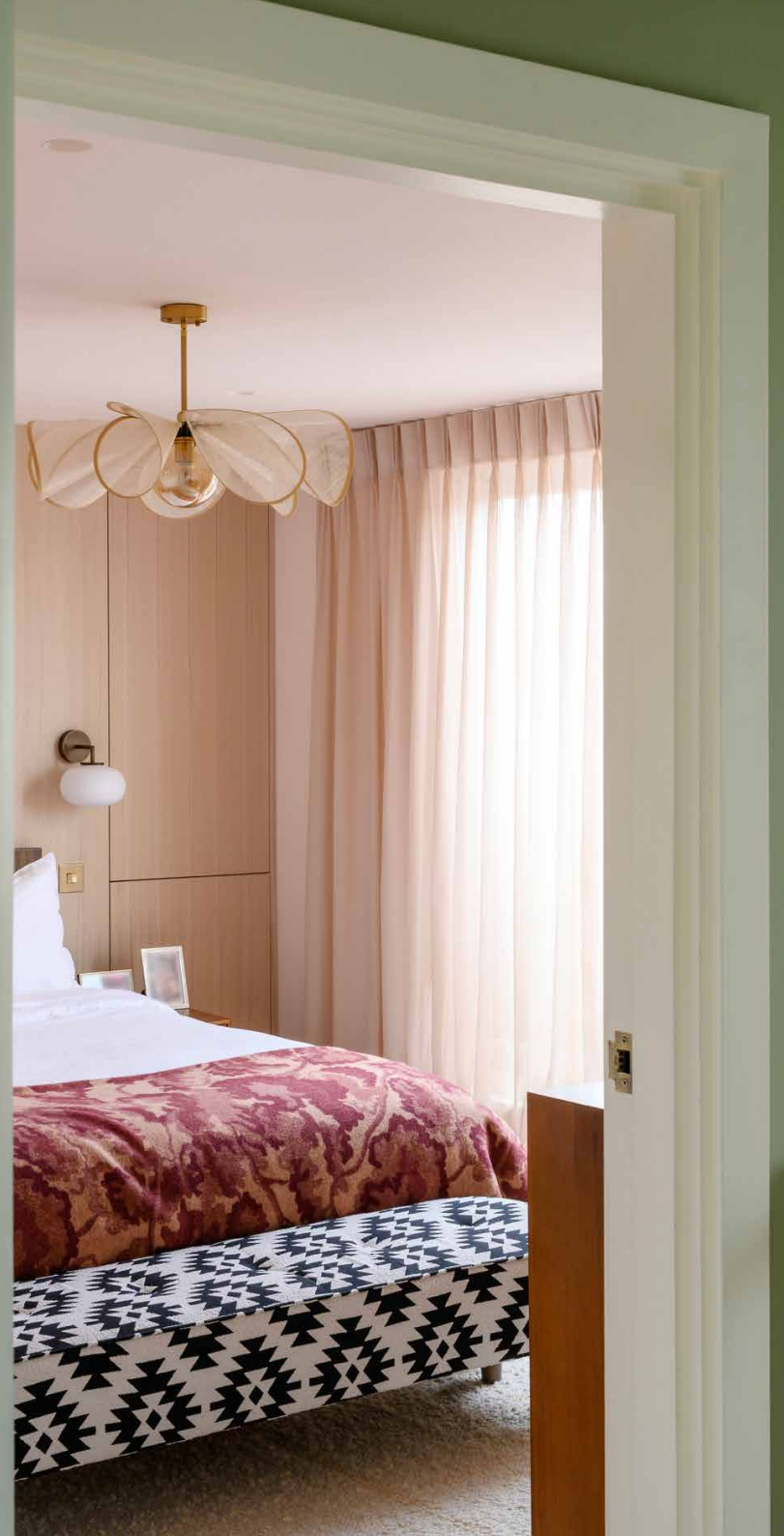












The principal bedroom continues the home's restrained palette. Pale blush walls sit alongside warm timber cladding, illuminated by light from sliding doors leading to the balcony. Through an arched opening, floor-to-ceiling wardrobes connect to an en suite bathroom finished with terracotta Claybrook tiles and a walk-in shower screened with glass blocks.

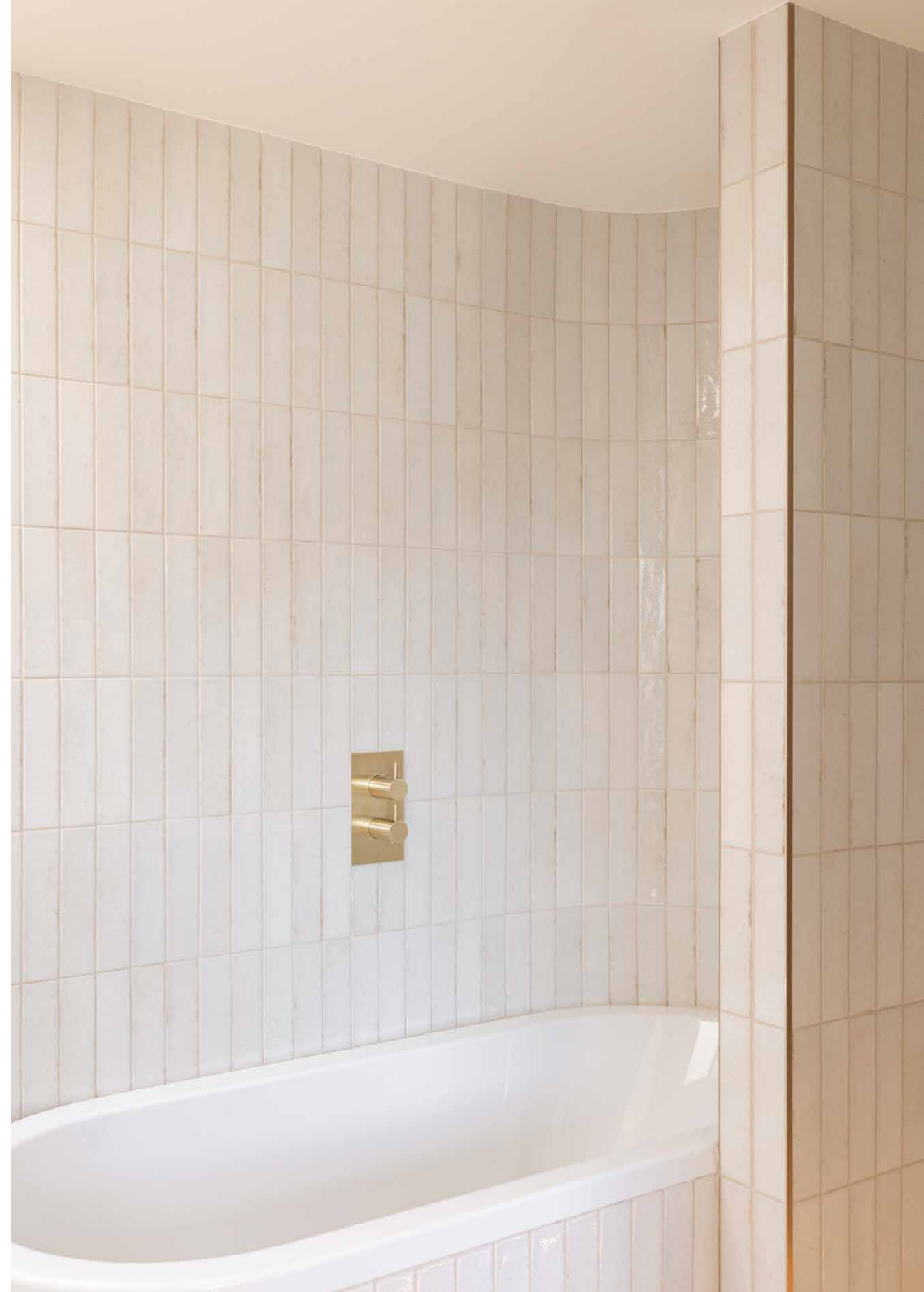
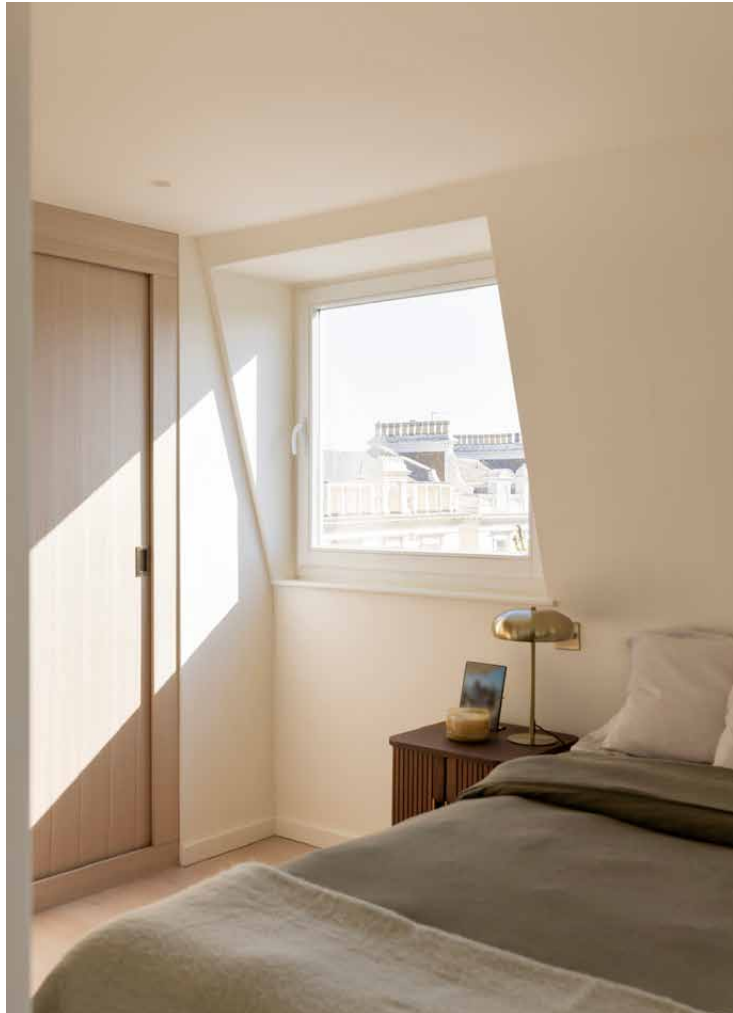
Wood flooring extends into the guest bedroom, where neutral tones and natural light create a similarly tranquil atmosphere. Its en suite bathroom is finished in cream Claybrook tiles, with a roof light above enhancing the serene, spa-like feel.

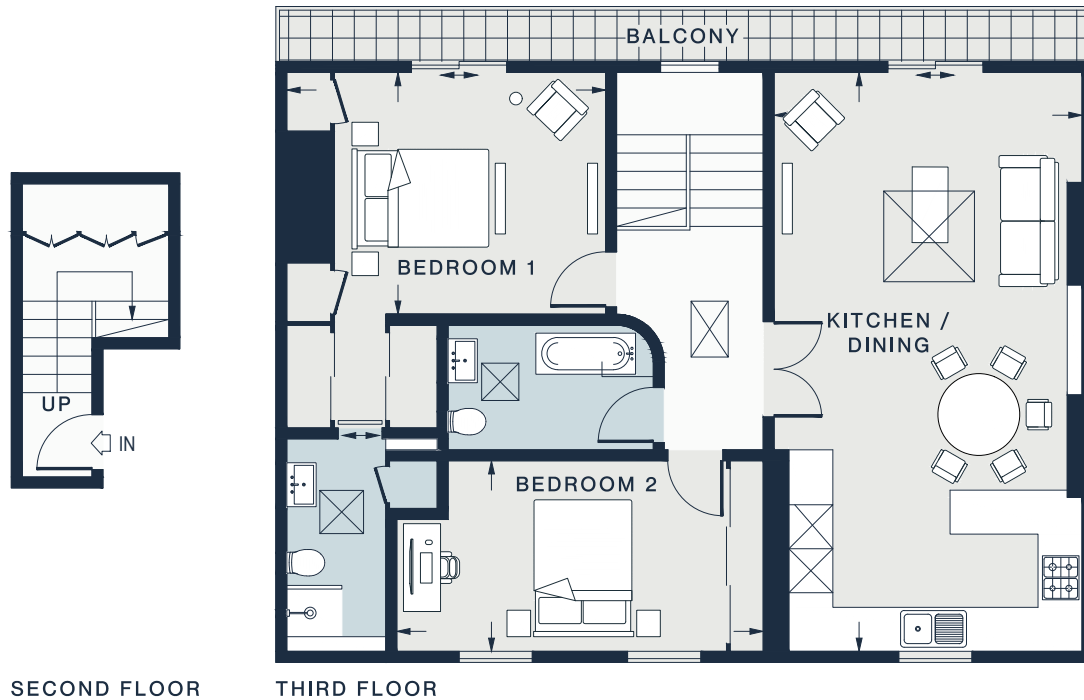












## Property Details

- Open-plan kitchen, dining and reception room
- Principal bedroom suite
- Guest bedroom suite
- Underfloor heating in kitchen and bathrooms
- Bowers and Wilkins built in speakers
- Full-width balcony
- Royal Borough of Kensington and Chelsea

Approx. 986 sq ft / 91.7 sq m

EPC=C

Tenure: Leasehold

Lease Length: circa 998 years

Annual Service Charge: Approx. £1,900

Council Tax Band: G

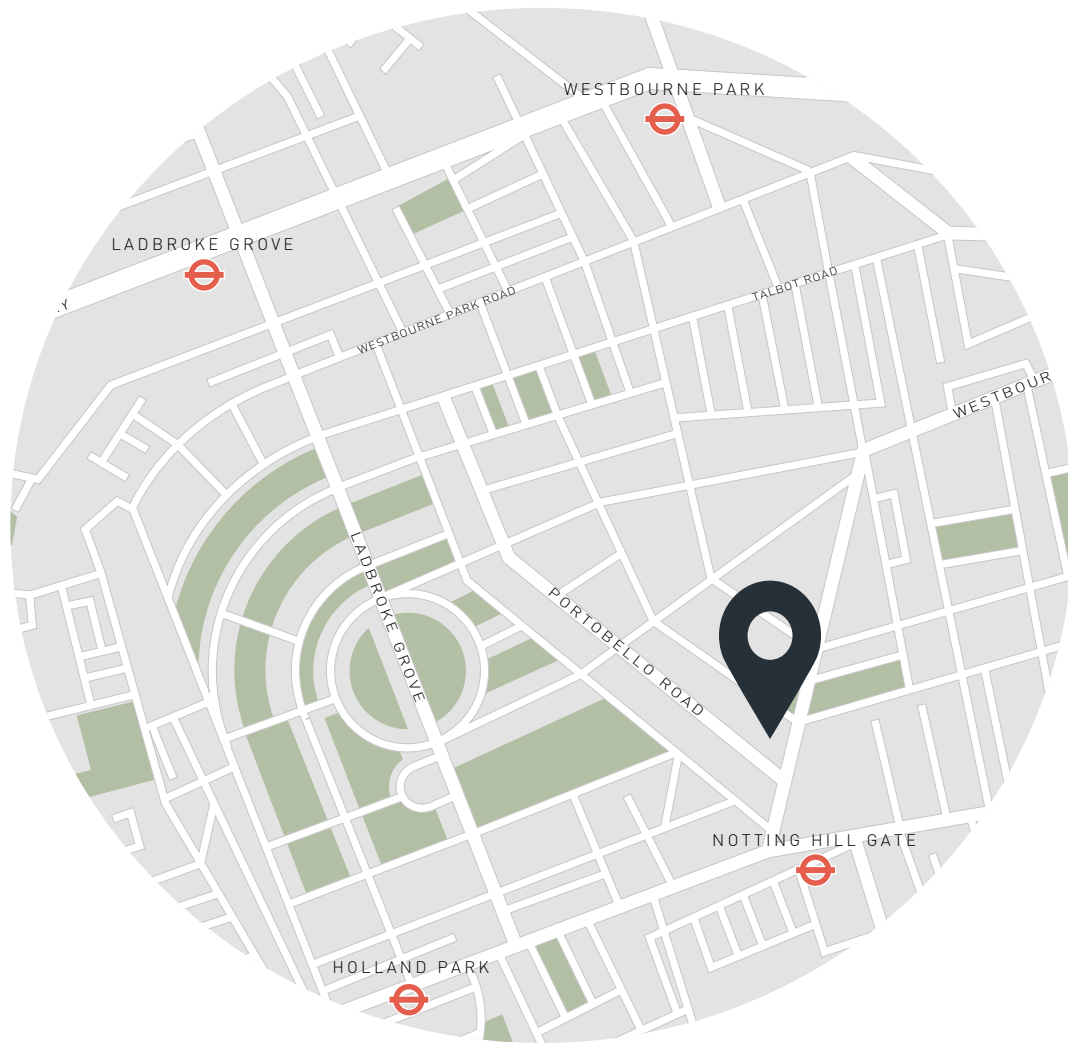
KITCHEN / DINING  
25'11 x 13'10 (7.8m x 4.2m)

BEDROOM 1  
14'3 x 10'11 (4.3m x 3.3m)

BEDROOM 2  
16'8 x 8'8 (5.0m x 2.65m)

Second Floor = 64 sq ft / 6.0 sq m  
Third Floor = 922 sq ft / 85.7 sq m  
Approx. Gross Internal Area = 986 sq ft / 91.7 sq m

Floor plans are for illustrative purposes only and not to scale. Compliant with RICS code of measuring practice.  
Prepared for Domus Nova. Copyright © All Rights Reserved.



## Location

Just a short walk away from the heart of Notting Hill, an easy sense of tranquillity defines Pembridge Villas. Start the day with breakfast or brunch at Farm Girl, then stroll along Portobello Road to browse the vintage stores and antique stalls. Stop by Zephyr for a Grecian inspired lunch, picking up groceries from Daylesford Organic on the way back home. For a relaxed evening out, head to the Electric Cinema, then relish late night drinks at Gold.

Notting Hill Gate – 5 mins (Central, Circle, District)



# Who ——— we are

Forward-thinkers in property, design and culture, we're an estate agency that hits refresh.

Domus Nova was born out of a desire to do things differently; to break the traditional agency model and focus on design-led homes in London and Ibiza, all while delivering the highest levels of personal service.

Our story starts in the nineties when we founded Notting Hill's first boutique agency – and we continue to open the doors to the most remarkable spaces, revealing them to our like-minded community.

We want to help you live better – and believe considered design can do that. That's why we remain committed to building on our legacy, in collaboration with BARNES International, an established agency with a market-leading presence in 22 countries.

Uniting our local insight and curated portfolio with BARNES International's expansive reach, we can facilitate the best opportunities in not only London and Ibiza, but also across Europe, the US and further afield – whether that's a château in the South of France, a penthouse in New York, or a chalet in the Swiss Alps.



# DOMUS NOVA

Specialising in London  
and Ibiza's design-led homes

Let's talk

020 7221 7817

[sales@domusnova.com](mailto:sales@domusnova.com)

---

The particulars above are a guide, not an offer or contract. Descriptions, photographs and plans are not statements or representations of fact. Measurements are approximate and not to scale. Prospective purchasers must verify the accuracy of the information within the particulars. Domus Nova does not give any representations or warranties; nor represent the Seller legally. Domus Nova has no liability, for any costs, losses or expenses incurred by the Seller or a prospective buyer relating to the sales and buying transaction.

Our Sales Disclaimer, trading names and privacy policy on how your data is processed and used is found in full on our website in our [Privacy Statement](#).

© 2026 Domus Nova in partnership with BARNES International. All rights reserved.

*In partnership with*  
**BARNES**  
INTERNATIONAL REALTY