

DOMUS NOVA

Pembridge Square

Bayswater W2

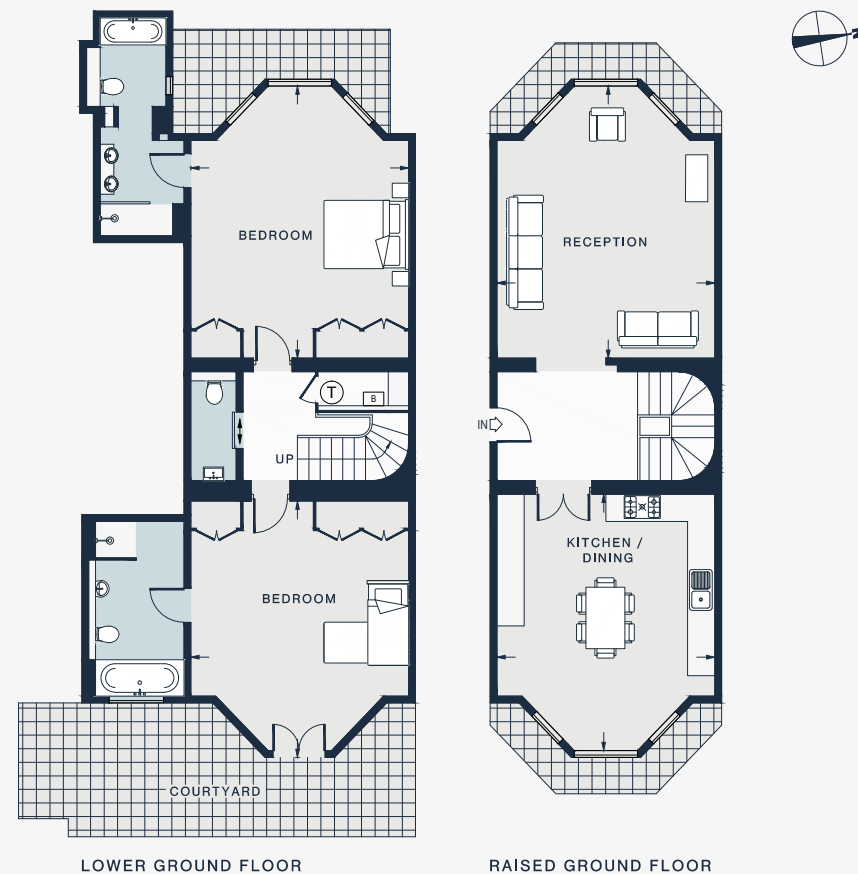
APPROXIMATE GROSS INTERNAL AREA

1582 sq ft / 147 sq m

020 7221 7817

domusnova.com

LONDON | IBIZA



LOWER GROUND FLOOR

RAISED GROUND FLOOR

BEDROOM

18'6 x 15'6 (5.6m x 4.7m)

BEDROOM

19'8 x 14'2 (6.0m x 4.3m)

RECEPTION

19'7 x 15'10 (6.0m x 4.8m)

KITCHEN / DINING

18'6 x 15'10 (5.6m x 4.8m)

Approx. Gross Internal Area = 1582 sq ft / 147 sq m

Floor plans are for illustrative purposes only and not to scale. Compliant with RICS code of measuring practice.