

DOMUS NOVA

Pembridge Crescent

Notting Hill W11

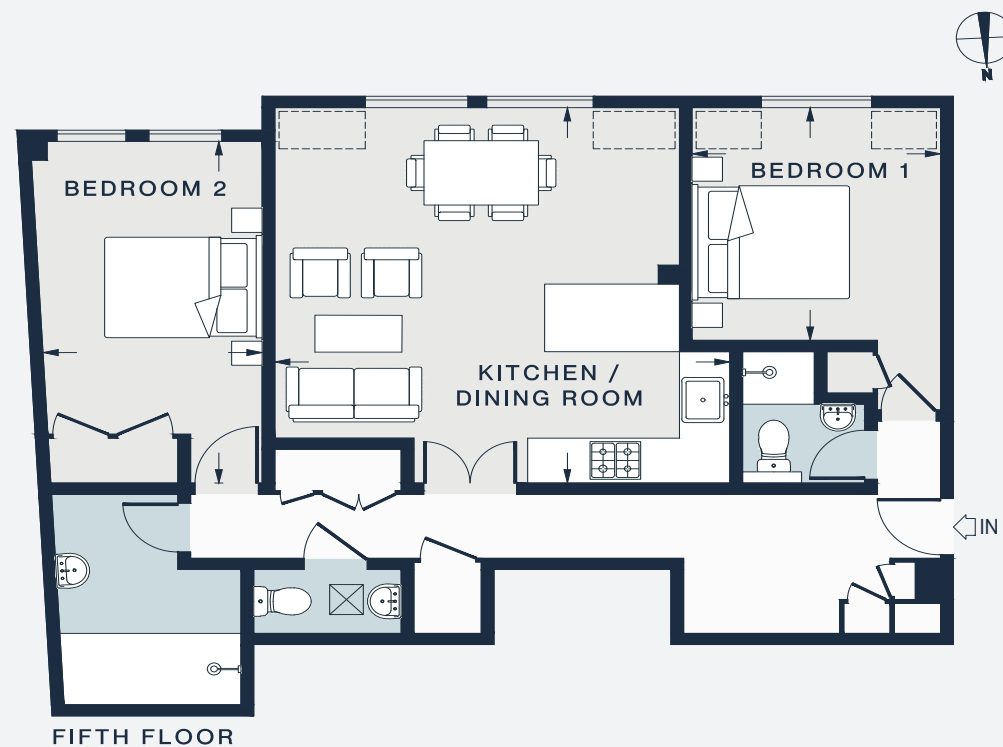
APPROXIMATE GROSS INTERNAL AREA

794 sq ft / 73.8 sq m

020 7727 1717

domusnova.com

LONDON | IBIZA



KITCHEN / DINING ROOM
17'9 x 16'6 (5.4m x 5.0m)

BEDROOM 1
10'2 x 9'7 (3.1m x 2.9m)

BEDROOM 2
14'11 x 8'7 (4.5m x 2.6m)

Approx. Gross Internal Area = 794 sq ft / 73.8 sq m

Floor plans are for illustrative purposes only and not to scale. Compliant with RICS code of measuring practice. Furniture layouts are indicative only. This property may be furnished, part-furnished or unfurnished. Please refer to your agent for details.