

DOMUS NOVA



Peel Street W8
£3,100,000



Minimalism and modern design unite at this four-bedroom Kensington townhouse.

Perfectly placed between Hyde and Holland Park, this architect-designed townhouse enjoys an unrivalled proximity to west London's highlights. Set on a street of pristine period façades, a sense of sophistication effortlessly captivates. Beyond its heritage framework however, multiple floors of contemporary interventions redraw this home with a modern eye.

The generous reception room forms an inviting impression, with bright white walls considerably contrasted by dark wooden floors. An antiqued mirror feature wall centres the space, while a curved window seat offers an idyllic vantage point across to the kitchen. Conceived with a minimalist material palette, smooth white cabinetry and fitted Miele appliances produce a pristine culinary setting. A monolithic skylight channels light inside, connecting seamlessly with a wall of glazing to draw in an alfresco feeling.



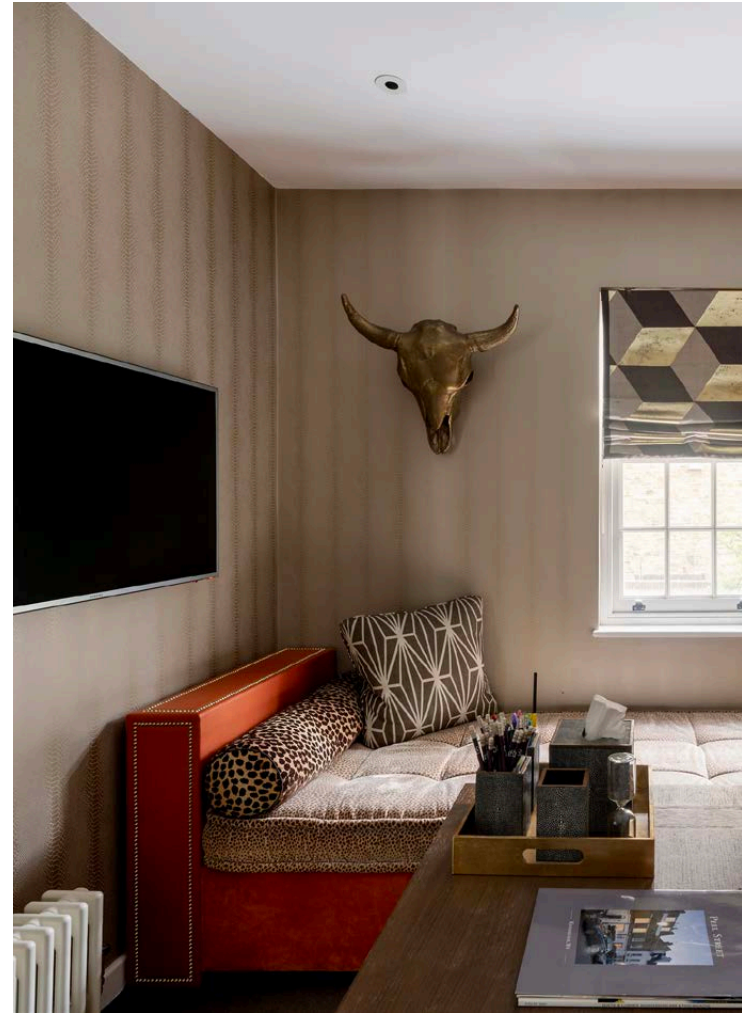






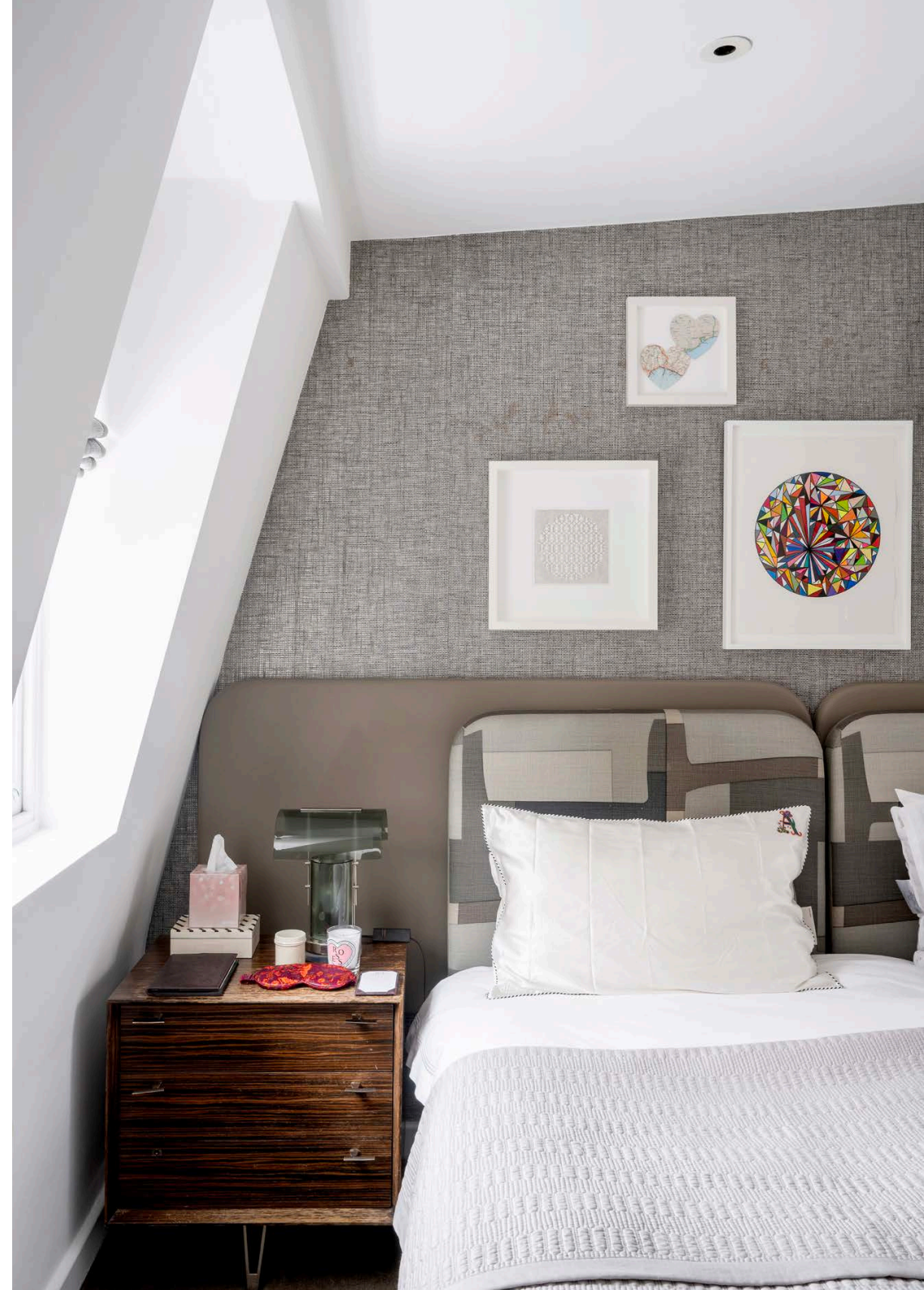
“ A monolithic skylight channels light inside, connecting seamlessly with a wall of glazing to draw in an alfresco feeling.





Found at the top of the home, a tranquil principal bedroom suite intertwines tone and texture. A space that enables effortless mornings, both a dressing room and marble-wrapped en suite bathroom sit adjacent, while an alcove is the perfect spot for crafting coffees in the comfort of your bedroom. To the opposite side, draw open a glass door to discover a south-facing roof terrace – a serene space that benefits from all-day sunshine. Two further bedrooms sit across the first floor, both adorned in calming muted hues. Serving these rooms is a striking marble bathroom, fitted with a freestanding bathtub and walk-in rainfall shower.

Descending to the lower ground floor, a media room is dressed in deep hues ideal for movie nights. A bedroom suite sits opposite, brightened by an enclosed lightwell that offers a small space for fresh air.





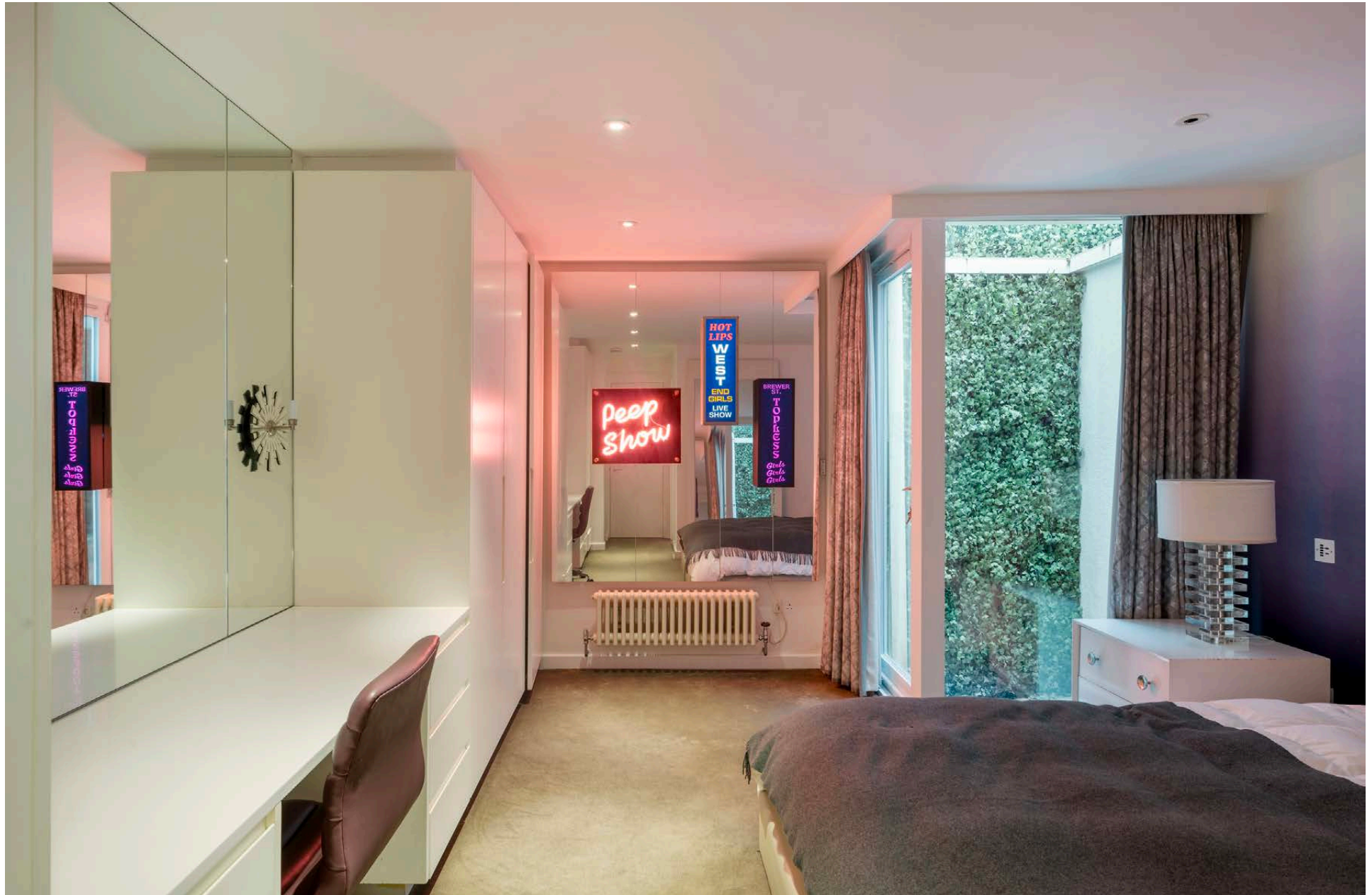
















SFS

14 Resident permit holders only
P
Mon-Fri 8:30am-10pm
Sat 8:30am-1:30pm

C



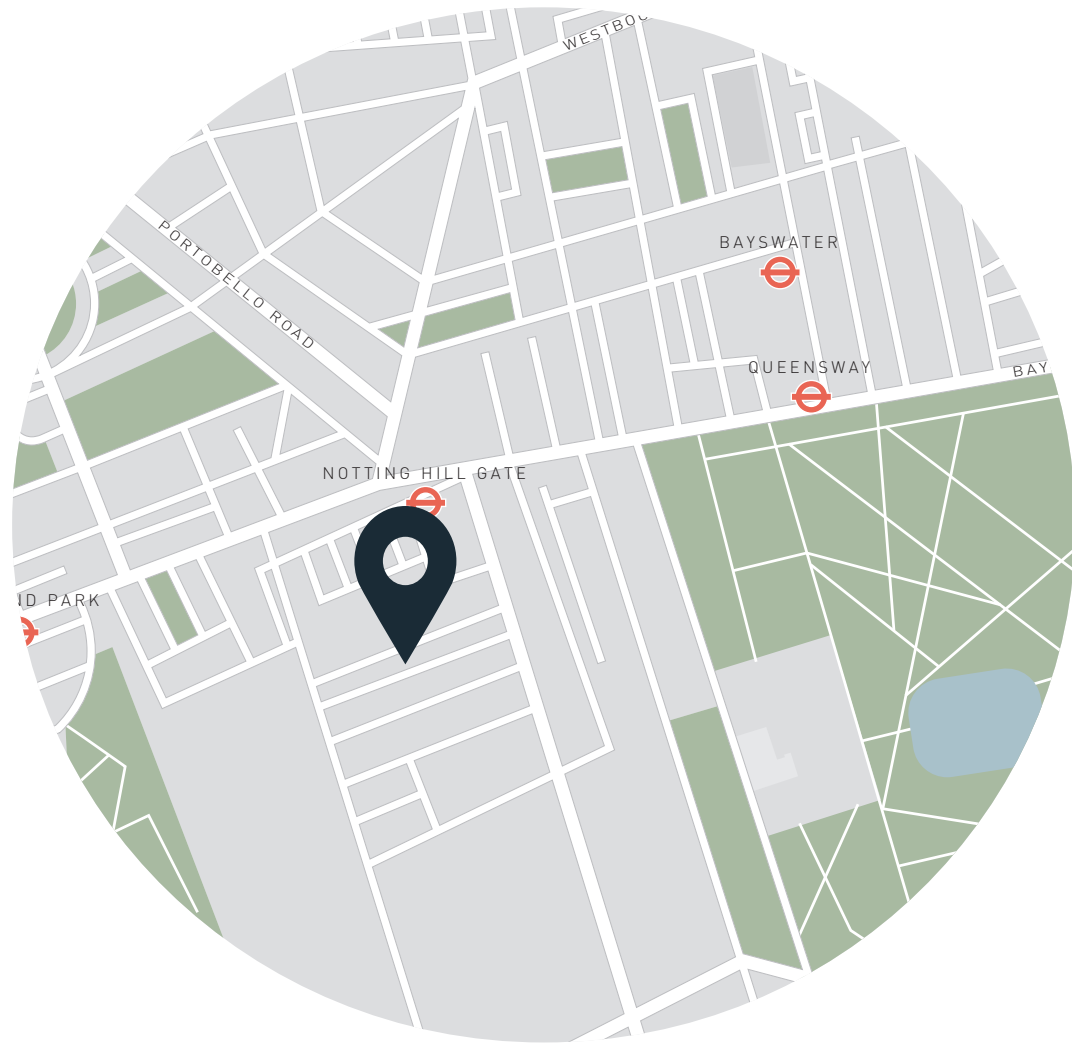
Property Details

- Open-plan kitchen and reception room
- Principal bedroom suite with dressing room
- Guest bedroom suite
- Two further bedrooms
- Family bathroom
- Media room
- Utility room
- Cloakroom
- Roof terrace
- Royal Borough of Kensington & Chelsea

Approx 1,773 sq ft / 164.7 sq m
Tenure: Freehold
Council Tax Band: G
EPC - D

Approx. Gross Internal Area = 1,773 sq ft / 164.7 sq m

Floor plans are for illustrative purposes only and not to scale. Compliant with RICS code of measuring practice.



Location

A neighbourhood steeped in history and rich in culture, Peel Street is on the doorstep to West London's most refined streets. Pick up a caffeine kick from LIFT, then venture to the verdant lawns of Kensington Gardens or Holland Park. Kensington High Street is a short walk away for shopping and grocery offerings. Wander down to Kensington Church Street for antiques browsing, or up into Notting Hill for eclectic stalls and a film at the Electric Cinema or The Gate Picturehouse. Complete the evening with fine dining at local favourites Kitchen W8, Clarke's or Churchill Arms.

Notting Hill Gate (5 mins)

Holland Park (10 mins)

Specialising in London
and Ibiza's design-led homes

Let's talk
020 7221 7817
sales@domusnova.com
domusnova.com

The particulars above are a guide, not an offer or contract. Descriptions, photographs and plans are not statements or representations of fact. Measurements are approximate and not to scale. Prospective purchasers must verify the accuracy of the information within the particulars. Domus Nova does not give any representations or warranties; nor represent the Seller legally. Domus Nova has no liability, for any costs, losses or expenses incurred by the Seller or a prospective buyer relating to the sales and buying transaction.

Our Sales Disclaimer, trading names and privacy policy on how your data is processed and used is found in full on our website in our [Privacy Statement](#).

© Domus Nova 2024. All rights reserved.