

# DOMUS NOVA



Palace Gardens Terrace W8  
£11,500,000





Just minutes from Kensington Gardens, this six-bedroom family townhouse is elegant in design, spacious in aspect and serene in feel.

Set on a quintessential Kensington street with elegant stucco-fronted townhouses and a tranquil atmosphere, this six-bedroom family home is captivating in scale and ripe for interior creativity. Across its six spacious floors, expect flawless architectural design, an abundance of natural light and sun-drenched outdoors spaces.

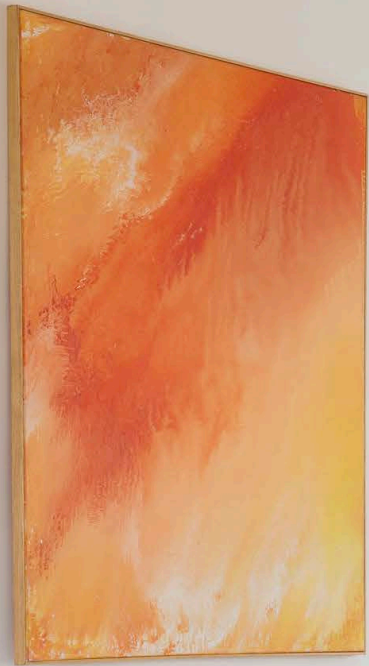
An entrance hallway leads through double doors into the open-plan kitchen and dining room. Warm wood floors span the entire space, which is brightly lit through dual-aspect sash windows. At one end, timber cabinets and stainless steel appliances make for a modern culinary setting. At the other, an ornate fireplace sits in between two whitewashed display cabinets. Also on this floor is a quiet study, which leads through a glass-clad conservatory to the private garden. A sense of privacy is afforded with the rear brick wall, while an array of flowers and foliage are planted throughout.

Occupying the entire first floor is a formal reception room, which bears hallmarks of the home's period heritage with decorative cornicing, a ceiling rose and a marble fireplace. Natural light pours through large sash windows, illuminating the whitewashed walls and glossy wood floors. On the half landing, curved French windows open onto a charming terrace overlooking the garden below. A second reception room is located on the lower-ground floor, which has direct access to a patio.

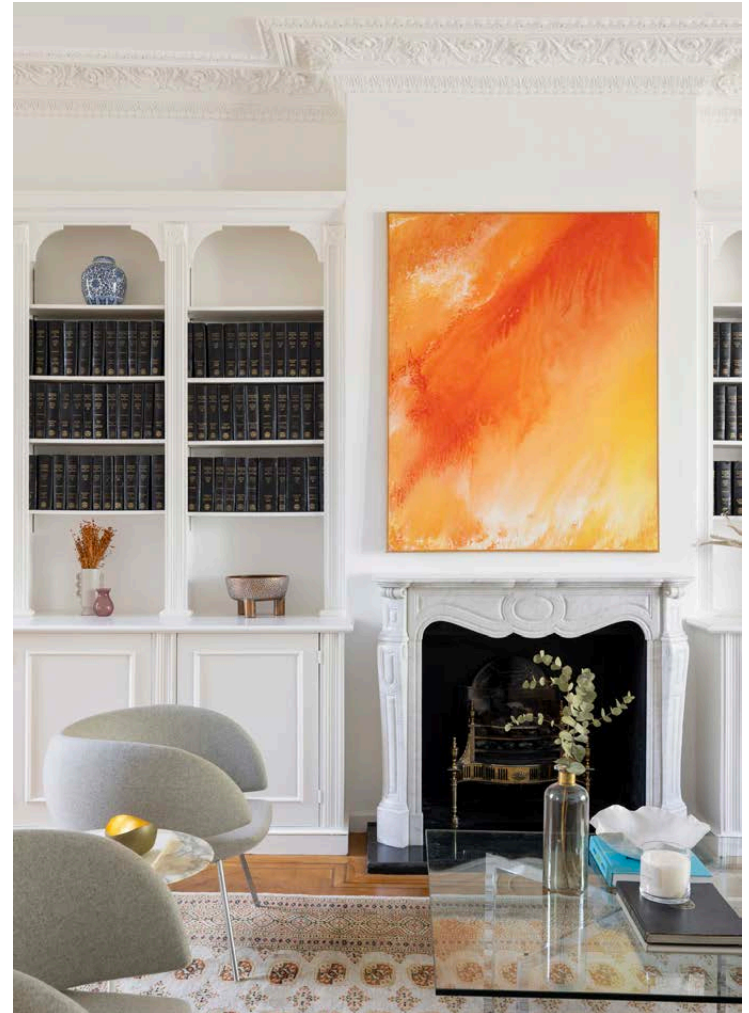






















“

Across its six spacious floors, expect flawless interior design, an abundance of natural light and sun-drenched outdoors spaces.















The principal bedroom suite takes over the second floor. It's a thoroughly elegant affair, with grey carpets and a series of integrated whitewashed wardrobes. Next door, its en suite bathroom features a dual vanity and pebble-toned marble that wraps around a bath and separate shower. Five guest bedrooms are spread across the lower-ground and third floors, served by contemporary bathrooms. At the top of the home, find a wood-panelled gym room, complete with a bathroom and sauna.







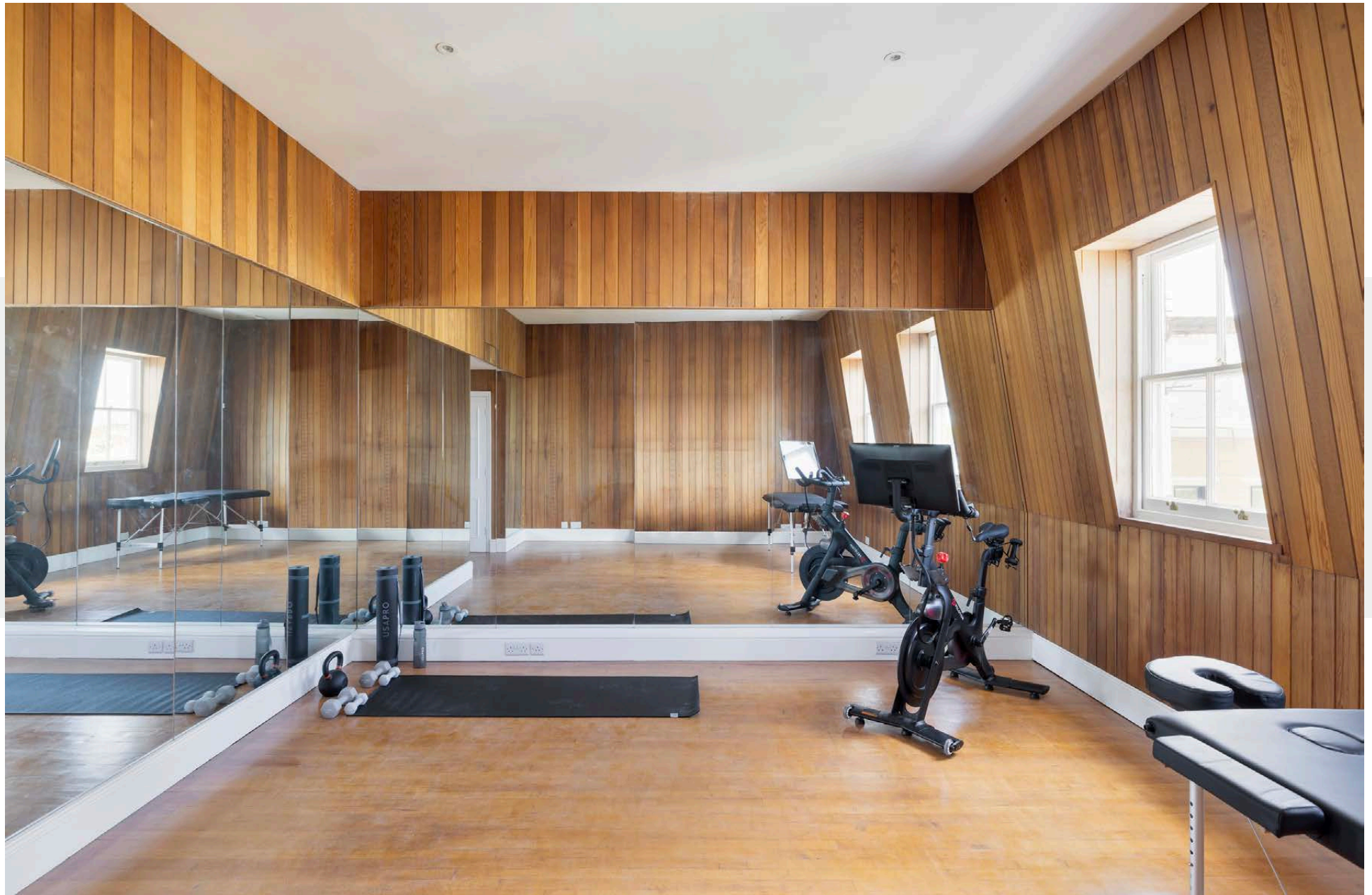




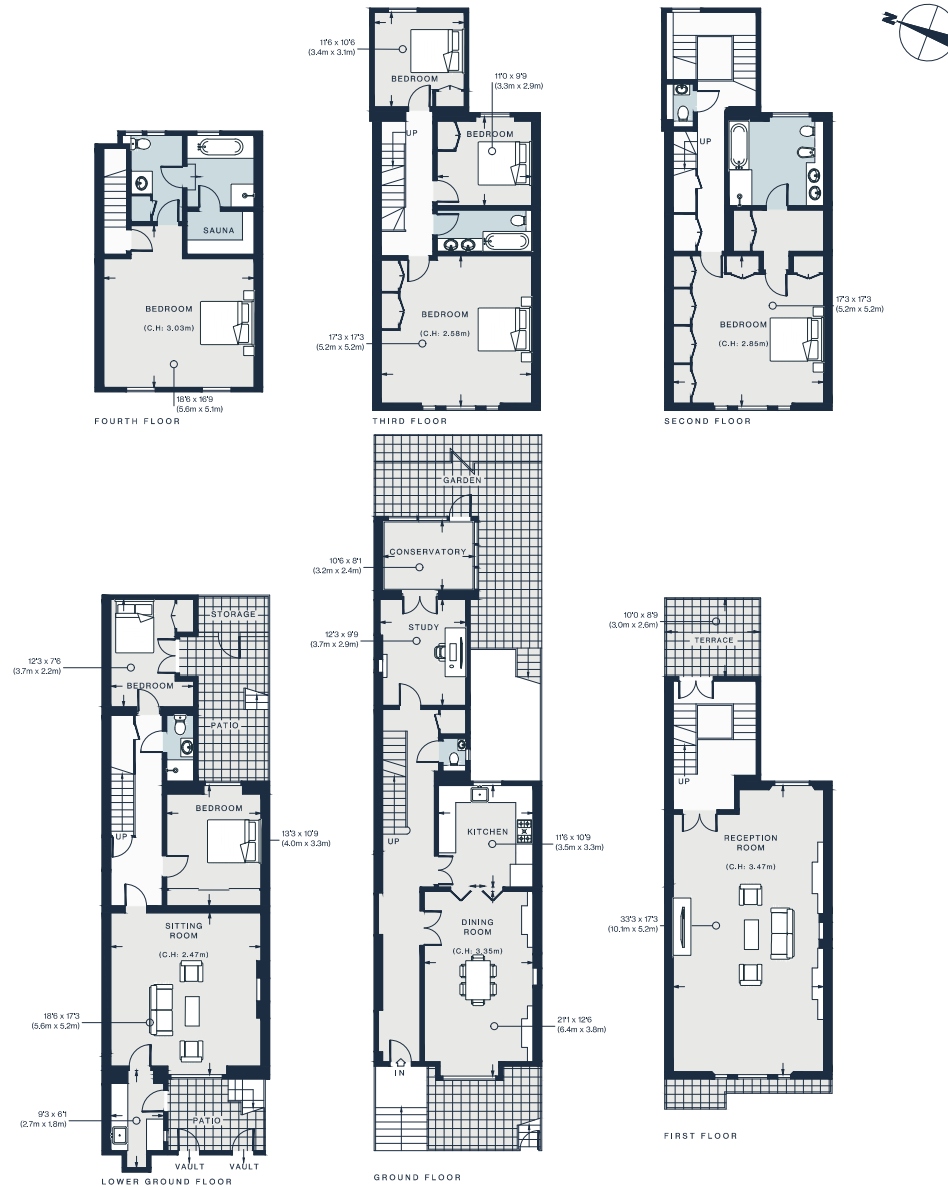












Approx. Gross Internal Area = 4,182 sq ft / 388.55 sq m

Floor plans are for illustrative purposes only and not to scale. Compliant with RICS code of measuring practice.

## Property Details

- Two reception rooms
- Open-plan kitchen and dining room
- Principal bedroom suite
- Five further bedrooms
- Two further bathrooms
- Study
- Conservatory
- Gym room and sauna
- Garden and terraces
- Utility room
- Royal Borough of Kensington & Chelsea

Approx 4,182 sq ft / 388.55 sq m

EPC - D

Tenure: Freehold

Council Tax Band: H





## Location

A neighbourhood steeped in history and rich in culture, Palace Gardens Terrace is on the doorstep to West London's most refined streets. The verdant lawns of Kensington Gardens are a short walk away, while Holland Park Avenue and Kensington High Street are nearby for shopping and grocery offerings. Venture further up into Notting Hill for antiques boutiques and a film at the Electric Cinema, completed with a night of fine dining at local favourites Kitchen W8, Maggie Jones or Chakra.

Notting Hill Gate - (5 mins)



Specialising in London  
and Ibiza's design-led homes

Let's talk  
020 7221 7817  
sales@domusnova.com  
domusnova.com

The particulars above are a guide, not an offer or contract. Descriptions, photographs and plans are not statements or representations of fact. Measurements are approximate and not to scale. Prospective purchasers must verify the accuracy of the information within the particulars. Domus Nova does not give any representations or warranties; nor represent the Seller legally. Domus Nova has no liability, for any costs, losses or expenses incurred by the Seller or a prospective buyer relating to the sales and buying transaction.

Our Sales Disclaimer, trading names and privacy policy on how your data is processed and used is found in full on our website in our [Privacy Statement](#).

© Domus Nova 2024. All rights reserved.