

DOMUS NOVA

Oxford Gardens

North Kensington W10

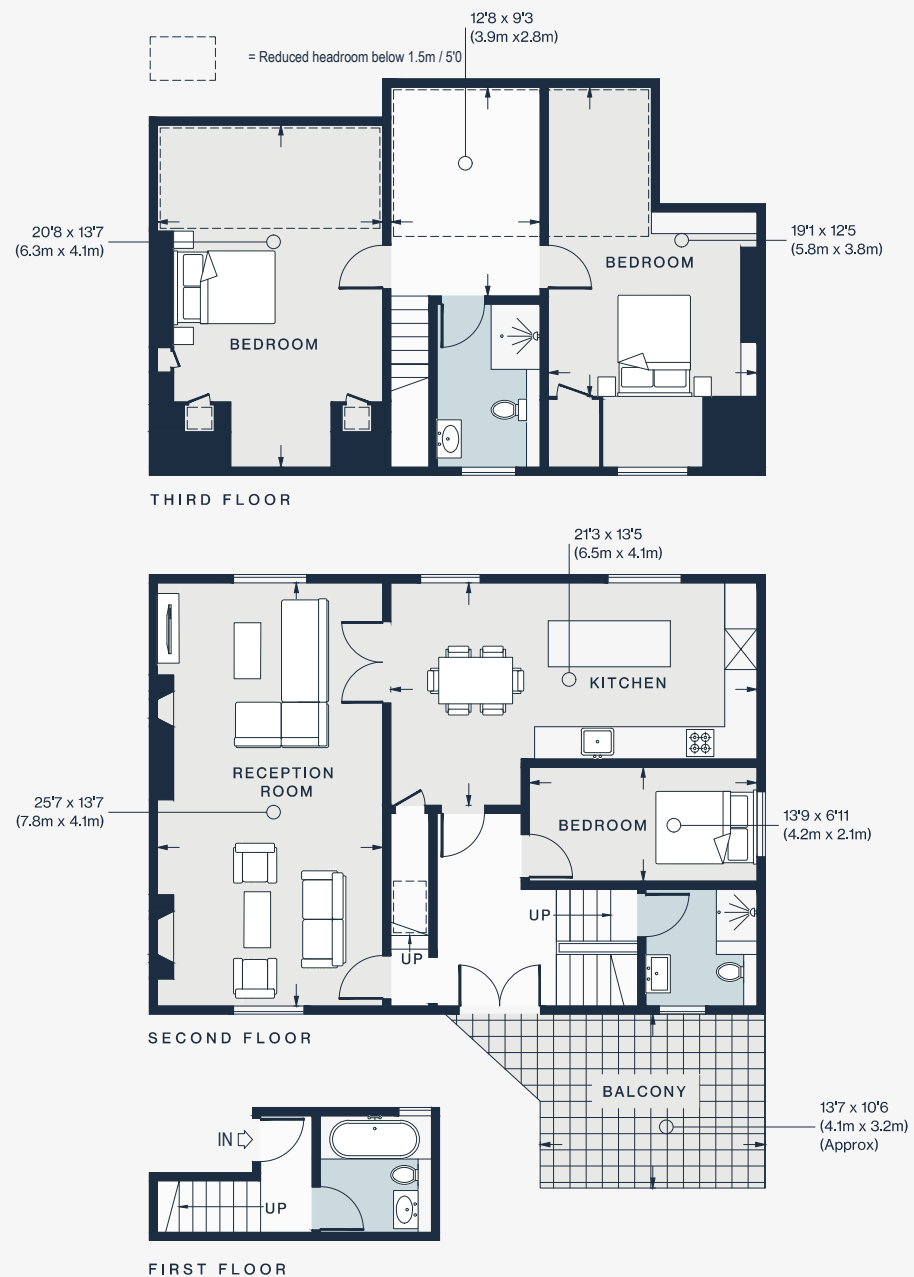
APPROXIMATE GROSS INTERNAL AREA

1,653 sq ft / 153.56 sq m

020 7727 1717

domusnova.com

LONDON | IBIZA



Approx. Gross Internal Area = 1,771 sq ft / 164.6 sq m

Floor plans are for illustrative purposes only and not to scale. Compliant with RICS code of measuring practice