

DOMUS NOVA



Oxford Gardens W10 – £2,250 p/w (SL)

In partnership with **BARNES**
INTERNATIONAL REALTY



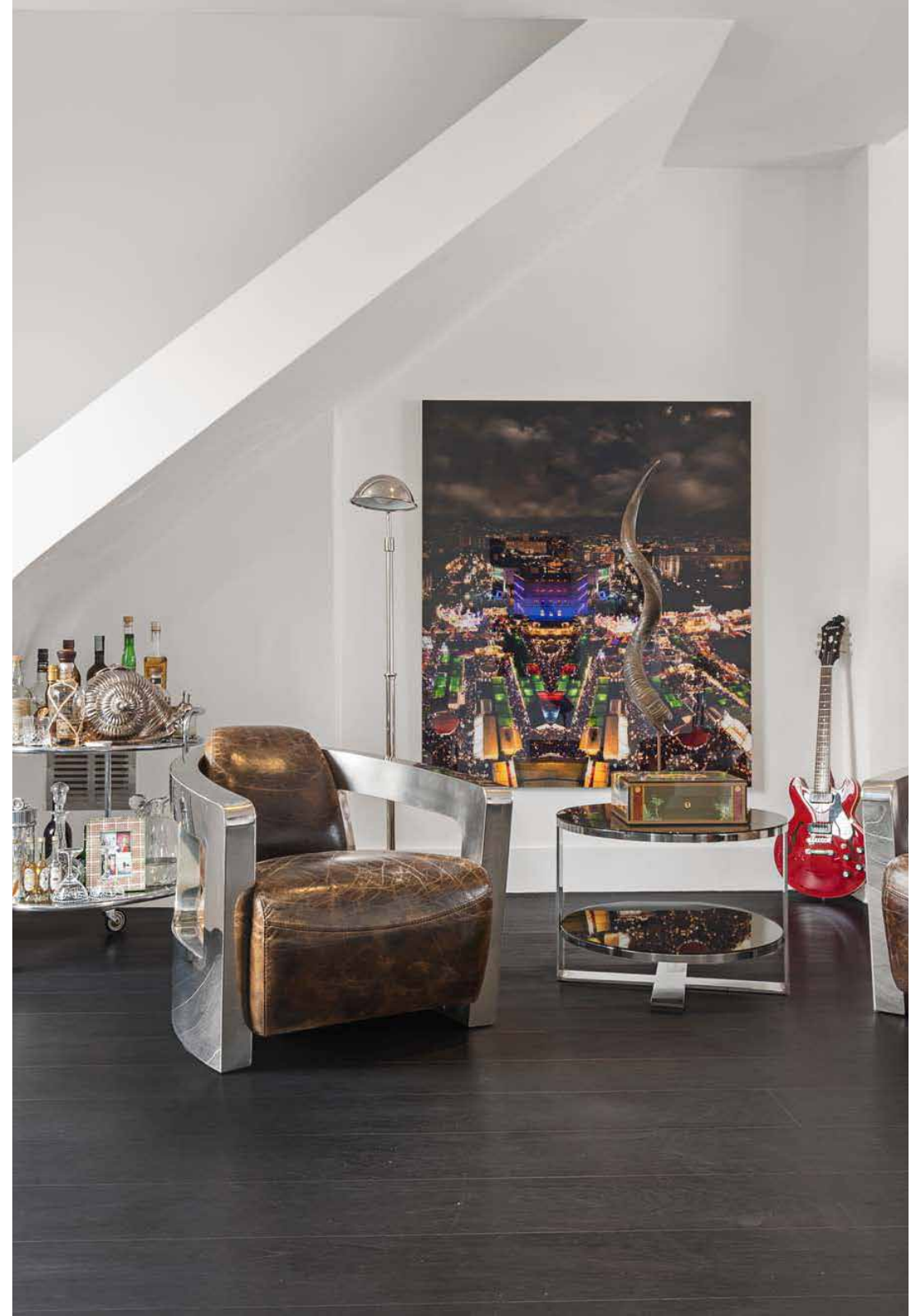
Bold strokes: this is an apartment that exudes confidence from every angle. In the sweeping reception room, period features blend quietly into the background, allowing clever contemporary revisions to come to the fore: glass balustrades, statement light fittings and a stone feature fireplace. A monochromatic palette of dark stained floors and crisp white walls makes the perfect canvas for a collection of antiques and curiosities, deftly arranged throughout.

An impressive stainless-steel chef-grade kitchen with a large range cooker means entertaining will be effortless in this sleek, well-equipped space. Dim the lights for long drawn-out dinners around the glass dining table. Let gatherings spill outdoors onto the roof terrace, with double doors leading from the hallway. A staircase at either end of the flat takes you upstairs.

An impressive stainless-steel chef-grade kitchen with a large range cooker means entertaining will be effortless in this sleek, well-equipped space. Dim the lights for long drawn-out dinners around the glass dining table. Let gatherings spill outdoors onto the roof terrace, with double doors leading from the hallway. A staircase at either end of the flat takes you upstairs.

One side leads from the hall to a large landing space, roomy enough for a desk or sofa, and currently used as a study. The other leads from the living room to the separate shower room and wood-panelled bathroom.

Here, a well-placed skylight over the bath makes this a perfect spot to stargaze from the tub on a clear night. This leads through to the master bedroom – a charming bright room up in the eaves, with reams of storage. A peaceful spot to escape from it all. A second well-sized guest room is located on the lower floor.

















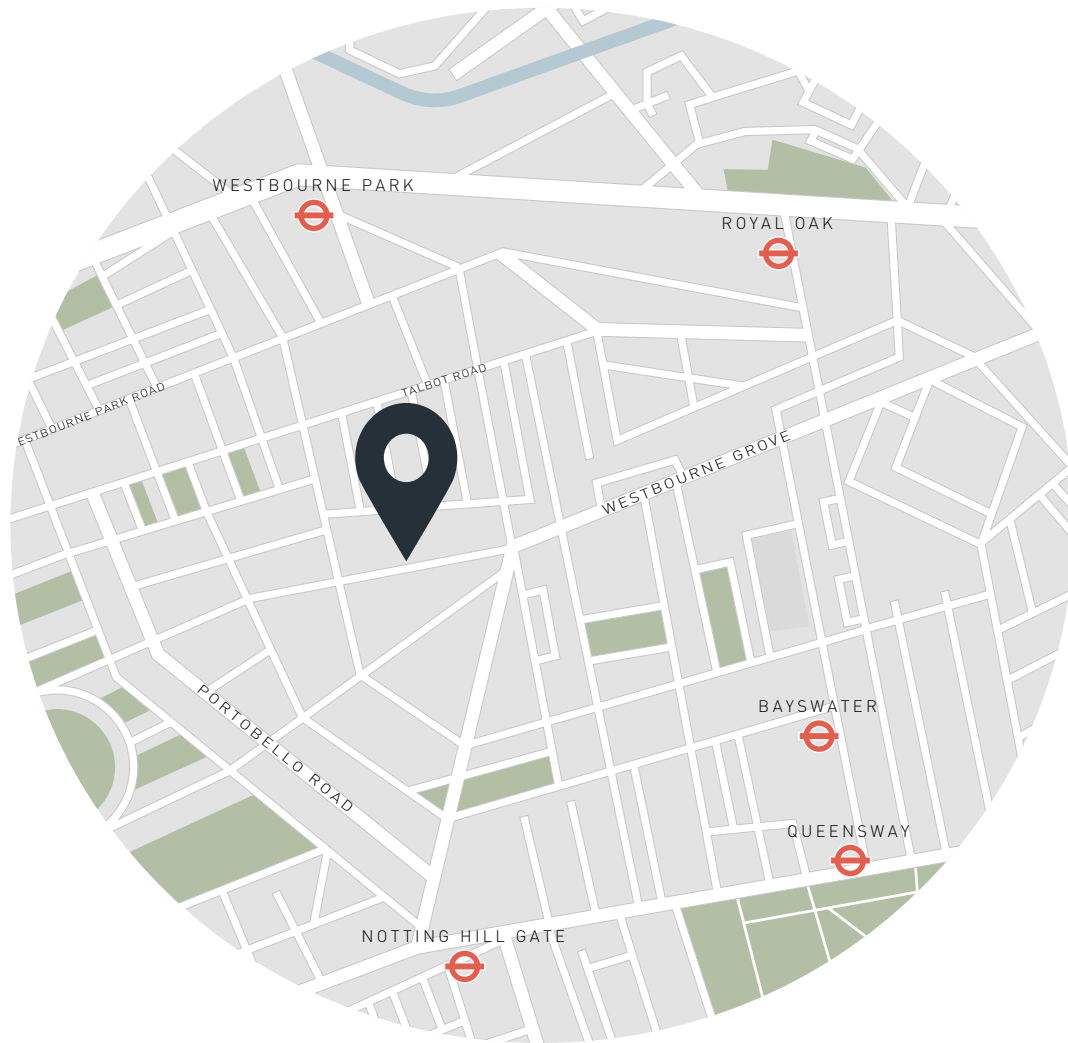
Property Details

- 2 Bedrooms & 2 Bathrooms
- Large, airy reception room
- Principal bedroom suite
- Second bedroom
- Second bathroom
- Modern eat-in kitchen
- Polished wooden floors
- Furnished
- Study area
- Roof terrace
- Royal Borough of Kensington & Chelsea

Approx. 1,443 sq ft / 134.1 sq m
 EPC = C
 Council Tax Band - F
 Deposit payable - £9,600

Approx. Gross Internal Area = 1443 sq ft / 134.1 sq m (Excluding Eaves / Void)

Floor plans are for illustrative purposes only and not to scale. Compliant with RICS code of measuring practice. Furniture layouts are indicative only. This property may be furnished, part-furnished or unfurnished. Please refer to your agent for details.

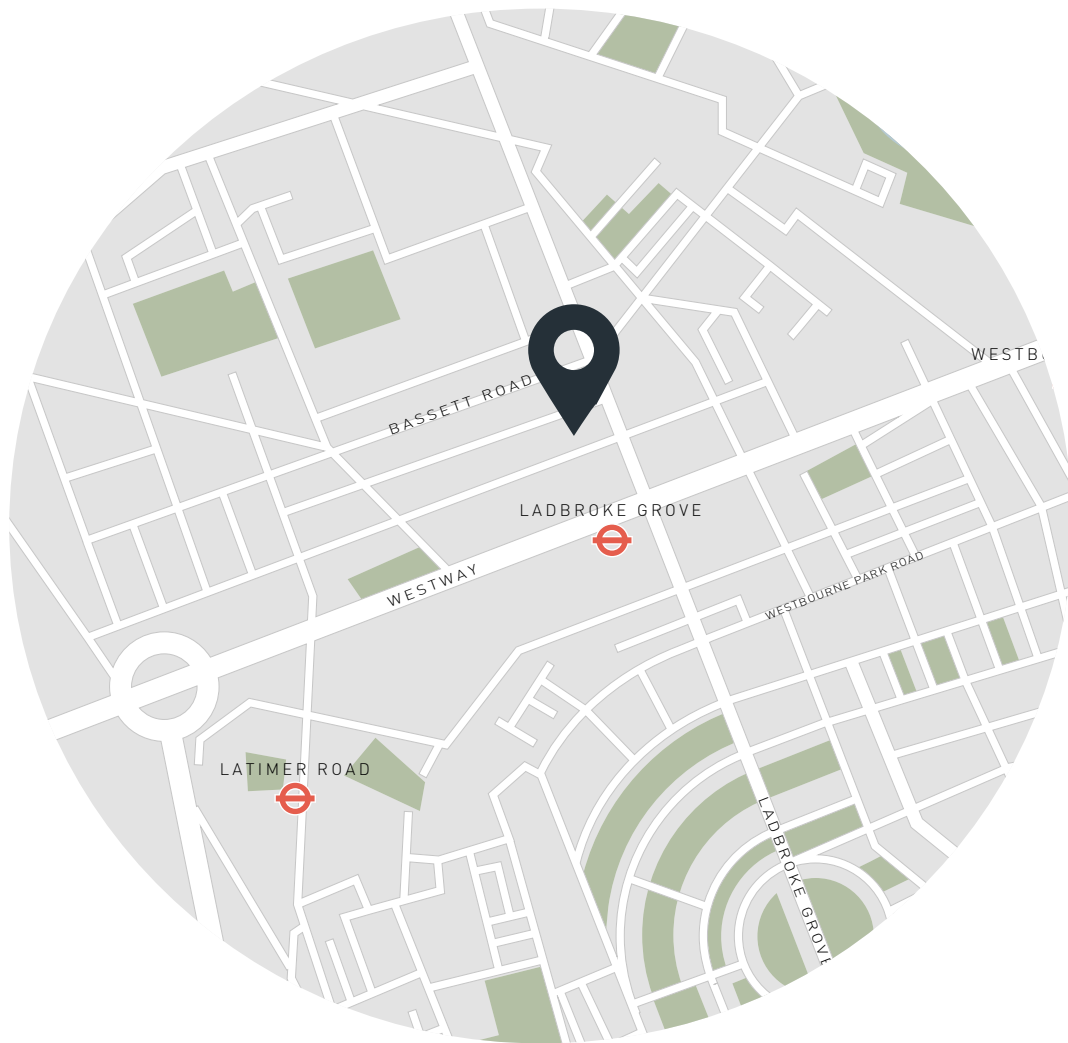


Location

Westbourne Grove is the vibrant artery that feeds Notting Hill, with some of its most-favoured haunts right on your doorstep. Coveted boutiques such as Paolita, Reformation and Sézane are interspersed between refreshment stops – Granger & Co., Bodyism and Ottolenghi to name but a few. Daylesford Organic Farm Shop and Planet Organic are conveniently located for grocery essentials. The expansive lawns of Hyde Park are a short walk away, with the Serpentine Lido poised for early-morning swims. Or head up Portobello Road for a film at the Electric Cinema, followed by dinner at Gold.

Notting Hill Gate - 10 mins (Central, Circle, District)

Ladbroke Grove - 12 mins (Circle, Hammersmith & City)



Location

Tree-lined Oxford Gardens has the best of both worlds: privacy and seclusion (when you want it) from the hubbub of Notting Hill, just around the corner. But ready access to its many vibrant restaurants and bars: dinner and drinks at Gold or gimlets at Portobello Road Gin. Oxford Gardens connects to one of Notting Hill's main arteries: Portobello road. Treasure hunt in the market or swing by the Electric for a film classic on a rainy afternoon

Ladbroke Grove - 5 mins

Westbourne Park - 18 mins



Who ——— we are

Forward-thinkers in property, design and culture, we're an estate agency that hits refresh.

Domus Nova was born out of a desire to do things differently; to break the traditional agency model and focus on design-led homes in London and Ibiza, all while delivering the highest levels of personal service.

Our story starts in the nineties when we founded Notting Hill's first boutique agency – and we continue to open the doors to the most remarkable spaces, revealing them to our like-minded community.

We want to help you live better – and believe considered design can do that. That's why we remain committed to building on our legacy, in collaboration with BARNES International, an established agency with a market-leading presence in 22 countries.

Uniting our local insight and curated portfolio with BARNES International's expansive reach, we can facilitate the best opportunities in not only London and Ibiza, but also across Europe, the US and further afield – whether that's a château in the South of France, a penthouse in New York, or a chalet in the Swiss Alps.



DOMUS NOVA

Specialising in London
and Ibiza's design-led homes

Let's talk

020 7727 1717

lettings@domusnova.com

The property particulars are a guide not statements. Descriptions, photographs, and plans are for guidance and should be checked by the prospective tenant. The Property is offered "subject to contract and references". No warranties, representations, or Tenancy is given by Domus Nova. Expenses incurred by a prospective tenant will not be reimbursed if the Landlord withdraws prior to the Tenancy Agreement being signed, dated and exchanged and cleared funds received. Furniture and other items shown in a property at viewing may belong to a current tenant. The prospective tenant should verify in writing which fixtures and fittings forms part of the Tenancy. Our full lettings disclaimer together with trading names and our [Privacy Policy](#) is shown on our website

© 2025 Domus Nova in partnership with BARNES International. All rights reserved.

In partnership with
BARNES
INTERNATIONAL REALTY