

DOMUS NOVA

Oxford Gardens

North Kensington W10

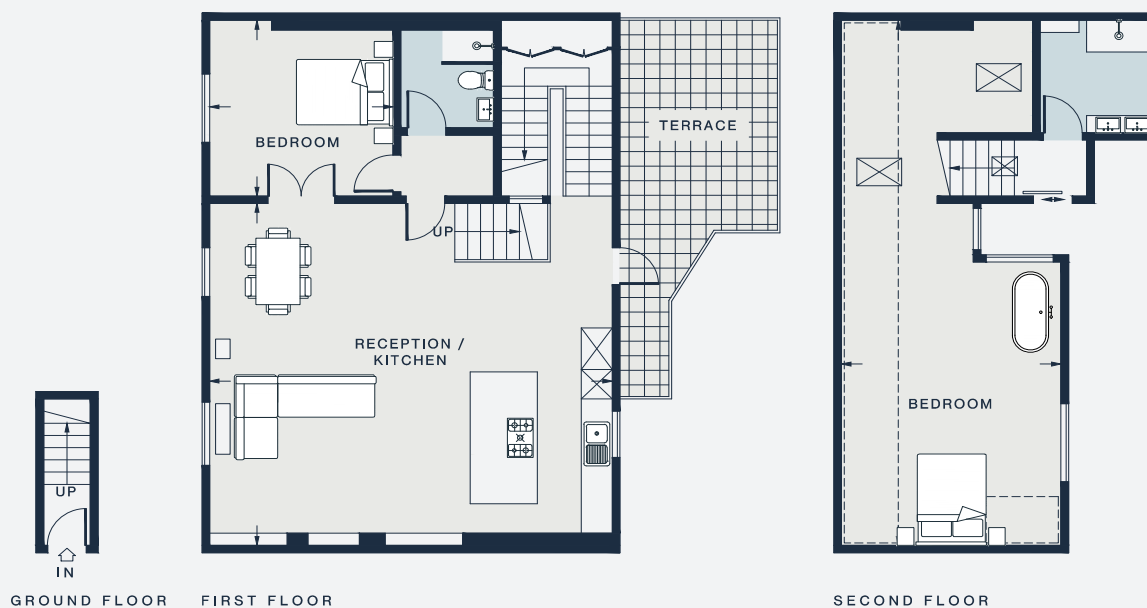
APPROXIMATE GROSS INTERNAL AREA

1,451 sq ft / 134.8 sq m

020 7727 1717

domusnova.com

LONDON | IBIZA



RECEPTION / KITCHEN

25'8 x 23'0 (7.8m x 7.0m)

BEDROOM

11'10 x 11'8 (3.6m x 3.6m)

BEDROOM

35'3 x 14'0 (10.7m x 4.3m)

Approx. Gross Internal Area = 1451 sq ft / 134.8 sq m

Floor plans are for illustrative purposes only and not to scale. Compliant with RICS code of measuring practice. Furniture layouts are indicative only. This property may be furnished, part-furnished or unfurnished. Please refer to your agent for details.