

DOMUS NOVA

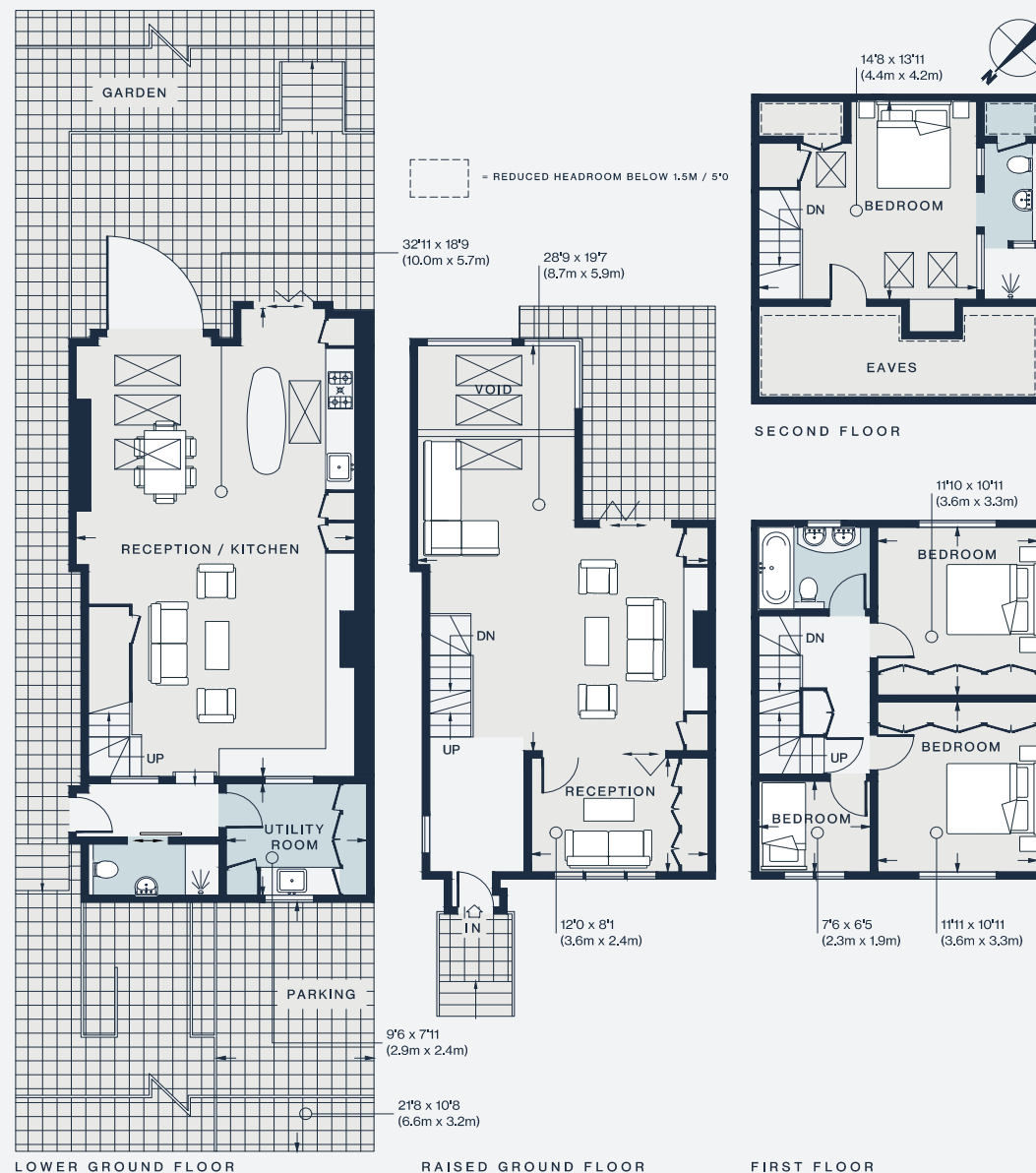
Oxford Gardens
North Kensington W10

APPROXIMATE GROSS INTERNAL AREA

2,139 sq ft / 198.7 sq m

020 7727 1717
domusnova.com

LONDON | IBIZA



Approx. Gross Internal Area = 2,139 sq ft / 198.7 sq m
(Including Eaves / Reduced Headroom / Excluding Void)

Floor plans are for illustrative purposes only and not to scale. Compliant with RICS code of measuring practice.
Furniture layouts are indicative only. This property may be furnished, part-furnished or unfurnished. Please refer to your agent for details.