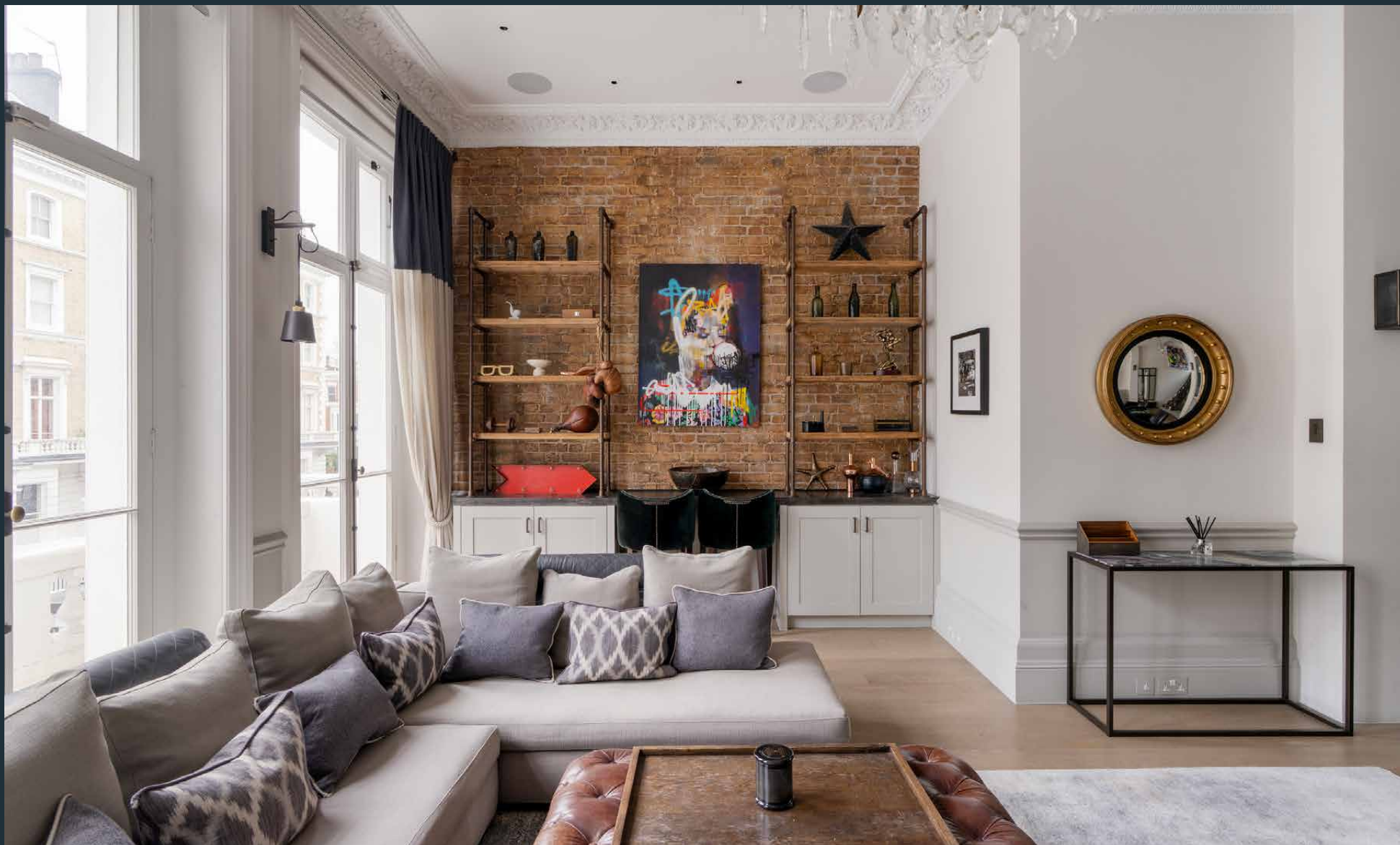


DOMUS NOVA



Onslow Gardens SW7 – £3,500 p/w (LL)

In partnership with **BARNES**
INTERNATIONAL REALTY



Modern yet mindful. This is the reigning aesthetic at Onslow Gardens, a duplex that updates its classic South Kensington framework. Behind the white columns and symmetry: grand proportions and period details provide the structure; colour and curated moments bring the character.

Social spaces unfold across the lower level, where grand proportions set the scene for slow mornings to evenings hosting and everything in between. The main living space makes an impact on entrance: tall sash windows line the elevation and lift an already impressive scale. This is a setting for all occasions – sinking back in the lounge, working at the built-in bar or stepping out to the south-west facing terrace. A staircase draws you down to the lower level, where the kitchen is practical and composed, with clean-lined cabinetry, generous worktops and skylights overhead. The dining area sits above, with French doors that open out to a peaceful patio garden.



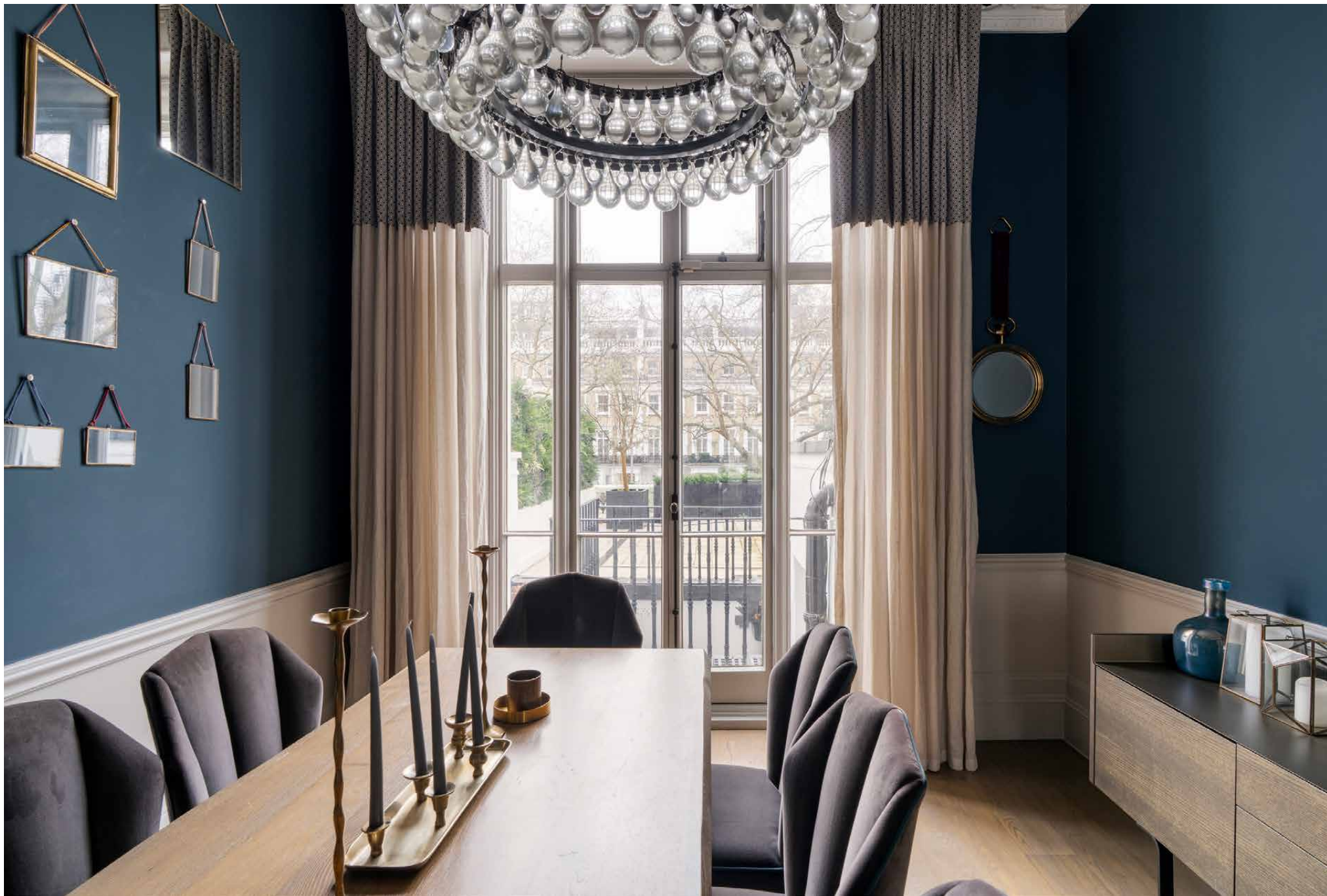








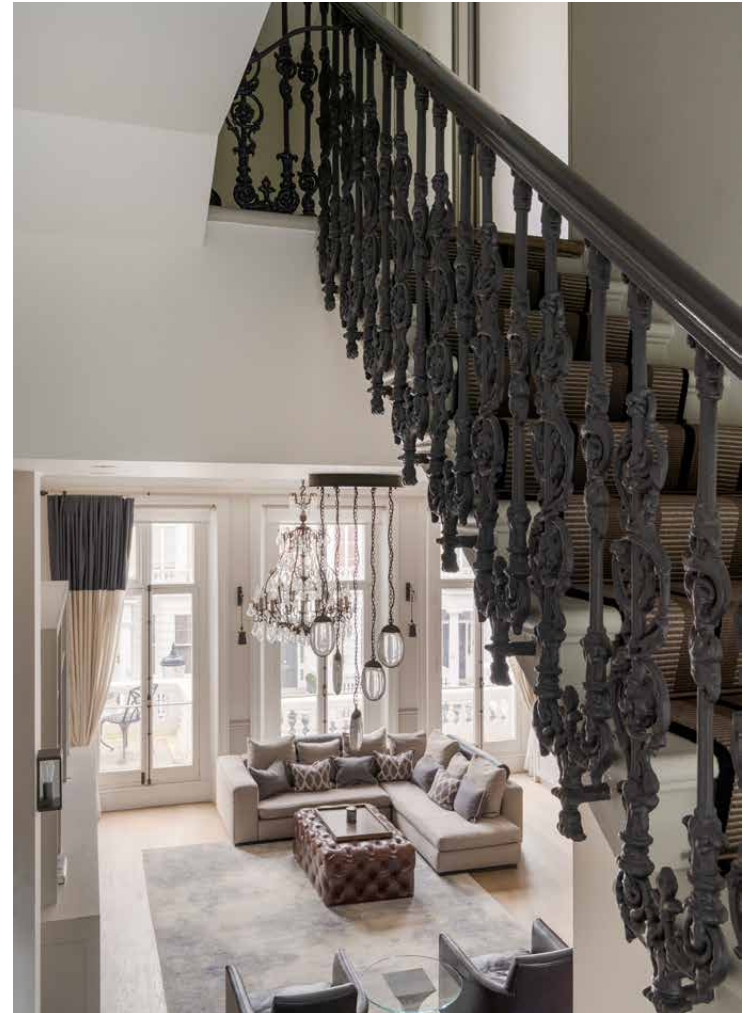
“ The main living space makes an impact on entrance: tall sash windows line the elevation and lift an already impressive scale.



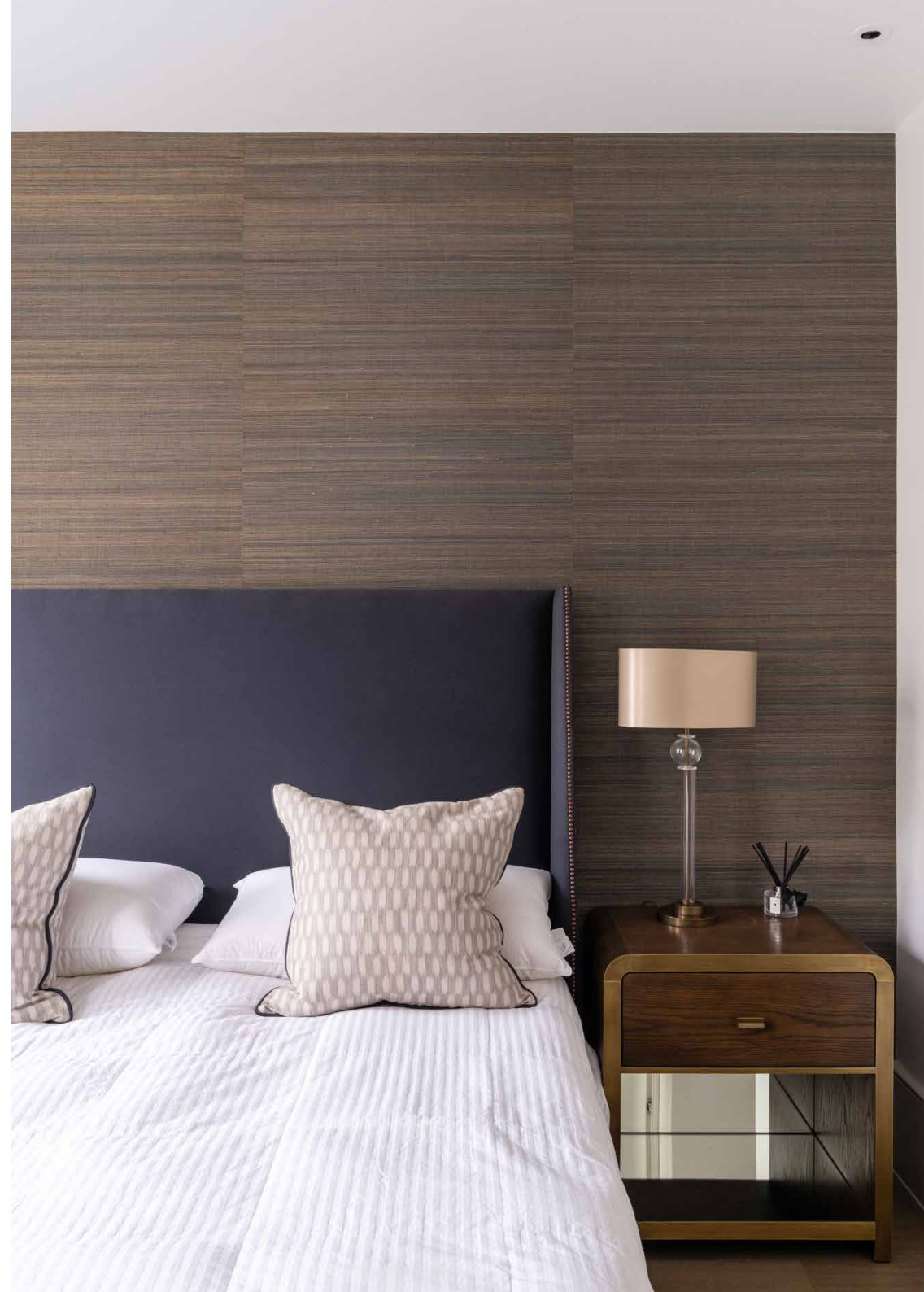




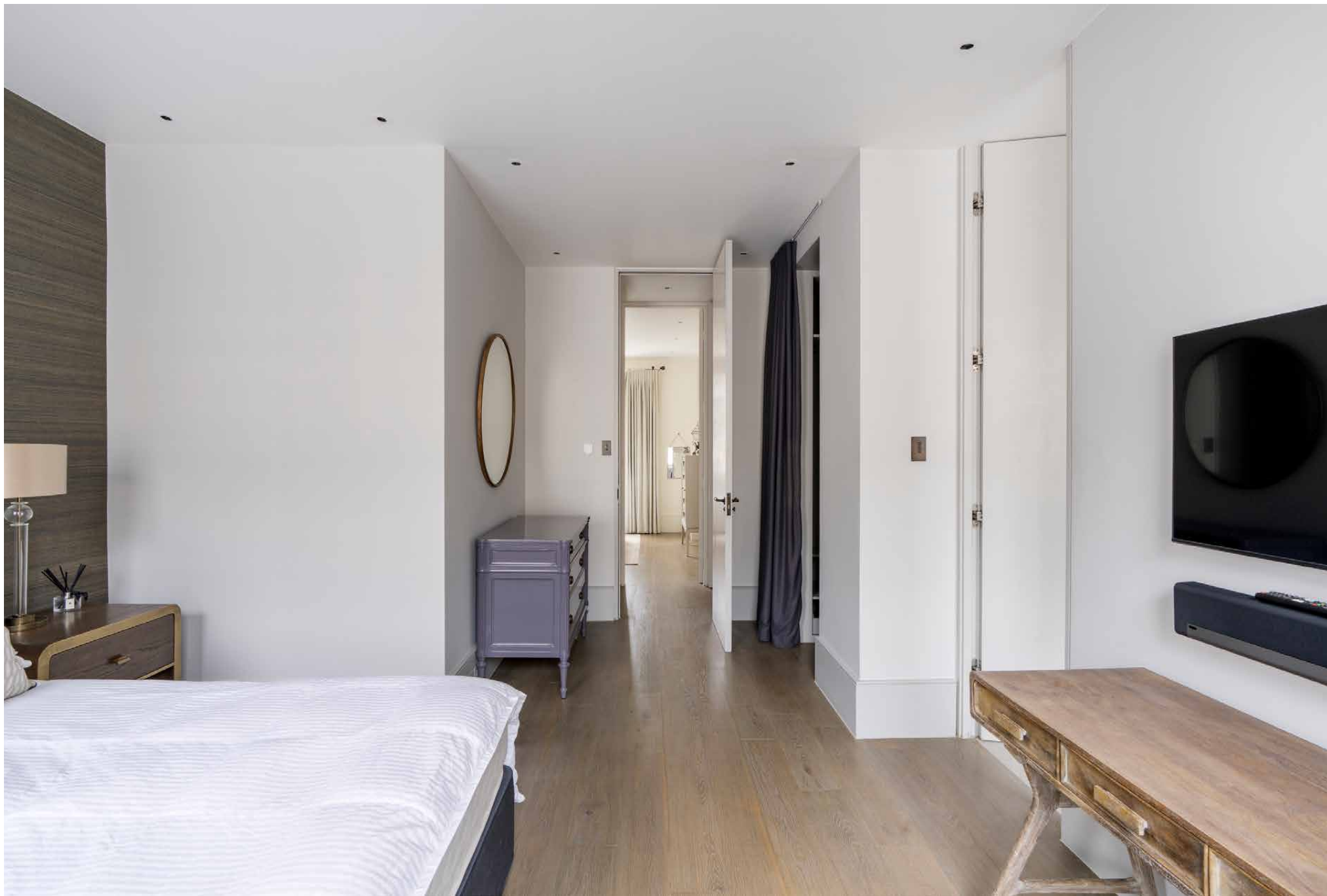




The bedrooms are set on the second level, lending the duplex a natural sense of separation. Both rooms are peaceful and well-sized, with thoughtful storage and soft finishes, while the principal suite enjoys the addition of a walk-in wardrobe. En suite bathrooms serve both bedrooms.

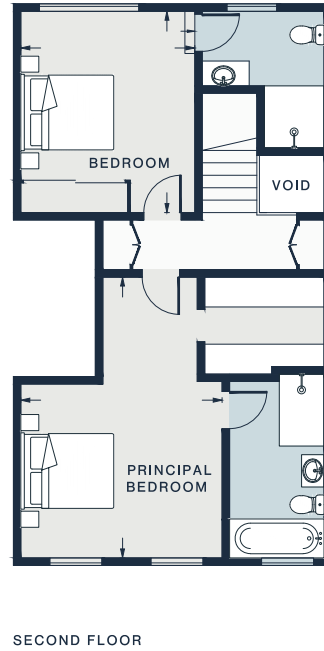
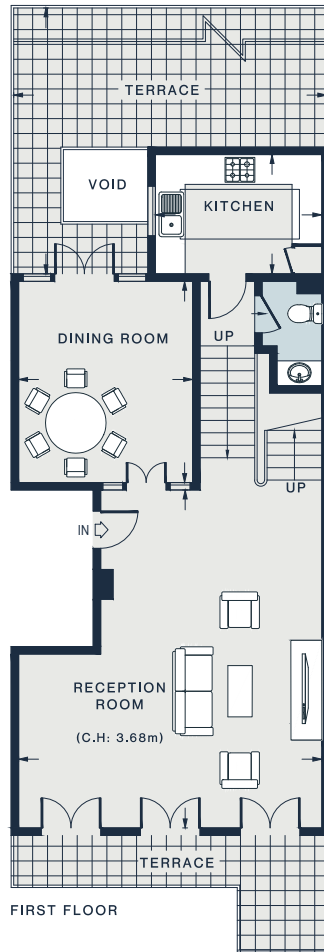












Property Details

- 2 Bedrooms, 2 Bathrooms
- Spacious reception room
- Contemporary kitchen
- Dining room
- Principal bedroom suite with walk-in wardrobe
- Guest bedroom suite with integrated storage
- South-west facing terrace
- Patio garden

Approx. 1,491 sq ft / 138.51 sq m

EPC=C

Deposit . £21,000

Council Tax Band: G

RECEPTION ROOM
22'3 x 20'0 (6.7m x 6.1m)

DINING ROOM
13'4 x 11'5 (4.0m x 3.4m)

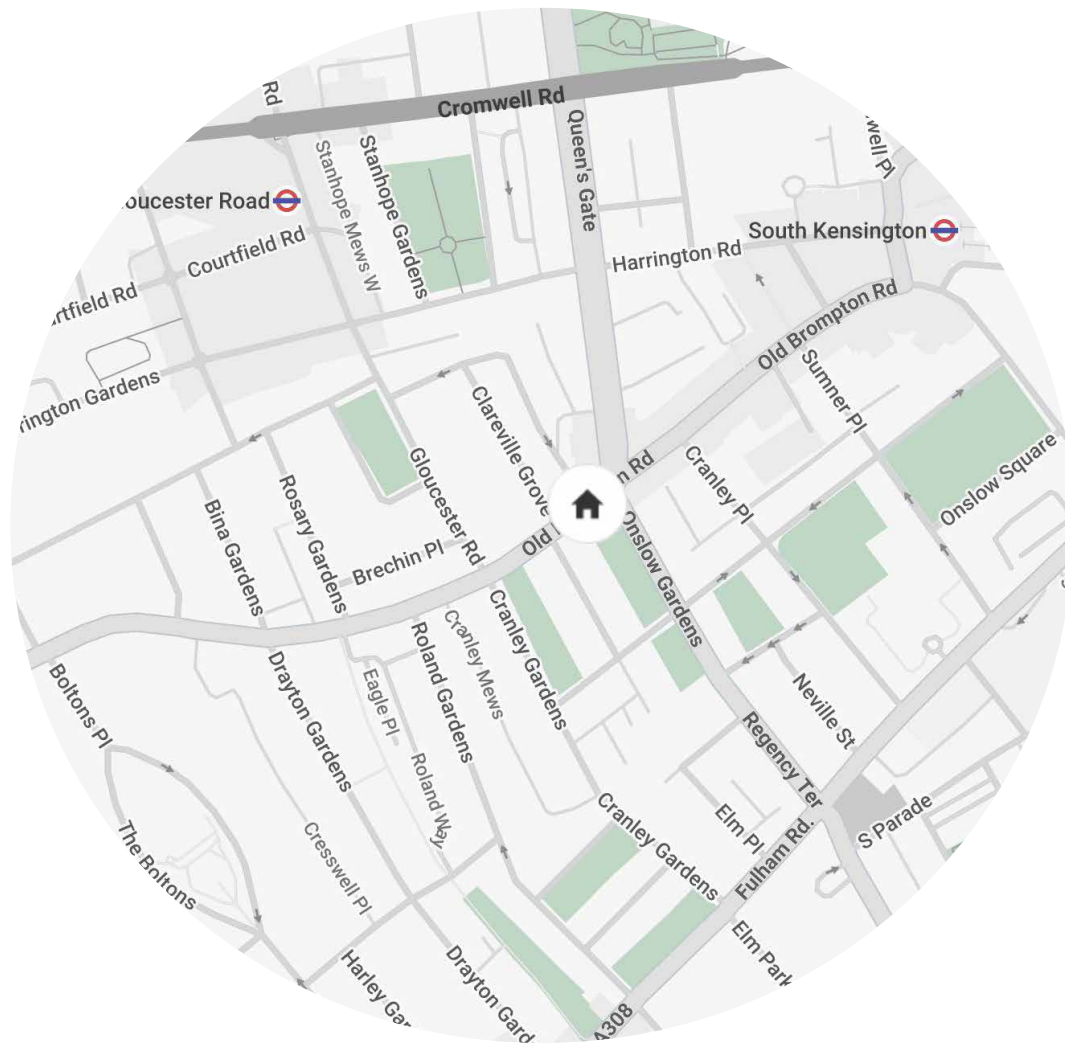
PRINCIPAL BEDROOM
18'6 x 13'3 (5.6m x 4.0m)

KITCHEN
11'0 x 7'10 (3.3m x 2.3m)

TERRACE
25'9 x 21'0 (7.8m x 6.4m)

BEDROOM
13'2 x 11'4 (4.0m x 3.4m)

First Floor = 799 sq ft / 74.23 sq m
Second Floor = 692 sq ft / 64.29 sq m
Total = 1,491 sq ft / 138.51 sq m
(Excluding Void)



Location

Moments from vibrant institutions like the Victoria & Albert Museum and the Natural History Museum, a sense of peace prevails. Grab a coffee to go from HJEM before a stroll around the museums, or head north to Hyde Park. Coveted local restaurants such as Margaux, Yashin Ocean House and Zuma are perfect for get-togethers. For a day of shopping, there's Kensington High Street to the north, Chelsea's iconic Kings Road to the south and the upmarket department stores of Knightsbridge to the east – followed by a performance closer to home at The Royal Albert Hall. Head to The Troubadour for an evening of live music.

Gloucester Road - 7 mins



Who ——— we are

Forward-thinkers in property, design and culture, we're an estate agency that hits refresh.

Domus Nova was born out of a desire to do things differently; to break the traditional agency model and focus on design-led homes in London and Ibiza, all while delivering the highest levels of personal service.

Our story starts in the nineties when we founded Notting Hill's first boutique agency – and we continue to open the doors to the most remarkable spaces, revealing them to our like-minded community.

We want to help you live better – and believe considered design can do that. That's why we remain committed to building on our legacy, in collaboration with BARNES International, an established agency with a market-leading presence in 22 countries.

Uniting our local insight and curated portfolio with BARNES International's expansive reach, we can facilitate the best opportunities in not only London and Ibiza, but also across Europe, the US and further afield – whether that's a château in the South of France, a penthouse in New York, or a chalet in the Swiss Alps.



DOMUS NOVA

Specialising in London
and Ibiza's design-led homes

Let's talk

020 7727 1717

lettings@domusnova.com

The property particulars are a guide not statements. Descriptions, photographs, and plans are for guidance and should be checked by the prospective tenant. The Property is offered "subject to contract and references". No warranties, representations, or Tenancy is given by Domus Nova. Expenses incurred by a prospective tenant will not be reimbursed if the Landlord withdraws prior to the Tenancy Agreement being signed, dated and exchanged and cleared funds received. Furniture and other items shown in a property at viewing may belong to a current tenant. The prospective tenant should verify in writing which fixtures and fittings forms part of the Tenancy. Our full lettings disclaimer together with trading names and our [Privacy Policy](#) is shown on our website

© 2025 Domus Nova in partnership with BARNES International. All rights reserved.

In partnership with
BARNES
INTERNATIONAL REALTY