

DOMUS NOVA



Oakwood Court W14
£2,150,000



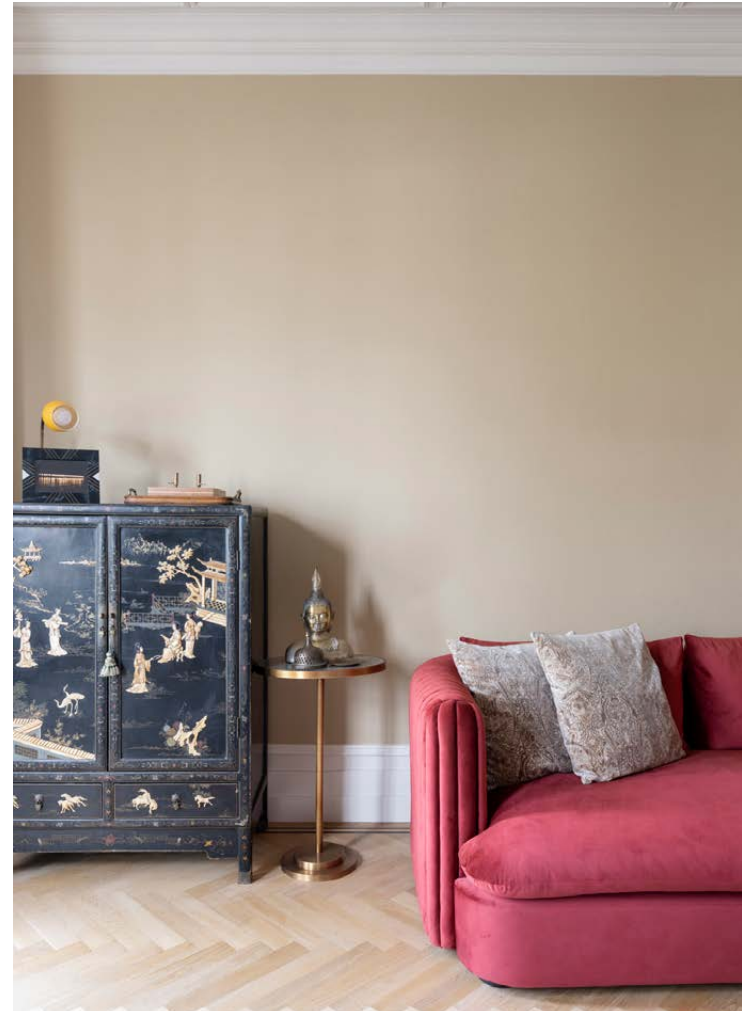
Sophisticated lateral living and a sought-after setting. This two-bedroom apartment for sale updates its timeless framework with inspiring design.

On the leafy borders of Holland Park, Oakwood Court's towering red-brick mansion block makes an imposing first impression. Ascending to the second floor, an abundance of natural light fills this lateral home with an uplifting ambiance.

A design-led backdrop for evenings in or entertaining, a spacious reception room feels curated from every angle. Taking centre stage, an ornate cast-iron fireplace is framed with floor-to-ceiling black cabinets. An intricate coffered ceiling draws attention to the period proportions, flooded with light from a generous bay window. A glass door leads from here to an intimate outdoor area – a small balcony for a breath of fresh air. In a considered separate kitchen, inky tones feature throughout shaker cabinets and antique-style floor tiles. A sash window casts light across curved banquette seating – a relaxed spot to lounge or dine.



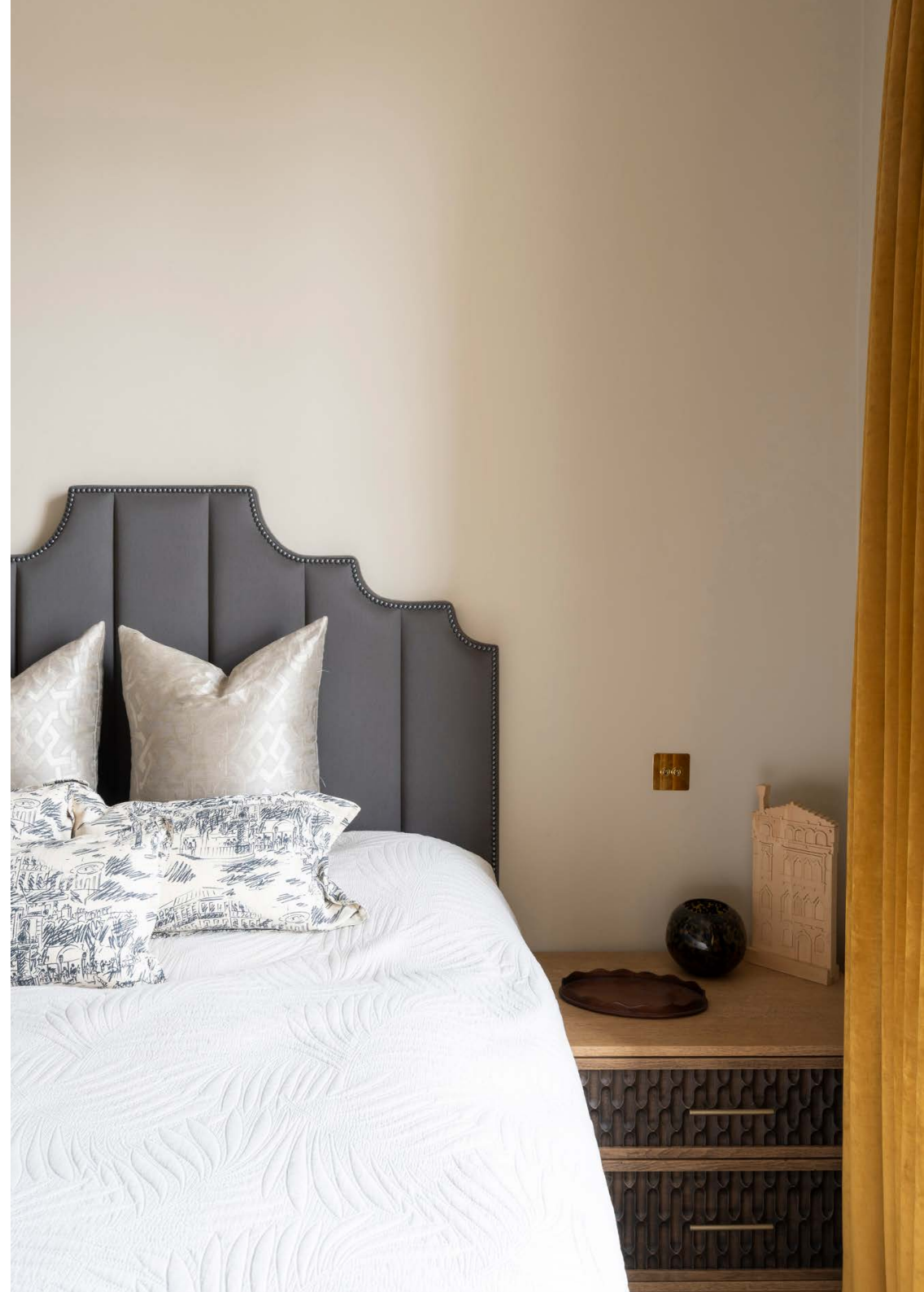






Soothing in its simplicity, the principal bedroom effortlessly calms with a subdued palette of neutral tones. Adding touches of character – a small cast-iron fireplace, cornicing and an original-style column radiator. Muted hues continue into the en suite, where beige metro tiles wrap around a walk-in shower.

Pops of colour enliven the second bedroom, fitted with a black and blue tiled fireplace, plus sleek integrated storage. A large family bathroom – complete with a bathtub and shower – serves this bedroom.

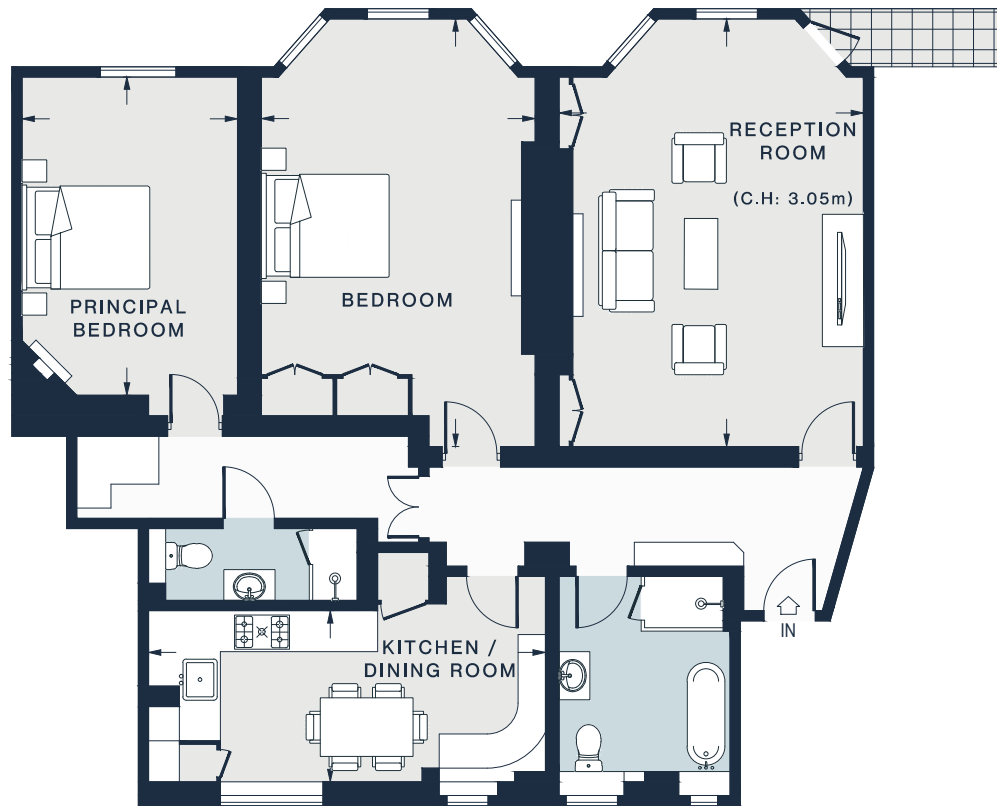












SECOND FLOOR

RECEPTION ROOM
20'7 x 14'8 (6.2m x 4.4m)

PRINCIPAL BEDROOM
15'4 x 10'4 (4.6m x 3.1m)

KITCHEN / DINING
19'1 x 8'3 (5.8m x 2.5m)

BEDROOM
20'7 x 13'2 (6.2m x 4.0m)

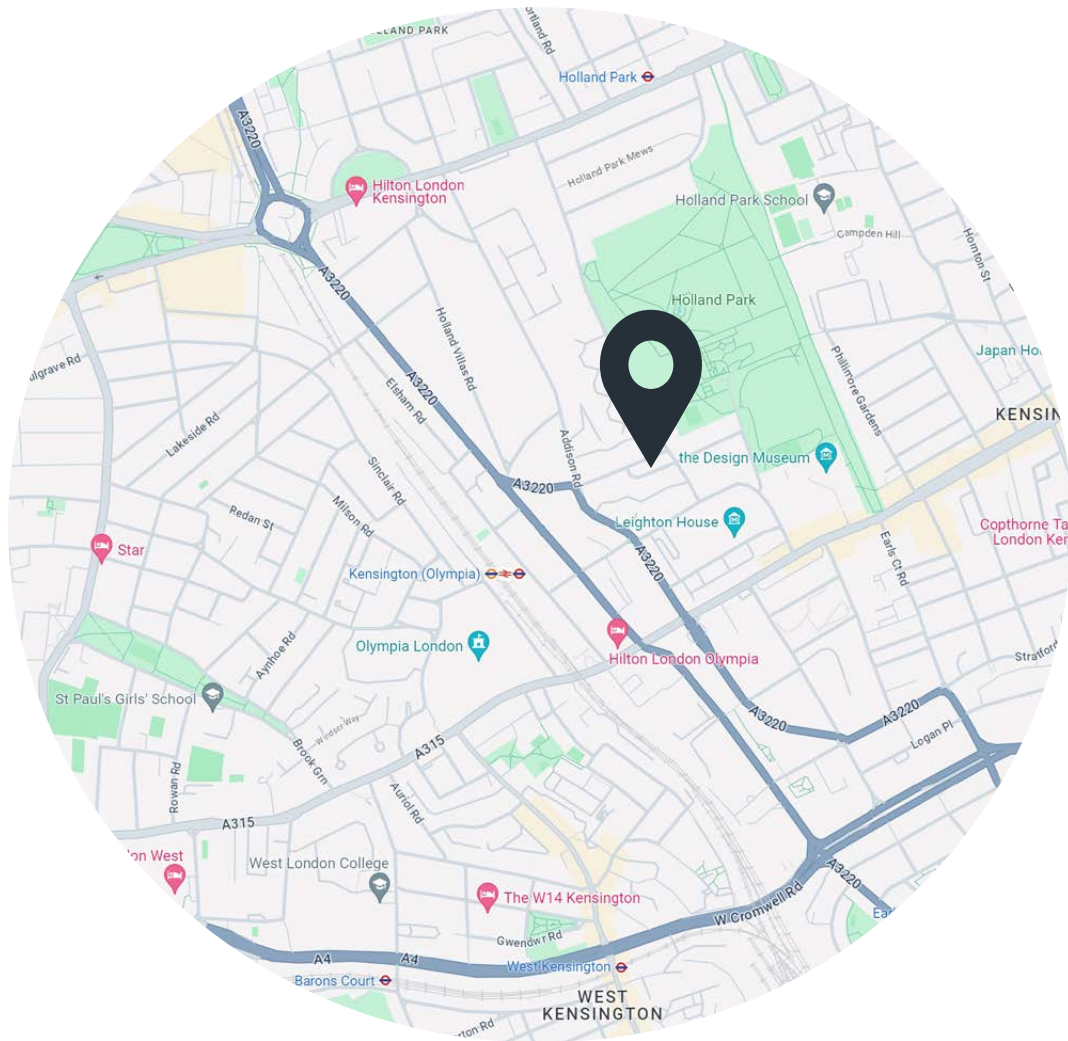
Approx. Gross Internal Area = 1269 sq ft / 117.9 sq m

Floor plans are for illustrative purposes only and not to scale. Compliant with RICS code of measuring practice.

Property Details

Open-plan kitchen and dining room
Reception room
Principal bedroom suite
One further bedroom
Family bathroom
Balcony

Approx. 1,269 sq ft / 118 sq m
EPC - D
Tenure: Leasehold
Lease Length: Circa 113 years
Council Tax Band: G
Service charge: Approx. £6000 pa



Location

On a peaceful street just minutes from Holland Park, Oakwood Court puts you in prime position for exploring west London. Head around the corner to grab a morning coffee from Gail's, then wander the expanse of stores on Kensington High Street. Less than five minutes' walk away, Holland Park and its tranquil Kyoto Garden are your go to for leisurely afternoon strolls. Stop by Belvedere for a taste of South Italy with a Tuscan setting. Just further north, the antique stalls and vintage treasures of Portobello Road are an ideal Saturday outing.

Kensington (Olympia) – 9 mins (District, Overground, Southern)

High Street Kensington – 15 mins (Circle, District)

Holland Park – 15 mins (Central)

Specialising in London
and Ibiza's design-led homes

Let's talk
020 7221 7817
sales@domusnova.com
domusnova.com

The particulars above are a guide, not an offer or contract. Descriptions, photographs and plans are not statements or representations of fact. Measurements are approximate and not to scale. Prospective purchasers must verify the accuracy of the information within the particulars. Domus Nova does not give any representations or warranties; nor represent the Seller legally. Domus Nova has no liability, for any costs, losses or expenses incurred by the Seller or a prospective buyer relating to the sales and buying transaction.

Our Sales Disclaimer, trading names and privacy policy on how your data is processed and used is found in full on our website in our [Privacy Statement](#).

© Domus Nova 2024. All rights reserved.