

DOMUS NOVA

Newton Road

Bayswater W2

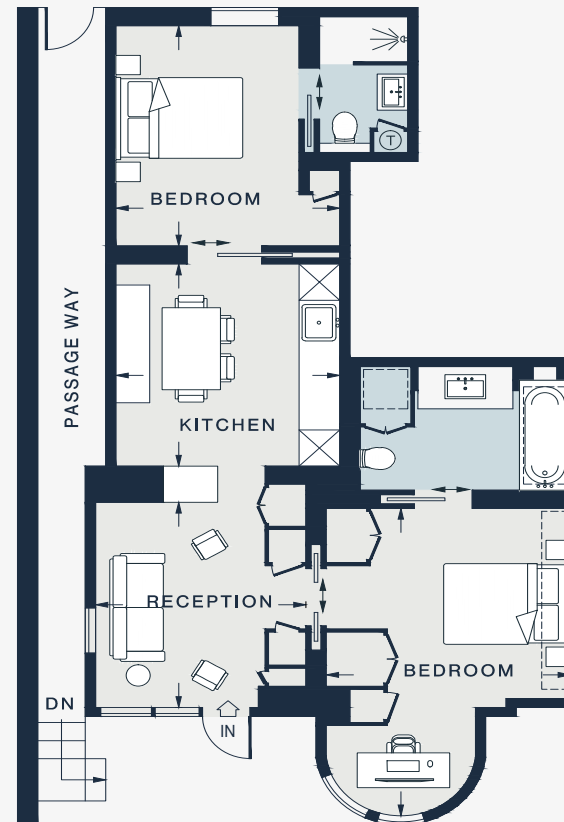
APPROXIMATE GROSS INTERNAL AREA

679 sq ft / 63.1 sq m

020 7727 1717

domusnova.com

LONDON | IBIZA



LOWER GROUND FLOOR

RECEPTION 11'2 x 10'2 (3.4m x 3.1m)	BEDROOM 12'9 x 10'9 (3.6m x 3.2m)
KITCHEN 10'11 x 10'10 (3.3m x 3.3m)	BEDROOM 16'10 x 11'10 (5.1m x 3.6m)

Approx. Gross Internal Area = 679 sq ft / 63.1 sq m

Floor plans are for illustrative purposes only and not to scale. Compliant with RICS code of measuring practice.