

DOMUS NOVA



Mornington Avenue, W14 – £2,100 p/w (SL)

In partnership with **BARNES**
INTERNATIONAL REALTY



Mornington Avenue makes a sophisticated first impression – a uniform terrace of richly toned brickwork, gabled rooflines and ornamental detail that speak to the neighbourhood’s esteemed 19th-century architecture. Set on the raised ground floor of one of these properties, this two-bedroom apartment is a calming, classic-meets-contemporary sanctum.

A spacious reception room commands the front of the flat with poise. Soaring ceilings, decorative corncicing and a broad archway draws the eye through the full depth of the space, while a Carrara marble fireplace with carved corbels creates a cosy focal point for the room – set beneath a silver-leafed mirror.

Oak floorboards run throughout, lending warmth to the pale palette of greys and whites. The bay area – framed by an elegant plaster arch – sets the scene for a grand piano alongside a circular dining table and upholstered chairs, with garden light filtering through tall sash windows.



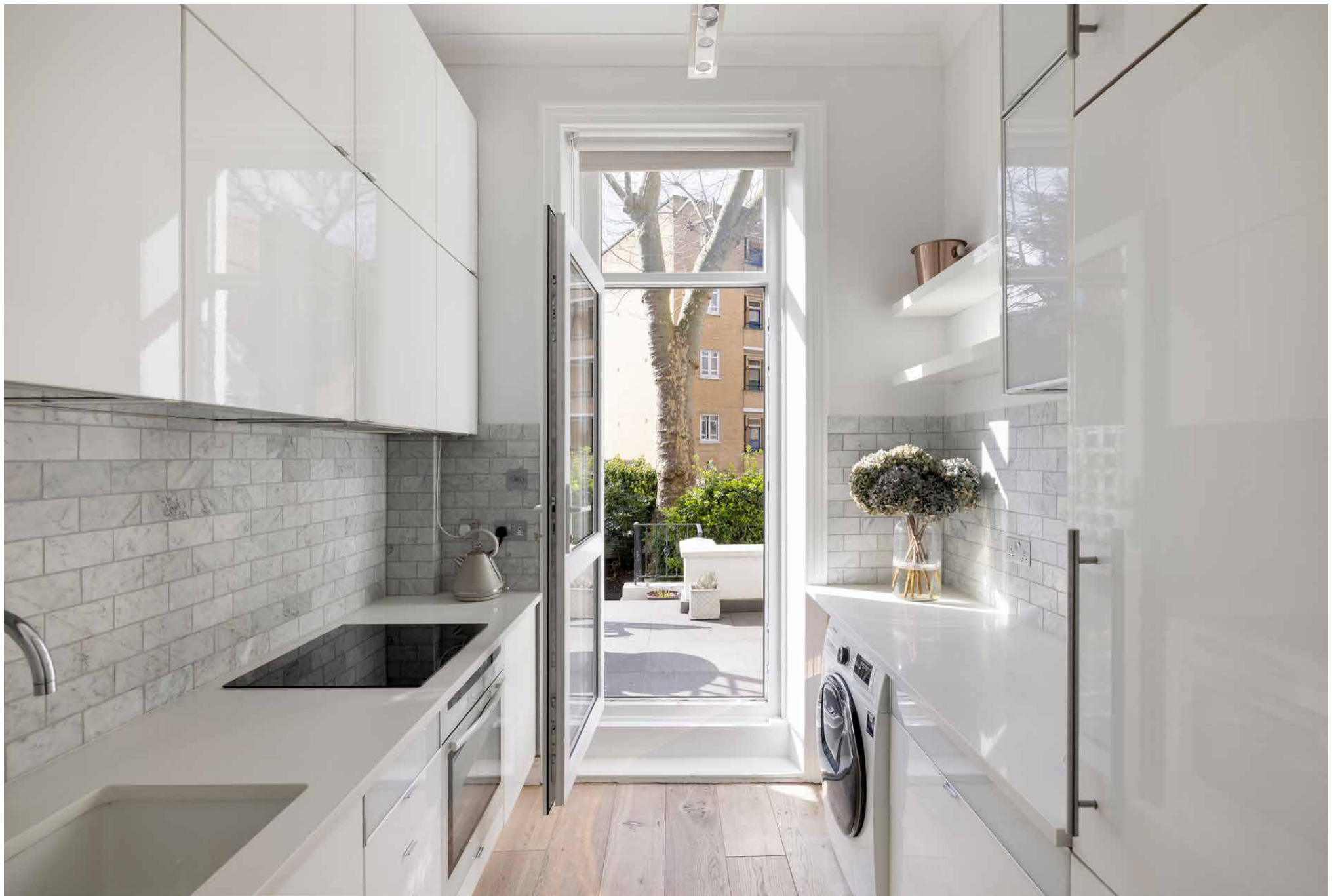




The galley kitchen is streamlined and stylish, featuring high-gloss white cabinetry, marble-effect subway tiling and a clean run of pale stone worktops. At the far end, a door opens directly to the private terrace.

Outside, the garden unfolds in two levels: a raised timber-decked terrace with outdoor dining furniture leads down to a lawned lower garden, enclosed by slatted timber screens and mature planting. Two tranquil bedrooms sit quietly at the rear of the plan. The principal room is all pale tones and reams of natural light filtered through a tall sash window, with the second bedroom maintaining this restrained palette. A modern bathroom completes the home.

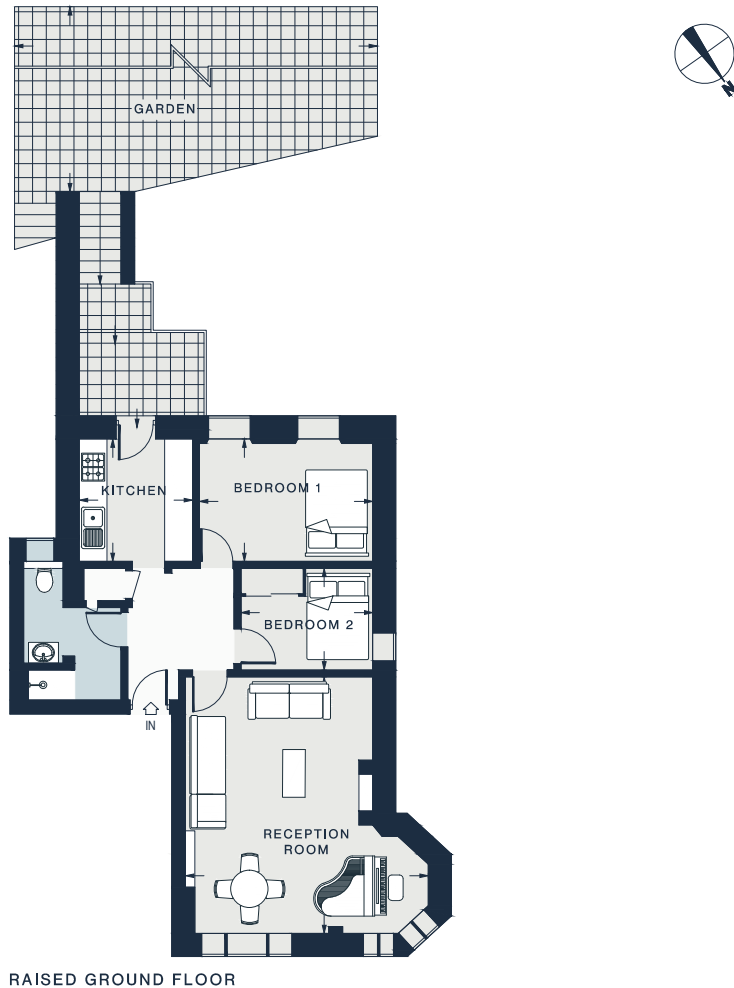












RAISED GROUND FLOOR

RECEPTION ROOM
18'3 x 17'1 (5.5m x 5.2m)

BEDROOM 1
12'4 x 8'9 (3.7m x 2.6m)

KITCHEN
8'9 x 8'0 (2.6m x 2.4m)

BEDROOM 2
9'7 x 7'3 (2.9m x 2.2m)

Approx. Gross Internal Area = 669 sq ft / 62.15 sq m

Floor plans are for illustrative purposes only and not to scale. Compliant with RICS code of measuring practice. Furniture layouts are indicative only. This property may be furnished, part-furnished or unfurnished. Please refer to your agent for details. Prepared for Domus Nova. Copyright © All Rights Reserved.

Property Details

2 bedrooms, 1 bathroom
 Open-plan reception and dining room
 Contemporary kitchen
 Principal bedroom
 Guest bedroom
 One bathroom
 Private garden
 Royal Borough of Hammersmith and Fulham

Approx. 669 sq ft / 62.15 sq m

EPC=D

Deposit: £8,400

Council Tax Band: E



Location

There's a real sense of residential tranquility to Mornington Avenue, yet the hotspots of West Kensington are just moments away. It's a short stroll to High Street Kensington, with its coveted high street brands and Whole Foods for organic groceries; in the other direction, you're in family-friendly Brook Green, with its tennis courts and renowned weekly farmer's market. Kitchen W8's Michelin-starred modern European menu is set for celebratory evenings, while Hammersmith's Lyric Theatre and Eventim Apollo promise an ever-changing roster of music and performance.

West Kensington - 5 mins



Who ——— we are

Forward-thinkers in property, design and culture, we're an estate agency that hits refresh.

Domus Nova was born out of a desire to do things differently; to break the traditional agency model and focus on design-led homes in London and Ibiza, all while delivering the highest levels of personal service.

Our story starts in the nineties when we founded Notting Hill's first boutique agency – and we continue to open the doors to the most remarkable spaces, revealing them to our like-minded community.

We want to help you live better – and believe considered design can do that. That's why we remain committed to building on our legacy, in collaboration with BARNES International, an established agency with a market-leading presence in 22 countries.

Uniting our local insight and curated portfolio with BARNES International's expansive reach, we can facilitate the best opportunities in not only London and Ibiza, but also across Europe, the US and further afield – whether that's a château in the South of France, a penthouse in New York, or a chalet in the Swiss Alps.



DOMUS NOVA

Specialising in London
and Ibiza's design-led homes

Let's talk

020 7727 1717

lettings@domusnova.com

The property particulars are a guide not statements. Descriptions, photographs, and plans are for guidance and should be checked by the prospective tenant. The Property is offered "subject to contract and references". No warranties, representations, or Tenancy is given by Domus Nova. Expenses incurred by a prospective tenant will not be reimbursed if the Landlord withdraws prior to the Tenancy Agreement being signed, dated and exchanged and cleared funds received. Furniture and other items shown in a property at viewing may belong to a current tenant. The prospective tenant should verify in writing which fixtures and fittings forms part of the Tenancy. Our full lettings disclaimer together with trading names and our [Privacy Policy](#) is shown on our website

© 2025 Domus Nova in partnership with BARNES International. All rights reserved.

In partnership with
BARNES
INTERNATIONAL REALTY