

DOMUS NOVA

Monmouth Road

Bayswater W2

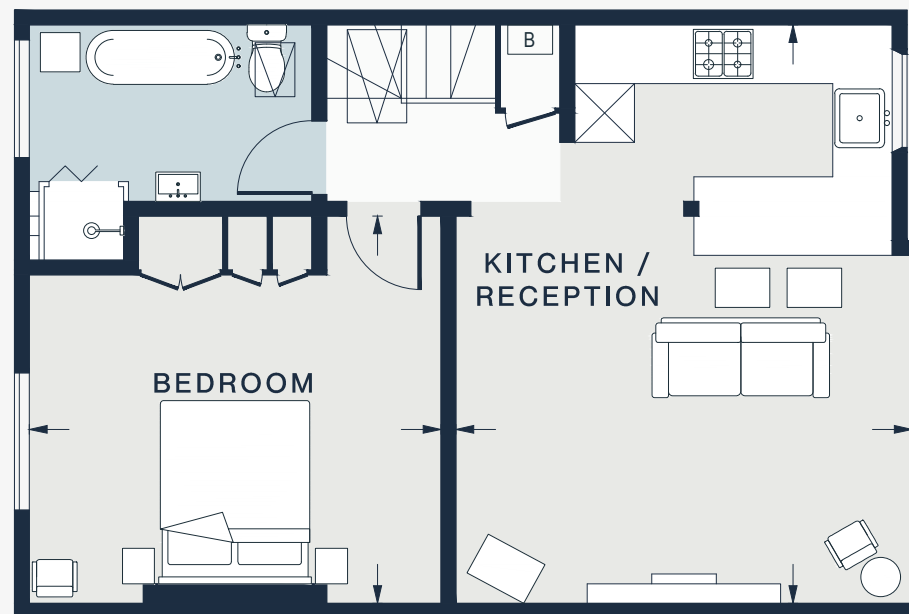
APPROXIMATE GROSS INTERNAL AREA

579 sq ft / 53.8 sq m

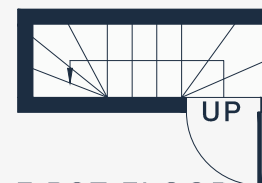
020 7727 1717

domusnova.com

LONDON | IBIZA



SECOND FLOOR



FIRST FLOOR

KITCHEN /
RECEPTION

19'3 x 15'1 (5.8m x 4.6m)

BEDROOM

13'7 x 13'0 (4.1m x 3.9m)

Approx. Gross Internal Area = 579 sq ft / 53.8 sq m

Floor plans are for illustrative purposes only and not to scale. Compliant with RICS code of measuring practice. Furniture layouts are indicative only. This property may be furnished, part-furnished or unfurnished. Please refer to your agent for details.