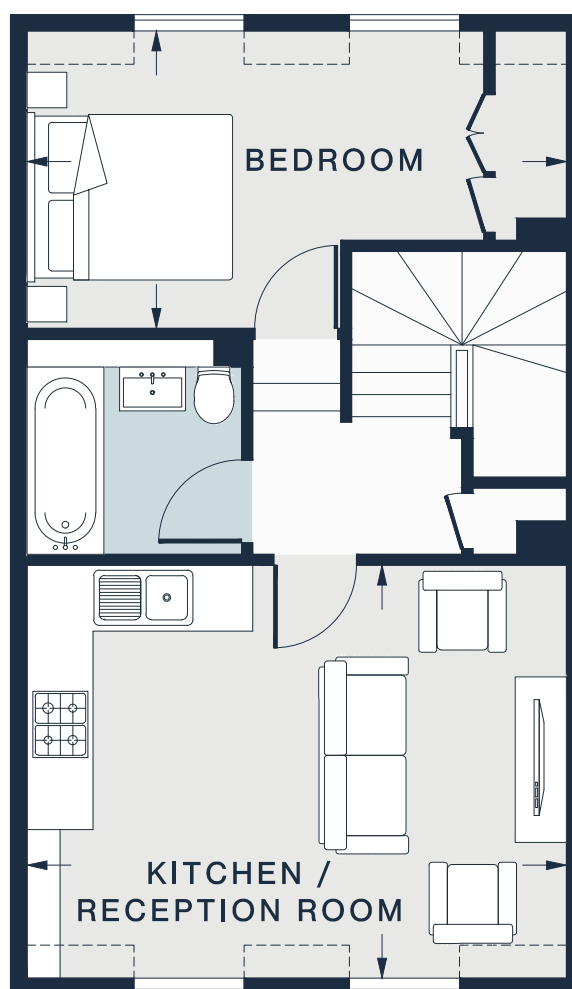
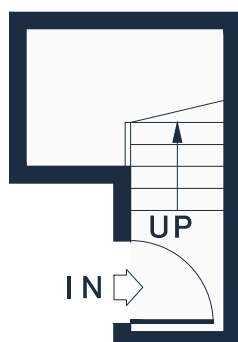
 = Reduced head height below 1.5m



### THIRD FLOOR

### FOURTH FLOOR

#### KITCHEN / RECEPTION ROOM

15'11 x 12'4 (4.8m x 3.7m)

#### BEDROOM

16'1 x 8'10 (4.9m x 2.7m)

Approx. Gross Internal Area = 487.6 sq ft / 45.3 sq m

Floor plans are for illustrative purposes only and not to scale. Compliant with RICS code of measuring practice.  
Furniture layouts are indicative only. This property may be furnished, part-furnished or unfurnished. Please refer to your agent for details.  
Prepared for Domus Nova. Copyright © All Rights Reserved.