

# DOMUS NOVA

Monmouth Place

Notting Hill W2

APPROXIMATE GROSS INTERNAL AREA

906 sq ft / 84 sq m

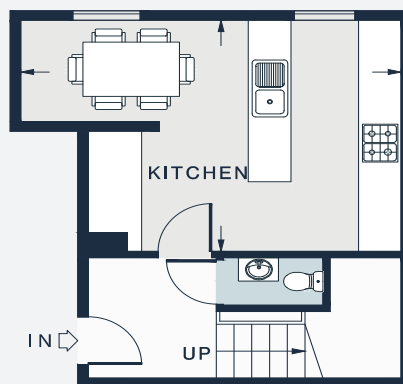
020 7727 1717

domusnova.com

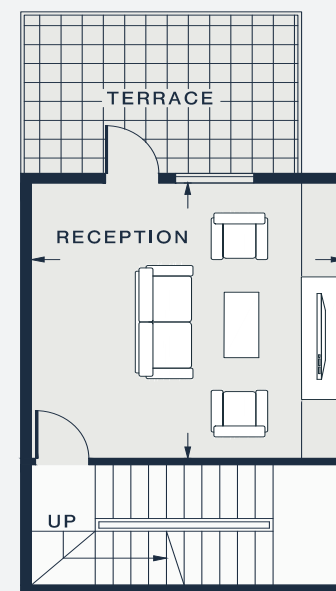
LONDON | IBIZA



THIRD FLOOR



FIRST FLOOR



SECOND FLOOR

RECEPTION  
14'7 x 14'3 (4.4m x 4.3m)

KITCHEN  
17'7 x 12'1 (5.3m x 3.6m)

BEDROOM  
11'8 x 11'5 (3.5m x 3.4m)

Floor plans are for illustrative purposes only and not to scale. Compliant with RICS code of measuring practice. Furniture layouts are indicative only. This property may be furnished, part-furnished or unfurnished. Please refer to your agent for details.