

DOMUS NOVA

Macroom Road

Queens Park W9

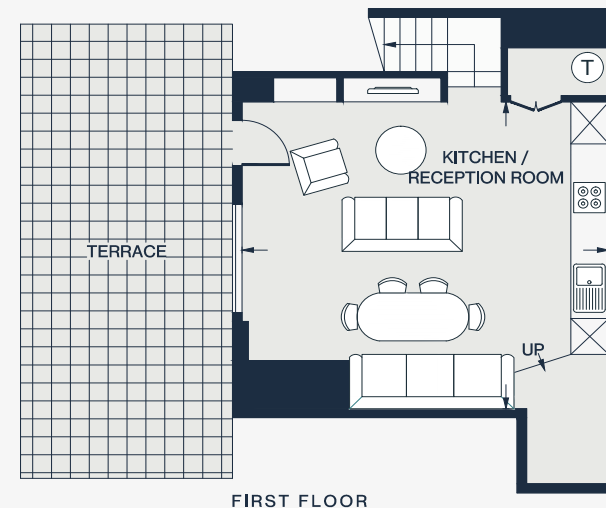
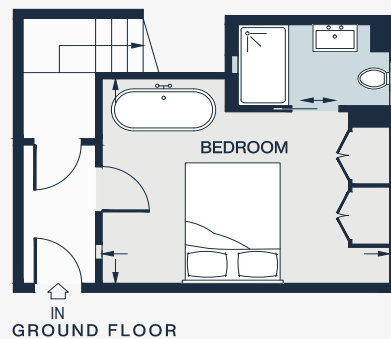
APPROXIMATE GROSS INTERNAL AREA

651 sq ft / 60.5 sq m

020 7727 1717

domusnova.com

LONDON | IBIZA



BEDROOM

14'9 x 11'2 (4.5m x 3.4m)

KITCHEN /
RECEPTION

19'7 x 16'10 (6.0m x 5.1m)

Approx. Gross Internal Area = 651 sq ft / 60.5 sq m

Floor plans are for illustrative purposes only and not to scale. Compliant with RICS code of measuring practice. Furniture layouts are indicative only. This property may be furnished, part-furnished or unfurnished. Please refer to your agent for details.