

DOMUS NOVA



Lower Northend Cottage, Buckinghamshire - £7,000 p/w (SL)

In partnership with **BARNES**
INTERNATIONAL REALTY



A long gravel drive draws you towards Lower North End Cottage, a thatched roofline softening its silhouette against the countryside. Set within expansive grounds, the house feels thoughtfully positioned – a rural setting with views that stretch far beyond the garden's edge.

Inside, bucolic interiors strike a calming chord. Exposed beams and a working fireplace anchor the reception room, where soft green walls temper the weight of the architecture. French doors open directly onto the terrace, framing views of the gardens and landscape.

The kitchen and dining area occupy the ground floor's other half. A merge of old and new unfolds in the kitchen: a Wolf range cooker and clean-lined cabinetry sit opposite an impressive antique oak haberdashery cabinet. A large island ensures plenty of storage space, with appliances neatly integrated. Pale pink walls brighten the dining room – complete with an intricately carved fireplace and seamless access to the outdoors. Here, a patio is primed for long summer lunches soaking up the setting, with lawn and open countryside unfolding just beyond.







“A merge of old and new unfolds in the kitchen: a Wolf range cooker and clean-lined cabinetry sit opposite an impressive antique oak cabinet.







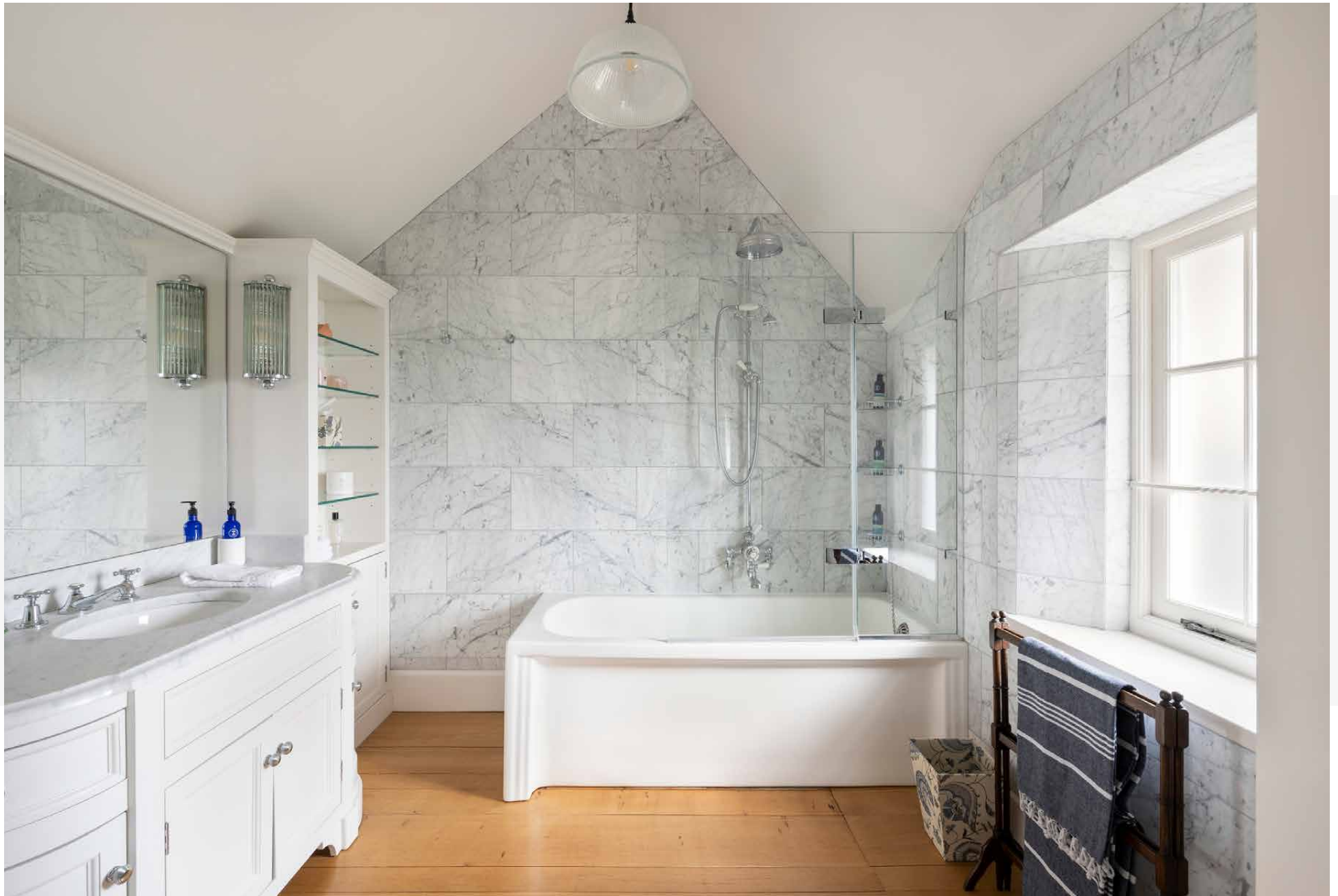


Upstairs, bedrooms are arranged with a sense of separation and calm. The principal suite pairs generous proportions with soft decorative detail – a vaulted ceiling, patterned wallpaper and views across the surrounding fields. Two further bedrooms take on their own character through colour and fabric, served by a soft sage family bathroom with a rolltop tub.

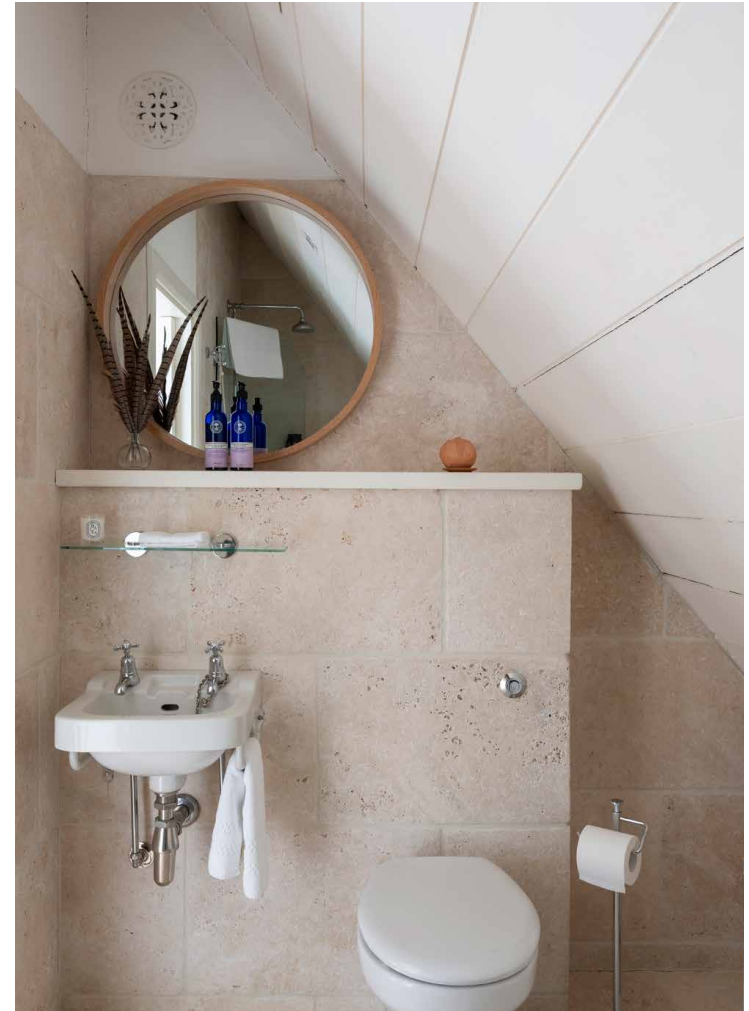
Elsewhere, a fourth and final bedroom serves as a self-contained studio space. Alongside a generous vaulted bedroom with a sofa and seating space, a kitchenette and en suite shower room.





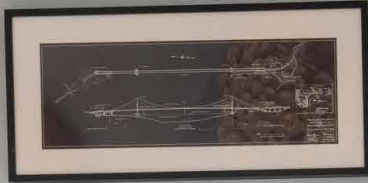


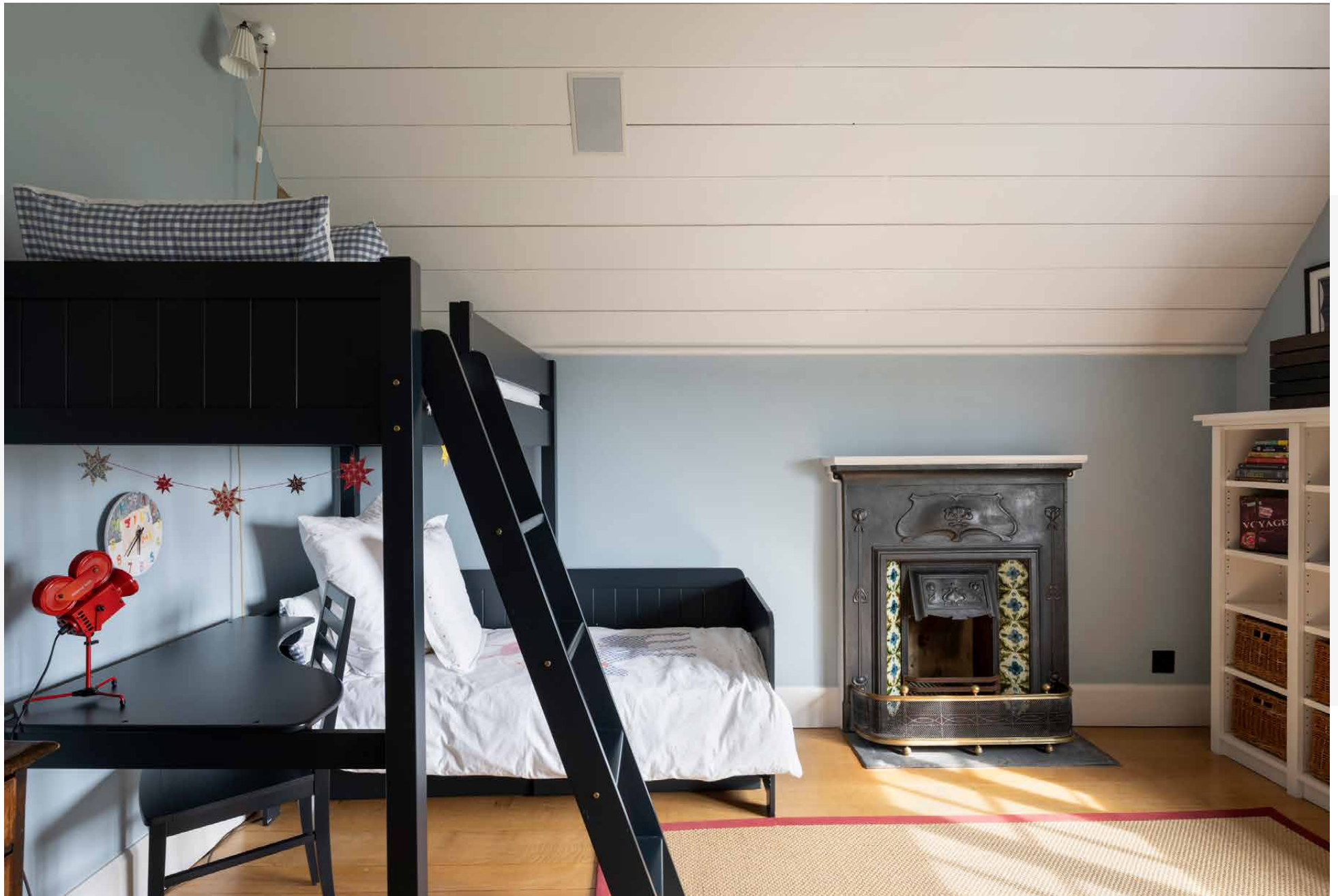
















Basement = 210 sq ft / 19.5 sq m
Ground Floor = 1,287 sq ft / 119.6 sq m
First Floor = 1,186 sq ft / 110.2 sq m
Outbuilding = 499 sq ft / 46.4 sq m
Approx. Gross Internal Area = 3,182 sq ft / 295.7 sq m

Property Details

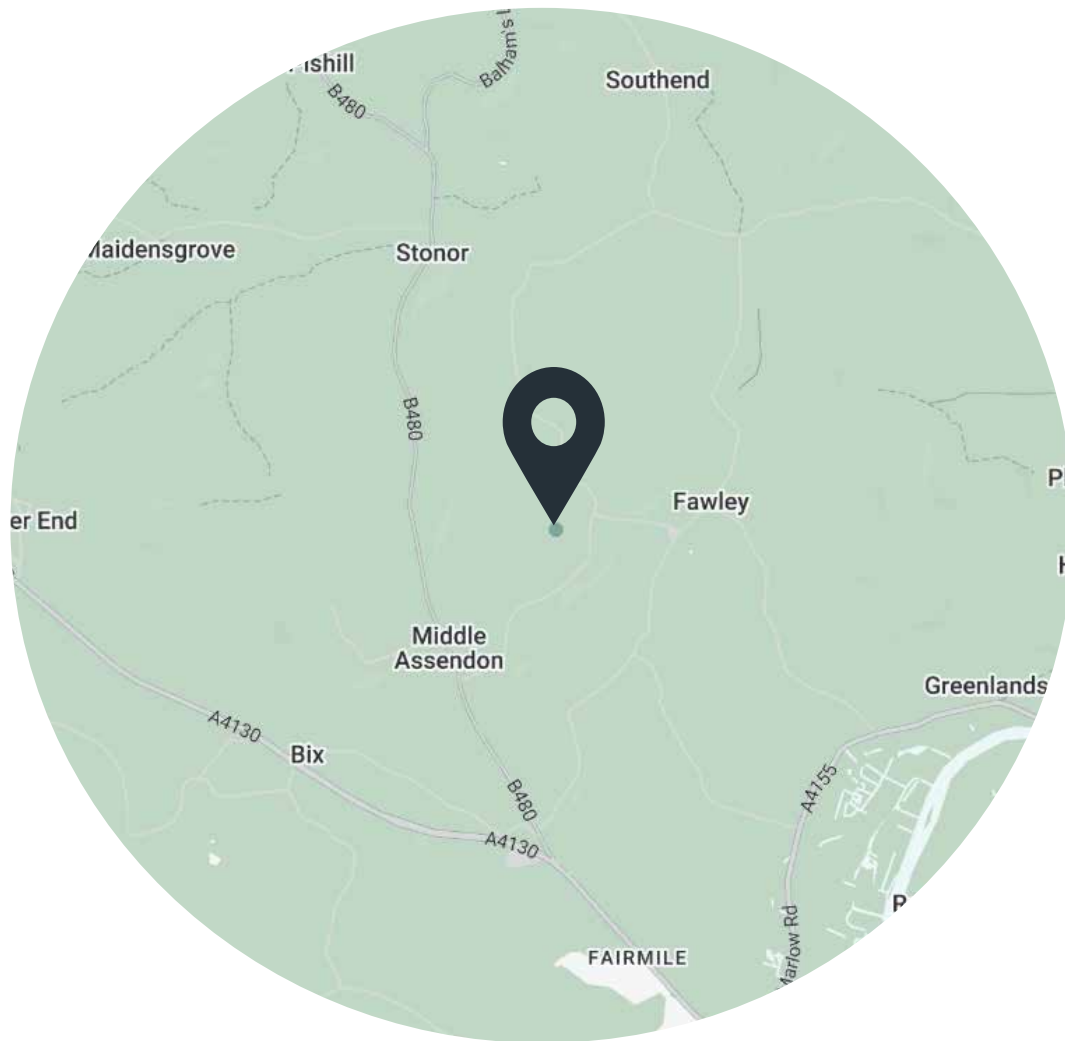
- 4 Bedrooms, 3 Bathrooms
- Open-plan kitchen and dining room
- Spacious sitting room
- Principal bedroom suite
- Two guest bedrooms
- Family bathroom
- Self-contained studio with kitchenette and en suite
- Landscaped garden
- Utility room
- Porter

Approx. 3,182 sq ft / 295.7 sq m

EPC=C

Deposit: £28,000 (SL)

Council Tax Band: Ask Agent



Location

Set within the rolling folds of the Chiltern Hills, Wormsley balances rural seclusion with easy access into London and beyond. This stretch of Buckinghamshire is defined by open countryside and long views – a landscape shaped for walking, cycling and slower weekends. The estate is a privately owned expanse of parkland known for its cricket ground, gardens and summer opera performances. Closer to home, Marlow and Henley-on-Thames provide a wider offering of shops, cafés and restaurants. Despite its rural setting, connectivity is straightforward. The nearby M40 links directly to London and Oxford, placing the countryside within comfortable reach of the city.

Central London – 1.5 hrs

Oxford – 35 mins



Who ——— we are

Forward-thinkers in property, design and culture, we're an estate agency that hits refresh.

Domus Nova was born out of a desire to do things differently; to break the traditional agency model and focus on design-led homes in London and Ibiza, all while delivering the highest levels of personal service.

Our story starts in the nineties when we founded Notting Hill's first boutique agency – and we continue to open the doors to the most remarkable spaces, revealing them to our like-minded community.

We want to help you live better – and believe considered design can do that. That's why we remain committed to building on our legacy, in collaboration with BARNES International, an established agency with a market-leading presence in 22 countries.

Uniting our local insight and curated portfolio with BARNES International's expansive reach, we can facilitate the best opportunities in not only London and Ibiza, but also across Europe, the US and further afield – whether that's a château in the South of France, a penthouse in New York, or a chalet in the Swiss Alps.



DOMUS NOVA

Specialising in London
and Ibiza's design-led homes

Let's talk

020 7727 1717

lettings@domusnova.com

The property particulars are a guide not statements. Descriptions, photographs, and plans are for guidance and should be checked by the prospective tenant. The Property is offered "subject to contract and references". No warranties, representations, or Tenancy is given by Domus Nova. Expenses incurred by a prospective tenant will not be reimbursed if the Landlord withdraws prior to the Tenancy Agreement being signed, dated and exchanged and cleared funds received. Furniture and other items shown in a property at viewing may belong to a current tenant. The prospective tenant should verify in writing which fixtures and fittings forms part of the Tenancy. Our full lettings disclaimer together with trading names and our [Privacy Policy](#) is shown on our website

© 2025 Domus Nova in partnership with BARNES International. All rights reserved.

In partnership with
BARNES
INTERNATIONAL REALTY