

# DOMUS NOVA



Lonsdale Road, W11  
£825,000



Tucked along a row of pastel-hued townhouses in the heart of Notting Hill, this first-floor apartment makes a graceful impression from the outset. Behind a sage-green stucco façade, Lonsdale Road is newly renovated and thoughtfully curated for modern city living.

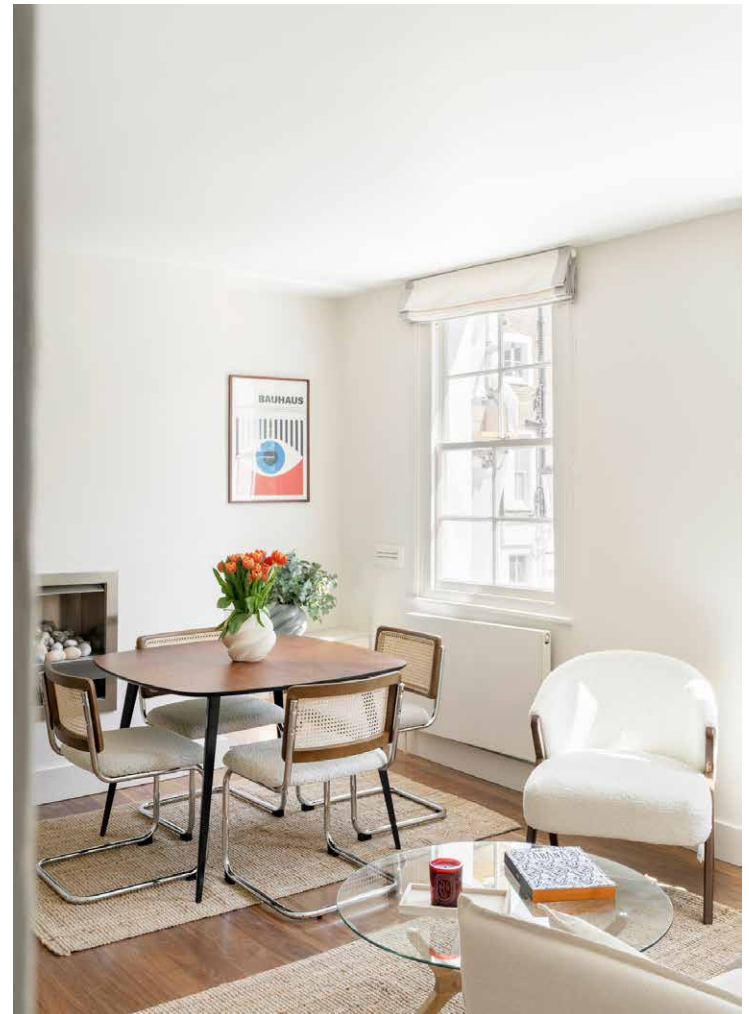
Inside, sunlight filters through twin sash windows, casting soft light across deep wooden floors. The reception room feels effortlessly composed: warm white walls, a recessed fireplace, and an open-plan layout that encourages easy flow. Clarity in design continues through the neighbouring kitchen: from the shaker-style cabinetry and crisp metro tiles to the wood countertops.

A tranquil palette ensues through two softly styled bedrooms, each enjoying natural light and discreet built-in storage. The shower room is a subtle highlight – clad in Zellige-style tiles and wrapped in Farrow & Ball tones.

















“ Clarity in design continues through the neighbouring kitchen: from the shaker-style cabinetry and crisp metro tiles to the wood countertops.



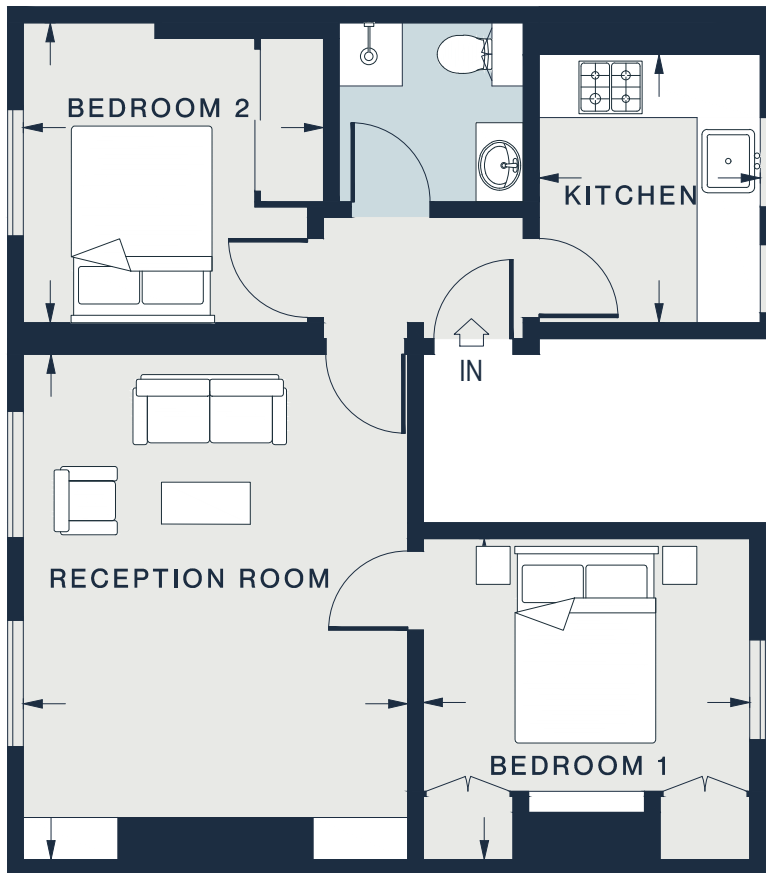












## FIRST FLOOR

RECEPTION ROOM  
15'8 x 12'0 (4.7m x 3.6m)

KITCHEN  
8'3 x 6'11 (2.5m x 2.1m)

BEDROOM 2  
9'3 x 9'1 (2.8m x 2.7m)

BEDROOM 1  
10'2 x 10'0 (3.1m x 3.0m)

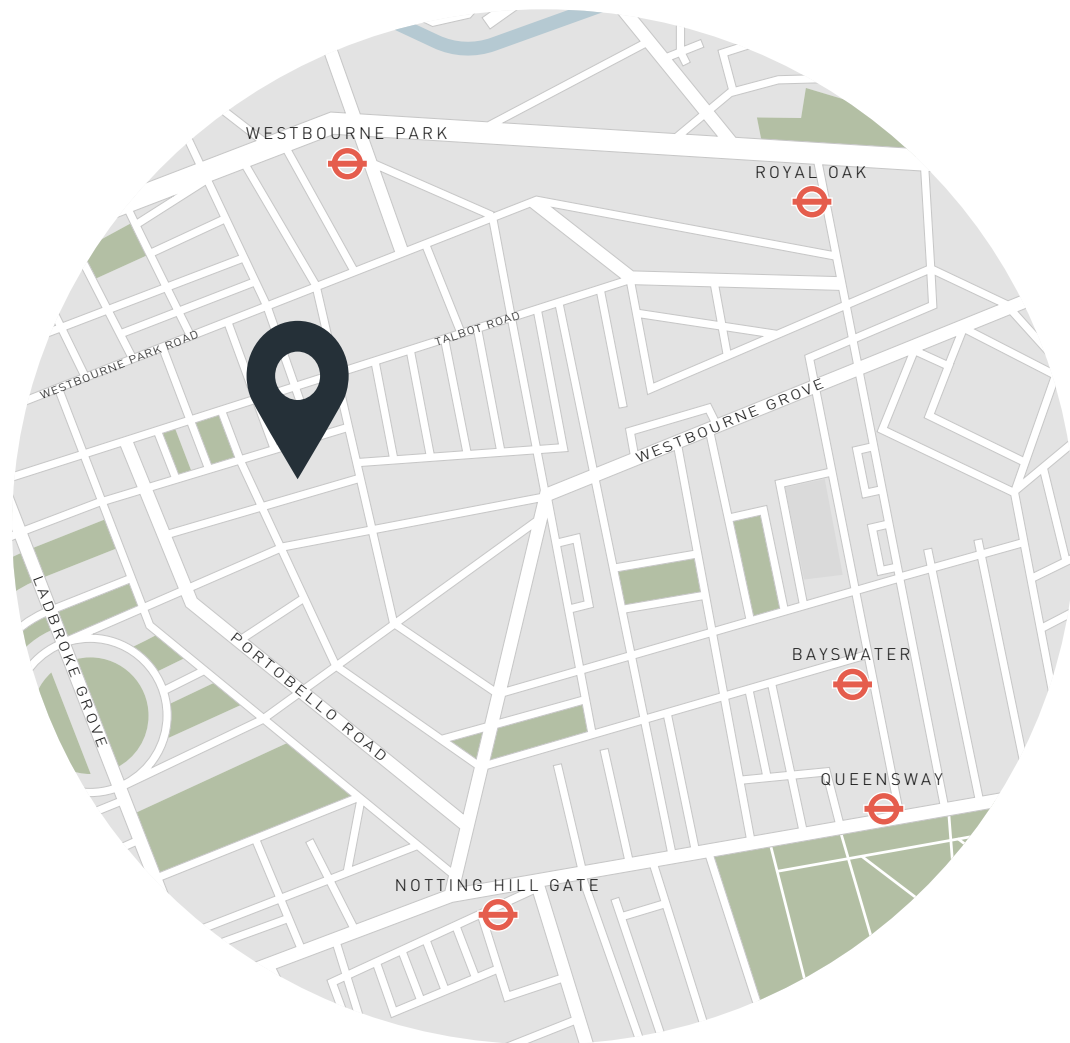
Approx. Gross Internal Area = 515 sq ft / 47.8 sq m

Floor plans are for illustrative purposes only and not to scale. Compliant with RICS code of measuring practice.  
Prepared for Domus Nova. Copyright © All Rights Reserved.

## Property Details

Open-plan dining and reception room  
Contemporary kitchen  
Principal bedroom with bespoke storage  
Guest bedroom  
Shower room  
Royal Borough of Kensington & Chelsea

Approx. 515 sq ft / 47.8 sq m  
EPC=D  
Tenure: Share of Freehold  
Lease Length: circa. 946 years  
Council Tax Band: D



## Location

At the intersection of Bayswater and Notting Hill, this stretch of Westbourne Grove is populated by upscale cafés and boutiques. Ease into the day with coffee or clean juice from Daylesford, a personal training session at Bodyism or brunch at Beam. Then stock up on essentials at Waitrose or Planet Organic. In ten minutes, you could be strolling the Italian Gardens near Kensington Palace or browsing the vintage stalls along Portobello Road. Head to the Barbary for dinner followed by a nightcap at The Princess Royal and be home in no time at all.

Notting Hill Gate - 11 mins (Central, Circle, District)

Specialising in London  
and Ibiza's design-led homes

Let's talk  
020 7221 7817  
sales@domusnova.com  
domusnova.com

The particulars above are a guide, not an offer or contract. Descriptions, photographs and plans are not statements or representations of fact. Measurements are approximate and not to scale. Prospective purchasers must verify the accuracy of the information within the particulars. Domus Nova does not give any representations or warranties; nor represent the Seller legally. Domus Nova has no liability, for any costs, losses or expenses incurred by the Seller or a prospective buyer relating to the sales and buying transaction.

Our Sales Disclaimer, trading names and privacy policy on how your data is processed and used is found in full on our website in our [Privacy Statement](#).

© Domus Nova 2025. All rights reserved.