

# DOMUS NOVA



Linden Gardens W2  
£2,500 p/w - Short Let



Impressive volumes and an abundance of natural light characterise this two-bedroom apartment for rent.

Set on the ground floor of a quintessential Notting Hill townhouse, there's a distinguished feel to this period apartment, recently refurbished with contemporary sensibility. Original features and a 3.4-metre-high ceiling elevate the kitchen and reception room – a sweeping, open-plan space of generous proportions. Large sash windows bookend the room, facing east and west, ensuring a steady stream of natural light throughout the day.

To one side, a wall of fitted cabinetry keeps the seating area streamlined. To the other, a shaker-style kitchen has a polished finish, complete with dark cabinetry, marble worktops and smart parquet flooring. An in-built banquet and island give options for dining, depending on the occasion.

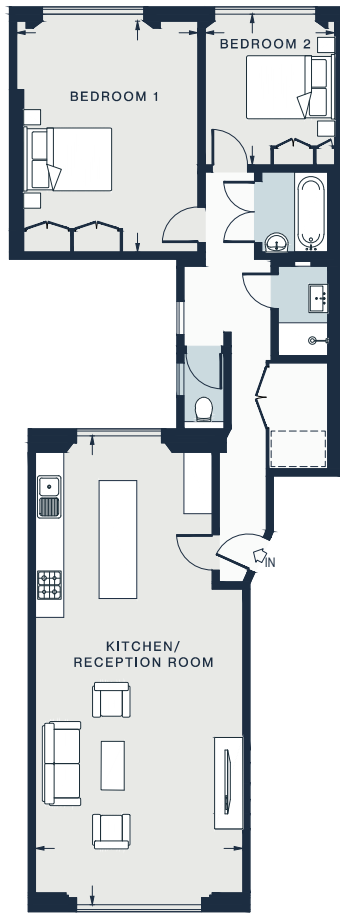












GROUND FLOOR

KITCHEN / RECEPTION  
32'4 x 14'5 (9.8m x 4.3m)

BEDROOM 1  
16'4 x 12'8 (4.9m x 3.8m)

BEDROOM 2  
10'5 x 9'1 (3.1m x 2.7m)

Approx. Gross Internal Area = 976 sq ft / 90.7 sq m

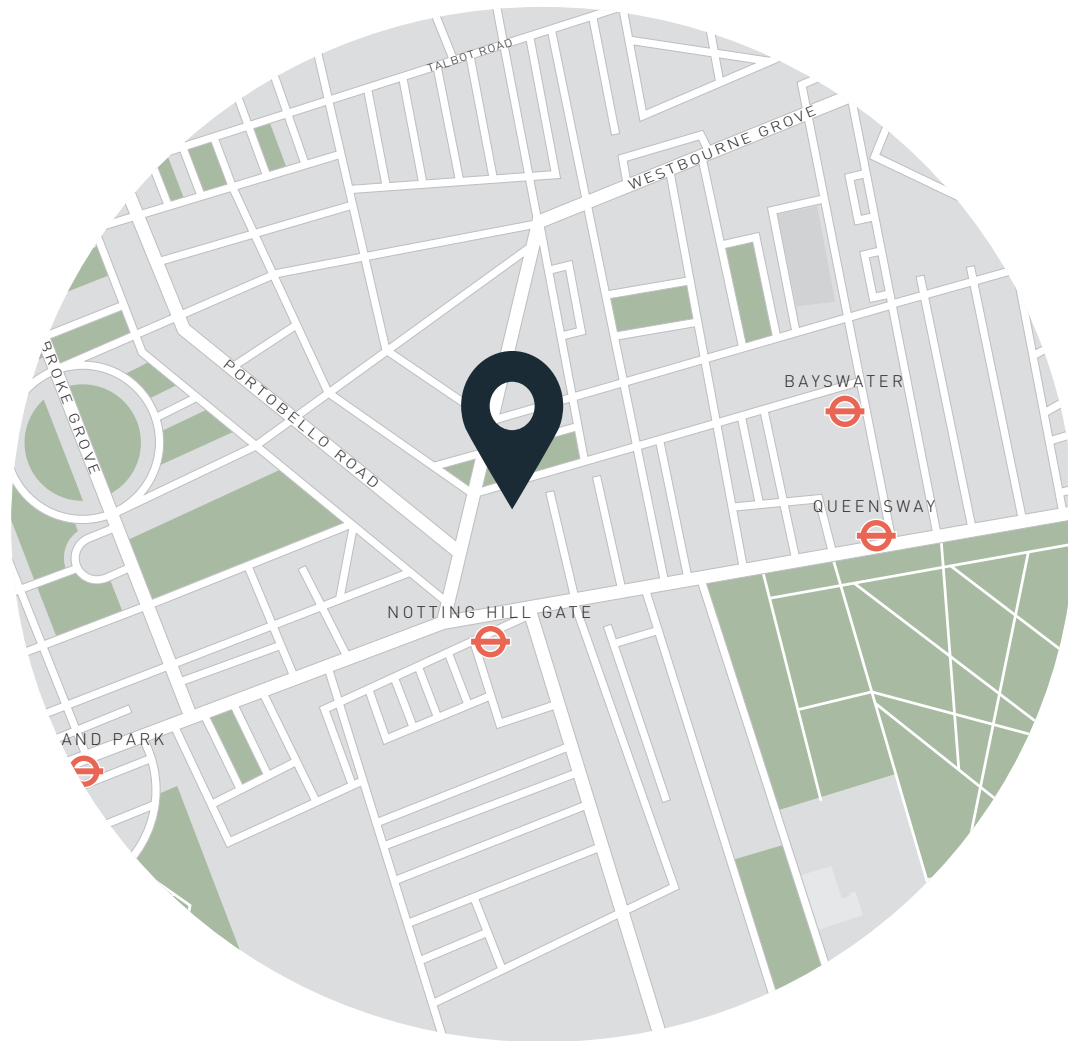
Floor plans are for illustrative purposes only and not to scale. Compliant with RICS code of measuring practice.

## Property Details

Open-plan reception room and kitchen  
Principal bedroom  
Guest bedroom  
Bathroom  
Shower room  
Separate WC  
Royal Borough of Kensington & Chelsea

Approx. 976 sq ft / 90 sq m  
EPC - C  
Deposit - £10,000





## Location

A stone's throw from Notting Hill Gate, West London is your oyster at Linden Gardens. Mornings here start with a run in Kensington Gardens followed by coffee from Kuro. Hit Portobello Road before the weekend crowds for brunch at Farm Girl and a browse of the market stalls. Peruse the latest releases at Daunt Books or explore the Serpentine Gallery – both in easy reach of your front door. In the evening, choose between local favourites Mazi and Gold for dinner, or head to The Hillgate for drinks.

Notting Hill Gate – 4 mins (Central, District & Circle)

Specialising in London  
and Ibiza's design-led homes

Let's talk  
020 7221 7817  
sales@domusnova.com  
domusnova.com

The particulars above are a guide, not an offer or contract. Descriptions, photographs and plans are not statements or representations of fact. Measurements are approximate and not to scale. Prospective purchasers must verify the accuracy of the information within the particulars. Domus Nova does not give any representations or warranties; nor represent the Seller legally. Domus Nova has no liability, for any costs, losses or expenses incurred by the Seller or a prospective buyer relating to the sales and buying transaction.

Our Sales Disclaimer, trading names and privacy policy on how your data is processed and used is found in full on our website in our [Privacy Statement](#).

© Domus Nova 2024. All rights reserved.