

DOMUS NOVA

Linden Gardens

Notting Hill W2

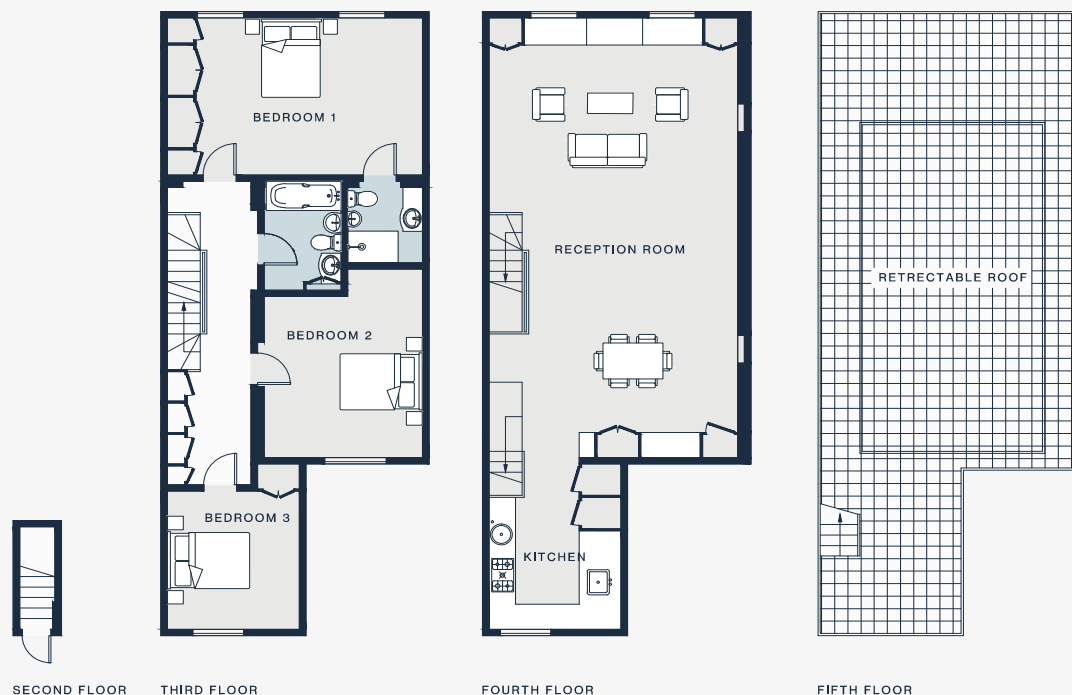
APPROXIMATE GROSS INTERNAL AREA

1,621 sq ft / 151 sq m

020 7727 1717

domusnova.com

LONDON | IBIZA



RECEPTION ROOM
34'6 x 19'4 (10.5m x 5.9m)

BEDROOM 2
14'9 x 11'9 (4.5m x 3.6m)

KITCHEN
15'5 x 10'0 (4.7m x 3.0m)

BEDROOM 1
19'1 x 12'4 (5.8m x 3.7m)

BEDROOM 3
10'10 x 9'10 (3.3m x 3.0m)

Approx. Gross Internal Area = 1582 sq ft / 147.0 sq m

Floor plans are for illustrative purposes only and not to scale. Compliant with RICS code of measuring practice. Furniture layouts are indicative only. This property may be furnished, part-furnished or unfurnished. Please refer to your agent for details.