

DOMUS NOVA

Linden Gardens

Bayswater W2

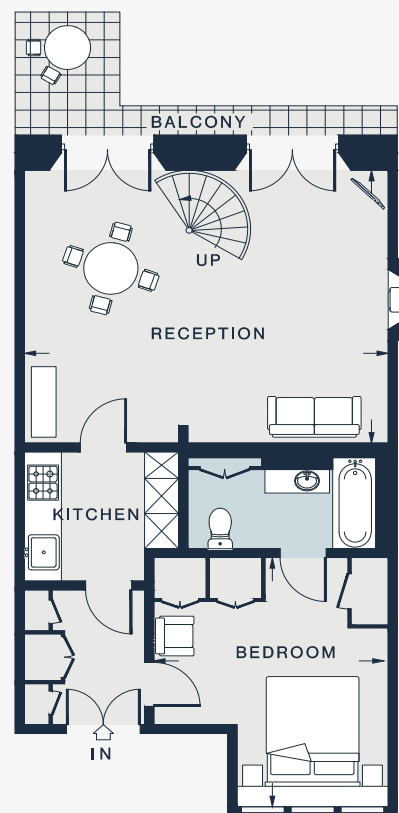
APPROXIMATE GROSS INTERNAL AREA

978 sq ft / 90.9 sq m

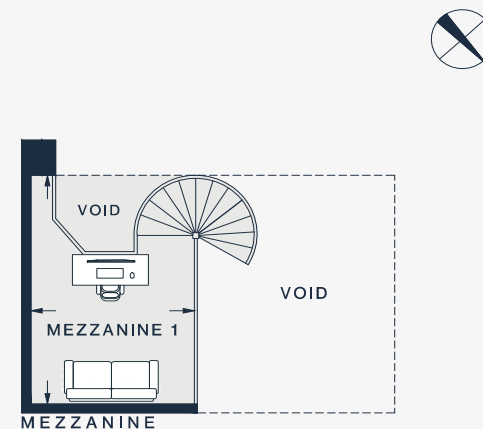
020 7727 1717

domusnova.com

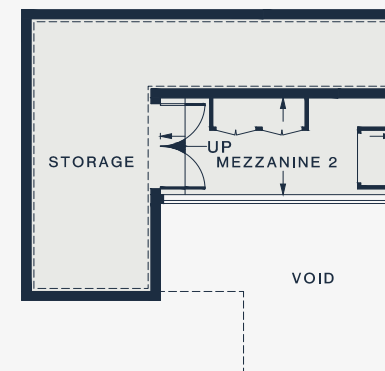
LONDON | IBIZA



FIRST FLOOR



MEZZANINE



MEZZANINE

RECEPTION

19'4 x 15'4 (5.8m x 4.6m)

KITCHEN

8'2 x 7'3 (2.5m x 2.2m)

BEDROOM

13'11 x 12'6 (4.2m x 3.8m)

MEZZANINE 1

12'10 x 8'10 (3.9m x 2.6m)

MEZZANINE 2

12'6 x 5'5 (3.8m x 1.6m)

Approx. Gross Internal Area = 978 sq ft / 90.9 sq m

Floor plans are for illustrative purposes only and not to scale. Compliant with RICS code of measuring practice. Furniture layouts are indicative only. This property may be furnished, part-furnished or unfurnished. Please refer to your agent for details.