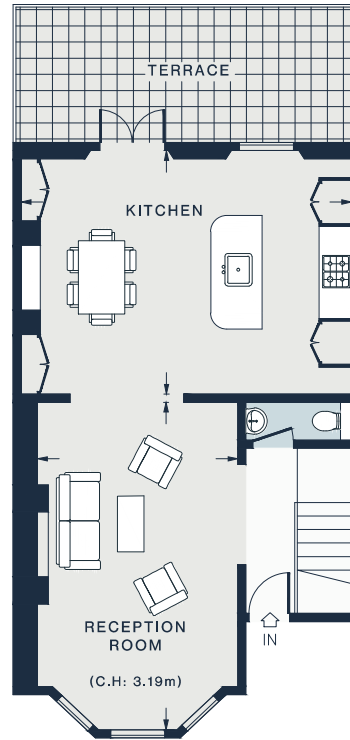


LOWER GROUND FLOOR



RAISED GROUND FLOOR

RECEPTION ROOM
19'10 x 12'4 (6.0m x 3.7m)

KITCHEN
19'11 x 14'9 (6.0m x 4.4m)

BEDROOM 3
12'2 x 10'6 (3.7m x 3.2m)

BEDROOM 1
16'0 x 12'2 (4.8m x 3.7m)

BEDROOM 2
14'7 x 10'3 (4.4m x 3.1m)

Approx. Gross Internal Area = 1,618 sq ft / 150.3 sq m

Floor plans are for illustrative purposes only and not to scale. Compliant with RICS code of measuring practice.