

DOMUS NOVA

Lansdowne Walk

Notting Hill W11

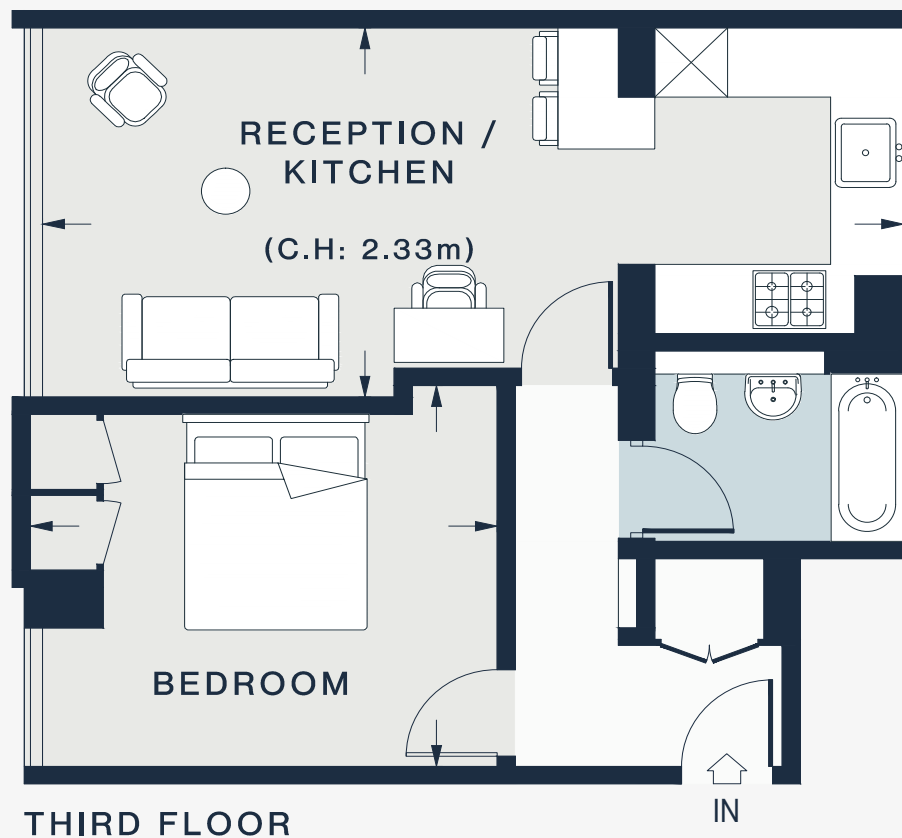
APPROXIMATE GROSS INTERNAL AREA

469 sq ft / 43.6 sq m

020 7727 1717

domusnova.com

LONDON | IBIZA



THIRD FLOOR

RECEPTION / KITCHEN

23'4 x 10'6 (7.1m x 3.1m)

BEDROOM

12'8 x 10'10 (3.8m x 3.2m)

Approx. Gross Internal Area = 469 sq ft / 43.6 sq m

Floor plans are for illustrative purposes only and not to scale. Compliant with RICS code of measuring practice. Furniture layouts are indicative only. This property may be furnished, part-furnished or unfurnished. Please refer to your agent for details.