

DOMUS NOVA

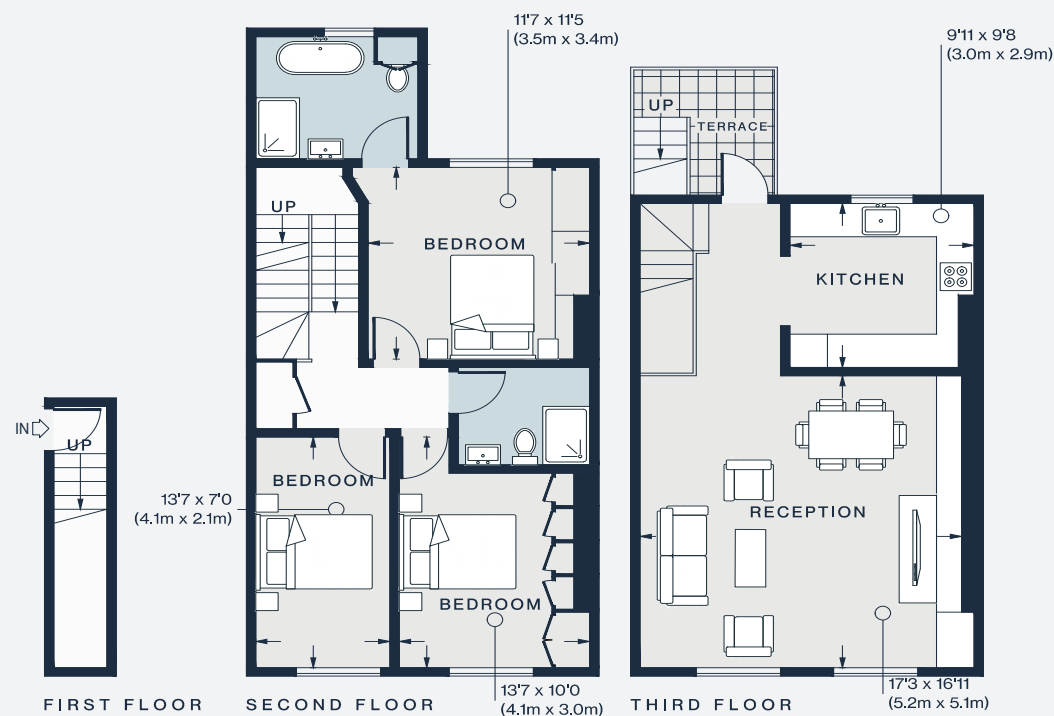


Lancaster Road

Notting Hill W11

APPROXIMATE GROSS INTERNAL AREA

1,108 sq ft / 103 sq m



020 7727 1717

domusnova.com

LONDON | IBIZA

Approx. Gross Internal Area = 1,108 sq ft / 103 sq m

Floor plans are for illustrative purposes only and not to scale. Compliant with RICS code of measuring practice. Furniture layouts are indicative only. This property may be furnished, part-furnished or unfurnished. Please refer to your agent for details.