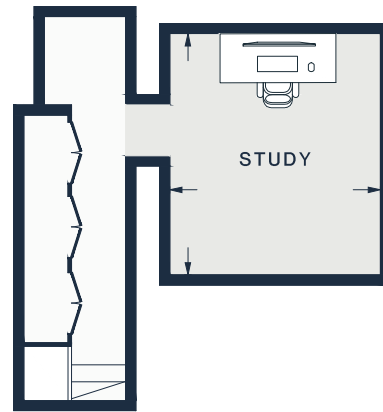


GROUND FLOOR



MEZZANINE

RECEPTION /  
DINING ROOM/ KITCHEN  
21'7 x 19'8 (6.5m x 3.6m)

BEDROOM  
12'8 x 11'9 (3.8m x 3.5m)

STUDY  
10'1 x 5'6 (3.5m x 3.0m)

Approx. Gross Internal Area = 930 sq ft / 86.4 sq m

Floor plans are for illustrative purposes only and not to scale. Compliant with RICS code of measuring practice.  
Prepared for Domus Nova. Copyright © All Rights Reserved.