

DOMUS NOVA



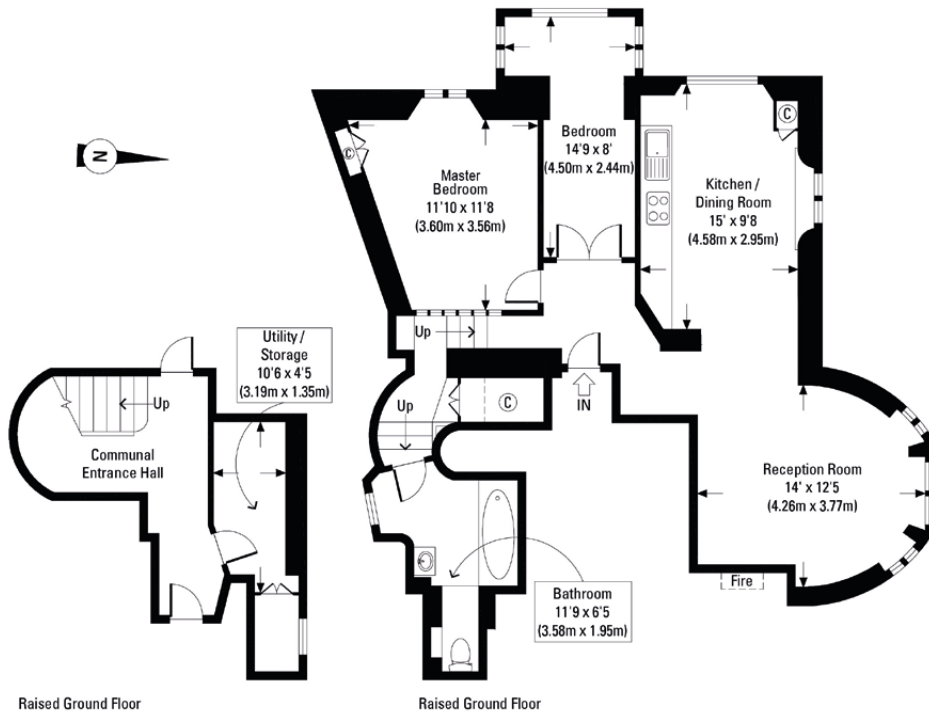
Ladbroke Grove W11
£1,600 p/w Short Let

Spread across the raised ground floor of a stucco-fronted townhouse, its façade has the hallmarks of period architecture; Georgian columns, high ceilings and sash windows that make the most of light and space. Its interiors are thoroughly contemporary, with clean lines and minimalist furnishings. Bay windows overlooking a leafy garden and whitewashed floors affords a welcoming brightness to the open-plan reception room, which leads seamlessly to the galley kitchen. An example of stylish simplicity, with jet-black granite counters, integrated appliances and glossy storage. Back in the adjoining reception space, cast-iron radiators and an electric fireplace add a sense of warmth and comfort to the understated aesthetic.









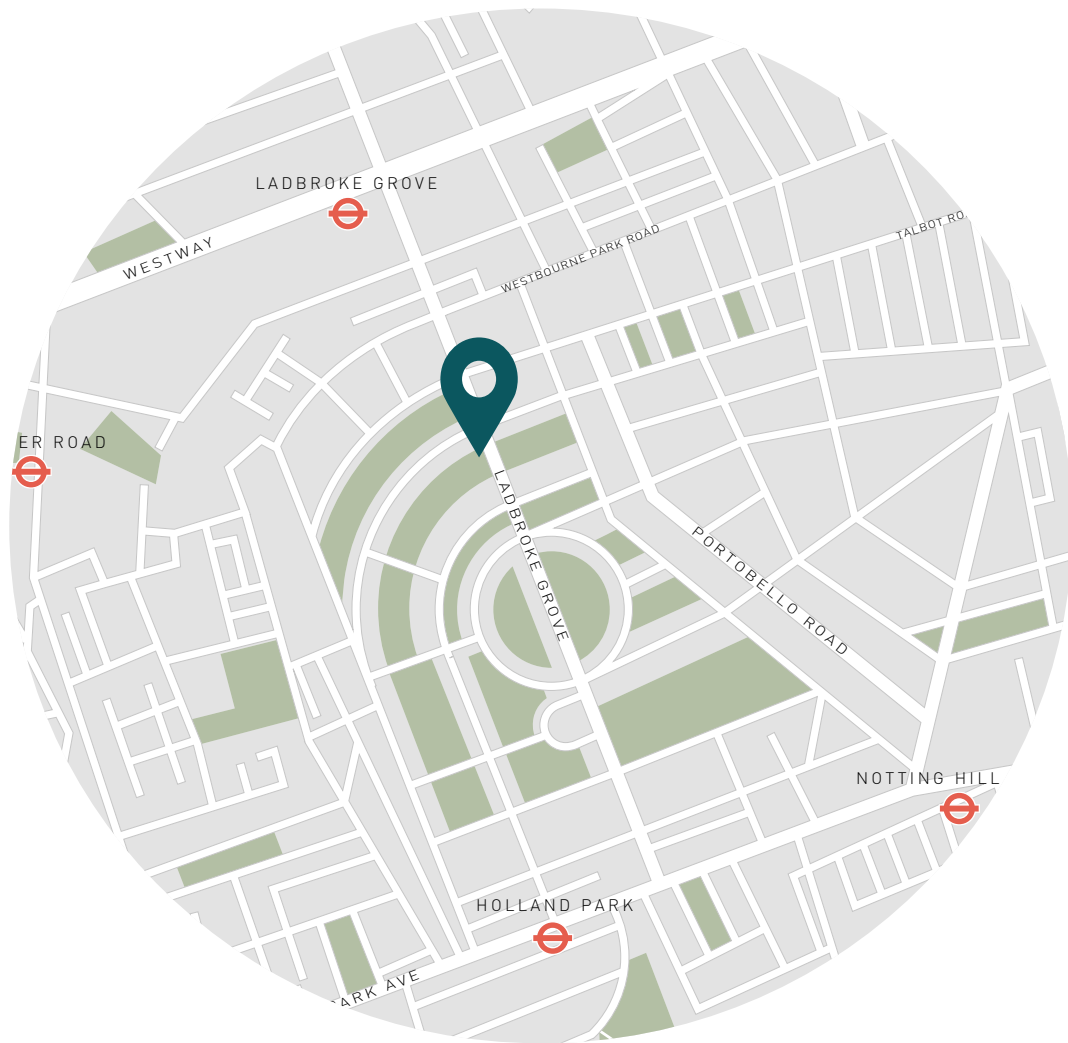
Approx. Gross Internal Floor Area 743 Sq. Ft. / 69.00 Sq. M. (Excluding Communal Entrance Hall)

Approx. Gross Internal Floor Area 909 Sq. Ft. / 84.44 Sq. M. (Including Communal Entrance Hall)

Floor plans are for illustrative purposes only and not to scale.
Compliant with RICS code of measuring practice.

Property Details

- Open-plan reception room
- Two bedrooms
- One bathroom
- High ceilings
- Ample storage
- Royal Borough of Kensington & Chelsea
- Council tax band E £1689.00
- Approx. 909 sq ft / 84.4 sq m. EPC=C



Location

Situated between Elgin Crescent and Lansdowne Road, this two-bedroom apartment is close to vibrant Portobello Road and classy Westbourne Grove. Spend mornings sifting through vintage finds at Portobello Market before pausing for a pick-me-up at Daylesford. There are plenty of options for social brunches too with Granger and Co, 202 and Gold within easy reach. At the end of Ladbroke Grove is Holland Park Avenue which will lead you to the namesake park.

Nearest Tubes:

- Ladbroke Grove (6 mins)
- Holland Park (10 mins)
- Notting Hill Gate (13 mins)

Specialising in London
and Ibiza's design-led homes.

Let's talk

020 7727 1717

lettings@domusnova.com

domusnova.com