

# DOMUS NOVA

## Ladbroke Grove

Notting Hill W11

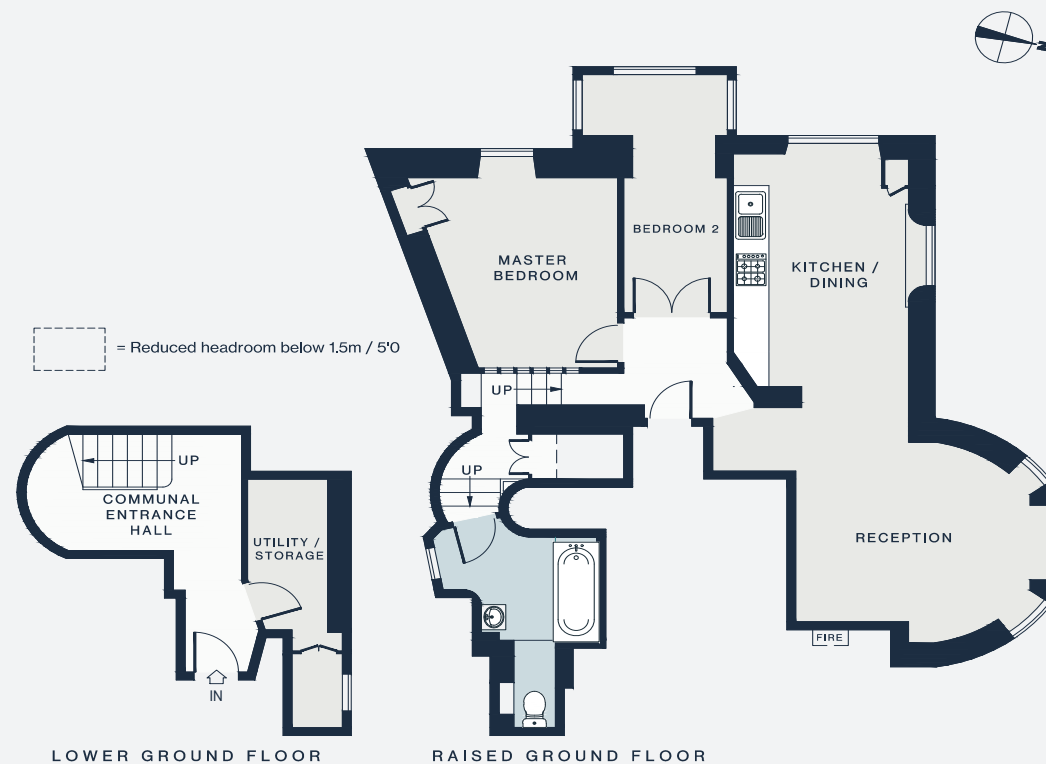
APPROXIMATE GROSS INTERNAL AREA

909 sq ft / 84.4 sq m

020 7727 1717

domusnova.com

LONDON | IBIZA



RECEPTION  
14'0 x 12'5 (4.2m x 3.8m)

KITCHEN / DINING  
15'0 x 9'8 (4.5m x 2.9m)

MASTER BEDROOM  
11'10 x 11'8 (3.6m x 3.5m)

BEDROOM 2  
14'9 x 8'0 (4.5m x 2.4m)

Floor plans are for illustrative purposes only and not to scale. Compliant with RICS code of measuring practice. Furniture layouts are indicative only. This property may be furnished, part-furnished or unfurnished. Please refer to your agent for details.