

DOMUS NOVA



Ladbroke Grove W11
£825 p/w (Long Let)



Found in a yellow-brick townhouse on tree-lined Ladbroke Grove, functionality comes to the fore at this recently renovated second-floor apartment.

Inside, high ceilings and large sash windows accentuate the generous proportions of the living space. Along one wall, contrasting matte-black and white kitchen units are finished with light stone countertops to create a streamlined culinary domain. Integrated appliances and a pull-out larder take care of the practicalities.

On the opposite wall, an exposed brick chimney breast introduces textural detail to the otherwise clean-lined backdrop and provides a focal point for a seating area. There's also room to accommodate a dining table under the window.





“ An exposed brick chimney breast introduces textural detail to the otherwise clean-lined backdrop and provides a focal point.





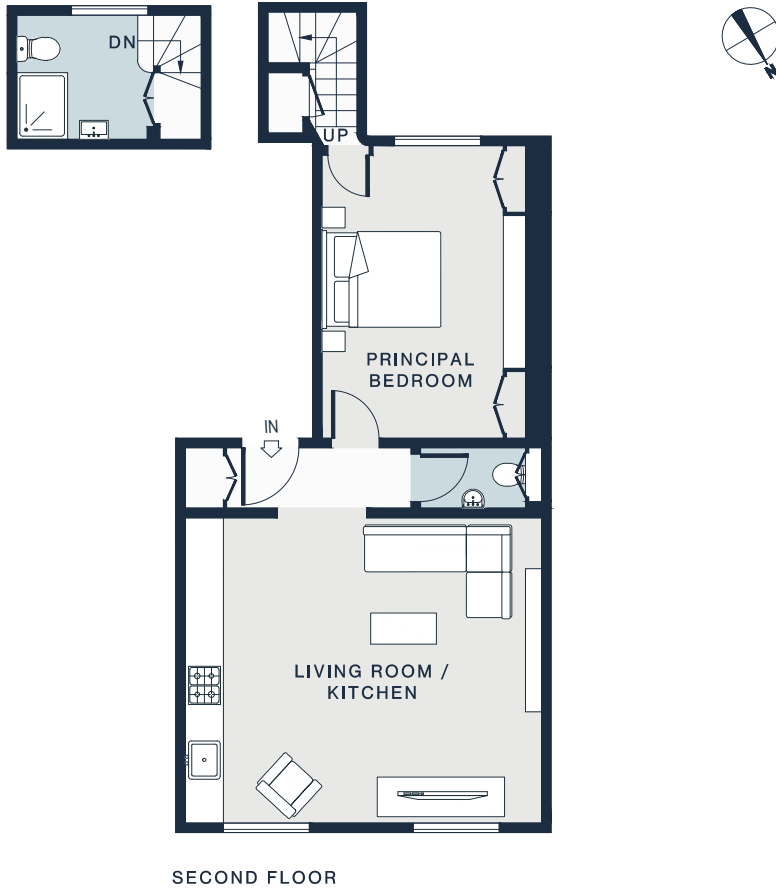
Double doors lead out to the hallway, past a convenient cloakroom, to the bedroom suite. Here, an abundance of fitted storage – some of which stretches to the ceiling – helps to declutter the space, creating a minimalist aesthetic. Grey carpet adds a comforting touch, while treetop views from the window contribute a calming feel. From here, stairs lead to the marble-clad en suite shower room.











LIVING ROOM / KITCHEN
18'5 x 15'8 (5.61m x 4.78m)

PRINCIPAL BEDROOM
15'0 x 10'5 (4.58m x 3.18m)

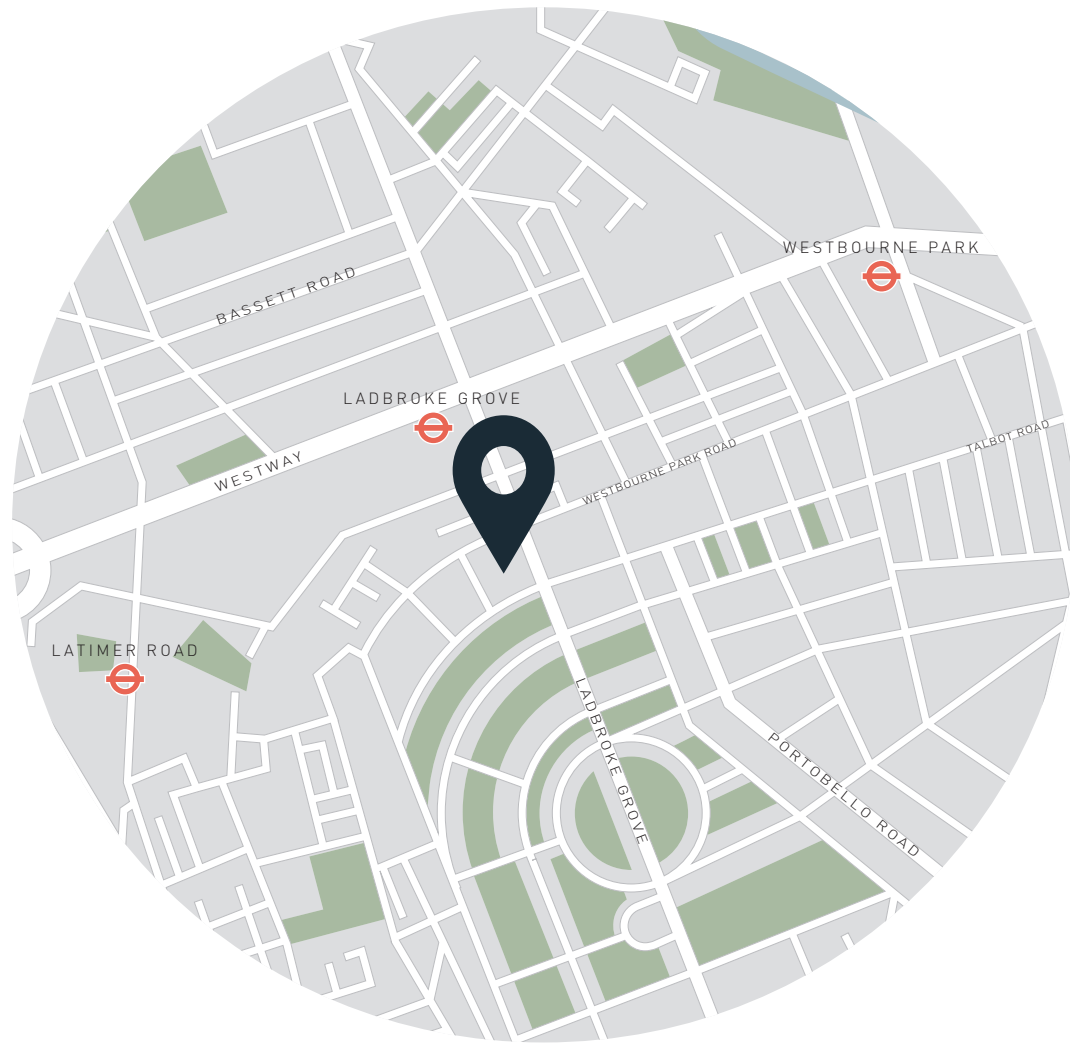
Approx. Gross Internal Area = 573.71 sq ft / 53.30 sq m

Floor plans are for illustrative purposes only and not to scale. Compliant with RICS code of measuring practice.
Furniture layouts are indicative only. This property may be furnished, part-furnished or unfurnished. Please refer to your agent for details.

Property Details

Open-plan reception room and kitchen
Contemporary design
Bedroom with fitted storage and en suite shower room
Separate cloakroom
Royal Borough of Kensington & Chelsea
Approx 574 sq ft / 53.3 sq m

EPC = C
Council Tax Band = C
Deposit = £4,125



Location

Running parallel to Portobello Road, Ladbroke Grove is in walking distance of Notting Hill's many hotspots. Spend weekends antique hunting along Portobello Market, lunching at Ottolenghi or catching a film at The Electric Cinema – all moments away. There's an abundance of dining options too, from tasting menus at two-Michelin-starred The Ledbury to delectable small plates at Gold. On sunny days, head to the lawns of Holland Park; on colder ones, bag a fireside seat at The Pelican.

Ladbroke Grove - 2 mins

Specialising in London
and Ibiza's design-led homes

Let's talk

020 7727 1717

lettings@domusnova.com

domusnova.com

The property particulars are a guide not statements. Descriptions, photographs, and plans are for guidance and should be checked by the prospective tenant. The Property is offered "subject to contract and references". No warranties, representations, or Tenancy is given by Domus Nova. Expenses incurred by a prospective tenant will not be reimbursed if the Landlord withdraws prior to the Tenancy Agreement being signed, dated and exchanged and cleared funds received. Furniture and other items shown in a property at viewing may belong to a current tenant. The prospective tenant should verify in writing which fixtures and fittings forms part of the Tenancy. Our full lettings disclaimer together with trading names and our [Privacy Policy](#) is shown on our website