

DOMUS NOVA

Ladbroke Grove

Notting Hill W11

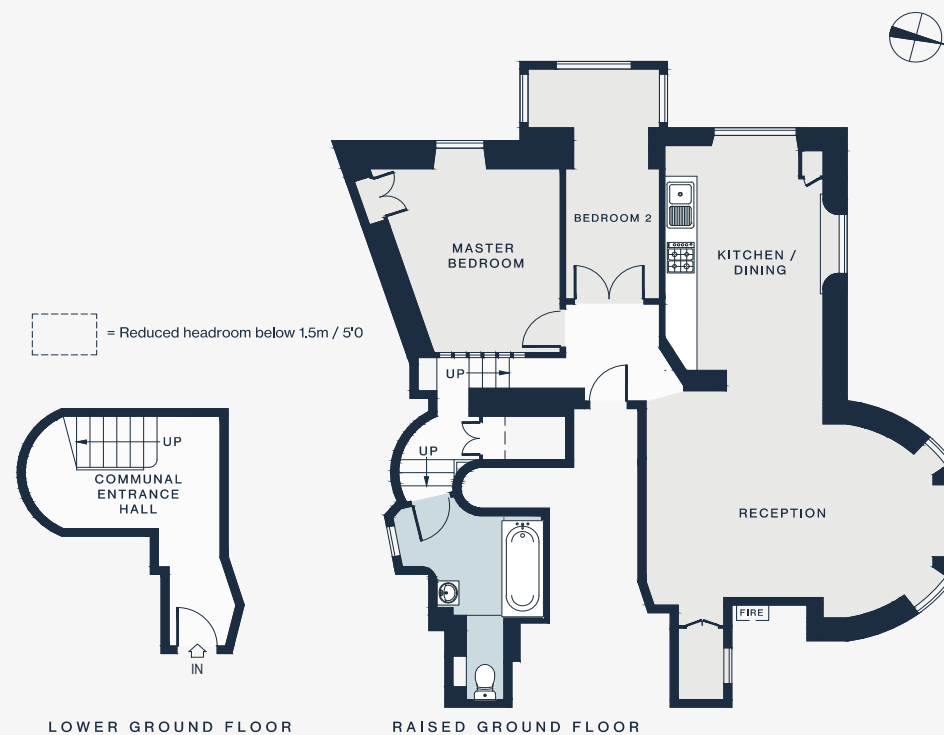
APPROXIMATE GROSS INTERNAL AREA

909 sq ft / 84.4 sq m

020 7727 1717

domusnova.com

LONDON | IBIZA



Floor plans are for illustrative purposes only and not to scale. Compliant with RICS code of measuring practice.