

# DOMUS NOVA

Ladbroke Grove

Notting Hill W11

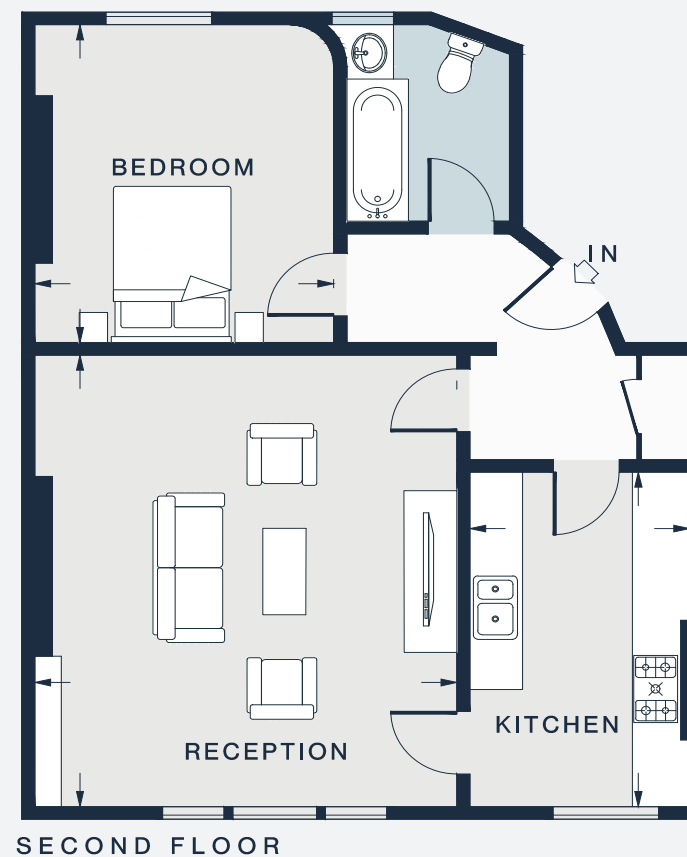
APPROXIMATE GROSS INTERNAL AREA

667 sq ft / 62.9 sq m

020 7727 1717

domusnova.com

LONDON | IBIZA



RECEPTION  
17'10 x 15'10 (5.4m x 4.8m)

BEDROOM  
12'5 x 11'1 (3.8m x 3.4m)

KITCHEN  
13'3 x 8'4 (4.0m x 2.5m)

Approx. Gross Internal Area = 677 sq ft / 62.9 sq m

Floor plans are for illustrative purposes only and not to scale. Compliant with RICS code of measuring practice. Furniture layouts are indicative only. This property may be furnished, part-furnished or unfurnished. Please refer to your agent for details.